

RYDEEN FARMS 24TH ANNUAL PRODUCTION SALE

PERFORMANCE + PEACE OF MIND =

GENETICS WITH VISION

SATURDAY, FEBRUARY 12, 2022 | CLEARBROOK, MN | 2:00 PM CST

64 BLACK & RED YEARLING BULLS | 14 AGED BULLS [18 MONTHS+] | 29 BRED & 13 OPEN FEMALES



Rydeen Farms
SINCE 1897

Polled Red & Black Simmental Cattle



Rydeen Farms

SINCE 1897

Polled Red & Black Simmental Cattle

Dear Cattle Men and Women:

Welcome to our 24th Annual Genetics With Vision Bull and Female sale and our 43rd year of selling breeding livestock! Thank you for your interest!

While 2021 had its own set of challenges with very dry conditions we have lots of early snow to replenish the moisture and look to the future with hope and optimism.

We continue to be extremely pleased with our LCDR Impact 134F calves. We are offering the first bred females out of this sire. They are really the nicest group of bred heifers we have ever had. Deep bodied, attractive and docile, they are just plain good. The bull calves continue to impress us with their natural thickness and growth even in less than optimal conditions like we had this summer. On the red side, our new herd sire WS Gadget has done a great job for us. The calves are dark red with lots of growth and a good disposition.

Our goal continues to be "Performance and Peace of Mind". We continue to stay disciplined in our breeding decisions to apply science and technology to the art of livestock production. We utilize genomic enhanced EPD's and parent verify almost 100% of the sale offering. After decades of ultrasounding our yearling bulls, we made the decision to eliminate that this year. With generations of ultrasound testing stacked into each pedigree and the accuracy of DNA now available, we do not see the necessity of validating that EPD any longer. We have added Top Genomics DNA evaluation for a deeper dive into the genomics of the bulls and also the bred heifers. While the G+, ATM and ACE information is geared toward bull selection, we wanted to evaluate our bred heifers. The bred heifer lots with a G+ logo genetically have higher maternal qualities, those bred heifers with an ATM logo have the genetics to raise heavier calves. Please see page four, for an explanation of this new technology. It is a useful tool.

It is important that our customers feel comfortable participating in our production sale. We want to highlight that we have many sale day bidding options. If you are unable to attend in person, absentee bids can be placed with one of our sale contacts or sale staff listed or bid online through DVAuction. Feel free to call or email if you have any questions or concerns. As always visitors are welcome anytime!

Finally, we thank you for your past support and friendship. We know an investment in genetics is an important decision and we do not take it lightly. Please let us know if there is anything we can do to help you in your selection process.

Sincerely,
The Rydeen Family



The Rydeen Family
Chad, Claire, Lois, Paul, and Justis

RYDEEN FARMS 24TH ANNUAL PRODUCTION SALE

PERFORMANCE + PEACE OF MIND = GENETICS WITH VISION

SATURDAY, FEBRUARY 12, 2022 | CLEARBROOK, MN | 2:00 PM CST

64 BLACK & RED YEARLING BULLS | 14 AGED BULLS [18 MONTHS+] | 29 BRED & 13 OPEN FEMALES

Located ½ mile north of Clearbrook on #5; 3 miles east on #4 and ½ mile south on 199th ave.

Terms and Conditions: This sale is conducted under the standard terms and conditions adopted by the American Simmental Association. If you have any questions, please contact us.

Registration Papers: Registration papers will be transferred on all animals. Please inform the clerk of your ASA number.

Feeding Arrangements: If you are unable to take your bull home on sale day, we will feed them for free until April 1, 2022. The bulls we feed will be put in with our bulls and treated the same. Successful buyers are responsible for animals purchased sale day and we are not responsible if an animal is injured after purchase. We encourage you to purchase mortality insurance. We will be semen testing bulls left here as able based on schedules. If you are interested in having your animal tested, please let us know.

Trucking: We will assist buyers in coordinating and making the most economical hauling arrangements.

Herd Health: We have completed 9 years of whole herd Johnes testing and all dams of sale cattle tested negative in 2021.

Spring 2021 born bulls were vaccinated at birth with Vision 8, InForce3, and given MultiMin. They were vaccinated in the spring with Vista Once. Prior to weaning they were given Vista Once, Vision 8 and MultiMin. At weaning they were given UltraBac 8 and Nasalgen. In November they were given Nasalgen, Valbazen and poured with Clean Up 2. They were repoured in January with Ivermectin.

Aged bulls were vaccinated in the spring of 2021 with Vista Once, UltraBac 8, given MultiMin. In the fall of 2021, they were vaccinated with InForce3, UltraBac 8, MultiMin, Valbazen, and poured with Clean Up2. They were repoured in January with Ivermectin. All aged bulls have passed a breeding soundness exam and have a valid semen test.

Bred heifers were vaccinated with UltraBac 8 and ViraShield 6L5, given MultiMin, and LongRange prior to breeding. The bred heifers were ultrasounded on 7/28/2021 and 8/4/2021 and 11/27/2021 for pregnancy. In the fall of 2021 they were vaccinated with UltraBac 8, Nasalgen, ScourBoss 9, Valbazen, and poured with Clean Up 2. Bred females are Bangs vaccinated and have had two doses of ScourBoss.

Open heifers were vaccinated with Vision 8, Inforce 3, and MultiMin. They were vaccinated in the spring with Vista Once. Prior to weaning they were given Vista Once, Vision 8, and MultiMin. At weaning they were given UltraBac 8, Nasalgen and poured with Clean Up 2. They are Bangs vaccinated.

Semen Rights: We will retain 1/3 semen interest on all bulls sold in the sale unless specifically noted.

Livestock Insurance: Lindfors Insurance Agency will be available sale day, 218-435-6585.

Announcements: Announcements made sale day and from the auction block during the sale, take precedence over printed material in the catalog or other printed material associated with the sale. Anyone attending this sale attends at his or her own risk; we are not responsible for accidents, damages or stolen items.

SATURDAY, FEBRUARY 12, 2022

10:00 a.m.

Cattle available for viewing

12:00 p.m.

Complimentary Lunch at Noon
At Rydeen Farms, Clearbrook, Minnesota

2:00 p.m.

Sale Begins

SALE DAY PHONES

Farm. 218-776-3338

Paul cell. 218-280-1916

Lois cell. 218-280-8196

Justis cell. 218-280-2032

View catalog and links to videos
online at, www.rydeenfarms.com

AUCTIONEER

Tracy Harl, Wellington, CO
402-469-3852 cell

SALE REPRESENTATIVES

Corey Wilkins. 256-590-2487
Allied Genetic Resources

Kelly Schmidt. 406-599-2395
Cattle Business Weekly

Andrew Swanson. 507-829-4133
Farm and Ranch Guide

Russ Danielson. 701-261-2742
American Simmental Association

Justin Dikoff. 605-290-0635
DVAuction

Catalog designed by

 **Generation 6**
marketing
www.generation6.co

DVAuction
Broadcasting Real-Time Auctions

SALE BROADCASTED ONLINE
THROUGH DVAUCTION
Bid online at www.dvauction.com





LCDR IMPACT 134F Homozygous Polled | Homozygous Black

The Impact progeny continue to impress us. He sires high performance, sound, attractive sons and broody, exceptional females. We think you will like them as much as we do. As you can see his sons and daughters carry G+ and ATM ratings which validates what we see expressed in his progeny!



Lot 1



Lot 2

1 | RFS HOMESTEAD H304

Rydeen Farms | **Homo Black | Homo Polled | PB SM | 18-Month-Old Bull**
BD: 8/30/20 | Tattoo: H304 | ASA#: 3828938

SIRE **LCDR IMPACT 134F**
WS MISS SUGAR C4
J BAR J NIGHTRIDE 225Z
DAM **D223**
RFS MISS AMAZE A29



Act BW	82
Adj WW	632
Act Wt 1/7/22	1450
Frame Sc	5.8
Act SC	41.0

Genomic Enhanced EPDs

	CE	BW	WW	YW	ADG	MCE	Milk	MWW	Stay	Doc	CW	YG	Marb	BF	REA	API	TI
EPD	12.1	-0.3	86.1	138.9	0.33	7.1	25.8	68.7	15.2	12.3	56.8	-0.36	0.35	-0.072	1.17	151.6	92.2
%	35	20	20	10	10	25	35	25		40	1		10		10	15	10

- Homo black, homo polled
- Dam is a 6 year old Nightride 3/4 blood
- Excellent carcass traits

2 | RFS HARDWIRE H302

Rydeen Farms | **Homo Black | Homo Polled | PB SM | 18-Month-Old Bull**
BD: 8/30/20 | Tattoo: H302 | ASA#: 3828936

SIRE **LCDR IMPACT 134F**
WS MISS SUGAR C4
SVF ALLEGIANCE Y2
DAM **E40**
RFS MISS Z72



Act BW	86
Adj WW	726
Act Wt 1/7/22	1680
Frame Sc	6.0
Act SC	39.0

Genomic Enhanced EPDs

	CE	BW	WW	YW	ADG	MCE	Milk	MWW	Stay	Doc	CW	YG	Marb	BF	REA	API	TI
EPD	8.1	3.5	108.4	172.4	0.40	3.1	29.5	83.7	10.2	14.0	64.8	-0.38	0.09	-0.080	1.26	123.9	94.3
%			1	1	1		15	1		20	1				3		5

- Homo black, homo polled
- Beautiful phenotype
- Out of a nice Allegiance dam

3

RFS HAMMER H319

Rydeen Farms

Homo Black | Homo Polled | PB SM | 18-Month-Old Bull
BD: 9/7/20 | Tattoo: H319 | ASA#: 38283

SIRE **LCDR IMPACT 134F**
WS MISS SUGAR C4
TNT DUAL FOCUS T249

DAM **D91**
BRANT AMELIA A52



Act BW	88
Adj WW	659
Act Wt 1/7/22	1600
Frame Sc	5.5
Act SC	46.5

Genomic Enhanced EPDs

EPD	CE	BW	WW	YW	ADG	MCE	Milk	MWW	Stay	Doc	CW	YG	Marb	BF	REA	API	TI
	8.3	3.8	0.1	159.3	0.38	4.4	24.0	73.5	13.8	16.1	48.0	-0.35	0.31	-0.092	0.88	139.4	93.4
%			2	1	1		50	10		10	4		15	35	50	30	5

- Homo black, homo polled
- Ratios BW 101, WW 100
- Dam is a Dual Focus out of a strong cow family



Lot 3

18-MONTH-OLD BULLS

4

RFS HARBOR H331

Rydeen Farms

Homo Black | Homo Polled | PB SM | 18-Month-Old Bull
BD: 9/10/20 | Tattoo: H331 | ASA#: 3828966

SIRE **LCDR IMPACT 134F**
WS MISS SUGAR C4
ELLINGSON LOAD UP B4022

DAM **D268**
RFS MISS Z161



Act BW	86
Adj WW	654
Act Wt 1/7/22	1525
Frame Sc	6.0
Act SC	45.0

Genomic Enhanced EPDs

EPD	CE	BW	WW	YW	ADG	MCE	Milk	MWW	Stay	Doc	CW	YG	Marb	BF	REA	API	TI
	9.2	5.0	96.5	156.3	0.37	5.2	26.2	74.4	14.3	15.4	47.0	-0.40	-0.06	-0.081	1.11	118.5	81.8
%			4	2	2		30	10		10	5				10		35

- Beautiful phenotype
- Excellent growth traits



Lot 4

5

RFS HARDCORE H338

Rydeen Farms

Homo Black | Homo Polled | PB SM | 18-Month-Old Bull
BD: 9/12/20 | Tattoo: H338 | ASA#: 3828972

SIRE **LCDR IMPACT 134F**
WS MISS SUGAR C4
KBHR Y068 HARLEY

DAM **RFS MISS A217**
W35



Act BW	82
Adj WW	606
Act Wt 1/7/22	1445
Frame Sc	5.8
Act SC	40.0

Genomic Enhanced EPDs

EPD	CE	BW	WW	YW	ADG	MCE	Milk	MWW	Stay	Doc	CW	YG	Marb	BF	REA	API	TI
	6.9	4.2	89.2	137.3	0.30	3.0	27.9	72.4	13.7	16.3	0.9	-0.50	0.20	-0.104	1.34	126.2	84.5
%			15	15	15		20	15		5	1	15	30	20	1		25

- Homo black, homo polled
- Dam is 9 years old and always does a good job
- Solid cow family



Lot 5

6

RFS HERDSMAN H336

Rydeen Farms

Homo Black | Homo Polled | PB SM | 18-Month-Old Bull
BD: 9/12/20 | Tattoo: H336 | ASA#: 38289

SIRE **LCDR IMPACT 134F**
WS MISS SUGAR C4
KBHR Y068 HARLEY

DAM **RFS MISS BEA B243**
W135



Act BW	84
Adj WW	719
Act Wt 1/7/22	1415
Frame Sc	5.5
Act SC	41.0

Genomic Enhanced EPDs

EPD	CE	BW	WW	YW	ADG	MCE	Milk	MWW	Stay	Doc	CW	YG	Marb	BF	REA	API	TI
	11.0	0.6	86.4	135.9	0.31	4.8	31.1	74.2	15.8	15.1	56.2	-0.35	0.10	-0.063	1.21	135.0	
%		50	30	20	15	15		10	10		10	1			4	40	25

- Homo black, homo polled
- Power pedigree



Lot 6



7 | RFS HALFBACK H317

Rydeen Farms | Hetero Black | Homo Polled | PB SM | 18-Month-Old Bull
BD: 9/7/20 | Tattoo: H317 | ASA#: 38281

CDI MAINLINE 2D
SIRE LCDR **IMPACT 134F** Act BW 87
 WS MISS SUGAR C4 Adj WW 715
 SVF ALLEGIANCE Y2 Act Wt 1545
DAM **E263** Frame Sc 5.8
 RFS MISS BLAIR B233 Act SC 40.0

Genomic Enhanced EPDs

CE	BW	WW	YW	ADG	MCE	Milk	MWW	Stay	Doc	CW	YG	Marb	BF	REA	API	TI
8.9	3.3	109.3	172.6	0.40	4.3	27.5	82.1	11.9	16.9	54.9	-0.24	0.06	-0.054	0.91	126.5	93.6
%		1	1	1		25	1		3	2				45		5

- Top 1% weaning, yearling EPDs
- Baldy Impact son

8 | RFS HAWTHORNE H333

Rydeen Farms | Homo Black | Homo Polled | PB SM | 18-Month-Old Bull
BD: 9/10/20 | Tattoo: H333 | ASA#: 3828967

CDI MAINLINE 2D
SIRE LCDR **IMPACT 134F** Act BW 83
 WS MISS SUGAR C4 Adj WW 677
 HTP SVF IN DEW TIME Act Wt 1390
DAM **D252** Frame Sc 5.5
 RF RABBIT Act SC 44.5

Genomic Enhanced EPDs

CE	BW	WW	YW	ADG	MCE	Milk	MWW	Stay	Doc	CW	YG	Marb	BF	REA	API	TI
7.3	5.4	103.4	158.9	0.35	2.5	25.2	76.9	13.3	13.8	52.4	-0.32	0.24	-0.071	1.00	130.4	91.5
%		1	2	3		40	4		20	2		25		25	50	10

- Homo black, homo polled
- Excellent performance traits



9 | RFS HEADMAN H334

Rydeen Farms | Homo Black | Homo Polled | PB SM | 18-Month-Old Bull
BD: 9/10/20 | Tattoo: H334 | ASA#: 3828968

CDI MAINLINE 2D
SIRE LCDR **IMPACT 134F** Act BW 86
 WS MISS SUGAR C4 Adj WW 727
 TNT TANKER U263 Act Wt 1605
DAM **RFS MISS AGATE A50** Frame Sc 5.5
 RF SEASON S141 Act SC 39.0

Genomic Enhanced EPDs

CE	BW	WW	YW	ADG	MCE	Milk	MWW	Stay	Doc	CW	YG	Marb	BF	REA	API	TI
5.1	5.5	107.2	168.0	0.38	3.7	26.4	79.9	17.3	12.2	64.8	-0.44	-0.10	-0.098	1.32	119.6	0.6
%		1	1	1		30	2	45	40	1	40			35	2	20

- Top weaning weight in his contemporary group
- Out of a great 9 year old Tanker cow

10 | RFS HEINEKEN H318

Rydeen Farms | Homo Black | Homo Polled | PB SM | 18-Month-Old Bull
BD: 9/7/20 | Tattoo: H318 | ASA#: 3828952

CCR COWBOY CUT 5048Z
SIRE WS **PROCLAMATION E202** Act BW 90
 WS MISS SUGAR C4 Adj WW 660
 WS ALL-AROUND Z35 Act Wt 1485
DAM **F252** Frame Sc 5.5
 D226 Act SC 41.0

Genomic Enhanced EPDs

CE	BW	WW	YW	ADG	MCE	Milk	MWW	Stay	Doc	CW	YG	Marb	BF	REA	API	TI
11.9	0.9	98.0	150.6	0.33	8.1	29.4	78.4	22.6	18.0	44.5	-0.18	0.27	-0.040	0.72	161.9	95.3
%	35	35	3	3	10	15	15	3	2	2	10	20			5	4

- Calving ease, spread bull
- Top 5% API, top 4% TI
- Ratios BW 110, WW 100

Confidently choose the logoed group that matches your needs, then just pick the bulls you like:



ACCREDITED GENOMIC PLUS - For the majority of producers who simply need consistent and balanced genetic improvement, without genomic setbacks, G+ Accredited bulls should be on your list for premium purchase. These sires will absolutely move you forward for both cost reduction and income producing traits and substantially reduce risk when compared to all other evaluation programs. It's simple, the right genes are in these bulls to help secure a profitable future and they have great EPDs to match!



ACCREDITED TERMINAL MATE - Just like an ATM machine makes it simpler to access your cash, the ATM Logo highlights bulls accredited to generate extra cash income as soon as your next calf crop! These bulls are meant specifically to use only on mature cows and for the purpose of adding performance, pay weight and end product value to market.



ACCREDITED CALVING EASE - Simply find bulls with the ACE logo for third party Accredited, secure Calving Ease bulls. Though we have had tools in the past to assist in choosing heifer bulls, we've never had one nearly this effective. The reduced risk that comes with this genomic certification will simply make your decisions easier and your heifer calving season more successful. Purchase special purpose ACE bulls with confidence. They will deliver consistent and predictable calving ease.



KBHR Kingsman E144

Homozygous Polled | Red

KBHR Kingsman E144 is a very complete bull we purchased from Keller's Broken Heart Ranch in 2018. While our red side is light on numbers this year, we are pleased with the quality we have to offer.

11

RFS HILFIGER H325

Rydeen Farms

Red | Homo Polled | PB SM | 18-Month-Old Bull
BD: 9/9/20 | Tattoo: H325 | ASA#: 38289

WS ALL ABOARD B
SIRE **KBHR KINGSMAN E144**
KBHR Z041
DAM **D249**
B98
RFS BULLETPROOF B42



Act BW	83
Adj WW	694
Act Wt 1/7/22	1500
Frame Sc	5.8
Act SC	43.5

Genomic Enhanced EPDs

CE	BW	WW	YW	ADG	MCE	Milk	MWW	Stay	Doc	CW	YG	Marb	BF	REA	API	TI
11.8	1.5	0.7	134.8	0.28	6.4	24.8	0.1	16.8	14.9	47.6	-0.39	0.22	-0.087	1.04	143.9	88.9
%	40	50	10	15	25	40	40	20	50	15	5	30		20	25	15

- Double digit calving ease
- Out of a beautiful RFS Bulletproof dam
- Balanced EPD profile



12

RFS HEARTLAND H328

Rydeen Farms

Red | Hetero Polled | PB SM | 18-Month-Old Bull
BD: 9/10/20 | Tattoo: H328 | ASA#: 3828963

WS ALL ABOARD B
SIRE **KBHR KINGSMAN E144**
KBHR Z041
TNT AXIS X307
DAM **RFS MISS BECKY B223**
RF MISS RAM P281



Act BW	85
Adj WW	707
Act Wt 1/7/22	1560
Frame Sc	6.0
Act SC	44.0

Genomic Enhanced EPDs

CE	BW	WW	YW	ADG	MCE	Milk	MWW	Stay	Doc	CW	YG	Marb	BF	REA	API	TI
11.4	3.3	0.1	123.9	0.21	6.0	20.6	0.6	17.1	13.9	30.6	-0.45	-0.06	-0.082	1.03	123.3	78.4
%	45		15	35		45		35	45	20	45	35		20		50

- Calving ease and performance sire
- Balanced EPD profile



13

RFS HANSEL H339

Rydeen Farms

Red | Homo Polled | PB SM | 18-Month-Old Bull
BD: 9/14/20 | Tattoo: H339 | ASA#: 3828973

WS ALL ABOARD B
SIRE **KBHR KINGSMAN E144**
KBHR Z041
TJ POWER GRID 363Y
DAM **CDI MS CAYLA 17C**
HOOK'S UNION 68U



Act BW	87
Adj WW	647
Act Wt 1/7/22	1465
Frame Sc	5.8
Act SC	42.0

Genomic Enhanced EPDs

CE	BW	WW	YW	ADG	MCE	Milk	MWW	Stay	Doc	CW	YG	Marb	BF	REA	API	TI
11.3	3.6	86.6	118.5	0.20	6.5	22.7	0.9	19.1	14.4	26.0	-0.35	0.13	0.000	0.88	134.5	0.2
%	45		20	45		35		35	20	15		45		50	40	40

- Powerful Kingsman son
- Out of female we purchased from C Diamond Simmentals

14

RFS HARWOOD H326

Rydeen Farms

Red | Hetero Polled | PB SM | 18-Month-Old Bull
BD: 9/9/20 | Tattoo: H326 | ASA#: 3828961

WS OUTCROSS C164
SIRE **BRIDLE BIT BEST MAN F839**
BRIDLE BIT MISS A382
RFS BULLETPROOF B42
DAM **F247**
RFS MISS BAILEY B220



Act BW	84
Adj WW	628
Act Wt 1/7/22	1265
Frame Sc	5.5
Act SC	44.0

Genomic Enhanced EPDs

CE	BW	WW	YW	ADG	MCE	Milk	MWW	Stay	Doc	CW	YG	Marb	BF	REA	API	TI
8.4	-0.8	0.3	96.4	0.19	5.2	20.8	53.4	21.5	12.9	22.3	-0.39	0.05	-0.080	0.76	133.3	0.9
%		15						4	30						45	

- Out of a great RFS Bulletproof dam



WS Electra E88 - Dam of Lots 15-17



RFS Miss Z73 - Dam of Lots 18-21

These two donor dams are featured matings with Impact. WS Electra E88 is the dam to lots 15-17. These flushmates are powerful sons with an excellent EPD profile and carry the red gene. The RFS Z73 sons are lots 18-21. They are physically attractive and out of our favorite Tanker cow.

YEARLING BULLS



Lot 15

15

J163

Rydeen Farms | Hetero Black | Homo Polled | PB SM | Yearling Bull
BD: 3/28/21 | Tattoo: J163 | ASA#: 3933330

SIRE **LCDR IMPACT 134F**
CDI MAINLINE 265D
WS MISS SUGAR C4
DAM **WS ELECTRA E88**
CDI VERDICT 220Y
HSF MISS SKY 87U

Act BW	88
Adj WW	812
Adj YW	1325
Frame Sc	5.8
ADG	3.22
WDA	3.74
Adj SC	40.3



Genomic Enhanced EPDs

CE	BW	WW	YW	ADG	MCE	Milk	MWW	Stay	Doc	CW	YG	Marb	BF	REA	API	TI
9.8	0.5	99.2	160.1	0.38	6.0	33.1	82.7	18.6	12.5	52.7	-0.40	0.35	-0.079	1.20	159.6	99.8
%	30	2	1	1	45	4	1	25	35	2		10		5	10	2

- Highest weaning weight of flushmates
- Receives both G+ and ATM rating



Lot 16

16

J136

Rydeen Farms | Hetero Black | Homo Polled | PB SM | Yearling Bull
BD: 3/20/21 | Tattoo: J136 | ASA#: 3933303

SIRE **LCDR IMPACT 134F**
CDI MAINLINE 265D
WS MISS SUGAR C4
DAM **WS ELECTRA E88**
CDI VERDICT 220Y
HSF MISS SKY 87U

Act BW	89
Adj WW	671
Adj YW	1210
Frame Sc	5.8
ADG	3.39
WDA	3.42
Adj SC	40.9



Genomic Enhanced EPDs

CE	BW	WW	YW	ADG	MCE	Milk	MWW	Stay	Doc	CW	YG	Marb	BF	REA	API	TI
13.5	-1.0	99.0	159.7	0.38	8.2	33.1	82.6	16.4	15.3	51.9	-0.28	0.33	-0.061	0.96	160.9	101.0
%	20	10	2	1	15	4	1		10	2		15		35	10	1

- Hetero black ET calf out of our WS Electra E88 donor
- Excellent carcass traits, economic indices
- One of our favorite calves



Lot 17

17

J129

Rydeen Farms | Hetero Black | Homo Polled | PB SM | Yearling Bull
BD: 3/19/21 | Tattoo: J129 | ASA#: 3933296

SIRE **LCDR IMPACT 134F**
CDI MAINLINE 265D
WS MISS SUGAR C4
DAM **WS ELECTRA E88**
CDI VERDICT 220Y
HSF MISS SKY 87U

Act BW	88
Adj WW	734
Adj YW	1355
Frame Sc	5.8
ADG	3.90
WDA	3.81
Adj SC	38.8



Genomic Enhanced EPDs

CE	BW	WW	YW	ADG	MCE	Milk	MWW	Stay	Doc	CW	YG	Marb	BF	REA	API	TI	
11.2	2.2	116.5	185.9	0.43	6.6	33.1	91.3	14.8	15.7	63.7	-0.26	0.42	-0.060	1.04	160.5	109.4	
%	45		1	1	1	35	4	1		10	1		10		20	10	1

- Double digit calving ease
- Top 10% marbling
- Top 1% TI

18

J62

Rydeen Farms

Homo Black | Homo Polled | PB SM | Yearling Bull
BD: 3/1/21 | Tattoo: J62 | ASA#: 3933228

SIRE CDI MAINLINE 265D
LCDR IMPACT 134F
WS MISS SUGAR C4
TNT TANKER U263
DAM **RFS MISS Z73**
RF MISS J69

Act BW	94
Adj WW	789
Adj YW	1310
Frame Sc	5.8
ADG	3.27
WDA	3.67
Adj SC	40.8



Genomic Enhanced EPDs

CE	BW	WW	YW	ADG	MCE	Milk	MWW	Stay	Doc	CW	YG	Marb	BF	REA	API	TI
8.7	4.9	118.0	187.7	0.44	5.6	28.0	87.0	10.9	17.4	69.7	-0.46	-0.09	-0.108	1.35	118.2	94.3
%		1	1	1		20	1		2	1	30		20	1		5

- Homo black, homo polled flushmates
- Flat top, deep quarter best describes these boys
- Beautiful phenotype



Lot 18

19

J15

Rydeen Farms

Homo Black | Homo Polled | PB SM | Yearling Bull
BD: 2/22/21 | Tattoo: J15 | ASA#: 3933182

SIRE CDI MAINLINE 265D
LCDR IMPACT 134F
WS MISS SUGAR C4
TNT TANKER U263
DAM **RFS MISS Z73**
RF MISS J69

Act BW	93
Adj WW	763
Adj YW	1380
Frame Sc	6.0
ADG	3.87
WDA	3.83
Adj SC	42.4



Genomic Enhanced EPDs

CE	BW	WW	YW	ADG	MCE	Milk	MWW	Stay	Doc	CW	YG	Marb	BF	REA	API	TI
7.8	4.4	110.2	176.2	0.41	5.3	28.0	83.1	13.5	16.0	70.6	-0.47	-0.15	-0.111	1.39	116.9	88.8
%		1	1	1		20	1		10	1	25		10	1		15

- Homo black, homo polled ET calf
- Stunning phenotype



Lot 19

20

J21

Rydeen Farms

Homo Black | Homo Polled | PB SM | Yearling Bull
BD: 2/23/21 | Tattoo: J21 | ASA#: 3933187

SIRE CDI MAINLINE 265D
LCDR IMPACT 134F
WS MISS SUGAR C4
TNT TANKER U263
DAM **RFS MISS Z73**
RF MISS J69

Act BW	90
Adj WW	626
Adj YW	1175
Frame Sc	5.8
ADG	3.44
WDA	3.26
Adj SC	39.5



Genomic Enhanced EPDs

CE	BW	WW	YW	ADG	MCE	Milk	MWW	Stay	Doc	CW	YG	Marb	BF	REA	API	TI
7.6	4.7	101.8	160.4	0.37	5.3	28.0	78.8	15.1	15.9	59.9	-0.47	-0.03	-0.109	1.28	122.3	86.1
%		1	1	2		20	3		10	1	25		20	2		20

- Homo black, homo polled ET calf
- Phenotype very similar to sire



Lot 20

21

J176

Rydeen Farms

Homo Black | Homo Polled | PB SM | Yearling Bull
BD: 4/3/21 | Tattoo: J176 | ASA#: 3933344

SIRE CDI MAINLINE 265D
LCDR IMPACT 134F
WS MISS SUGAR C4
TNT TANKER U263
DAM **RFS MISS Z73**
RF MISS J69

Act BW	89
Adj WW	748
Adj YW	1171
Frame Sc	5.8
ADG	2.65
WDA	3.32
Adj SC	39.6



Genomic Enhanced EPDs

CE	BW	WW	YW	ADG	MCE	Milk	MWW	Stay	Doc	CW	YG	Marb	BF	REA	API	TI
9.6	4.0	98.7	151.8	0.33	6.3	28.0	77.3	13.6	16.5	58.7	-0.43	0.14	-0.103	1.18	129.9	89.2
%		3	3	10		40	20	4	4	1	50	45	20	10	50	15

- Homo black, homo polled



View the sale catalog, videos on all lots and register to bid online at

www.dvauction.com



LRS Ms 3C Pasque 8037F

Homozygous Polled | Homozygous Black

This high selling female is from Lassle Simmentals, Glendive, Montana. She is a bit of an outcross for us and still provides us with good genetic progress with excellent marbling with performance. This is difficult to find. She is the dam of lots 22 and 23.



Lot 22



Lot 23



Lot 24

22

J29

Rydeen Farms

Homo Black | Homo Polled | PB SM | Yearling Bull
BD: 2/25/21 | Tattoo: J29 | ASA#: 3933195

SIRE **LCDR IMPACT 134F**
WS MISS SUGAR C4
3C PASQUE 4331B B
DAM **LRS MS 3C PASQUE 8037F**
LRS MS DUAL FOCUS 213Z

Act BW	89
Adj WW	634
Adj YW	1223
Frame Sc	5.8
ADG	3.70
WDA	3.39
Adj SC	43.6



Genomic Enhanced EPDs

	CE	BW	WW	YW	ADG	MCE	Milk	MWW	Stay	Doc	CW	YG	Marb	BF	REA	API	TI
EPD	9.2	1.3	88.8	148.0	0.37	5.5	27.4	71.7	15.9	10.7	56.5	-0.14	0.46	-0.028	0.82	153.1	93.6
%		45	15	4	2		25	15			1		5			15	5

- Homo black, homo polled ET calf
- Outcross pedigree

23

J37

Rydeen Farms

Homo Black | Homo Polled | PB SM | Yearling Bull
BD: 2/26/21 | Tattoo: J37 | ASA#: 3933203

SIRE **LCDR IMPACT 134F**
WS MISS SUGAR C4
3C PASQUE 4331B B
DAM **LRS MS 3C PASQUE 8037F**
LRS MS DUAL FOCUS 213Z

Act BW	92
Adj WW	569
Adj YW	1129
Frame Sc	5.8
ADG	3.52
WDA	3.13
Adj SC	40.7



Genomic Enhanced EPDs

	CE	BW	WW	YW	ADG	MCE	Milk	MWW	Stay	Doc	CW	YG	Marb	BF	REA	API	TI
EPD	8.5	2.8	95.2	158.8	0.40	4.9	27.4	74.9	14.1	11.2	56.1	-0.29	0.41	-0.065	1.01	147.0	95.3
%			5	2	1		25	10			1		10		25	20	4

- Homo black, homo polled ET calf
- Outcross pedigree

24

J112

Rydeen Farms

Homo Black | Homo Polled | PB SM | Yearling Bull
BD: 3/15/21 | Tattoo: J112 | ASA#: 3933279

SIRE **LCDR IMPACT 134F**
WS MISS SUGAR C4
TNT DUAL FOCUS T249
DAM **D151**
RF PEPPY

Act BW	90
Adj WW	736
Adj YW	1304
Frame Sc	5.3
ADG	3.57
WDA	3.70
Adj SC	43.6



Genomic Enhanced EPDs

	CE	BW	WW	YW	ADG	MCE	Milk	MWW	Stay	Doc	CW	YG	Marb	BF	REA	API	TI
EPD	7.2	2.4	92.9	149.6	0.35	3.5	25.5	71.9	16.3	11.4	55.5	-0.32	0.49	-0.086	0.90	152.5	95.5
%			10	4	3		35	15			2		4		45	15	4

- Homo black, homo polled
- Top 4% marbling
- Excellent carcass traits

25

J39

Rydeen Farms

Homo Black | Homo Polled | PB SM | Yearling Bull
BD: 2/26/21 | Tattoo: J39 | ASA#: 3933205

SIRE **LCDR IMPACT 134F**
WS MISS SUGAR C4
DIKEMANS DOUBLE DOWN 26W
DAM **RFS MISS ALLEGIANCE A17**
U33



Act BW	90
Adj WW	772
Adj YW	1277
Frame Sc	6.1
ADG	3.16
WDA	3.58
Adj SC	41.7

Genomic Enhanced EPDs

EPD	CE	BW	WW	YW	ADG	MCE	Milk	MWW	Stay	Doc	CW	YG	Marb	BF	REA	API	TI
	10.6	3.7	94.7	154.8	0.38	5.6	28.0	75.3	18.5	14.1	44.6	-0.44	0.13	-0.084	1.16	141.2	87.7
%			5	2	1		20	10	30	20	10	40	45		10	30	15

- Homo black, homo polled
- Out of a 9 year old Allegiance dam
- Ratios 105 WW, 102 YW



Lot 25

26

J59

Rydeen Farms

Homo Black | Homo Polled | PB SM | Yearling Bull
BD: 3/1/21 | Tattoo: J59 | ASA#: 3933225

SIRE **LCDR IMPACT 134F**
WS MISS SUGAR C4
SVF ALLEGIANCE Y802
DAM **C67**
RF SOLITA S35



Act BW	90
Adj WW	795
Adj YW	1314
Frame Sc	5.8
ADG	3.26
WDA	3.72
Adj SC	39.8

Genomic Enhanced EPDs

EPD	CE	BW	WW	YW	ADG	MCE	Milk	MWW	Stay	Doc	CW	YG	Marb	BF	REA	API	TI
	9.9	4.6	114.6	177.9	0.40	5.9	30.2	87.5	14.5	15.6	62.5	-0.34	0.21	-0.077	1.16	141.0	99.7
%			1	1	1	50	10	1		10	1		30		10	30	2

- Ratios 99 BW, 108 WW
- Dam is a 7 year old
- Granddam weaned 13 calves at Rydeen Farms



Lot 26

27

J34

Rydeen Farms

Homo Black | Homo Polled | 3/4 SM 1/4 AN | Yearling Bull
BD: 2/26/21 | Tattoo: J34 | ASA#: 3933200

SIRE **LCDR IMPACT 134F**
WS MISS SUGAR C4
CLRS CONSTITUTION 311 C
DAM **RFS MISS FARRAH F79**
B130



Act BW	88
Adj WW	768
Adj YW	1377
Frame Sc	5.8
ADG	3.84
WDA	3.75
Adj SC	43.6

Genomic Enhanced EPDs

EPD	CE	BW	WW	YW	ADG	MCE	Milk	MWW	Stay	Doc	CW	YG	Marb	BF	REA	API	TI
	10.3	1.9	100.4	170.0	0.44	6.9	27.1	77.3	18.0	17.4	51.2	-0.32	0.20	-0.061	1.06	139.1	90.1
%			1	1	1	50	20	2	20	4	5	25		25	4	35	10

- Homo black, homo polled
- Exceptional 3/4 blood
- Dam is a superb Constitution female owned by Tyler Haman



Lot 27

28

J120

Rydeen Farms

Homo Black | Homo Polled | 3/4 SM 1/4 AN | Yearling Bull
BD: 3/17/21 | Tattoo: J120 | ASA#: 3933287

SIRE **LCDR IMPACT 134F**
WS MISS SUGAR C4
W/C UNITED 956Y
DAM **B33**
BRANT NUTMEG Y546R



Act BW	89
Adj WW	757
Adj YW	1324
Frame Sc	5.8
ADG	3.57
WDA	3.77
Adj SC	39.7

Genomic Enhanced EPDs

EPD	CE	BW	WW	YW	ADG	MCE	Milk	MWW	Stay	Doc	CW	YG	Marb	BF	REA	API	TI
	9.0	3.2	108.5	168.4	0.37	5.5	27.7	81.9	9.7	13.2	73.6	-0.20	0.30	-0.038	1.14	123.8	94.3
%			1	1	3		15	1		35	1				2		5

- Homo black, homo polled 3/4 blood
- Dam's a 9 year old with a 360 day calving interval

29

J123

Rydeen Farms

Homo Black | Homo Polled | PB SM | Yearling Bull
BD: 3/17/21 | Tattoo: J123 | ASA#: 3933290

SIRE **LCDR IMPACT 134F**
WS MISS SUGAR C4
CLRS CONSTITUTION 311 C
DAM **F34**
MISS GD B82



Act BW	91
Adj WW	708
Adj YW	1234
Frame Sc	6.1
ADG	3.32
WDA	3.40
Adj SC	41.7

Genomic Enhanced EPDs

EPD	CE	BW	WW	YW	ADG	MCE	Milk	MWW	Stay	Doc	CW	YG	Marb	BF	REA	API	TI
	8.4	1.7	100.4	164.7	0.40	5.9	24.7	74.9	12.4	14.8	64.8	-0.31	0.22	-0.068	1.16	136.6	94.5
%			2	1	1	50	40	10		15	1		30		10	35	4

- Excellent carcass traits with top 1% YW, ADG
- Dam's a moderate framed cow

YEARLING BULLS



Lot 30

30

J101

Rydeen Farms

Homo Black | Homo Polled | PB SM | Yearling Bull
BD: 3/9/21 | Tattoo: J101 | ASA#: 3933267

CDI MAINLINE 265D
SIRE **LCDR IMPACT 134F**
WS MISS SUGAR C4
TNT TANKER U263
DAM **RFS MISS Z33**
W25

Act BW	92
Adj WW	764
Adj YW	1305
Frame Sc	6.0
ADG	3.39
WDA	3.66
Adj SC	41.3



Genomic Enhanced EPDs

EPD	CE	BW	WW	YW	ADG	MCE	Milk	MWW	Stay	Doc	CW	YG	Marb	BF	REA	API	TI
	7.1	3.3	96.2	147.4	0.32	5.4	30.3	78.3	15.0	15.7	54.9	-0.40	-0.01	-0.083	1.20	120.9	84.2
%			4	5	10		10	3		10	2				5		25

- Homo black, homo polled
- Ratios BW 101, WW 104
- Dam's a 10 year old Tanker



Lot 31

31

J96

Rydeen Farms

Homo Black | Homo Polled | PB SM | Yearling Bull
BD: 3/7/21 | Tattoo: J96 | ASA#: 3933262

CDI MAINLINE 265D
SIRE **LCDR IMPACT 134F**
WS MISS SUGAR C4
HOOKS SHEAR FORCE 38K
DAM **RFS MISS T37**
RF RABBIT

Act BW	94
Adj WW	646
Adj YW	1251
Frame Sc	5.8
ADG	3.79
WDA	3.47
Adj SC	42.1



Genomic Enhanced EPDs

EPD	CE	BW	WW	YW	ADG	MCE	Milk	MWW	Stay	Doc	CW	YG	Marb	BF	REA	API	TI
	8.2	2.1	84.9	130.0	0.28	3.9	30.8	73.2	17.4	16.8	45.6	-0.47	0.18	-0.094	1.21	136.0	84.3
%			25	25	25		10	10	40	4	10	25	35	35	4	35	25

- Dam has had 14 calves with impressive ratios
- Excellent phenotype

32

J148

Rydeen Farms

Homo Black | Homo Polled | 3/4 SM 1/4 AN | Yearling Bull
BD: 3/23/21 | Tattoo: J148 | ASA#: 3933315

CDI MAINLINE 265D
SIRE **LCDR IMPACT 134F**
WS MISS SUGAR C4
CONNEALY IRISH 0204
DAM **C6**
RFS MISS ALLEGIANCE A17

Act BW	94
Adj WW	798
Adj YW	1321
Frame Sc	6.2
ADG	3.29
WDA	3.80
Adj SC	43.0



Genomic Enhanced EPDs

EPD	CE	BW	WW	YW	ADG	MCE	Milk	MWW	Stay	Doc	CW	YG	Marb	BF	REA	API	TI
	9.2	2.7	103.4	167.0	0.40	6.7	27.6	79.3	19.8	14.7	46.7	-0.35	0.45	-0.085	0.91	153.5	96.8
%			1	1	1		15	1	10	20	10	20	25	10	15	15	3

- Homo black, homo polled 3/4 blood
- Seven year old SimAngus dam with ratios of BW 101 (5), & WW 102 (5)



Lot 34

34

J118

Rydeen Farms

Homo Black | Homo Polled | PB SM | Yearling Bull
BD: 3/16/21 | Tattoo: J118 | ASA#: 3933285

CDI MAINLINE 265D
SIRE **LCDR IMPACT 134F**
WS MISS SUGAR C4
KBHR Y068 HARLEY
DAM **RFS MISS AMARYLLIS A130**
X78

Act BW	90
Adj WW	750
Adj YW	1396
Frame Sc	6.0
ADG	4.05
WDA	3.93
Adj SC	40.1



Genomic Enhanced EPDs

EPD	CE	BW	WW	YW	ADG	MCE	Milk	MWW	Stay	Doc	CW	YG	Marb	BF	REA	API	TI
	4.3	8.2	110.4	184.8	0.47	0.8	28.1	83.2	16.6	17.7	74.5	-0.35	0.05	-0.091	1.21	123.8	88.6
%			1	1	1		20	1	50	2	1			35	4		15

- Homo black, homo polled
- Ratios BW 99, WW 102
- Dam is a 9 year old 3/4 blood with a 366 day calving interval

35

J132

Rydeen Farms

Hetero Black | Homo Polled | PB SM | Yearling Bull
BD: 3/19/21 | Tattoo: J132 | ASA#: 3933299

SIRE **LCDR IMPACT 134F**
WS MISS SUGAR C4
TNT TANKER U263
DAM **RFS MISS ARTIST A21**
U64



Act BW 94
Adj WW 766
Adj YW 1257
Frame Sc 5.5
ADG 3.09
WDA 3.59
Adj SC 40.8

Genomic Enhanced EPDs

CE	BW	WW	YW	ADG	MCE	Milk	MWW	Stay	Doc	CW	YG	Marb	BF	REA	API	TI
5.3	6.8	111.6	179.7	0.43	4.1	28.8	84.6	16.1	13.7	67.5	-0.36	0.23	-0.075	1.29	136.0	95.4
%		1	1	1		15	1		25	1		25		2	35	4

- Performance pedigree
- Ratios BW 104, WW 104
- Productive dam with BW 104 (6) & WW 103 (6)



Lot 35

36

J135

Rydeen Farms

Hetero Black | Homo Polled | PB SM | Yearling Bull
BD: 3/20/21 | Tattoo: J135 | ASA#: 3933302

SIRE **LCDR IMPACT 134F**
WS MISS SUGAR C4
MR NLC UPGRADE U8676
DAM **B137**
RF SIGRID S25



Act BW 90
Adj WW 848
Adj YW 1273
Frame Sc 5.5
ADG 2.67
WDA 3.61
Adj SC 41.9

Genomic Enhanced EPDs

CE	BW	WW	YW	ADG	MCE	Milk	MWW	Stay	Doc	CW	YG	Marb	BF	REA	API	TI
6.7	5.5	110.9	172.8	0.39	3.4	36.0	91.4	10.1	13.9	65.1	-0.49	0.19	-0.102	1.46	125.3	96.9
%		1	1	1		2	1		20	1	20	35	20	1		3

- Excellent carcass traits
- Explosive 205 day WT of 848
- Dam has had 6 calves in a 365 calving interval
- Knockout phenotype



Lot 36

37

J137

Rydeen Farms

Homo Black | Homo Polled | PB SM | Yearling Bull
BD: 3/20/21 | Tattoo: J137 | ASA#: 3933304

SIRE **LCDR IMPACT 134F**
WS MISS SUGAR C4
HART 003B
DAM **E188**
C131



Act BW 90
Adj WW 707
Adj YW 1237
Frame Sc 6.0
ADG 3.33
WDA 3.44
Adj SC 41.9

Genomic Enhanced EPDs

CE	BW	WW	YW	ADG	MCE	Milk	MWW	Stay	Doc	CW	YG	Marb	BF	REA	API	TI
11.4	2.5	83.0	123.9	0.26	6.9	21.6	63.0	17.4	11.5	22.8	-0.60	0.09	-0.091	1.33	134.0	86.5
%		45	30	35	40	30	45	40	50		1		35	2	40	40

- Good looking Impact son out of a Hart's 003B dam
- Solid pedigree and EPD profile



Lot 37

38

J169

Rydeen Farms

Homo Black | Homo Polled | PB SM | Yearling Bull
BD: 3/30/21 | Tattoo: J169 | ASA#: 3933336

SIRE **LCDR IMPACT 134F**
WS MISS SUGAR C4
MR NLC UPGRADE U8676
DAM **BRANT CONSTANCE C185X**
BRANT X185U



Act BW 92
Adj WW 810
Adj YW 1265
Frame Sc 5.5
ADG 2.86
WDA 3.61
Adj SC 42.4

Genomic Enhanced EPDs

CE	BW	WW	YW	ADG	MCE	Milk	MWW	Stay	Doc	CW	YG	Marb	BF	REA	API	TI
7.8	4.6	111.4	172.2	0.38	4.1	29.3	85.0	12.1	11.8	60.1	-0.42	0.15	-0.089	1.27	129.3	96.2
%		1	1	1		15	1		45	1		40		2		3

- Performance pedigree
- Ratios BW 101, WW 110
- 205 day WT of 810

39

J180

Rydeen Farms

Homo Black | Homo Polled | PB SM | Yearling Bull
BD: 4/5/21 | Tattoo: J180 | ASA#: 3933348

SIRE **LCDR IMPACT 134F**
WS MISS SUGAR C4
CLRS CONSTITUTION 311 C
DAM **F49**
B46



Act BW 92
Adj WW 738
Adj YW 1209
Frame Sc 5.3
ADG 2.98
WDA 3.37
Adj SC 38

Genomic Enhanced EPDs

CE	BW	WW	YW	ADG	MCE	Milk	MWW	Stay	Doc	CW	YG	Marb	BF	REA	API	TI
6.8	6.7	117.9	192.4	0.47	3.3	25.8	84.7	13.8	17.4	84.0	-0.39	0.24	-0.090	1.47	136.8	99.7
%		1	1	1		35	1		2	1		25		1	35	2

- Tremendous performance out of a second calf heifer
- Top 1% growth number with excellent carcass traits

YEARLING BULLS



Lot 40

40

J158

Rydeen Farms

Homo Black | Homo Polled | PB SM | Yearling Bull
BD: 3/26/21 | Tattoo: J158 | ASA#: 3933325

SIRE **LCDR IMPACT 134F**
CDI MAINLINE 265D
WS MISS SUGAR C4
WS ALL-AROUND Z35
DAM **F154**
RFS MISS AMARYLLIS A130



Act BW	90
Adj WW	777
Adj YW	1342
Frame Sc	5.5
ADG	3.56
WDA	3.66
Adj SC	38.2

Genomic Enhanced EPDs

EPD	CE	BW	WW	YW	ADG	MCE	Milk	MWW	Stay	Doc	CW	YG	Marb	BF	REA	API	TI
9.0	5.8	116.1	188.2	0.45	4.2	26.7	84.7	15.3	14.7	62.1	-0.45	0.33	-0.084	1.42	149.1	102.9	
%		1	1	1		30	1		15	1	35	15		1	15	1	

- Excellent carcass combined with excellent growth numbers
- Power bull with great marbling numbers



Lot 41

41

J86

Rydeen Farms

Homo Black | Homo Polled | PB SM | Yearling Bull
BD: 3/5/21 | Tattoo: J86 | ASA#: 3933252

SIRE **LCDR IMPACT 134F**
CDI MAINLINE 265D
WS MISS SUGAR C4
TNT PUNCH Y260
DAM **B93**
W91

Act BW	90
Adj WW	816
Adj YW	1356
Frame Sc	5.9
ADG	3.39
WDA	3.83
Adj SC	38.0

EPD	CE	BW	WW	YW	ADG	MCE	Milk	MWW	Stay	Doc	CW	YG	Marb	BF	REA	API	TI
9.0	4.4	102.4	157.5	0.34	5.8	30.5	81.6	15.1	11.3	52.7	-0.35	0.16	-0.088	0.97	133.4	91.1	
%		1	2	4	50	10	2			2		40		30	45	10	

- Out of a 9 year old TNT Punch cow
- Performance pedigree
- DNA pending

TJ Heisman 388F Homozygous Polled | Homozygous Black

TJ Heisman 388F is the sire of lots 42-44. All three brothers sit at the top 1-2% for marbling and had impressive weaning weights in our not so optimal summer conditions this year. All three were raised by first calf heifers.



Lot 42

42

J9

Rydeen Farms

Homo Black | Homo Polled | PB SM | Yearling Bull
BD: 2/20/21 | Tattoo: J9 | ASA#: 3933176

SIRE **TJ HEISMAN 388F**
KOCH BIG TIMBER 685D
TJ 67D
DAM **RFS MISS BEACON G31**
HOOK'S BEACON 56B
E94



Act BW	86
Adj WW	716
Adj YW	1242
Frame Sc	5.5
ADG	3.32
WDA	3.26
Adj SC	40.3

EPD	CE	BW	WW	YW	ADG	MCE	Milk	MWW	Stay	Doc	CW	YG	Marb	BF	REA	API	TI
12.5	-0.7	89.2	139.1	0.31	7.7	26.9	71.5	23.5	16.7	36.6	-0.24	0.64	-0.024	0.91	184.8	101.0	
%		30	15	15	10	15	20	25	15	1	4	25		1	45	1	1

- Exceptional calf on paper and in person
- Excellent weaning, yearling EPDs
- Attractive phenotype

43

J35

Rydeen Farms

Homo Black | Homo Polled | PB SM | Yearling Bull
BD: 2/26/21 | Tattoo: J35 | ASA#: 3933201

SIRE KOCH BIG TIMBER 685D
TJ HEISMAN 388F
TJ 67D
DAM WS PROCLAMATION E202
RFS MISS PROCLAMATION G63
D38



Act BW	86
Adj WW	708
Adj YW	1203
Frame Sc	5.5
ADG	3.12
WDA	3.16
Adj SC	37.7

Genomic Enhanced EPDs

	CE	BW	WW	YW	ADG	MCE	Milk	MWW	Stay	Doc	CW	YG	Marb	BF	REA	API	TI
EPD	13.0	-0.6	80.8	120.2	0.25	7.9	29.9	70.2	16.4	13.7	24.2	-0.34	0.56	-0.067	0.74	162.8	94.4
%	25	15	40	40	45	15	15	20		25			2			5	5

- Double digit calving ease
- Top 2% marbling
- First calf heifer did a wonderful job



Lot 43

44

J54

Rydeen Farms

Homo Black | Homo Polled | PB SM | Yearling Bull
BD: 2/28/21 | Tattoo: J54 | ASA#: 3933220

SIRE KOCH BIG TIMBER 685D
TJ HEISMAN 388F
TJ 67D
DAM HOOK'S BEACON 56B
RFS MISS GABBY G60
BRANT NUTMEG Y546R



Act BW	91
Adj WW	834
Adj YW	1474
Frame Sc	6.1
ADG	4.04
WDA	3.93
Adj SC	38.8

Genomic Enhanced EPDs

	CE	BW	WW	YW	ADG	MCE	Milk	MWW	Stay	Doc	CW	YG	Marb	BF	REA	API	TI
EPD	6.6	3.0	99.9	158.0	0.36	2.4	30.9	80.8	20.4	9.6	51.5	-0.34	0.63	-0.050	1.20	158.7	98.5
%			2	2	2		10	2	10		3		1		5	10	2

- Performance pedigree
- Weaned at 834, out of a first calf heifer
- Top 1% marbling
- Powerful cow family



YEARLING BULLS

UNDERSTANDING EPDS

Expected Progeny Differences (EPDs): EPDs are the most accurate and effective tool available for comparing genetic levels. In using EPDs, the difference between two sires' EPDs represents the unit difference expected in the performance of their progeny. For example, if sires A and B have EPDs of +10 and -5, a 15-unit difference would be expected in their progeny (moving from -5 to +10 yields 15 units). Key to using EPDs is knowing in what units they are expressed. For example, if the above case referred to weaning weight EPDs, sire A would be expected to sire 15 pounds more weaning weight than sire B. If calving ease was the trait, sire A would be expected to sire 15 percent more unassisted births in first-calf heifers; in other words, if sire B sired 30 assists in a group of 100 heifers, we would expect sire A to require 15 assists. A percentile-ranking chart is required to determine where a bull's EPDs rank him relative to other bulls in the breed. For more detailed information about EPDs and \$ indexes, visit www.simmental.org. Listed below are the units in which ASA EPDs are expressed:

- Calving Ease (CE):** Percent of unassisted births when used on heifers.
- Birth Weight (BW):** Pounds of birth weight.
- Weaning Weight (WW):** Pounds of weaning weight.
- Yearling Weight (YW):** Pounds of yearling weight.
- Maternal Calving Ease (MCE):** Percent of unassisted births in first-calving daughters.
- Milk (MLK):** Pounds of weaning weight due to milk.
- Maternal Weaning Weight (MWW):** Pounds of weaning weight due to milk and growth.
- Stayability (STAY):** Percent of daughters remaining in the cowherd at six years of age.
- Docility (DOC):** Percent of offspring receiving a disposition score of 1 (docile).
- Carcass Weight (CW):** Pounds of carcass weight at 475 days.
- Yield Grade (YG):** Carcass yield grade score at 475 days.
- Marbling (Marb):** Carcass marbling score at 475 days.

- Back Fat (BF):** Inches of carcass back fat at 475 days.
- Ribeye Area (REA):** Square inches of carcass ribeye at 475 days.
- Warner-Bratzler Shear Force (WBSF):** Pounds of force required to shear a rib-eye steak.
- All-Purpose Index (API):** Dollars per cow exposed under an all-purpose-sire scenario. (See \$ Indexes for more details.)
- Terminal Index (TI):** Dollars per cow exposed under a terminal-sire scenario. (See TI for more details.)
- \$ Indexes:** Though EPDs allow for the comparison of genetic levels for many economically important traits, they only provide pieces of the economic puzzle. This is where \$ indexes come in. Through well-conceived, rigorous mathematical computation, \$ indexes blend EPDs and economics to estimate an animal's overall impact on integrated commercial production. The same technology that led to the dramatic progress in swine, poultry and dairy genetics over the last several decades was used to develop the following \$ indexes:
 - All-Purpose Index (API):** Evaluates sires for use on the entire cow herd (bred to both Angus first-calf heifers and mature cows) with the portion of their daughters required to maintain herd size retained and the remaining heifers and steers put on feed and sold grade and yield.
 - Terminal Index (TI):** Evaluates sires for use on mature Angus cows with all offspring put on feed and sold grade and yield.
 - Using API and TI:** First, determine which index to use; if you are keeping replacements use API, if not, use TI. Then, just as with EPDs, zero in on the unit difference between bulls. (As described above, index units are in dollars per cow exposed.) The difference can be used to determine how much a bull is worth compared to another. Put another way, how much you can pay for one bull compared to another. For example, when buying an all-purpose-type sire, you can quickly figure a bull scoring +100 for API is worth an extra \$6,000 over a +50 bull if both are exposed to 30 cows over 4 years (\$50 diff. x 30 hd. x 4 yr.= \$6,000). A percentile-ranking chart is required to determine where a bull's index value ranks him relative to other bulls in the breed. For more detailed information about EPDs and \$ indexes, visit: www.simmental.org



BCLR Cash Flow C820

Homozygous Polled | Homozygous Black

We flushed our favorite Proclamation female to BCLR Cash Flow C820. Lots 45- 49 are the results of this great mating. The five flush mates have double digit calving ease while maintaining excellent growth and carcass numbers. An attractive phenotype and good disposition to boot! Check them out!



Lot 45



Lot 46



Lot 47

45

J88

Rydeen Farms

Homo Black | Homo Polled | PB SM | Yearling Bull
BD: 3/5/21 | Tattoo: J88 | ASA#: 3933254

CCR WIDE RANGE 9005A
SIRE BCLR CASH FLOW C820
BCLR MISS MONICA U820
WS PROCLAMATION E202
DAM RFS MISS GENIE G82
RFS MISS CHARLOTTE C39



Act BW	90
Adj WW	810
Adj YW	1456
Frame Sc	6.0
ADG	4.05
WDA	4.05
Adj SC	41.0

Genomic Enhanced EPDs

CE	BW	WW	YW	ADG	MCE	Milk	MWW	Stay	Doc	CW	YG	Marb	BF	REA	API	TI
17.8	0.0	101.9	155.1	0.33	9.2	15.1	66.0	19.7	11.7	48.1	-0.39	0.39	-0.067	1.21	174.7	101.8
%	2	20	1	2	10	5	35	15	50	4	10			4	2	1

- Double digit calving ease
- Great disposition
- Impressive EPD profile

46

J70

Rydeen Farms

Homo Black | Homo Polled | PB SM | Yearling Bull
BD: 3/2/21 | Tattoo: J70 | ASA#: 3933236

CCR WIDE RANGE 9005A
SIRE BCLR CASH FLOW C820
BCLR MISS MONICA U820
WS PROCLAMATION E202
DAM RFS MISS GENIE G82
RFS MISS CHARLOTTE C39



Act BW	91
Adj WW	554
Adj YW	1130
Frame Sc	5.5
ADG	3.61
WDA	3.13
Adj SC	36.9

Genomic Enhanced EPDs

CE	BW	WW	YW	ADG	MCE	Milk	MWW	Stay	Doc	CW	YG	Marb	BF	REA	API	TI
15.8	-0.3	93.9	146.2	0.33	7.8	15.1	62.0	21.3	16.8	38.9	-0.36	0.25	-0.059	1.04	165.3	93.6
%	5	20	10	5	10	20	50	5	4	20	25			20	4	5

- Beautiful phenotype
- Balanced EPD profile
- Moderate frame

47

J95

Rydeen Farms

Homo Black | Homo Polled | PB SM | Yearling Bull
BD: 3/6/21 | Tattoo: J95 | ASA#: 3933261

CCR WIDE RANGE 9005A
SIRE BCLR CASH FLOW C820
BCLR MISS MONICA U820
WS PROCLAMATION E202
DAM RFS MISS GENIE G82
RFS MISS CHARLOTTE C39



Act BW	95
Adj WW	712
Adj YW	1349
Frame Sc	6.2
ADG	3.99
WDA	3.75
Adj SC	40.1

Genomic Enhanced EPDs

CE	BW	WW	YW	ADG	MCE	Milk	MWW	Stay	Doc	CW	YG	Marb	BF	REA	API	TI
12.4	1.4	102.0	159.1	0.36	5.9	15.1	66.1	20.5	14.1	48.3	-0.45	0.32	-0.069	1.36	163.9	98.2
%	30	45	1	2	2	50	35	10	20	4	35	15		1	5	2

- He checks all the boxes
- Lots of performance and growth

48**J63**

Rydeen Farms

Homo Black | Homo Polled | PB SM | Yearling Bull
BD: 3/1/21 | Tattoo: J63 | ASA#: 3933229

SIRE **BCLR CASH FLOW C820**
BCLR MISS MONICA U820
WS PROCLAMATION E202

DAM **RFS MISS GENIE G82**
RFS MISS CHARLOTTE C39



Act BW	93
Adj WW	765
Adj YW	1381
Frame Sc	5.8
ADG	3.86
WDA	3.83
Adj SC	42.8

Genomic Enhanced EPDs

EPD	CE	BW	WW	YW	ADG	MCE	Milk	MWW	Stay	Doc	CW	YG	Marb	BF	REA	API	TI
	12.9	3.4	108.0	166.9	0.37	6.2	15.1	69.1	16.0	13.5	56.1	-0.41	0.32	-0.071	1.34	153.8	99.3
%	25		1	1	2	45		20		25	1		15		1	15	2

- High performance calf with G+ rating
- He gets it done

**Lot 48****49****J49**

Rydeen Farms

Homo Black | Homo Polled | PB SM | Yearling Bull
BD: 2/27/21 | Tattoo: J49 | ASA#: 3933215

SIRE **BCLR CASH FLOW C820**
BCLR MISS MONICA U820
WS PROCLAMATION E202

DAM **RFS MISS GENIE G82**
RFS MISS CHARLOTTE C39



Act BW	90
Adj WW	695
Adj YW	1290
Frame Sc	5.8
ADG	3.73
WDA	3.57
Adj SC	37.2

Genomic Enhanced EPDs

EPD	CE	BW	WW	YW	ADG	MCE	Milk	MWW	Stay	Doc	CW	YG	Marb	BF	REA	API	TI
	13.5	1.1	105.1	166.2	0.38	6.3	15.1	67.6	21.6	15.8	48.7	-0.33	0.22	-0.058	1.09	163.6	97.7
%	20	40	1	1	1	40		25	4	10	4		30		15	5	2

- Calving ease with performance
- Top API and TI percentiles

**Lot 49**

YEARLING BULLS



Hook's Eagle 6E

Homozygous Polled | Homozygous Black

Hook's Eagle 6E is a 3/4 blood Blackhawk son that offers a stellar phenotype combined with the growth we look for. Lots 50-52 and lots 111 and 112 in the open heifer division are flush mates out of our F41 Constitution daughter; the bulls are consistent and the females are fancy. There are three Ace certified bulls in this sire group if you are in the market for a true heifer bull.

50**J10**

Rydeen Farms

Hetero Black | Homo Polled | 3/4 SM 1/4 AN | Yearling Bull
BD: 2/20/21 | Tattoo: J10 | ASA#: 3933177

SIRE **HOOK'S BLACK HAWK 50B**
HOOK'S EAGLE 6E
HOOK'S CRYSTAL 1C
CLRS CONSTITUTION 311 C

DAM **F41**
Y2



Act BW	88
Adj WW	582
Adj YW	1178
Frame Sc	5.3
ADG	3.74
WDA	3.25
Adj SC	36.8

Genomic Enhanced EPDs

EPD	CE	BW	WW	YW	ADG	MCE	Milk	MWW	Stay	Doc	CW	YG	Marb	BF	REA	API	TI
	14.5	-1.3	77.8	121.9	0.28	8.6	16.2	55.0	22.7	14.1	30.2	-0.32	0.51	-0.061	0.79	175.5	91.2
%	25	25	45	40	40	20			1	25		25	20	25	30	2	10

- Flush mate to J6 and J8
- Double digit calving ease
- Excellent economic indices (API, TI)

DVAuction

Broadcasting Real-Time Auctions

Never Miss An Auction Again!
Watch & Bid online for FREE!

Visit www.DVAuction.com
and Register Today!

For General Questions Please Contact Our Office:
(402) 316-5460 or support@dvauction.com



Lot 51



Lot 52



Lot 53



Lot 54

51

J8

Rydeen Farms | Hetero Black | Homo Polled | 3/4 SM 1/4 AN | Yearling Bull
BD: 2/20/21 | Tattoo: J8 | ASA#: 3933174

SIRE HOOK'S BLACK HAWK 50B
HOOK'S EAGLE 6E
HOOK'S CRYSTAL 1C
CLRS CONSTITUTION 311 C
DAM F41
Y2

Act BW	82
Adj WW	710
Adj YW	1393
Frame Sc	5.8
ADG	4.29
WDA	3.84
Adj SC	40.3

Genomic Enhanced EPDs																	
CE	BW	WW	YW	ADG	MCE	Milk	MWW	Stay	Doc	CW	YG	Marb	BF	REA	API	TI	
EPD	13.1	0.5	95.5	149.8	0.34	8.1	16.2	63.9	21.5	17.4	41.4	-0.28	0.43	-0.052	0.90	170.5	97.3
%	40		3	4	10	30		35	3	4	20	35	30	35	15	4	2

- Double digit calving ease
- Excellent carcass traits and performance
- Excellent disposition

52

J6

Rydeen Farms | Hetero Black | Homo Polled | 3/4 SM 1/4 AN | Yearling Bull
BD: 2/20/21 | Tattoo: J6 | ASA#: 3933172

SIRE HOOK'S BLACK HAWK 50B
HOOK'S EAGLE 6E
HOOK'S CRYSTAL 1C
CLRS CONSTITUTION 311 C
DAM F41
Y2

Act BW	82
Adj WW	661
Adj YW	1283
Frame Sc	5.5
ADG	3.91
WDA	3.54
Adj SC	40.3

Genomic Enhanced EPDs																	
CE	BW	WW	YW	ADG	MCE	Milk	MWW	Stay	Doc	CW	YG	Marb	BF	REA	API	TI	
EPD	14.7	-1.2	90.0	147.5	0.36	9.1	16.2	61.1	19.5	16.1	51.2	-0.31	0.41	-0.067	0.99	169.8	96.3
%	25	25	10	5	4	15		50	10	10	5	30	35	25	10	4	3

- Balanced EPDs in this 3/4 blood
- Ace certified heifer safe

53

J47

Rydeen Farms | Homo Black | Homo Polled | 3/4 SM 1/4 AN | Yearling Bull
BD: 2/27/21 | Tattoo: J47 | ASA#: 3933213

SIRE HOOK'S BLACK HAWK 50B
HOOK'S EAGLE 6E
HOOK'S CRYSTAL 1C
SVF ALLEGIANCE Y802
DAM D38
RFS MISS AGREE A83

Act BW	84
Adj WW	662
Adj YW	1218
Frame Sc	5.5
ADG	3.50
WDA	3.41
Adj SC	37.2

Genomic Enhanced EPDs																	
CE	BW	WW	YW	ADG	MCE	Milk	MWW	Stay	Doc	CW	YG	Marb	BF	REA	API	TI	
EPD	14.3	-1.3	88.0	136.6	0.30	7.3	19.0	62.9	16.9	14.7	40.3	-0.24	0.39	-0.047	0.80	150.3	89.8
%	25	25	15	15	25	40		40	30	20	25	50	35	50	25	20	15

- Double digit calving ease
- Ace certified heifer safe

54

J41

Rydeen Farms | Homo Black | Homo Polled | 5/8 SM 3/8 AN | Yearling Bull
BD: 2/27/21 | Tattoo: J41 | ASA#: 3933207

SIRE HOOK'S BLACK HAWK 50B
HOOK'S EAGLE 6E
HOOK'S CRYSTAL 1C
TNT DUAL FOCUS T249
DAM D30
B116

Act BW	89
Adj WW	700
Adj YW	1176
Frame Sc	5.3
ADG	3.00
WDA	3.32
Adj SC	38.7

Genomic Enhanced EPDs																	
CE	BW	WW	YW	ADG	MCE	Milk	MWW	Stay	Doc	CW	YG	Marb	BF	REA	API	TI	
EPD	11.3	-0.1	90.2	140.5	0.31	4.6	19.7	64.7	15.4	19.2	33.1	-0.32	0.46	-0.045	0.94	146.4	91.4
%		45	10	10	20			30	50	1	45	25	25	50	10	25	10

- Homo black, Homo polled 5/8 blood
- Double digit calving ease
- Excellent carcass traits
- Standout phenotype

55**J56**

Rydeen Farms **Homo Black | Homo Polled | 3/4 SM 1/4 AN | Yearling Bull**
 BD: 3/1/21 | Tattoo: J56 | ASA#: 3933222

SIRE **HOOK'S BLACK HAWK 50B**
HOOK'S EAGLE 6E
 HOOK'S CRYSTAL 1C
 TNT DUAL FOCUS T249

DAM **B66**
 W3



Act BW	82
Adj WW	692
Adj YW	1189
Frame Sc	5.4
ADG	3.12
WDA	3.37
Adj SC	40.3

Genomic Enhanced EPDs

EPD	CE	BW	WW	YW	ADG	MCE	Milk	MWW	Stay	Doc	CW	YG	Marb	BF	REA	API	TI
	13.7	-4.0	73.5	107.4	0.21	6.2	22.0	58.7	20.6	19.8	29.9	-0.32	0.71	-0.028	1.05	172.2	92.2
%	35	4							4	1		25	5		4	3	10

- Raised himself
- Ace certified heifer safe
- Excellent carcass quality and economic indices with performance

**Lot 55**

CCR Cowboy Cut 5048Z

Homozygous Polled | Homozygous Black

The Cowboy Cut progeny has been really well accepted and we have 10 excellent sons this year. Our Cowboy Cut daughters are fertile, moderate framed with beautiful udders.

YEARLING BULLS

56**J91**

Rydeen Farms **Homo Black | Homo Polled | 3/4 SM 1/4 AN | Yearling Bull**
 BD: 3/5/21 | Tattoo: J91 | ASA#: 3933257

SIRE **TRIPLE C SINGLETARY S3H**
CCR COWBOY CUT 5048Z
 CCR MS 4045 TIME 7322T
 CLRS CONSTITUTION 311 C

DAM **F32**
 D12



Act BW	87
Adj WW	645
Adj YW	1158
Frame Sc	5.9
ADG	3.24
WDA	3.18
Adj SC	38.0

Genomic Enhanced EPDs

EPD	CE	BW	WW	YW	ADG	MCE	Milk	MWW	Stay	Doc	CW	YG	Marb	BF	REA	API	TI
	9.3	3.2	87.9	136.5	0.30	6.2	18.7	62.6	16.3	13.4	48.8	-0.34	0.43	-0.067	1.03	147.6	89.3
%			15	15	25			40	40	35	10	20	30	25	5	20	15

- Homo black, homo polled 3/4 blood
- Attractive phenotype

**Lot 56****57****J157**

Rydeen Farms **Homo Black | Homo Polled | PB SM | Yearling Bull**
 BD: 3/25/21 | Tattoo: J157 | ASA#: 3933324

SIRE **TRIPLE C SINGLETARY S3H**
CCR COWBOY CUT 5048Z
 CCR MS 4045 TIME 7322T
 CCR WIDE RANGE 9005A

DAM **BCLR MISS WIDE RNG C545**
 BCLR MS PAYLA P5



Act BW	92
Adj WW	735
Adj YW	1292
Frame Sc	6.0
ADG	3.49
WDA	3.67
Adj SC	43.1

Genomic Enhanced EPDs

EPD	CE	BW	WW	YW	ADG	MCE	Milk	MWW	Stay	Doc	CW	YG	Marb	BF	REA	API	TI
	12.6	1.9	88.2	128.2	0.25	6.9	22.4	66.4	22.2	12.3	20.7	-0.33	0.28	-0.049	0.79	156.0	87.6
%	30		15	25	45	30		30	2	40			20			10	15

- Excellent disposition
- Ratios BW 103, WW 100
- Excellent phenotype

**Lot 57**

58

J50

Rydeen Farms Homo Black | Homo Polled | 3/4 SM 1/4 AN | Yearling Bull
BD: 2/28/21 | Tattoo: J50 | ASA#: 3933216

SIRE TRIPLE C SINGLETARY S3H
CCR COWBOY CUT 5048Z
CCR MS 4045 TIME 7322T
G A R MOMENTUM
DAM RFS MISS MOMENTUM G113
KNH SUPERIOR 146Z



Act BW	87
Adj WW	714
Adj YW	1184
Frame Sc	5.8
ADG	2.99
WDA	3.18
Adj SC	39.3

Genomic Enhanced EPDs

EPD	CE	BW	WW	YW	ADG	MCE	Milk	MWW	Stay	Doc	CW	YG	Marb	BF	REA	API	TI
13.4	1.1	80.6	118.1	0.23	6.7	24.2	64.5	21.0	15.3	36.0	-0.34	0.46	-0.041	1.10	152.7	84.4	
%	35	30	50			40	30	3	15	35	20	25	50	3	15	25	

- Homo black, homo polled 3/4 blood
- Strong calving ease
- Beautiful SimAngus dam



Lot 60



Lot 61

62

J94

Rydeen Farms Homo Black | Homo Polled | PB SM | Yearling Bull
BD: 3/6/21 | Tattoo: J94 | ASA#: 3933260

SIRE TRIPLE C SINGLETARY S3H
CCR COWBOY CUT 5048Z
CCR MS 4045 TIME 7322T
CLRS CONSTITUTION 311 C
DAM F142
D140



Act BW	85
Adj WW	658
Adj YW	1118
Frame Sc	5.3
ADG	2.90
WDA	3.05
Adj SC	40.1

Genomic Enhanced EPDs

EPD	CE	BW	WW	YW	ADG	MCE	Milk	MWW	Stay	Doc	CW	YG	Marb	BF	REA	API	TI
13.6	1.0	84.7	127.1	0.27	9.2	19.4	61.7	18.5	19.0	33.2	-0.39	0.30	-0.072	0.97	152.7	87.6	
%	20	40	25	25	30	5		30	1	35			15		30	15	15

- Homo black, homo polled
- Calving ease
- Moderate framed bull

59

J92

Rydeen Farms Homo Black | Homo Polled | 3/4 SM 1/4 AN | Yearling Bull
BD: 3/5/21 | Tattoo: J92 | ASA#: 3933258

SIRE TRIPLE C SINGLETARY S3H
CCR COWBOY CUT 5048Z
CCR MS 4045 TIME 7322T
TNT DUAL FOCUS T249
DAM B41
RFS MISS Z93



Act BW	90
Adj WW	622
Adj YW	1108
Frame Sc	5.5
ADG	3.05
WDA	3.15
Adj SC	38.0

Genomic Enhanced EPDs

EPD	CE	BW	WW	YW	ADG	MCE	Milk	MWW	Stay	Doc	CW	YG	Marb	BF	REA	API	TI
8.8	1.4	79.7	117.6	0.24	5.1	21.9	61.7	21.0	13.9	25.1	-0.35	0.38	-0.049	0.91	152.3	85.2	
%		35	50				45	3	30		20	40	50	15	15	25	

- G+ certified
- Dam has had 6 calves in a 366 day calving interval
- Great cow family

60

J85

Rydeen Farms Homo Black | Homo Polled | 3/4 SM 1/4 AN | Yearling Bull
BD: 3/5/21 | Tattoo: J85 | ASA#: 3933251

SIRE TRIPLE C SINGLETARY S3H
CCR COWBOY CUT 5048Z
CCR MS 4045 TIME 7322T
TNT AXIS X307
DAM B32
Y66



Act BW	87
Adj WW	689
Adj YW	1181
Frame Sc	5.5
ADG	3.09
WDA	3.35
Adj SC	40.0

Genomic Enhanced EPDs

EPD	CE	BW	WW	YW	ADG	MCE	Milk	MWW	Stay	Doc	CW	YG	Marb	BF	REA	API	TI
11.5	1.6	89.6	130.9	0.26	7.8	22.0	66.8	17.6	17.3	27.1	-0.34	0.25	-0.060	0.81	145.0	88.0	
%		10	25		35		20	25	4		20		35	25	25	15	

- Double digit calving ease 3/4 blood
- Dam is a 7 year old 5/8 blood

61

J102

Rydeen Farms Homo Black | Homo Polled | 3/4 SM 1/4 AN | Yearling Bull
BD: 3/10/21 | Tattoo: J102 | ASA#: 3933268

SIRE TRIPLE C SINGLETARY S3H
CCR COWBOY CUT 5048Z
CCR MS 4045 TIME 7322T
GW-WBF SUBSTANCE 820Y
DAM STAV MS SUBSTANCE 533C
FXSR 241 LAUREN 89U



Act BW	88
Adj WW	793
Adj YW	1330
Frame Sc	5.8
ADG	3.37
WDA	3.77
Adj SC	41.3

Genomic Enhanced EPDs

EPD	CE	BW	WW	YW	ADG	MCE	Milk	MWW	Stay	Doc	CW	YG	Marb	BF	REA	API	TI
10.3	2.6	90.5	132.5	0.26	4.8	21.4	66.6	14.9	18.2	45.4	-0.20	0.25	-0.047	0.73	136.0	86.5	
%		10	20				25		2	15			50	40	40	20	

- Homo black, homo polled 3/4 blood
- Out of a dam we purchased from Stavick Simmentals
- Highest WWT Cowboy Cut son

63

J139

Rydeen Farms Homo Black | Homo Polled | PB SM | Yearling Bull
BD: 3/21/21 | Tattoo: J139 | ASA#: 3933306

SIRE TRIPLE C SINGLETARY S3H
CCR COWBOY CUT 5048Z
CCR MS 4045 TIME 7322T
KNH SECURITY 258A
DAM D163
RFS MISS ASTRID A112



Act BW	88
Adj WW	789
Adj YW	1312
Frame Sc	5.9
ADG	3.29
WDA	3.72
Adj SC	42.9

Genomic Enhanced EPDs

EPD	CE	BW	WW	YW	ADG	MCE	Milk	MWW	Stay	Doc	CW	YG	Marb	BF	REA	API	TI
10.5	3.0	93.1	143.3	0.31	6.5	25.8	72.3	23.3	17.0	40.6	-0.27	0.18	-0.042	0.91	151.3	87.1	
%		10	10	15	35	35	15	1	3	15			35		45	15	20

- Homo black, homo polled
- Double digit calving ease
- Excellent performance

64

J89

Rydeen Farms | Hetero Black | Homo Polled | PB SM | Yearling Bull
BD: 3/5/21 | Tattoo: J89 | ASA#: 3933255

SIRE **CCR COWBOY CUT 5048Z**
CCR MS 4045 TIME 7322T
DAM **RFS MISS Z93**
U64



Act BW	88
Adj WW	741
Adj YW	1294
Frame Sc	6.0
ADG	3.47
WDA	3.64
Adj SC	41.0

Genomic Enhanced EPDs

CE	BW	WW	YW	ADG	MCE	Milk	MWW	Stay	Doc	CW	YG	Marb	BF	REA	API	TI
9.8	4.6	98.5	141.0	0.27	6.2	23.8	72.9	20.5	12.7	43.2	-0.30	0.27	-0.043	1.05	147.2	89.9
%		3	10	30	45	50	10	10	35	10		20		20	20	10

- Excellent carcass
- Balanced EPD profile



Lot 64

65

J152

Rydeen Farms | Homo Black | Homo Polled | PB SM | Yearling Bull
BD: 3/24/21 | Tattoo: J152 | ASA#: 3933319

SIRE **CCR COWBOY CUT 5048Z**
CCR MS 4045 TIME 7322T
DAM **F81**
RFS MISS CASEY C41



Act BW	90
Adj WW	742
Adj YW	1137
Frame Sc	5.5
ADG	2.49
WDA	3.15
Adj SC	41.1

Genomic Enhanced EPDs

CE	BW	WW	YW	ADG	MCE	Milk	MWW	Stay	Doc	CW	YG	Marb	BF	REA	API	TI	
11.5	2.3	96.8	141.2	0.28	6.6	23.8	72.1	15.2	17.0	30.3	-0.45	0.24	-0.094	0.93	142.1	92.0	
%	40		4	10	25	35	50	15		3	45	35	25	35	40	25	10

- Homo black, homo polled
- Out of a young Allegiance female
- Weaned at 742



Visit our website!

Join our email list, view sale videos and additional sale information by visiting our website at

www.rydeenfarms.com

YEARLING BULLS



KRJ HZN Direct Impact F805

Homozygous Polled | Heterozygous Black

We have used KRJ HZN Direct Impact F805 for a couple of years on our heifers and appreciate his calving ease coupled with performance and vigor. His EPD profile is tough to beat! Our bred heifers out of Direct Impact are awesome!

66

J51

Rydeen Farms | Homo Black | Homo Polled | PB SM | Yearling Bull
BD: 2/28/21 | Tattoo: J51 | ASA#: 3933217

SIRE **KRJ HZN DIRECT IMPACT F805**
OMF/DK DARLING D49
DAM **RFS MISS HIGH ROAD G127**
BRANT BEYONCE B2104



Act BW	84
Adj WW	647
Adj YW	1061
Frame Sc	5.2
ADG	2.60
WDA	2.76
Adj SC	38.8

Genomic Enhanced EPDs

CE	BW	WW	YW	ADG	MCE	Milk	MWW	Stay	Doc	CW	YG	Marb	BF	REA	API	TI
12.9	1.3	83.2	128.5	0.28	7.0	26.4	67.9	19.1	9.3	41.2	-0.44	0.31	-0.066	1.27	153.1	87.6
%	25	45	30	25	25	30	30	25	20	15	40	15		2	15	15

- Double digit calving ease
- Excellent carcass traits
- Top percentile API and TI



Lot 66

67

J1

Rydeen Farms

Homo Black | Homo Polled | PB SM | Yearling Bull
BD: 2/18/21 | Tattoo: J1 | ASA#: 3933166

SIRE HOOK'S BLACK HAWK 50B
KRJ HZN DIRECT IMPACT F805
OMF/DK DARLING D49
WS PROCLAMATION E202
DAM RFS MISS PROCLAMATION G13
E169



Act BW	78
Adj WW	759
Adj YW	1326
Frame Sc	5.8
ADG	3.57
WDA	3.50
Adj SC	39.2

Genomic Enhanced EPDs

EPD	CE	BW	WW	YW	ADG	MCE	Milk	MWW	Stay	Doc	CW	YG	Marb	BF	REA	API	TI
%	14.6	1.4	93.5	139.3	0.29	7.9	27.9	74.6	19.1	16.2	57.5	-0.31	0.46	-0.050	1.18	166.0	96.9
%	10	45	10	10	20	15	20	10	20	5	1		5		10	4	3

- Calving ease bull
- Out of a first calf Proclamation heifer
- Excellent carcass traits, API and TI

68

J24

Rydeen Farms

Homo Black | Homo Polled | 3/4 SM 1/4 AN | Yearling Bull
BD: 2/23/21 | Tattoo: J24 | ASA#: 3933190

SIRE HOOK'S BLACK HAWK 50B
KRJ HZN DIRECT IMPACT F805
OMF/DK DARLING D49
G A R RELEVANCE
DAM RFS MISS RELEVANCE G83
D107



Act BW	78
Adj WW	726
Adj YW	1229
Frame Sc	5.3
ADG	3.19
WDA	3.29
Adj SC	36.5

Genomic Enhanced EPDs

EPD	CE	BW	WW	YW	ADG	MCE	Milk	MWW	Stay	Doc	CW	YG	Marb	BF	REA	API	TI
%	16.0	-1.7	77.0	122.2	0.28	8.3	27.2	65.7	19.6	15.9	40.9	-0.21	0.60	-0.018	0.91	165.5	89.7
%	15	20	45	40	40	25	20	25	10	10	20		10		15	5	15

- Nice set of EPDs in a 3/4 blood
- Out of a first calf (GAR Relevance) heifer
- Strong cow family

69

J78

Rydeen Farms

Hetero Black | Homo Polled | 3/4 SM 1/4 AN | Yearling Bull
BD: 3/3/21 | Tattoo: J78 | ASA#: 3933244

SIRE HOOK'S BLACK HAWK 50B
KRJ HZN DIRECT IMPACT F805
OMF/DK DARLING D49
KBHR NEXT LEVEL E206
DAM RFS MISS NEXT LEVEL G32
E135



Act BW	79
Adj WW	679
Adj YW	1199
Frame Sc	6.0
ADG	3.30
WDA	3.20
Adj SC	37.9

Genomic Enhanced EPDs

EPD	CE	BW	WW	YW	ADG	MCE	Milk	MWW	Stay	Doc	CW	YG	Marb	BF	REA	API	TI
%	17.4	1.7	90.5	143.7	0.33	9.7	25.4	70.6	15.5	13.5	54.2	-0.34	0.33	-0.036	1.35	144.6	87.7
%	10		10	10	10	10	30	10	45	30	3	20	45		1	25	20

- Top 10% calving ease
- Excellent carcass traits and EPD profile
- Out of a first calf heifer



CDI Schatz Outlaw 220E

Homozygous Polled | Homozygous Black

CDI Schatz Outlaw 220E is one of our herd sires purchased from C Diamond Simmentals. Phenotypically correct, he moves with ease and gets the job done for us. We don't have many Outlaw sons, but we like what we get!

70

J185

Rydeen Farms

Homo Black | Homo Polled | 3/4 SM 1/8 AN 1/8 CS | Yearling Bull
BD: 4/7/21 | Tattoo: J185 | ASA#: 3933353

SIRE CDI OUTLAW 292C
CDI SCHATZ OUTLAW 220E
CDI MS HIGH ROLLER 29Y
CLRS CONSTITUTION 311 C
DAM E27
C78



Act BW	91
Adj WW	696
Adj YW	1105
Frame Sc	5.8
ADG	2.57
WDA	3.12
Adj SC	41.8

Genomic Enhanced EPDs

EPD	CE	BW	WW	YW	ADG	MCE	Milk	MWW	Stay	Doc	CW	YG	Marb	BF	REA	API	TI
%	13.4	-0.2	68.3	103.5	0.22	8.3	23.2	57.3	20.2	13.9	14.4	-0.42	0.25	-0.049	1.00	148.8	78.3
%	35	40				25	50		10	30		10		50	10	20	50

- Calving ease
- Out of a strong cow family
- Top 20% API

71

J221

Rydeen Farms

Hetero Black | Homo Polled | 5/8 SM 3/8 AN | Yearling Bull
BD: 4/17/21 | Tattoo: J221 | ASA#: 3933392

SIRE CDI OUTLAW 292C
CDI SCHATZ OUTLAW 220E
CDI MS HIGH ROLLER 29Y
CONNELLY IRISH 0204
DAM D18
B41



Act BW	90
Adj WW	855
Adj YW	N/A
Frame Sc	5.8
ADG	3.77
WDA	4.17
Adj SC	43.4

Genomic Enhanced EPDs

EPD	CE	BW	WW	YW	ADG	MCE	Milk	MWW	Stay	Doc	CW	YG	Marb	BF	REA	API	TI
%	10.8	2.2	90.0	140.8	0.32	7.1	22.8	67.8	17.3	12.5	38.4	-0.36	0.23	-0.049	1.12	133.3	83.3
%			10	10	15	45		20	25	45	30	15		50	2	45	30

- Calving ease 5/8 blood with a handsome phenotype
- Out of a nice Conneally Irish dam
- Young calf with nicely balanced EPDs



WS Gadget 40G

Homozygous Polled | Red

We chose WS Gadget 40G as a high seller at Wilkinson Farms to lead the red side of our program. He is dark, dark red and attractive to look at. His EPD profile is excellent with calving ease and growth numbers. He has been a breeding machine and doesn't miss a beat!

72

J71

Rydeen Farms

Red | Homo Polled | PB SM | Yearling Bull
BD: 3/2/21 | Tattoo: J71 | ASA#: 3933237

SIRE **WS GADGET 40G**
KBHR SNIPER E036
WS EMOTION E127
WS ALL ABOARD B80
DAM **RFS MISS ALL ABOARD G22**
E178



Act BW	85
Adj WW	825
Adj YW	1420
Frame Sc	5.5
ADG	3.74
WDA	3.75
Adj SC	40.9

Genomic Enhanced EPDs

EPD	CE	BW	WW	YW	ADG	MCE	Milk	MWW	Stay	Doc	CW	YG	Marb	BF	REA	API	TI
	13.7	0.3	99.9	154.8	0.34	7.6	28.8	78.7	15.3	18.3	52.9	-0.29	0.37	-0.072	0.91	157.6	100.0
%	15	25	2	4	20	15	3	1	2	10	45	10	2				

- Top 15% calving ease
- Top weaning, yearling, MWW, TI
- Dark, cherry red
- Weaned at 825, out of a first calf heifer



Lot 72

YEARLING BULLS

73

J156

Rydeen Farms

Red | Homo Polled | PB SM | Yearling Bull
BD: 3/25/21 | Tattoo: J156 | ASA#: 3933323

SIRE **WS GADGET 40G**
KBHR SNIPER E036
WS EMOTION E127
35R
DAM **W4**
RF RIVER



Act BW	89
Adj WW	806
Adj YW	1306
Frame Sc	6.0
ADG	3.13
WDA	3.67
Adj SC	43.1

Genomic Enhanced EPDs

EPD	CE	BW	WW	YW	ADG	MCE	Milk	MWW	Stay	Doc	CW	YG	Marb	BF	REA	API	TI
	13.6	0.4	87.8	142.1	0.34	8.4	31.6	75.5	17.8	18.3	51.3	-0.33	0.13	-0.094	0.83	145.8	87.6
%	20	25	20	10	4	10	10	10	35	1	3	45	35		20	15	

- Calving ease performance bull
- Weaned at 806
- Dam has 11 natural calves in a 366 day interval



Lot 73

74

J122

Rydeen Farms

Red | Homo Polled | PB SM | Yearling Bull
BD: 3/17/21 | Tattoo: J122 | ASA#: 3933289

SIRE **WS GADGET 40G**
KBHR SNIPER E036
WS EMOTION E127
GW REDESTINED 642X
DAM **B26**
RFS MISS Z30



Act BW	89
Adj WW	696
Adj YW	1233
Frame Sc	6.0
ADG	3.36
WDA	3.50
Adj SC	38.7

Genomic Enhanced EPDs

EPD	CE	BW	WW	YW	ADG	MCE	Milk	MWW	Stay	Doc	CW	YG	Marb	BF	REA	API	TI
	13.0	1.0	92.0	142.5	0.32	7.5	27.6	73.5	17.7	18.0	49.8	-0.35	0.19	-0.088	0.92	147.4	90.0
%	25	40	10	10	10	20	25	10	40	2	3	35		40	20	10	

- Excellent disposition
- Excellent growth, economic indices
- Outcross pedigree



Lot 74

75

J155

Rydeen Farms Red | Homo Polled | PB SM | Yearling Bull
BD: 3/25/21 | Tattoo: J155 | ASA#: 3933322

SIRE KBHR SNIPER E036
WS GADGET 40G
WS EMOTION E127
ELLINGSON COMPLETE A358

DAM **E178**

B26

Genomic Enhanced EPDs

CE	BW	WW	YW	ADG	MCE	Milk	MWW	Stay	Doc	CW	YG	Marb	BF	REA	API	TI
14.0	2.4	99.4	150.4	0.32	8.4	27.2	76.8	16.7	17.8	39.4	-0.31	0.10	-0.076	0.77	141.7	90.3
%	15	2	3	10	10	25	4	50	2	20					25	10

Act BW	87
Adj WW	669
Adj YW	1194
Frame Sc	5.5
ADG	3.30
WDA	3.34
Adj SC	39.1



- Calving ease bull with excellent performance
- Balanced EPDs
- High growth numbers



Lot 77

76

J168

Rydeen Farms Red | Homo Polled | PB SM | Yearling Bull
BD: 3/29/21 | Tattoo: J168 | ASA#: 3933335

SIRE KBHR SNIPER E036
WS GADGET 40G
WS EMOTION E127
ELLINGSON COMPLETE A358

DAM **D168**

W4

Genomic Enhanced EPDs

CE	BW	WW	YW	ADG	MCE	Milk	MWW	Stay	Doc	CW	YG	Marb	BF	REA	API	TI
14.1	1.9	87.0	131.6	0.28	8.5	28.7	72.1	14.8	17.4	27.4	-0.37	0.14	-0.083	0.74	136.5	84.9
%	15	20	20	25	10	20	15		2			45			35	25

Act BW	88
Adj WW	734
Adj YW	1218
Frame Sc	5.8
ADG	3.04
WDA	3.45
Adj SC	37.8



- Solid red calving ease Gadget son
- Balanced EPD profile

77

J98

Rydeen Farms Red | Homo Polled | PB SM | Yearling Bull
BD: 3/8/21 | Tattoo: J98 | ASA#: 3933264

SIRE KBHR SNIPER E036
WS GADGET 40G
WS EMOTION E127
ELLINGSON COMPLETE A358

DAM **C182**

RF ROSALIA

Genomic Enhanced EPDs

CE	BW	WW	YW	ADG	MCE	Milk	MWW	Stay	Doc	CW	YG	Marb	BF	REA	API	TI
13.3	2.5	90.7	139.3	0.30	7.8	27.4	72.7	21.4	15.8	27.4	-0.39	0.26	-0.079	0.84	155.8	89.3
%	20	10	10	15	20	25	10	4	10			20			10	15

Act BW	82
Adj WW	683
Adj YW	1194
Frame Sc	5.9
ADG	3.20
WDA	3.35
Adj SC	40.2

- Good marbling, great performance numbers
- Strong cow family

78

J79

Rydeen Farms Red | Homo Polled | PB SM | Yearling Bull
BD: 3/3/21 | Tattoo: J79 | ASA#: 3933245

SIRE WS OUTCROSS C164
BRIDLE BIT BEST MAN F839
BRIDLE BIT MISS A382
KBHR KINGSMAN E144

DAM **RFS MISS KINGSMAN G110**

Z34

Genomic Enhanced EPDs

CE	BW	WW	YW	ADG	MCE	Milk	MWW	Stay	Doc	CW	YG	Marb	BF	REA	API	TI
11.9	1.4	80.4	112.2	0.20	5.9	18.6	58.8	17.1	14.5	40.0	-0.45	0.12	-0.102	1.00	134.0	79.4
%	35	45	40		50			45	15	15	35	50	20	25	40	45

Act BW	78
Adj WW	812
Adj YW	1297
Frame Sc	6.0
ADG	3.05
WDA	3.42
Adj SC	40.9



- Dam's a first calf heifer
- Weaned at 812

THANK YOU!

Thank You to the amazing people who we meet on our journey. We love hearing how the animals perform in your herd! We are extremely blessed with family, friends and teammates that support us year after year. A special shout out to Tyler, Gene, Matt, Gorde and the rest of the sale crew that are simply the best!

PUREBRED SIMMENTAL EPD AVERAGES

%	API	TI	CE	BW	WW	PWG	YW	MCE	MLK	MWW	STY	DOC	CWT	YG	MRB	BF	REA	SF
1	176.64	100.46	17.80	-3.30	101.70	0.37	159.10	10.60	36.00	81.60	22.80	18.20	55.50	-0.58	0.60	-0.13	1.33	-0.48
25	141.35	83.60	12.60	0.50	84.00	0.27	126.90	7.00	26.80	67.40	18.50	13.20	35.40	-0.46	0.22	-0.10	0.99	-0.38
50/Avg	129.32	77.60	10.70	1.70	77.30	0.24	115.10	5.60	23.40	61.90	16.40	11.40	28.50	-0.42	0.11	-0.09	0.87	-0.33

HYBRID SIMMENTAL EPD AVERAGES

%	API	TI	CE	BW	WW	PWG	YW	MCE	MLK	MWW	STY	DOC	CWT	YG	MRB	BF	REA	SF
1	185.09	99.07	20.40	-5.40	100.20	0.39	159.70	12.10	34.40	79.00	22.40	19.00	60.20	-0.50	0.95	-0.11	1.17	-0.49
25	143.59	84.33	14.20	-0.90	82.10	0.29	128.20	8.20	25.70	65.30	17.20	13.90	38.90	-0.31	0.44	-0.06	0.79	-0.38
50/Avg	129.73	77.89	12.20	0.50	75.20	0.26	116.10	6.70	22.80	60.30	15.00	12.00	31.20	-0.23	0.30	-0.04	0.65	-0.34



BCLR Cash Flow C820



Bridle Bit Best Man F839



CCR Cowboy Cut 5048Z



CDI SCHATZ Outlaw 220E



KRJ HZN Direct Impact F805



LCDR Impact 134F



TJ Heisman 388F



WS Gadget 40G



Hook's Eagle 6E

Reference Service Sires

PUREBRED SIMMENTAL REFERENCE SIRES

Name	ASA #	Sire x Dam	Breeds	CE	BW	WW	YW	ADG	MCE	Milk	MW	API	TI
BCLR Cash Flow C820	3071303	CCR Wide Range 9005A x BCLR Miss Monica U820	PB SM	13.7	0.8	100.0	155.6	0.35	5.7	0.0	50.0	158.0	89.9
Bridle Bit Best Man F839	3423917	WS Outcross C164 x Bridle Bit Miss A382	PB SM	12.0	-0.6	62.8	91.0	0.18	6.4	16.8	48.1	129.4	69.0
CCR Cowboy Cut 5048Z	2703910	Triple C Singletary S3H x CCR Ms 4045 Time 7322T	PB SM	11.6	2.6	97.4	137.8	0.25	7.6	23.8	72.5	162.3	94.9
CDI SCHATZ Outlaw 220E	3287061	CDI Outlaw 292C x CDI Ms High Roller 29Y	PB SM	12.1	2.8	83.9	124.3	0.25	7.5	24.2	66.1	133.2	81.8
ER PHOENIX H417	3816907	ERI Flight F402 x RFS Miss Etta E92	PB SM	19.9	-0.6	79.6	123.6	0.27	11.6	24.5	64.3	147.9	81.6
KRJ HZN Direct Impact F805	3468391	Hook's Black Hawk 50B x OMF/DK Darling D49	PB SM	17.1	-1.6	88.8	140.5	0.32	8.7	22.6	67.0	183.0	98.2
LCDR Impact 134F	3491039	CDI Mainline 265D x WS Miss Sugar C4	PB SM	5.4	5.9	126.6	202.7	0.48	2.5	32.4	95.7	136.1	106.7
TJ Heisman 388F	3459048	KOCH Big Timber 685D x TJ 67D	PB SM	9.8	0.8	91.2	137.8	0.29	5.5	30.9	76.4	164.8	96.6
WS Gadget 40G	3587940	KBHR Sniper E036 x WS Emotion E127	PB SM	16.9	0.5	100.3	155.6	0.35	9.1	33.2	83.3	160.7	98.6

SIMANGUS REFERENCE SIRES

Name	ASA #	Sire x Dam	Breeds	CE	BW	WW	YW	ADG	MCE	Milk	MW	API	TI
Hook's Eagle 6E	3253742	Hook's Black Hawk 50B x Hook's Crystal 1C	3/4 SM 1/4 AN	13.9	-2.0	102.0	161.8	0.37	6.5	19.2	70.2	170.1	104.1



BRED HEIFERS



Lot 79



RFS Miss Z73- Donor dam of Lots 81A, 81B, 81C, 81D, 81E

79 | RFS MISS HEIRESS H107

Rydeen Farms | Homo Black | Homo Polled | PB SM | Bred Heifer
 BD: 3/13/20 | Tattoo: H107 | ASA#: 3782069 | Adj. BW: 83 | Adj. WW: 678

SIRE **LCDR IMPACT 134F**
 CDI MAINLINE 265D
 WS MISS SUGAR C4
 ELLINGSON LOAD UP B4022

DAM **D175**
 KNH SUPERIOR 146Z



PROJECTED EPDS	
CE	12.8
BW	1.4
WW	96.9
YW	155.0
MCE	6.7
Milk	27.0
MWW	75.3

Genomic Enhanced EPDs																	
EPD	CE	BW	WW	YW	ADG	MCE	Milk	MWW	Stay	Doc	CW	YG	Marb	BF	REA	API	TI
	7.9	5.6	104.1	166.7	0.39	4.1	28.8	80.8	15.3	13.4	64.4	-0.47	-0.06	-0.089	1.47	121.0	86.0
%			1	1	1		15	2		25	1	25			1		20

- Stunning baldy
- Ultrasound safe to AI, predicts an early April calf
- AI bred to LRS Falcon 442G on 5/31, PE to ER Phoenix H417 from 6/26 to 8/14

80 | RFS MISS HIMALAYA H229

Rydeen Farms | Homo Black | Homo Polled | PB SM | Bred Heifer
 BD: 4/24/20 | Tattoo: H229 | ASA#: 3782192 | Adj. BW: 83 | Adj. WW: 635

SIRE **LCDR IMPACT 134F**
 CDI MAINLINE 265D
 WS MISS SUGAR C4
 CLRS CONSTITUTION 311 C

DAM **E98**
 U102



PROJECTED EPDS	
CE	14.4
BW	1.5
WW	90.1
YW	139.3
MCE	8.2
Milk	23.4
MWW	68.4

Genomic Enhanced EPDs																	
EPD	CE	BW	WW	YW	ADG	MCE	Milk	MWW	Stay	Doc	CW	YG	Marb	BF	REA	API	TI
	8.8	3.6	100.8	157.9	0.36	5.0	22.5	72.9	10.2	13.6	57.1	-0.39	0.20	-0.101	1.04	127.3	91.7
%			2	2	2			10		25	1	30		20	20		10

- Longevity in the pedigree
- Ultrasound predicts April calf
- AI bred to Hook's Galileo 210G on 6/19, PE to ER Phoenix H417 from 6/26 to 8/14

PICK YOUR CHOICE OF THE Z73 X IMPACT BRED HEIFERS • LOTS 81A-81E • ALL WILL BE SOLD!



Lot 81A



Lot 81B

81A | RFS MISS HELENA H34

Rydeen Farms | Homo Black | Homo Polled | PB SM | Bred Heifer
 BD: 3/1/20 | Tattoo: H34 | ASA#: 3781994 | Adj. BW: 90 | Adj. WW: 781

SIRE **LCDR IMPACT 134F**
 CDI MAINLINE 265D
 WS MISS SUGAR C4
 TNT TANKER U263

DAM **RFS MISS Z73**
 RF MISS J69



PROJECTED EPDS	
CE	14.9
BW	2.5
WW	97.8
YW	149.1
MCE	9.2
Milk	26.2
MWW	75.1

Genomic Enhanced EPDs																	
EPD	CE	BW	WW	YW	ADG	MCE	Milk	MWW	Stay	Doc	CW	YG	Marb	BF	REA	API	TI
	9.9	5.7	117.0	178.7	0.39	7.0	28.0	86.4	12.5	17.0	66.8	-0.49	-0.12	-0.117	1.35	118.5	92.0
%			1	1	1	30	20	1		3	1	20		10	1		10

- ET calf out of our favorite Tanker donor, Z73
- Ultrasound predicts an early April calf
- PE to ER Phoenix H417 from 6/26 to 8/14

81B | RFS MISS HALSTON H22

Rydeen Farms | Homo Black | Homo Polled | PB SM | Bred Heifer
 BD: 2/27/20 | Tattoo: H22 | ASA#: 3781982 | Adj. BW: 90 | Adj. WW: 774

SIRE **LCDR IMPACT 134F**
 CDI MAINLINE 265D
 WS MISS SUGAR C4
 TNT TANKER U263

DAM **RFS MISS Z73**
 RF MISS J69



PROJECTED EPDS	
CE	13.4
BW	1.3
WW	97.7
YW	152.0
MCE	7.6
Milk	28.8
MWW	77.6

Genomic Enhanced EPDs																	
EPD	CE	BW	WW	YW	ADG	MCE	Milk	MWW	Stay	Doc	CW	YG	Marb	BF	REA	API	TI
	9.1	5.2	112.0	173.7	0.39	6.4	28.0	84.0	11.7	12.3	60.0	-0.48	-0.01	-0.115	1.26	121.0	92.3
%			1	1	1	40	20	1		40	1	20		10	3		10

- ET calf out of our favorite Tanker donor, Z73
- Ultrasound safe to AI, predicts a mid-March calf
- AI bred to TJ Gold 274G on 6/1, PE to ER Phoenix H417 from 6/26 to 8/14

81C | RFS MISS HOBIE H25

Rydeen Farms | **Homo Black | Homo Polled | PB SM | Bred Heifer**
 BD: 2/28/20 | Tattoo: H25 | ASA#: 3781985 | Adj. BW: 84 | Adj. WW: 741

SIRE **LCDR IMPACT 134F**
 CDI MAINLINE 265D
 WS MISS SUGAR C4

DAM **RFS MISS Z73**
 TNT TANKER U263
 RF MISS J69



PROJECTED EPDS	
CE	13.4
BW	2.9
WW	96.7
YW	148.8
MCE	8.1
Milk	26.2
MWW	74.6

Genomic Enhanced EPDs

EPD	CE	BW	WW	YW	ADG	MCE	Milk	MWW	Stay	Doc	CW	YG	Marb	BF	REA	API	TI
	6.9	6.4	114.7	178.0	0.40	4.9	28.0	85.3	10.3	16.0	64.6	-0.56	-0.16	-0.140	1.35	106.8	88.8
%			1	1	1		20	1		10	1	3		1	1		15

- ET calf out of our favorite Tanker donor, Z73
- Ultrasound predicts an early April calf
- AI bred to Hook's Galileo 210G on 6/12, PE to ER Phoenix H417 from 6/26 to 8/14



Lot 81C

81D | RFS MISS HARLOW H21

Rydeen Farms | **Homo Black | Homo Polled | PB SM | Bred Heifer**
 BD: 2/27/20 | Tattoo: H21 | ASA#: 3781981 | Adj. BW: 89 | Adj. WW: 780

SIRE **LCDR IMPACT 134F**
 CDI MAINLINE 265D
 WS MISS SUGAR C4

DAM **RFS MISS Z73**
 TNT TANKER U263
 RF MISS J69



PROJECTED EPDS	
CE	11.0
BW	2.1
WW	101.8
YW	155.1
MCE	6.1
Milk	34.7
MWW	85.6

Genomic Enhanced EPDs

EPD	CE	BW	WW	YW	ADG	MCE	Milk	MWW	Stay	Doc	CW	YG	Marb	BF	REA	API	TI
	6.8	5.0	120.0	190.0	0.44	4.8	28.0	88.0	12.6	16.3	75.1	-0.43	0.13	-0.108	1.35	132.0	100.6
%			1	1	1		20	1		5	1	50	45	20	1	45	1

- ET calf out of our favorite Tanker donor, Z73
- Ultrasound is too close to call, predicts an early April calf
- AI bred to TJ 50K 485H on 6/23, PE to ER Phoenix H417 from 6/26 to 8/14



Lot 81D

81E | RFS MISS HOPE H19

Rydeen Farms | **Homo Black | Homo Polled | PB SM | Bred Heifer**
 BD: 2/27/20 | Tattoo: H19 | ASA#: 3781979 | Adj. BW: 92 | Adj. WW: 793

SIRE **LCDR IMPACT 134F**
 CDI MAINLINE 265D
 WS MISS SUGAR C4

DAM **RFS MISS Z73**
 TNT TANKER U263
 RF MISS J69



PROJECTED EPDS	
CE	10.9
BW	3.2
WW	97.4
YW	149.8
MCE	6.7
Milk	29.7
MWW	78.3

Genomic Enhanced EPDs

EPD	CE	BW	WW	YW	ADG	MCE	Milk	MWW	Stay	Doc	CW	YG	Marb	BF	REA	API	TI
	6.4	6.5	115.7	188.0	0.45	4.7	28.0	85.8	15.6	15.8	73.9	-0.49	-0.10	-0.103	1.55	121.2	90.8
%			1	1	1		20	1		10	1	20		20	1		10

- ET calf out of our favorite Tanker donor, Z73
- Ultrasound safe to AI, predicts a mid-March calf
- AI bred to TJ Platte River 370D on 6/1, PE to ER Phoenix H417 from 6/26 to 8/14



Lot 81E

82 | RFS MISS HURLEY H89

Rydeen Farms | **Hetero Black | Homo Polled | PB SM | Bred Heifer**
 BD: 3/11/20 | Tattoo: H89 | ASA#: 3782050 | Adj. BW: 88 | Adj. WW: 786

SIRE **LCDR IMPACT 134F**
 CDI MAINLINE 265D
 WS MISS SUGAR C4

DAM **B137**
 MR NLC UPGRADE U8676
 RF SIGRID S25



PROJECTED EPDS	
CE	12.6
BW	1.2
WW	97.1
YW	151.1
MCE	6.3
Milk	32.7
MWW	81.2

Genomic Enhanced EPDs

EPD	CE	BW	WW	YW	ADG	MCE	Milk	MWW	Stay	Doc	CW	YG	Marb	BF	REA	API	TI
	7.4	4.9	110.7	170.0	0.37	3.7	36.0	91.3	9.9	12.4	57.9	-0.45	0.21	-0.098	1.27	127.1	97.7
%			1	1	2		2	1		40	1	35	30	35	2		2

- The 8 year old Upgrade dam has 6 natural calves WW 115 (6)
- Proven cow family
- AI bred to TJ 50K 485H on 6/23, PE to ER Phoenix H417 from 6/26 to 8/14



Lot 82

BRED HEIFERS



Lot 83



Lot 84

83 | RFS MISS HOSTESS H222

Rydeen Farms | **Homo Black | Homo Polled | 3/4 SM 1/4 AN | Bred Heifer**
 BD: 4/22/20 | Tattoo: H222 | ASA#: 3782185 | Adj. BW: 82 | Adj. WW: 779

SIRE **LCDR IMPACT 134F**
 CDI MAINLINE 265D
 WS MISS SUGAR C4
 GW WOLFPACK 712A

DAM **PCR A328 WOLFPACK E789**
 PCR FUTURE FOCUS A328



PROJECTED EPDS	
CE	12.4
BW	1.1
WW	95.4
YW	156.7
MCE	7.7
Milk	27.1
MWW	74.7

Genomic Enhanced EPDs																
CE	BW	WW	YW	ADG	MCE	Milk	MWW	Stay	Doc	CW	YG	Marb	BF	REA	API	TI
7.1	5.0	105.4	170.0	0.40	3.7	26.7	79.4	12.0	15.8	57.1	-0.27	0.40	-0.062	0.95	128.7	93.2
%		1	1	1		20	1	2	10	2	40	35	25	10		10

- Extremely capacious female, one of our favorites
- Ultrasound safe to AI, predicts a late March calf
- AI bred to Hook's Galileo 210G on 6/14, PE to ER Phoenix H417 from 6/26 to 8/14

84 | RFS MISS HARIBO H152

Rydeen Farms | **Homo Black | Homo Polled | 3/4 SM 1/4 AN | Bred Heifer**
 BD: 3/24/20 | Tattoo: H152 | ASA#: 3782116 | Adj. BW: 87 | Adj. WW: 779

SIRE **LCDR IMPACT 134F**
 CDI MAINLINE 265D
 WS MISS SUGAR C4
 KBHR COMPASS C324

DAM **E21**
 RFS MISS AGREE A83



PROJECTED EPDS	
CE	12.8
BW	0.7
WW	92.9
YW	151.6
MCE	8.2
Milk	25.7
MWW	72.1

Genomic Enhanced EPDs																
CE	BW	WW	YW	ADG	MCE	Milk	MWW	Stay	Doc	CW	YG	Marb	BF	REA	API	TI
8.2	4.2	99.7	158.5	0.37	4.7	24.0	73.8	15.2	13.7	54.0	-0.33	0.31	-0.077	1.00	130.6	88.5
%		2	2	3		40	5	50	30	3	25	50	15	10	50	15

- Powerful 3/4 blood
- Ultrasound safe to AI, predicts a mid-March calf
- AI bred to Hook's Galileo 210G on 6/12, PE to ER Phoenix H417 from 6/26 to 8/14

85 | RFS MISS HEATHER H218

Rydeen Farms | **Hetero Black | Homo Polled | 3/4 SM 1/4 AN | Bred Heifer**
 BD: 4/20/20 | Tattoo: H218 | ASA#: 3782181 | Adj. BW: 74

SIRE **CLRS CONSTITUTION 311 C**
 J BAR J NIGHTRIDE 225Z
 CLRS AID XCELLENCE 311 A

DAM **Y176**
 ELLINGSON RIGHT ON W944
 RFS MISS T90



PROJECTED EPDS	
CE	15.9
BW	-0.7
WW	83.9
YW	132.3
MCE	9.3
Milk	25.7
MWW	67.6

Genomic Enhanced EPDs																
CE	BW	WW	YW	ADG	MCE	Milk	MWW	Stay	Doc	CW	YG	Marb	BF	REA	API	TI
14.1	1.1	84.5	130.9	0.29	9.5	21.8	64.0	17.7	14.4	31.1	-0.32	0.31	-0.073	0.72	152.5	87.9
%		30	20	25	30	15	35	25	25		25	50	15	40	15	15

- Nicely numbered 3/4 blood out of Constitution
- Ultrasound safe to AI, predicts a mid-March calf
- AI bred to TJ Gold 274G on 6/1, PE to ER Phoenix H417 from 6/26 to 8/14

86 | RFS MISS HARMONY H223

Rydeen Farms | **Black | Homo Polled | 5/8 SM 3/8 AN | Bred Heifer**
 BD: 4/22/20 | Tattoo: H223 | ASA#: 3782186 | Adj. BW: 77

SIRE **CLRS CONSTITUTION 311 C**
 J BAR J NIGHTRIDE 225Z
 CLRS AID XCELLENCE 311 A

DAM **Y66**
 WILDE'S ARMOR 6210
 RF SAMARA S85



PROJECTED EPDS	
CE	17.3
BW	0.5
WW	77.4
YW	121.7
MCE	11.2
Milk	20.2
MWW	58.8

Genomic Enhanced EPDs																
CE	BW	WW	YW	ADG	MCE	Milk	MWW	Stay	Doc	CW	YG	Marb	BF	REA	API	TI
14.6	1.5	74.7	119.6	0.28	10.6	15.7	53.0	16.1	14.0	25.8	-0.16	0.27	-0.037	0.42	132.0	74.8
%		25	45	40	5		40	25						50		

- 5/8 blood out of Constitution
- Ultrasound predicts early April calf
- PE to ER Phoenix H417 from 6/26 to 8/14

87 | RFS MISS HARLEQUIN H163

Rydeen Farms | **Homo Black | Hetero Polled | PB SM | Bred Heifer**
 BD: 3/28/20 | Tattoo: H163 | ASA#: 3782127 | Adj. BW: 89 | Adj. WW: 723

SIRE **CDI SCHATZ OUTLAW 220E**
 CDI OUTLAW 292C
 CDI MS HIGH ROLLER 29Y

DAM **BCLR MISS WIDE RNG C545**
 CCR WIDE RANGE 9005A
 BCLR MS PAYLA P5



PROJECTED EPDS	
CE	13.2
BW	0.4
WW	85.0
YW	130.2
MCE	6.7
Milk	26.1
MWW	68.6

Genomic Enhanced EPDs																
CE	BW	WW	YW	ADG	MCE	Milk	MWW	Stay	Doc	CW	YG	Marb	BF	REA	API	TI
8.7	3.2	85.9	125.8	0.25	4.2	22.6	65.5	17.3	10.8	22.0	-0.54	0.01	-0.069	1.30	124.3	78.4
%		20	30	45		35	45				5			2		50

- Really nice female out of a dam we purchased from Bichler Simmentals
- Ultrasound safe to AI, predicts a mid-March calf
- AI bred to TJ Gold 274G on 6/10, PE to ER Phoenix H417 from 6/26 to 8/14

88 | RFS MISS HADLEY H232

Rydeen Farms | **Homo Black | Homo Polled | PB SM | Bred Heifer**
 BD: 4/25/20 | Tattoo: H232 | ASA#: 3782194 | Adj. BW: 81 | Adj. WW: 572

SIRE **CDI SCHATZ OUTLAW 220E**
 CDI OUTLAW 292C
 CDI MS HIGH ROLLER 29Y

DAM **KSR DEBRA 731D**
 KNH WORLDWIDE 408B
 KSR GRAND DESIRE 121X



PROJECTED EPDS	
CE	15.0
BW	-0.6
WW	77.1
YW	124.1
MCE	9.6
Milk	25.2
MWW	63.7

Genomic Enhanced EPDs																
CE	BW	WW	YW	ADG	MCE	Milk	MWW	Stay	Doc	CW	YG	Marb	BF	REA	API	TI
12.5	1.7	68.4	102.4	0.21	7.3	22.7	56.8	17.1	11.4	10.4	-0.51	0.13	-0.075	1.01	132.2	73.5
%		30			25		45				15	45		25	45	

- Ultrasound safe to AI, predicts an early March calf
- AI bred to Hook's Galileo 210G on 5/31, PE to ER Phoenix H417 from 6/26 to 8/14

89 RFS MISS HAYDEN H141

Rydeen Farms **Homo Black | Homo Polled | 1/2 SM 1/2 AN | Bred Heifer**
BD: 3/18/20 | Tattoo: H141 | ASA#: 3782105 | Adj. BW: 85 | Adj. WW: 658

SIRE **BASIN RAINMAKER 4404**
BASIN RAINMAKER 2704
BASIN JOY 1036
3C PASQUE 4331B B
DAM **LRS MS 3C PASQUE 8037F**
LRS MS DUAL FOCUS 213Z

PROJECTED EPDS	
CE	14.3
BW	-0.2
WW	81.4
YW	135.9
MCE	10.1
Milk	25.1
MWW	65.7

Genomic Enhanced EPDs

EPD	CE	BW	WW	YW	ADG	MCE	Milk	MWW	Stay	Doc	CW	YG	Marb	BF	REA	API	TI
	11.2	2.3	77.3	127.0	0.31	8.4	22.5	61.1	12.3	13.7	31.0	-0.05	0.31	-0.020	0.28	117.4	74.5
%			45	30	20	25		50		30			50				

- Beautiful half blood out of a dam we purchased from Lassle Simmentals
- Ultrasound too close to call, predicts an early April calf
- AI bred to Hook's Galileo 210G on 6/13, PE to ER Phoenix H417 from 6/26 to 8/14



Lot 89

90 RFS MISS HEROINE H39

Rydeen Farms **Hetero Black | Homo Polled | PB SM | Bred Heifer**
BD: 3/2/20 | Tattoo: H39 | ASA#: 3781999 | Adj. BW: 90 | Adj. WW: 640

SIRE **KRJ HZN DIRECT IMPACT F805**
HOOK'S BLACK HAWK 50B
OMF/DK DARLING D49
CLRS CONSTITUTION 311 C
DAM **F34**
MISS GD B82



PROJECTED EPDS	
CE	15.7
BW	-3.0
WW	79.6
YW	127.4
MCE	8.7
Milk	24.7
MWW	64.4

Genomic Enhanced EPDs

EPD	CE	BW	WW	YW	ADG	MCE	Milk	MWW	Stay	Doc	CW	YG	Marb	BF	REA	API	TI
	13.8	-3.4	76.0	120.6	0.28	8.1	19.6	57.5	19.2	14.3	42.5	-0.15	0.49	-0.016	0.79	168.8	91.6
%			15	40	25	15			20	15	10		4			3	10

- High marbling with top API, TI
- Ultrasound safe to AI, predicts a mid-March calf
- AI bred to TJ Gold 274G on 6/2, PE to ER Phoenix H417 from 6/26 to 8/14



Lot 90

91 RFS MISS HELENE H33

Rydeen Farms **Hetero Black | Homo Polled | 3/4 SM 1/4 AN | Bred Heifer**
BD: 3/1/20 | Tattoo: H33 | ASA#: 3781993 | Adj. BW: 90 | Adj. WW: 625

SIRE **KRJ HZN DIRECT IMPACT F805**
HOOK'S BLACK HAWK 50B
OMF/DK DARLING D49
J BAR J NIGHTRIDE 225Z
DAM **F158**
D78



PROJECTED EPDS	
CE	15.6
BW	0.1
WW	80.9
YW	124.3
MCE	7.8
Milk	21.7
MWW	62.1

Genomic Enhanced EPDs

EPD	CE	BW	WW	YW	ADG	MCE	Milk	MWW	Stay	Doc	CW	YG	Marb	BF	REA	API	TI
	11.3	0.7	82.4	126.0	0.27	4.0	18.7	59.9	16.3	13.1	39.1	-0.38	0.64	-0.052	1.15	153.3	90.3
%			25	30	45				40	40	25	15	10	35	2	15	10

- 3/4 blood with excellent carcass traits
- Ultrasound predicts an April calf
- AI bred to TJ Platte River 370D on 6/12, PE to ER Phoenix H417 from 6/26 to 8/14



Lot 91

92 RFS MISS HEIRLOOM H26

Rydeen Farms **Hetero Black | Homo Polled | PB SM | Bred Heifer**
BD: 2/28/20 | Tattoo: H26 | ASA#: 3781986 | Adj. BW: 84 | Adj. WW: 655

SIRE **KRJ HZN DIRECT IMPACT F805**
HOOK'S BLACK HAWK 50B
OMF/DK DARLING D49
CLRS DIVIDEND 405D
DAM **F110**
RFS MISS Z25



PROJECTED EPDS	
CE	16.3
BW	-0.1
WW	88.4
YW	137.4
MCE	9.2
Milk	22.3
MWW	66.5

Genomic Enhanced EPDs

EPD	CE	BW	WW	YW	ADG	MCE	Milk	MWW	Stay	Doc	CW	YG	Marb	BF	REA	API	TI
	12.4	0.3	97.5	152.0	0.34	6.6	20.1	68.8	21.7	12.3	41.1	-0.29	-0.02	-0.047	0.95	146.9	88.0
%			30	25	3	4	35		20	3	40	15			35	20	15

- Excellent growth numbers, API and TI
- Ultrasound predicts an April calf
- PE to ER Phoenix H417 from 6/26 to 8/14

93 RFS MISS HOLLY H63

Rydeen Farms **Hetero Black | Homo Polled | 3/4 SM 1/4 AN | Bred Heifer**
BD: 3/6/20 | Tattoo: H63 | ASA#: 3782023 | Adj. BW: 87 | Adj. WW: 637

SIRE **KRJ HZN DIRECT IMPACT F805**
HOOK'S BLACK HAWK 50B
OMF/DK DARLING D49
J BAR J NIGHTRIDE 225Z
DAM **F12**
D97



PROJECTED EPDS	
CE	17.6
BW	-0.6
WW	79.0
YW	122.3
MCE	9.7
Milk	22.4
MWW	61.8

Genomic Enhanced EPDs

EPD	CE	BW	WW	YW	ADG	MCE	Milk	MWW	Stay	Doc	CW	YG	Marb	BF	REA	API	TI	
	15.4	-0.7	77.8	119.7	0.26	7.9	20.1	58.9	17.4	12.3	26.7	-0.22	0.41	-0.019	0.77	147.8	83.2	
%			20	30	45	45			30		25	50		35		30	20	30

- Great looking 3/4 blood with an EPD profile to match
- Ultrasound predicts early April calf
- AI bred to TJ Platte River 370D on 6/13, PE to ER Phoenix H417 from 6/26 to 8/14

BRED HEIFERS



Lot 94

94 | RFS MISS HOSANNA H174

Rydeen Farms | **Homo Black | Homo Polled | 3/4 SM 3/16 AN 1/16 AR | Bred Heifer**
BD: 3/30/20 | Tattoo: H174 | ASA#: 3782138 | Adj. BW: 79

W/C LOCK DOWN 206Z
SIRE **ES D-LUXE DB21**
ES B21
TRIPLE C INVASION R47K
DAM **RS MISS INVASION U102**
SF BLK NIRVANA 414



PROJECTED EPDS	
CE	16.9
BW	0.6
WW	81.8
YW	126.8
MCE	9.1
Milk	26.1
MWW	67.0

Genomic Enhanced EPDs

EPD	CE	BW	WW	YW	ADG	MCE	Milk	MWW	Stay	Doc	CW	YG	Marb	BF	REA	API	TI
	14.0	1.8	84.5	130.1	0.29	6.6	27.7	69.9	17.4	11.7	41.6	-0.31	0.07	-0.087	0.70	126.3	76.9
%	30	20	25	30		15	15	25			20	30		10	45		

- 3/4 blood out of a dam purchased from Thesing's Riverside Simmentals
- Ultrasound predicts an April calf
- AI bred to Hook's Galileo 210G on 6/11, PE to ER Phoenix H417 from 6/26 to 8/14

95 | RFS MISS HURRAH H196

Rydeen Farms | **Black | Homo Polled | 3/4 SM 3/16 AN 1/16 AR | Bred Heifer**
BD: 4/7/20 | Tattoo: H196 | ASA#: 3782159 | Adj. BW: 91

W/C LOCK DOWN 206Z
SIRE **ES D-LUXE DB21**
ES B21
TNT TANKER U263
DAM **RFS MISS Z71**
RF MISS J82

PROJECTED EPDS	
CE	13.6
BW	-0.9
WW	81.0
YW	130.6
MCE	10.0
Milk	29.1
MWW	69.5

Genomic Enhanced EPDs

EPD	CE	BW	WW	YW	ADG	MCE	Milk	MWW	Stay	Doc	CW	YG	Marb	BF	REA	API	TI
	9.7	1.0	74.9	113.1	0.24	8.1	30.5	67.9	19.0	11.0	25.8	-0.41	-0.14	-0.065	0.97	109.6	66.6
%						30	10	20	15			10		25	10		

- Nice 3/4 blood
- Ultrasound safe to AI, predicts a mid-March calf
- AI bred to Hook's Galileo 210G on 6/1, PE to ER Phoenix H417 from 6/26 to 8/14

96 | RFS MISS HYACINTH H213

Rydeen Farms | **Homo Black | Homo Polled | 3/4 SM 3/16 AN 1/16 AR | Bred Heifer**
BD: 4/16/20 | Tattoo: H213 | ASA#: 3782175 | Adj. BW: 89

W/C LOCK DOWN 206Z
SIRE **ES D-LUXE DB21**
ES B21
RF DEWPOINT W78
DAM **RFS MISS ACADEMIC A160**
RF SEQUEL S159

PROJECTED EPDS	
CE	14.7
BW	-0.6
WW	83.0
YW	132.3
MCE	9.2
Milk	26.8
MWW	68.2

Genomic Enhanced EPDs

EPD	CE	BW	WW	YW	ADG	MCE	Milk	MWW	Stay	Doc	CW	YG	Marb	BF	REA	API	TI
	12.0	1.6	79.0	116.5	0.23	6.5	26.0	65.4	16.5	11.0	42.3	-0.37	0.17	-0.068	1.05	124.6	75.7
%			40	50			25	25	35		20	15		25	4		

- Outcross 3/4 blood
- Ultrasound safe to AI, predicts a mid-March calf
- AI bred to Hook's Galileo 210G on 6/11, PE to ER Phoenix H417 from 6/26 to 8/14

97 | RFS MISS HOLLYWOOD H219

Rydeen Farms | **Hetero Black | Homo Polled | 3/4 SM 3/16 AN 1/16 AR | Bred Heifer**
BD: 4/20/20 | Tattoo: H219 | ASA#: 3782182 | Adj. BW: 74 | Adj. WW: 747

W/C LOCK DOWN 206Z
SIRE **ES D-LUXE DB21**
ES B21
ELLINGSON LEGACY M229
DAM **Y42**
RFS EFFIE H83

PROJECTED EPDS	
CE	16.9
BW	0.1
WW	82.8
YW	131.9
MCE	9.9
Milk	24.7
MWW	66.1

Genomic Enhanced EPDs

EPD	CE	BW	WW	YW	ADG	MCE	Milk	MWW	Stay	Doc	CW	YG	Marb	BF	REA	API	TI	
	13.9	0.7	86.1	139.9	0.34	8.2	24.9	67.9	19.3	10.9	59.2	-0.41	0.03	-0.106	1.08	132.4	79.0	
%			30	15	10	10	30	35	20	10		2	10		2	3	45	50

- Cow family has a lot of longevity
- Ultrasound predicts an April calf
- AI bred to Hook's Galileo 210G on 6/20, PE to ER Phoenix H417 from 6/26 to 8/14

98 | RFS MISS HOLLISTER H220

Rydeen Farms | **Homo Black | Homo Polled | 1/2 SM 7/16 AN 1/16 AR | Bred Heifer**
BD: 4/20/20 | Tattoo: H220 | ASA#: 3782183 | Adj. BW: 77 | Adj. WW: 720

W/C LOCK DOWN 206Z
SIRE **ES D-LUXE DB21**
ES B21
HART FINAL ANSWER 0048
DAM **B213**
RFS MISS Z187



PROJECTED EPDS	
CE	17.3
BW	-0.5
WW	80.5
YW	125.7
MCE	11.0
Milk	26.5
MWW	66.6

Genomic Enhanced EPDs

EPD	CE	BW	WW	YW	ADG	MCE	Milk	MWW	Stay	Doc	CW	YG	Marb	BF	REA	API	TI
	14.6	-0.3	82.2	128.5	0.29	10.4	28.3	69.3	15.7	11.0	58.6	-0.09	0.29	-0.055	0.47	137.4	82.6
%			25	40	25	30	10	15	15	45		2		35		40	35

- Half blood female with a balanced EPD profile
- Ultrasound predicts early April calf
- AI bred to TJ Platte River 370D on 6/12, PE to ER Phoenix H417 from 6/26 to 8/14

99 | RFS MISS HOLLAND H169

Rydeen Farms | **Homo Black | Homo Polled | PB SM | Bred Heifer**
BD: 3/29/20 | Tattoo: H169 | ASA#: 3782133 | Adj. BW: 94 | Adj. WW: 739

KOCH BIG TIMBER 685D
SIRE **TJ HEISMAN 388F**
TJ 67D
WS ALL-AROUND Z35
DAM **F154**
RFS MISS AMARYLLIS A130



PROJECTED EPDS	
CE	13.0
BW	2.2
WW	88.9
YW	141.0
MCE	7.1
Milk	25.1
MWW	69.5

Genomic Enhanced EPDs

EPD	CE	BW	WW	YW	ADG	MCE	Milk	MWW	Stay	Doc	CW	YG	Marb	BF	REA	API	TI
	6.0	4.8	97.4	157.8	0.38	2.5	25.7	74.3	15.8	14.8	31.0	-0.38	0.31	-0.091	0.75	138.3	91.1
%			3	2	1		35	10		15	45		15	35		35	10

- Lots of performance in this Heisman x All Around female
- Ultrasound predicts an April calf
- PE to ER Phoenix H417 from 6/26 to 8/14



Lot 99

100 RFS MISS HAILEY H72

Rydeen Farms Red | Homo Polled | PB SM | Bred Heifer
 BD: 3/8/20 | Tattoo: H72 | ASA#: 3782033 | Adj. BW: 97 | Adj. WW: 742

SIRE **BRIDLE BIT BEST MAN F839**
 WS OUTCROSS C164
 BRIDLE BIT MISS A382

DAM **F173**
 WS ALL ABOARD B80
 D98

PROJECTED EPDS	
CE	14.2
BW	0.6
WW	89.9
YW	135.9
MCE	7.8
Milk	27.1
MWW	72.0

Genomic Enhanced EPDs

	CE	BW	WW	YW	ADG	MCE	Milk	MWW	Stay	Doc	CW	YG	Marb	BF	REA	API	TI
EPD	11.3	0.6	79.6	117.1	0.23	6.5	21.1	60.8	14.6	18.6	39.0	-0.45	-0.04	-0.102	1.00	121.5	76.4
%	45	30	45	50		35				1	20	35		20	25		

- Ultrasound predicts mid-April calf
- PE to WS Gadget 40G from 6/10 to 8/4



Lot 100

101 RFS MISS HALSEY H225

Rydeen Farms Red | Homo Polled | PB SM | Bred Heifer
 BD: 4/23/20 | Tattoo: H225 | ASA#: 3782188 | Adj. BW: 80 | Adj. WW: 817

SIRE **KBHR KINGSMAN E144**
 WS ALL ABOARD B80
 KBHR Z041
 GW REDESTINED 642X

DAM **E91**
 RFS MISS Z52

PROJECTED EPDS	
CE	14.0
BW	1.6
WW	96.7
YW	142.2
MCE	7.7
Milk	29.3
MWW	77.6



Genomic Enhanced EPDs

	CE	BW	WW	YW	ADG	MCE	Milk	MWW	Stay	Doc	CW	YG	Marb	BF	REA	API	TI
EPD	10.9	2.6	93.4	129.6	0.23	6.2	25.2	71.8	12.5	15.5	44.3	-0.49	0.20	-0.119	1.06	130.7	88.3
%	50		10	25		45	40	15		10	10	20	30	10	15	50	15

- Excellent carcass traits
- Ultrasound predicts an April calf
- AI bred to CDI Flint 221F on 6/12, PE to WS Gadget 40G from 6/10 to 8/4



Lot 101

102 RFS MISS HADDIE H197

Rydeen Farms Red | Homo Polled | PB SM | Bred Heifer
 BD: 4/7/20 | Tattoo: H197 | ASA#: 3782160 | Adj. BW: 89 | Adj. WW: 785

SIRE **KBHR KINGSMAN E144**
 WS ALL ABOARD B80
 KBHR Z041
 TNT 90 PROOF Z401

DAM **D48**
 U1

PROJECTED EPDS	
CE	14.6
BW	1.5
WW	97.5
YW	147.3
MCE	7.9
Milk	28.9
MWW	77.5



Genomic Enhanced EPDs

	CE	BW	WW	YW	ADG	MCE	Milk	MWW	Stay	Doc	CW	YG	Marb	BF	REA	API	TI
EPD	12.3	2.5	94.3	139.0	0.28	6.8	24.6	71.7	11.4	16.2	34.1	-0.50	0.22	-0.104	1.07	133.5	90.3
%	30		10	10	25	30	45	15		5	30	15	30	20	15	45	10

- Excellent carcass traits
- Ultrasound predicts early April calf
- AI bred to CDI Flint 221F on 6/12, PE to WS Gadget 40G from 6/10 to 8/4



Lot 102

103 RFS MISS HARLYNN H90

Rydeen Farms Red | Homo Polled | PB SM | Bred Heifer
 BD: 3/11/20 | Tattoo: H90 | ASA#: 3782051 | Adj. BW: 95 | Adj. WW: 629

SIRE **BRIDLE BIT BEST MAN F839**
 WS OUTCROSS C164
 BRIDLE BIT MISS A382
 CDI BIG TIME 297D

DAM **F140**
 LRS MS AXIS 281Z

PROJECTED EPDS	
CE	15.0
BW	-0.2
WW	84.8
YW	126.3
MCE	8.2
Milk	25.4
MWW	67.8



Genomic Enhanced EPDs

	CE	BW	WW	YW	ADG	MCE	Milk	MWW	Stay	Doc	CW	YG	Marb	BF	REA	API	TI
EPD	13.1	-0.6	69.2	97.4	0.18	7.3	17.5	52.1	20.5	9.3	18.2	-0.35	0.09	-0.068	0.67	139.5	74.0
%	20	15				25			10							30	

- Ultrasound predicts mid-April calf
- PE to WS Gadget 40G from 6/10 to 8/4



Lot 103

BRED HEIFERS



Lot 104

104 | RFS MISS JEWEL J38

Rydeen Farms | **Homo Black | Homo Polled | PB SM | Open Heifer**
 BD: 2/26/21 | Tattoo: J38 | ASA#: 3933204 | Adj. BW: 88 | Adj. WW: 611

TRIPLE C SINGLETARY S3H
SIRE CCR COYBOY CUT 5048Z
 CCR MS 4045 TIME 7322T
 ELLINGSON LOAD UP B4022
DAM D80
 RFS MISS T131

	CE	BW	WW	YW	ADG	MCE	Milk	MWW	Stay	Doc	CW	YG	Marb	BF	REA	API	TI
EPD	11.0	2.8	80.2	121.4	0.26	6.3	23.4	63.4	21.0	14.6	32.2	-0.41	0.02	-0.067	1.06	134.1	75.9
%	50		40	40	40	40		45	10	15	40				15	40	

- Beautiful Cowboy Cut daughter
- Strong maternal pedigree
- Unique baldy Cowboy Cut opportunity!



Lot 105

105 | RFS MISS JOYFUL J28

Rydeen Farms | **Homo Black | Homo Polled | PB SM | Open Heifer**
 BD: 2/25/21 | Tattoo: J28 | ASA#: 3933194 | Adj. BW: 83

CDI MAINLINE 265D
SIRE LCDR IMPACT 134F
 WS MISS SUGAR C4
 3C PASQUE 4331B B
DAM LRS MS 3C PASQUE 8037F
 LRS MS DUAL FOCUS 213Z

	CE	BW	WW	YW	ADG	MCE	Milk	MWW	Stay	Doc	CW	YG	Marb	BF	REA	API	TI
EPD	8.1	3.8	98.5	162.9	0.40	4.9	27.4	76.5	15.3	14.7	53.0	-0.25	0.33	-0.054	0.92	143.1	93.5
%			3	1	1		25	5		15	2		15		40	25	5

- ET daughter out of our 8037 donor dam on page 8
- Flushmate to Lots 22, 23, 93
- Definitely a bright future!



Lot 106

106 | RFS MISS JADE J31

Rydeen Farms | **Black | Polled | PB SM | Open Heifer**
 BD: 2/25/21 | Tattoo: J31 | ASA#: 3933197 | Adj. BW: 87 | Adj. WW: 660

CCR WIDE RANGE 9005A
SIRE BCLR CASH FLOW C820
 BCLR MISS MONICA U820
 WS PROCLAMATION E202
DAM RFS MISS GENIE G82
 RFS MISS CHARLOTTE C39

	CE	BW	WW	YW	ADG	MCE	Milk	MWW	Stay	Doc	CW	YG	Marb	BF	REA	API	TI
EPD	13.9	1.1	101.1	155.6	0.34	6.7	15.1	65.6	20.5	14.1	44.6	-0.40	0.25	-0.065	1.19	161.4	96.1
%	15	40	2	2	4	35		35	10	20	10		25		5	10	3

- ET daughter out of our Proclamation donor G82
- Flushmate to Lots 45-49
- Great spread from birth to weaning



Lot 107

107 | RFS MISS JANELLE J67

Rydeen Farms | **Black | Homo Polled | PB SM | Open Heifer**
 BD: 3/2/21 | Tattoo: J67 | ASA#: 3933233 | Adj. BW: 87 | Adj. WW: 589

CDI MAINLINE 265D
SIRE LCDR IMPACT 134F
 WS MISS SUGAR C4
 HTP SVF IN DEW TIME
DAM W15
 RF SOLITA S35

	CE	BW	WW	YW	ADG	MCE	Milk	MWW	Stay	Doc	CW	YG	Marb	BF	REA	API	TI
EPD	12.3	2.3	92.3	143.9	0.32	6.8	27.1	73.2	14.6	14.8	47.3	-0.29	0.24	-0.059	0.95	140.8	89.5
%	30		10	10	10	30	25	10		15	5		25		35	30	15

- Maternal pedigree
- Granddam had 13 natural calves, 13 year old dam had 10 natural calves in our herd



Lot 108A



Hook's Eagle 6E - Sire of Lots 108A & 108B



Lot 108B

**PICK YOUR CHOICE
OF THE F41 X EAGLE OPEN HEIFERS
LOTS 108A-108B • BOTH WILL BE SOLD!**

108A | RFS MISS JENNIFER J7

Rydeen Farms | Black | Homo Polled | 3/4 SM 1/4 AN | Open Heifer
BD: 2/20/21 | Tattoo: J7 | ASA#: 3933173 | Adj. BW: 79

SIRE HOOK'S BLACK HAWK 50B
HOOK'S EAGLE 6E
HOOK'S CRYSTAL 1C
CLRS CONSTITUTION 311 C
DAM F41
Y2

108B | RFS MISS JUBILEE J19

Rydeen Farms | Black | Homo Polled | 3/4 SM 1/4 AN | Open Heifer
BD: 2/23/21 | Tattoo: J19 | ASA#: 3933185 | Adj. BW: 88 | Adj. WW: 667

SIRE HOOK'S BLACK HAWK 50B
HOOK'S EAGLE 6E
HOOK'S CRYSTAL 1C
CLRS CONSTITUTION 311 C
DAM F41
Y2

	CE	BW	WW	YW	ADG	MCE	Milk	MWW	Stay	Doc	CW	YG	Marb	BF	REA	API	TI
EPD	13.7	-0.6	87.3	140.4	0.33	8.3	16.2	59.8	20.3	16.6	41.7	-0.35	0.46	-0.066	0.98	170.6	95.3
%	35	35	15	10	10	25			5	10	20	20	25	25	10	4	4

- ET daughter out of our Constitution donor, F41
- Flushmate to Lots 50, 51, 52, 106B
- Show heifer prospect

	CE	BW	WW	YW	ADG	MCE	Milk	MWW	Stay	Doc	CW	YG	Marb	BF	REA	API	TI
EPD	13.7	-0.3	90.0	144.2	0.34	8.3	16.2	61.2	20.3	16.6	44.8	-0.35	0.46	-0.066	1.03	171.2	96.6
%	35	40	10	10	10	25		50	5	10	15	20	25	25	5	3	3

- ET daughter out of our Constitution donor F41
- Flushmate to Lots 50, 51, 52, 106A
- Exceptional EPD profile

Confidently choose the logoed group that matches your needs, then just pick the bulls you like:



ACCREDITED GENOMIC PLUS - For the majority of producers who simply need consistent and balanced genetic improvement, without genomic setbacks, G+ Accredited bulls should be on your list for premium purchase. These sires will absolutely move you forward for both cost reduction and income producing traits and substantially reduce risk when compared to all other evaluation programs. It's simple, the right genes are in these bulls to help secure a profitable future and the they have great EPDs to match!



ACCREDITED TERMINAL MATE - Just like an ATM machine makes it simpler to access your cash, the ATM Logo highlights bulls accredited to generate extra cash income as soon as your next calf crop! These bulls are meant specifically to use only on mature cows and for the purpose of adding performance, pay weight and end product value to market.



ACCREDITED CALVING EASE - Simply find bulls with the ACE logo for third party Accredited, secure Calving Ease bulls. Though we have had tools in the past to assist in choosing heifer bulls, we've never had one nearly this effective. The reduced risk that comes with this genomic certification will simply make your decisions easier and your heifer calving season more successful. Purchase special purpose ACE bulls with confidence. They will deliver consistent and predictable calving ease.



Lot 109A



LCDR Impact 134F - Sire of Lots 109A-109C



Lot 109B

PICK YOUR CHOICE
OF THE Z73 X IMPACT OPEN HEIFERS
 LOTS 109A-109C • ALL WILL BE SOLD!

109A | RFS MISS JAZZ J32

Rydeen Farms **Homo Black | Homo Polled | PB SM | Open Heifer**
 BD: 2/25/21 | Tattoo: J32 | ASA#: 3933198 | Adj. BW: 90 | Adj. WW: 650

CDI MAINLINE 265D
SIRE Lcdr Impact 134F
 WS MISS SUGAR C4
 TNT TANKER U263
DAM RFS MISS Z73
 RF MISS J69

	CE	BW	WW	YW	ADG	MCE	Milk	MWW	Stay	Doc	CW	YG	Marb	BF	REA	API	TI
EPD	8.3	4.0	105.8	166.9	0.38	5.6	28.0	80.9	13.8	15.3	61.5	-0.47	-0.02	-0.110	1.27	123.8	89.7
%			1	1	1		20	2		10	1	25		20	2		10

- ET daughter out of our Tanker donor, Z73 who has many progeny in the sale
- Top 1% performance-will create powerful females, brood daughters

109B | RFS MISS JUNE J55

Rydeen Farms **Homo Black | Homo Polled | PB SM | Open Heifer**
 BD: 2/28/21 | Tattoo: J55 | ASA#: 3933221 | Adj. BW: 92

CDI MAINLINE 265D
SIRE Lcdr Impact 134F
 WS MISS SUGAR C4
 TNT TANKER U263
DAM RFS MISS Z73
 RF MISS J69

	CE	BW	WW	YW	ADG	MCE	Milk	MWW	Stay	Doc	CW	YG	Marb	BF	REA	API	TI
EPD	8.4	4.0	105.7	166.9	0.38	5.6	28.0	80.8	13.8	15.3	62.6	-0.47	-0.02	-0.110	1.30	123.8	89.7
%			1	1	1		20	2		10	1	25		20	2		10

- ET daughter out of our Tanker donor, Z73 who has many progeny in the sale
- Very docile

109C | RFS MISS JULIE J23

Rydeen Farms **Homo Black | Homo Polled | PB SM | Open Heifer**
 BD: 2/23/21 | Tattoo: J23 | ASA#: 3933189 | Adj. BW: 90 | Adj. WW: 703

CDI MAINLINE 265D
SIRE Lcdr Impact 134F
 WS MISS SUGAR C4
 TNT TANKER U263
DAM RFS MISS Z73
 RF MISS J69

	CE	BW	WW	YW	ADG	MCE	Milk	MWW	Stay	Doc	CW	YG	Marb	BF	REA	API	TI
EPD	8.3	4.5	111.2	174.6	0.40	5.6	28.0	83.5	13.8	15.3	64.3	-0.47	-0.02	-0.110	1.31	125.0	92.3
%			1	1	1		20	1		10	1	25		20	2		10

- ET daughter out of our Tanker donor, Z73 who has many progeny in the sale
- Feminine yet robust phenotype



Lot 109C

OPEN HEIFERS

110 | RFS MISS JOLENE J142

Rydeen Farms | Red | Polled | PB SM | Open Heifer
 BD: 3/21/21 | Tattoo: J142 | ASA#: 3933309 | Adj. BW: 86

KBHR SNIPER E036
SIRE WS GADGET 40G
 WS EMOTION E127
 RFS T46
DAM RFS MISS Z120
 U8

	CE	BW	WW	YW	ADG	MCE	Milk	MWW	Stay	Doc	CW	YG	Marb	BF	REA	API	TI
EPD	12.4	2.2	84.8	133.6	0.31	7.1	28.1	70.5	17.1	17.4	43.0	-0.31	0.01	-0.082	0.77	130.9	79.7
%	30		25	20	15	25	20	15	45	2	10					50	45

- Really beautiful open heifer
- A crowd favorite
- The first Gadget females to sell



Lot 110

111 | RFS MISS JUPITER J194

Rydeen Farms | Red | Homo Polled | PB SM | Open Heifer
 BD: 4/10/21 | Tattoo: J194 | ASA#: 3933363 | Adj. BW: 87

KBHR SNIPER E036
SIRE WS GADGET 40G
 WS EMOTION E127
 ELLINGSON COMPLETE A358
DAM C170
 W80

	CE	BW	WW	YW	ADG	MCE	Milk	MWW	Stay	Doc	CW	YG	Marb	BF	REA	API	TI
EPD	12.9	3.2	85.5	142.4	0.29	8.2	28.0	75.7	17.2	16.1	41.9	-0.44	0.14	-0.100	1.01	140.9	88.5
%	25		5	10	20	15	20	10	45	10	15	40	45	35	25	30	15

- Super EPD profile
- Strong CE and performance
- 7 year old dam is doing a great job at Rydeen Farms



Lot 111

112 | RFS MISS JESS J172

Rydeen Farms | Red | Homo Polled | PB SM | Open Heifer
 BD: 4/2/21 | Tattoo: J172 | ASA#: 3933339 | Adj. BW: 86 | Adj. WW: 598

KBHR SNIPER E036
SIRE WS GADGET 40G
 WS EMOTION E127
 TNT 90 PROOF Z401
DAM D76
 Y25

	CE	BW	WW	YW	ADG	MCE	Milk	MWW	Stay	Doc	CW	YG	Marb	BF	REA	API	TI
EPD	14.4	1.0	88.5	132.0	0.27	8.0	23.9	68.2	16.5	16.3	39.5	-0.38	0.20	-0.079	0.97	145.3	87.9
%	10	40	15	20	30	15	50	25	50	5	15		30		30	20	15

- Top CE with solid performance numbers
- Sound carcass traits



Lot 112

113 | RFS MISS JAZMINE J80

Rydeen Farms | Red | Homo Polled | PB SM | Open Heifer
 BD: 3/3/21 | Tattoo: J80 | ASA#: 3933246 | Adj. BW: 89

KBHR SNIPER E036
SIRE WS GADGET 40G
 WS EMOTION E127
 KBHR KINGSMAN E144
DAM RFS MISS KINGSMAN G168
 DCR MS MOONSHINE D107

	CE	BW	WW	YW	ADG	MCE	Milk	MWW	Stay	Doc	CW	YG	Marb	BF	REA	API	TI
EPD	14.8	0.9	93.7	139.2	0.28	7.8	28.9	75.7	16.2	17.3	45.0	-0.41	0.23	-0.105	0.93	149.2	92.5
%	10	35	10	10	25	20	15	10		3	10		25	20	40	15	10

- Another really nice Gadget female
- Powerful brood leading her generation forward



Lot 113

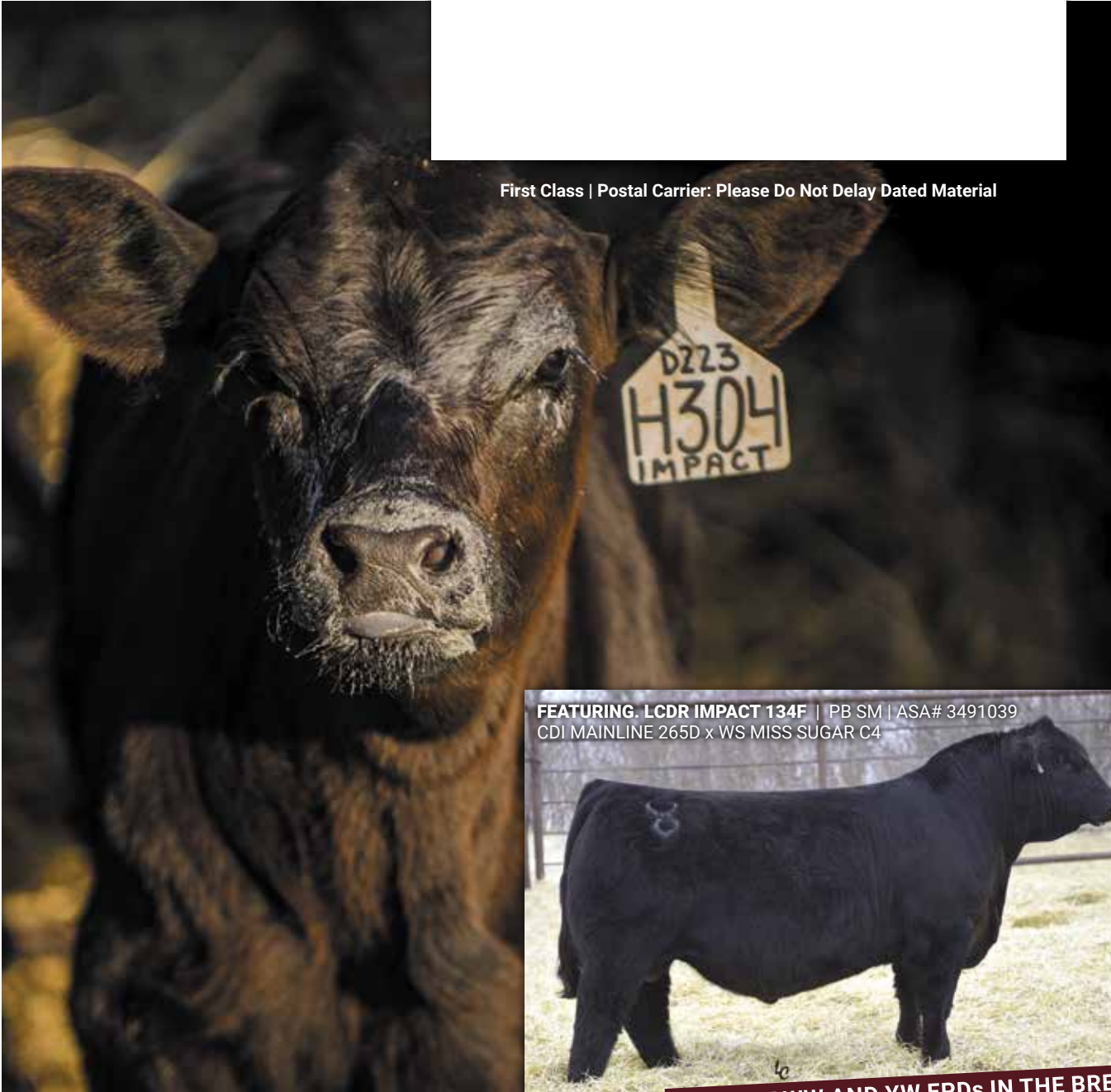
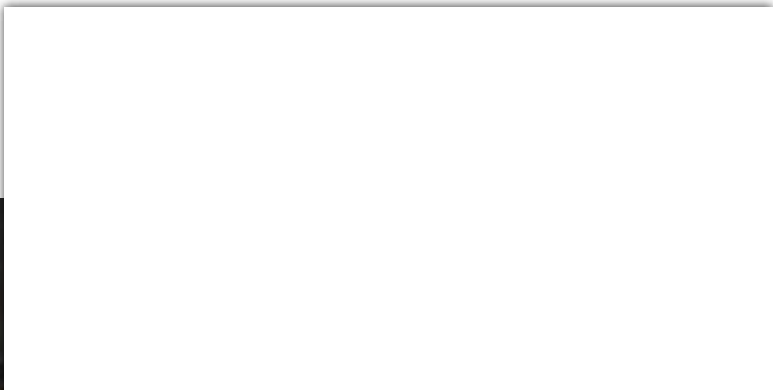
OPEN HEIFERS

Rydeen Farms

SINCE 1897

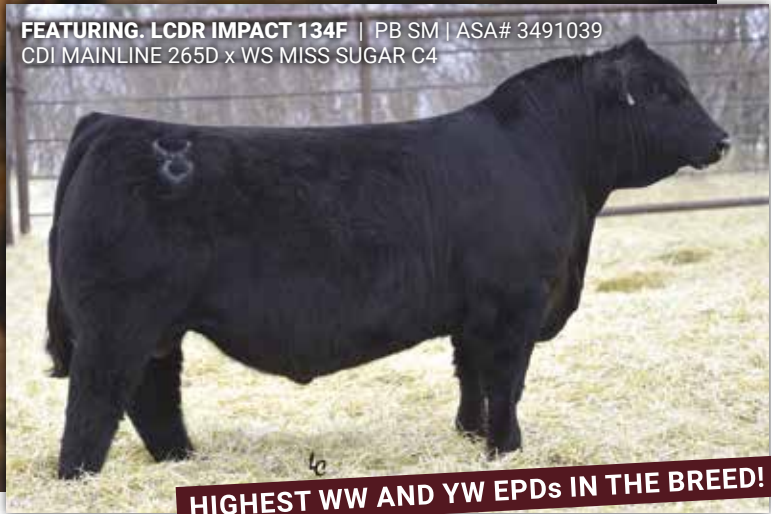
Polled Red & Black Simmental Cattle

47499 199th Ave
Clearbrook, MN 56634



First Class | Postal Carrier: Please Do Not Delay Dated Material

FEATURING. LCDR IMPACT 134F | PB SM | ASA# 3491039
CDI MAINLINE 265D x WS MISS SUGAR C4



HIGHEST WW AND YW EPDs IN THE BREED!

RYDEEN FARMS' 24th ANNUAL GENETICS WITH VISION SALE
SATURDAY, FEBRUARY 12, 2022 2:00 PM CST / CLEARBROOK, MN

SIMMENTAL & SIMANGUS BULLS & FEMALES

64 Black & Red Yearling Bulls / 14 Aged Bulls [18 months] / 29 Bred & 13 Open Females