

**SIMMENTAL + SIMANGUS
PERFORMANCE + PEACE OF MIND =**

Genetics with

VISION



SATURDAY, FEBRUARY 8, 2020 | CLEARBROOK, MN

68 YEARLING BULLS | 12 AGED BULLS [18 MONTHS] | 30 BRED & 10 OPEN FEMALES

RYDEEN FARMS

Dear Cattle Men and Women

Welcome to our 22nd Annual Genetics With Vision Bull and Female Sale and our 41st year of selling breeding livestock! We thank you for your continued interest and can't wait to see you at the farm on sale day!

Most of us were happy to close the door on 2019 due to challenges in agriculture from every angle. Mother Nature was particularly tough on producers and we have crop still standing in the fields like so many.

We've been disciplined in our breeding decisions and feel we are bringing our very best to you this year. We have bulls for cattlemen who sell their steers and heifers at a market. Most of the bulls offered have above average weaning and yearling performance combined with double digit calving ease. These bulls truly are your best choice on Angus based females. Heterosis is powerful in terms of production of pounds and fertility. A cross-bred calf has high buyer acceptance.

We have bulls for producers who sell butcher beef. For this reason, we have focused on carcass quality such as ribeye area and marbling. There are 22 bulls in the offering that are in the top 20% for ribeye and marbling.

Our goal is "Performance and Peace of Mind". We know that it takes focus, vision and discipline to apply the science and technology to breed cattle that are more than good. They need to be profitable. That is why we ultrasound, genomically enhance EPD's and parent verify the sale bulls. We collect actual weights, scrutinize phenotype and expect animals to perform even in the harsh, northern plains environment. This is our work; it is not our hobby.

You are invited to come and view the cattle and our operation prior to sale day. We thank you for your past support and your friendship. We know an investment in genetics is an important decision and we do not take it lightly. Please let us know if there is anything we can do to help you in your selection process.



The Rydeen Family
Chad, Claire, Lois, Paul, and Justis

Paul Rydeen

Paul Rydeen, Rydeen Farms

**VIEW CATALOG, LINKS TO VIDEOS, AND ULTRASOUND
DATA ONLINE AT WWW.RYDEENFARMS.COM**

ALLIED
GENETIC RESOURCES

ASA
The
PERFORMANCE
RECORDS

ASA Performance



RYDEEN FARMS 22ND ANNUAL PRODUCTION SALE

PERFORMANCE + PEACE OF MIND =
SIMMENTAL + SIMANGUS

Genetics with **VISION**

SATURDAY, FEBRUARY 8, 2020 | CLEARBROOK, MN

68 BLACK & RED YEARLING BULLS | 12 AGED BULLS [18 MONTHS] | 30 BRED & 10 OPEN FEMALES

Located ½ mile north of Clearbrook on #5; 3 miles east on #4 and ½ mile south on 199th Ave.

Terms and Conditions: This sale is conducted under the standard terms and conditions adopted by the American Simmental Association. If you have any questions, please contact us.

Registration Papers: Registration papers will be transferred on all animals. Please inform the clerk of your ASA number.

Feeding Arrangements: If you are unable to take your bull home on sale day, we will feed them for free until April 1, 2020. The bulls we feed will be put in with our bulls and treated the same. Successful buyers are responsible for animals purchased sale day and we are not responsible if an animal is injured after purchase. We encourage you to purchase mortality insurance. We will be semen testing bulls left here as able based on schedules. If you are interested in having your animal tested, please let us know.

Trucking: We will assist buyers in coordinating and making the most economical hauling arrangements.

Herd Health: We have completed 7 years of whole herd Johnes testing and all dams of sale cattle tested negative in 2019.

Spring 2019 born bulls were vaccinated at birth with Vision 8, InForce3, OncePMH, and given a probiotic gel. They were vaccinated in the spring with Vista Once, and InForce3. Prior to weaning they were given Vista Once, UltraBac8 (or Covexin8), and MultiMin. At weaning they were given Covexin and InForce3. In November they were given InForce3, Once subq., Valbazen and poured with Clean Up 2. They were repoured in December with Ivermectin.

Aged bulls were vaccinated in the early spring of 2019 with Vista Once, UltraBac 8 (or Covexin 8), given MultiMin and poured with Ivermectin. Early summer were given InForce3, OncePMH, and Long Range. In the fall of 2019, they were vaccinated with Once Subq, InForce3, UltraBac 8, MultiMin, Valbazen, and poured with Clean Up2. They were repoured in December with Ivermectin.

Bred heifers were vaccinated with UltraBac 8 and ViraShield 6L5, given MultiMin, and LongRange prior to breeding. The bred heifers were ultrasounded on 7/30/2019 and 10/11/2019 for pregnancy. In the fall of 2019 they were vaccinated with UltraBac 8, In Force 3, ScourBoss 9, Valbazen, and poured with Clean Up 2. Bred females are Bangs vaccinated and have had two doses of ScourBoss.

Open heifers were vaccinated with UltraBac 8, Inforce 3, OncePMH and given a probiotic gel. They were vaccinated in the spring with Vista Once, and InForce3. Prior to weaning they were given Vista Once, UltraBac8, and MultiMin. At weaning they were given Vista Once, InForce3, and poured with Clean Up 2. They are Bangs vaccinated.

Additional information: Ultrasound data will be available the day of the sale.

Semen Rights: We will retain 1/3 semen interest on all bulls sold in the sale unless specifically noted.

Livestock Insurance: Lindfors Insurance Agency will be available sale day, 218-435-6585.

Announcements: Announcements made sale day and from the auction block during the sale, take precedence over printed material in the catalog or other printed material associated with the sale. Anyone attending this sale attends at his or her own risk; we are not responsible for accidents, damages or stolen items.

SATURDAY, FEBRUARY 8, 2020

9:00 a.m.

Cattle available for viewing

12:00 p.m.

Complimentary Lunch at Noon
At Rydeen Farms, Clearbrook, Minnesota

2:00 p.m.

Sale Begins

SALE DAY PHONES

Farm. 218-776-3338

Paul cell. 218-280-1916

Lois cell. 218-280-8196

Claire cell. 218-280-0384

Justis cell. 218-280-2032

View catalog, links to videos, and
ultrasound data online at
www.rydeenfarms.com

AUCTIONEER

Tracy Harl, Wellington, CO
402-469-3852 cell

LODGING

Piper's Inn, Clearbrook, MN, 218-776-2323

SALE REPRESENTATIVES

Kirby Goettsch. 605-380-3939
Farm and Ranch Guide

Kelly Schmidt. 406-599-2395
Cattle Business Weekly

Marty Ropp. 406-581-7835
Allied Genetic Resources

Rocky Forseth. 406-590-7984
Allied Feeding Partners

Russ Danielson. 701-261-2742
American Simmental Association

Justin Dikoff. 605-290-0635
DVAuction

DVAuction
Broadcasting Real-Time Auctions

**SALE BROADCASTED ONLINE
THROUGH DVAUCTION.**
Bid online at www.dvauction.com or go to
page 25 for more information.



1 | **RFS FORTE F244**
RYDEEN FARMS | Red | Homo Polled | PB SM | Bull
 BD: 8/30/18 | Tattoo: F244 | ASA#: 3565362

SIRE: **RFS BULLETPROOF B42**
 GGPLD
 RFS MISS Z119
 CDI AUTHORITY 77X

DAM: **B62**
 U14

ACT BW	89
ADJ WW	808
ACT WT	1510
1/4/20	
FRAME SC	6.0
ACT SC	42.0

CE	BW	WW	YW	ADG	MCE	MILK	MWW	STAY	DOC	CW	YG	MARB	BF	REA	API	TI
9.5	2.2	82.2	125.3	0.27	5.8	29.1	70.2	18.8	13.3	43.4	-0.39	0.06	-0.087	0.98	134.1	78.7
			10	10	40	4	1	30	15	4	40	20	25	10		

- Awesome RFS Bulletproof son
- Deep sided, long bodied, dark cherry red PB
- Great disposition, #1 WW in fall program



3 | **RFS FANFARE F264**
RYDEEN FARMS | Hetero Black | Homo Polled | PB SM | Bull
 BD: 9/8/18 | Tattoo: F264 | ASA#: 3565382

SIRE: **WS ALL-AROUND Z35**
 GGPLD
 CDI MS HIGH ROLLER 39W
 DIKEMANS SURE BET

DAM: **D239**
 B73

ACT BW	86
ADJ WW	743
ACT WT	1475
1/4/20	
FRAME SC	6.0
ACT SC	41.0

CE	BW	WW	YW	ADG	MCE	MILK	MWW	STAY	DOC	CW	YG	MARB	BF	REA	API	TI
12.4	1.6	87.9	130.0	0.26	5.9	13.9	57.8	17.0	17.0	40.8	-0.42	0.16	-0.099	0.94	142.1	84.0
			20	2	15	40	40	2	10	20	25	10	2			

- Great performance out of a first calf heifer
- Fantastic phenotype

2 | **RFS FUTURE F253**
RYDEEN FARMS | Red | Hetero Polled | PB SM | Bull
 BD: 9/5/18 | Tattoo: F253 | ASA#: 3565371

SIRE: **CDI BIG TIME 297D**
 GGPLD
 CDI MS IRENE 1B
 THSF FREEDOM 300N

DAM: **RF SIRENA S1**
 RF MISS L41

ACT BW	89
ADJ WW	797
ACT WT	1455
1/4/20	
FRAME SC	6.0
ACT SC	39.0

CE	BW	WW	YW	ADG	MCE	MILK	MWW	STAY	DOC	CW	YG	MARB	BF	REA	API	TI
13.3	0.6	78.8	120.6	0.26	7.6	24.5	63.8	20.3	6.7	34.0	-0.44	0.13	-0.090	0.98	147.6	80.7
			15	25	15	15	25	10	10	25	25	20	5	5		

- Dam's raised 12 natural calves at Rydeen Farms
- Dam goes back to one of our foundation females, U95

4**RFS FULLBACK F246**

RYDEEN FARMS | Homo Black | Homo Polled | 3/4 SM 1/8 AN 1/8 CS | Bull
 BD: 9/1/18 | Tattoo: F246 | ASA#: 3565364

WS BEEF KING W107

SIRE WS ALL-AROUND Z35

CDI MS HIGH ROLLER 39W

J BAR J NIGHTRIDE 225Z

DAM D221

RFS MISS A238

ACT BW	87
ADJ WW	684
ACT WT	1505
1/4/20	
FRAME SC	6.0
ACT SC	38.0

EPD	CE	BW	WW	YW	ADG	MCE	MILK	MWW	STAY	DOC	CW	YG	MARB	BF	REA	API	TI
14.0	0.1	77.8	118.1	0.25	7.2	10.0	48.8	15.9	18.1	42.3	-0.31	0.28	-0.083	0.75	147.5	82.3	
%	25	40	10		25	35				1	10	30		15	30	10	5

- Excellent numbers in a 3/4 blood
- Heifer bull

5**RFS FRISCO F250**

RYDEEN FARMS | Homo Black | Homo Polled | PB SM | Bull
 BD: 9/4/18 | Tattoo: F250 | ASA#: 3565368

WS BEEF KING W107

SIRE WS ALL-AROUND Z35

CDI MS HIGH ROLLER 39W

HTP SVF IN DEW TIME

DAM D252

RF RABBIT

ACT BW	86
ADJ WW	757
ACT WT	1525
1/4/20	
FRAME SC	6.0
ACT SC	43.0

EPD	CE	BW	WW	YW	ADG	MCE	MILK	MWW	STAY	DOC	CW	YG	MARB	BF	REA	API	TI
11.3	1.4	82.5	120.6	0.24	4.8	17.3	58.5	18.7	9.2	37.0	-0.30	0.08	-0.094	0.58	137.2	78.6	
%	35		5		25			35	30		15		35			20	10

- Out of a first calf heifer
- Big weaning numbers
- Top 20% API and Top 10% TI

18 MONTH OLD BULLS**LOT 6****LOT 7****6****RFS FORTUNE F248**

RYDEEN FARMS | Homo Black | Homo Polled | 3/8 SM 5/8 AN | Bull
 BD: 9/1/18 | Tattoo: F248 | ASA#: 3565366

CONNEALY CONFIDENCE 0100

SIRE CONNEALY CONFIDENCE PLUS

ELBANNA OF CONANGA 1209

J BAR J NIGHTRIDE 225Z

DAM D238

W1

ACT BW	89
ADJ WW	701
ACT WT	1430
1/4/20	
FRAME SC	6.0
ACT SC	39.0

EPD	CE	BW	WW	YW	ADG	MCE	MILK	MWW	STAY	DOC	CW	YG	MARB	BF	REA	API	TI
14.2	-0.4	71.0	114.7	0.27	7.6	17.7	53.1	13.8	11.5	57.5	-0.14	0.52	0.013	1.14	139.7	79.1	
%	25	30	30		15	30					1	15			1	20	15

- 3/8 blood, heifer bull
- Excellent carcass quality
- Attractive bull with style

7**RFS FAMOUS F240**

RYDEEN FARMS | Homo Black | Homo Polled | 3/4 SM 1/4 AN | Bull
 BD: 8/28/18 | Tattoo: F240 | ASA#: 3565358

SVF ALLEGIANCE Y802

SIRE RFS CAPTAIN C21

W15

HART FINAL ANSWER 0048

DAM RFS MISS A240

Y121

ACT BW	87
ADJ WW	673
ACT WT	1475
1/4/20	
FRAME SC	6.0
ACT SC	39.0

EPD	CE	BW	WW	YW	ADG	MCE	MILK	MWW	STAY	DOC	CW	YG	MARB	BF	REA	API	TI
13.6	0.2	68.0	99.3	0.20	8.0	16.2	50.2	13.8	10.9	18.2	-0.16	0.26	-0.037	0.33	125.5	70.8	
%	30		40			25											

- Sire is a herd bull at Emmons Ranch, Olive, MT
- Great bull with balanced EPDs



LOT 8

8

RFS FRASIER F268

RYDEEN FARMS

Homo Black | Homo Polled | PB SM | Bull
BD: 9/10/18 | Tattoo: F268 | ASA#: 3565387

SIRE RFS CAPTAIN C21
GGPLD W15
DAM RFS MISS Z94
RF SEQUEL S159

ACT BW	95
ADJ WW	743
ACT WT	1450
1/4/20	
FRAME SC	6.0
ACT SC	42.0

CE	BW	WW	YW	ADG	MCE	MILK	MWW	STAY	DOC	CW	YG	MARB	BF	REA	API	TI
15.5	2.0	82.6	121.4	0.24	10.3	13.9	55.2	16.1	17.3	35.4	-0.43	-0.05	-0.101	0.90	130.1	75.6
EPD	%	3	5	25	2				1	20				35	35	20

- Excellent EPDs
- Out of one of Paul's favorite Tanker cows



LOT 10



LOT 9

9

RFS FOCUS F258

RYDEEN FARMS

Homo Black | Homo Polled | PB SM | Bull
BD: 9/7/18 | Tattoo: F258 | ASA#: 3565376

SIRE SVF ALLEGIANCE Y802
GGPLD DOUBLE R MISS 29G T18
DAM RFS MISS A203
RF MISS RAM P278

ACT BW	88
ADJ WW	801
ACT WT	1565
1/4/20	
FRAME SC	6.0
ACT SC	42.0

CE	BW	WW	YW	ADG	MCE	MILK	MWW	STAY	DOC	CW	YG	MARB	BF	REA	API	TI
13.7	0.6	75.7	111.3	0.22	7.6	16.6	54.4	9.7	11.9	52.0	-0.33	0.14	-0.091	0.87	124.8	77.5
EPD	%	10	25	20	40	15			30	1	20			40		15

- 2ND highest WWT in the fall program
- Low birthweight
- Dam is a nice uddered Dual Focus cow

10

RFS FLEET F262

RYDEEN FARMS

Homo Black | Homo Polled | PB SM | Bull
BD: 9/7/18 | Tattoo: F262 | ASA#: 3565380

SIRE SVF ALLEGIANCE Y802
GGPLD DOUBLE R MISS 29G T18
DAM RFS MISS A202
RF MISS RAM P281

ACT BW	91
ADJ WW	724
ACT WT	1555
1/4/20	
FRAME SC	6.0
ACT SC	41.0

CE	BW	WW	YW	ADG	MCE	MILK	MWW	STAY	DOC	CW	YG	MARB	BF	REA	API	TI
10.2	2.4	76.7	114.2	0.23	4.4	19.3	57.6	13.8	10.8	48.7	-0.44	-0.09	-0.118	0.96	113.8	70.5
EPD	%	20	35	40					1	20				20		

- Great phenotype
- Would work well on Angus based cows

11**RFS FILMORE F243****RYDEEN FARMS**Homo Black | Homo Polled | 3/4 SM 1/4 AN | Bull
BD: 8/29/18 | Tattoo: F243 | ASA#: 3565361

J BAR J NIGHTRIDE 225Z

SIRE CLRS CONSTITUTION 311 C

CLRS AID XCELLENCE 311 A

KBHR Y068 HARLEY

DAM RFS MISS BERIT B246

RF PANDORA

ACT BW	90
ADJ WW	692
ACT WT	1590
FRAME SC	6.0
ACT SC	41.0

CE	BW	WW	YW	ADG	MCE	MILK	MWW	STAY	DOC	CW	YG	MARB	BF	REA	API	TI	
EPD	12.6	2.6	76.9	125.6	0.30	5.4	13.0	51.3	17.9	16.2	60.3	-0.37	0.24	-0.116	0.92	144.4	78.7
%	40		10		4				25	4	1	15		3	10	15	15

- Growthy 3/4 blood
- Top 15% API and TI

12**RFS FRAZEE F263****RYDEEN FARMS**Homo Black | Homo Polled | 3/4 SM 1/4 AN | Bull
BD: 9/8/18 | Tattoo: F263 | ASA#: 3565381

J BAR J NIGHTRIDE 225Z

SIRE CLRS CONSTITUTION 311 C

CLRS AID XCELLENCE 311 A

KBHR Y068 HARLEY

DAM RFS MISS BLOSSOM B244

Y116

ACT BW	90
ADJ WW	718
ACT WT	1500
FRAME SC	6.0
ACT SC	40.0

CE	BW	WW	YW	ADG	MCE	MILK	MWW	STAY	DOC	CW	YG	MARB	BF	REA	API	TI	
EPD	11.5	2.0	71.7	121.0	0.31	4.0	19.5	55.2	16.0	16.6	52.7	-0.34	0.15	-0.099	0.84	133.7	74.5
%			25		3					3	2	25		10	15	30	30

- Moderate frame
- Good weaning and yearling numbers

18 MONTH OLD BULLS

**WS PROCLAMATION E202****Homozygous Polled | Homozygous Black**

Our biggest sire group and are they nice! Standout phenotype with numbers to boot, this group has it all in a purebred, 3/4, or percentage package. We were contending bidder on this phenomenal herd sire and used him heavily in our AI program.

**13****RFS GENTRY G8****RYDEEN FARMS**Homo Black | Homo Polled | PB SM | Bull
BD: 2/26/19 | Tattoo: G8 | ASA#: 3595821

CCR COWBOY CUT 5048Z

SIRE WS PROCLAMATION E202

WS MISS SUGAR C4

CLRS CONSTITUTION 311 C

DAM E119

C31

ACT BW	80
ADJ WW	688
ADJ YW	1268
FRAME SC	5.8
ADG	3.6
WDA	3.3
ADJ SC	40.9

CE	BW	WW	YW	ADG	MCE	MILK	MWW	STAY	DOC	CW	YG	MARB	BF	REA	API	TI	
EPD	14.8	1.4	89.5	143.0	0.33	9.5	29.4	74.1	18.8	15.8	50.3	-0.37	0.36	-0.087	0.99	162.6	92.5
%	5		1	1	1	3	4	1	30	3	1		2	20	1	1	

- Out of a Constitution first calf heifer
- Top 1% API and TI
- Breeder quality

14**RFS GAGE G15****RYDEEN FARMS**Hetero Black | Homo Polled | 3/4 SM 1/4 AN | Bull
BD: 3/1/19 | Tattoo: G15 | ASA#: 3595828

CCR COWBOY CUT 5048Z

SIRE WS PROCLAMATION E202

WS MISS SUGAR C4

CLRS CONSTITUTION 311 C

DAM E3

RFS MISS CHARLOTTE C39

ACT BW	80
ADJ WW	721
ADJ YW	1329
FRAME SC	6.0
ADG	3.8
WDA	3.5
ADJ SC	42.6

CE	BW	WW	YW	ADG	MCE	MILK	MWW	STAY	DOC	CW	YG	MARB	BF	REA	API	TI	
EPD	17.1	0.7	85.3	137.4	0.33	10.0	24.7	67.3	20.3	17.9	55.7	-0.28	0.46	-0.058	1.00	173.3	92.8
%	10		2	1	1	10	25	3	5	2	1	40	20	40	4	1	1

- Out of a Constitution first calf heifer
- Great birth to yearling ratios
- Weaned at 721, large scrotal
- Highest CE, API and TI of the Proclamation group

Performance & Peace of Mind

PEACE OF MIND – we focus on the Calving Ease Direct (CE) EPD because it all starts with a live calf that does not require assistance.



LOT 16



LOT 17

17 | RFS GANGBUSTER G51

RYDEEN FARMS | Homo Black | Homo Polled | 3/4 SM 1/4 AN | Bull
BD: 3/13/19 | Tattoo: G51 | ASA#: 3595865

SIRE	CCR COWBOY CUT 5048Z	ACT BW	96
	WS PROCLAMATION E202	ADJ WW	859
GGPLD	WS MISS SUGAR C4	ADJ YW	1447
	HART FINAL ANSWER 0048	FRAME SC	6.0
DAM	C70	ADG	3.7
	RFS MISS ASTRID A112	WDA	4.1
		ADJ SC	42.7

CE	BW	WW	YW	ADG	MCE	MILK	MWW	STAY	DOC	CW	YG	MARB	BF	REA	API	TI
12.7	1.7	87.8	138.4	0.32	8.3	34.0	77.8	22.1	9.7	65.1	-0.21	0.34	-0.062	0.89	152.7	85.5
%	40	1	1	2	20	1	1	1	1	1	40	30	10	5	2	2

- 3/4 blood, big scrotal
- Weaned at 859
- 3RD highest WW, 2ND highest YW in his large contemporary group
- Ratios 117 WW, 116 YW

15 | RFS GALLANT G27

RYDEEN FARMS | Homo Black | Homo Polled | PB SM | Bull
BD: 3/4/19 | Tattoo: G27 | ASA#: 3595841

SIRE	CCR COWBOY CUT 5048Z	ACT BW	85
	WS PROCLAMATION E202	ADJ WW	661
GGPLD	WS MISS SUGAR C4	ADJ YW	1206
	HART 003B	FRAME SC	6.0
DAM	E96	ADG	3.4
	C28	WDA	3.1
		ADJ SC	42.3

CE	BW	WW	YW	ADG	MCE	MILK	MWW	STAY	DOC	CW	YG	MARB	BF	REA	API	TI
15.8	1.5	84.0	123.7	0.25	10.4	19.3	61.3	19.2	11.2	38.9	-0.36	0.16	-0.082	0.87	149.0	82.5
%	3	4	10	20	2	20	25	40	10	20	20	40	4	3	3	3

- Purebred
- Out of a first calf heifer
- Large scrotal

16 | RFS GEMINI G38

RYDEEN FARMS | Homo Black | Homo Polled | 5/8 SM 3/8 AN | Bull
BD: 3/8/19 | Tattoo: G38 | ASA#: 3595852

SIRE	CCR COWBOY CUT 5048Z	ACT BW	90
	WS PROCLAMATION E202	ADJ WW	686
GGPLD	WS MISS SUGAR C4	ADJ YW	1215
	CONNELLY IN SURE 8524	FRAME SC	6.0
DAM	D118	ADG	3.4
	B77	WDA	3.4
		ADJ SC	41.5

CE	BW	WW	YW	ADG	MCE	MILK	MWW	STAY	DOC	CW	YG	MARB	BF	REA	API	TI
15.0	-0.3	73.8	114.6	0.25	8.6	32.5	69.3	19.2	15.8	41.6	-0.19	0.57	-0.033	0.75	160.1	85.3
%	15	35	20	20	25	20	1	2	10	5	15	10		30	2	2

- 5/8 blood
- Out of a first calf heifer
- Dam's an exceptional Connealy In Sure female



LOT 18

18 | RFS GENE G71

RYDEEN FARMS | Homo Black | Homo Polled | PB SM | Bull
BD: 3/16/19 | Tattoo: G71 | ASA#: 3595886

SIRE	CCR COWBOY CUT 5048Z	ACT BW	89
	WS PROCLAMATION E202	ADJ WW	704
GGPLD	WS MISS SUGAR C4	ADJ YW	1312
	TNT DUAL FOCUS T249	FRAME SC	6.0
DAM	D91	ADG	3.8
	BRANT AMELIA A52	WDA	3.6
		ADJ SC	41.9

CE	BW	WW	YW	ADG	MCE	MILK	MWW	STAY	DOC	CW	YG	MARB	BF	REA	API	TI
13.7	0.8	78.4	120.1	0.26	8.2	26.1	65.2	16.8	14.1	46.3	-0.39	0.30	-0.094	0.97	149.6	84.4
%	10	30	15	10	15	10	15	10	10	2	5			20	4	2

- Top 4 % API and top 2% TI
- Excellent marbling in a purebred

19

RFS GARRISON G90

RYDEEN FARMS

Homo Black | Homo Polled | PB SM | Bull
BD: 3/17/19 | Tattoo: G90 | ASA#: 3595905

CCR COWBOY CUT 5048Z

SIRE WS PROCLAMATION E202

WS MISS SUGAR C4

MCM TOP GRADE 018X

DAM C91

RFS MISS Z10

ACT BW	89
ADJ WW	753
ADJ YW	1221
FRAME SC	6.0
ADG	2.9
WDA	3.4
ADJ SC	42.0

EPD	CE	BW	WW	YW	ADG	MCE	MILK	MWW	STAY	DOC	CW	YG	MARB	BF	REA	API	TI
	11.3	0.8	80.6	122.1	0.26	8.0	31.1	71.3	22.0	14.4	39.5	-0.34	0.16	-0.079	0.84	149.5	82.0
%	35	30	10	10	15	10	2	1	2	10	10		20			4	4

- Large scrotal purebred
- Weaned at 753
- Dam is a great young cow with awesome maternal numbers



LOT 19

20

RFS GULLY G92

RYDEEN FARMS

Homo Black | Hetero Polled | PB SM | Bull
BD: 3/17/19 | Tattoo: G92 | ASA#: 3595907

CCR COWBOY CUT 5048Z

SIRE WS PROCLAMATION E202

WS MISS SUGAR C4

W/C UNITED 956Y

DAM B39

U184

ACT BW	90
ADJ WW	767
ADJ YW	1258
FRAME SC	6.0
ADG	3.1
WDA	3.6
ADJ SC	41.0

EPD	CE	BW	WW	YW	ADG	MCE	MILK	MWW	STAY	DOC	CW	YG	MARB	BF	REA	API	TI
	15.2	1.2	82.5	126.1	0.27	9.8	24.7	65.8	16.9	11.1	35.0	-0.35	0.15	-0.078	0.80	144.4	82.6
%	4	40	5	4	10	2	25	5			25		20			10	3

- Purebred with calving ease
- Weaned at 767
- Ratios 105 WW, 101 YW

21

RFS GILMAN G95

RYDEEN FARMS

Hetero Black | Homo Polled | 3/4 SM 1/4 AN | Bull
BD: 3/17/19 | Tattoo: G95 | ASA#: 3595910

CCR COWBOY CUT 5048Z

SIRE WS PROCLAMATION E202

WS MISS SUGAR C4

HART FINAL ANSWER 0048

DAM C65

RFS MISS ACORN A184

ACT BW	90
ADJ WW	778
ADJ YW	1297
FRAME SC	6.0
ADG	3.3
WDA	3.7
ADJ SC	44.5

EPD	CE	BW	WW	YW	ADG	MCE	MILK	MWW	STAY	DOC	CW	YG	MARB	BF	REA	API	TI
	12.6	2.3	84.9	131.5	0.29	9.3	26.7	69.1	19.4	13.2	44.8	-0.24	0.26	-0.059	0.75	140.6	80.5
%	40		2	3	10	10	15	2	10	25	10			40	30	20	10

- Weaned at 778
- Ratios 106 WW, 104 YW
- Large scrotal

22

RFS GUSTAV G108

RYDEEN FARMS

Homo Black | Homo Polled | 3/4 SM 1/4 AN | Bull
BD: 3/18/19 | Tattoo: G108 | ASA#: 3595923

CCR COWBOY CUT 5048Z

SIRE WS PROCLAMATION E202

WS MISS SUGAR C4

CONNELLY IRISH 0204

DAM C6

RFS MISS ALLEGIANCE A17

ACT BW	89
ADJ WW	831
ADJ YW	1354
FRAME SC	6.0
ADG	3.3
WDA	3.8
ADJ SC	44.5

EPD	CE	BW	WW	YW	ADG	MCE	MILK	MWW	STAY	DOC	CW	YG	MARB	BF	REA	API	TI
	15.6	0.7	77.2	119.3	0.26	11.3	33.1	71.6	18.1	17.3	49.5	-0.38	0.34	-0.066	1.18	146.6	81.4
%	15		10	10	20	2	1	1	20	2	3	15	40	30	1	10	10

- Heifer bull out of a Conneally Irish dam
- Weaned at 831
- Ratios 113 WW, 109 YW
- Top 1 % REA

23

RFS GARFIELD G134

RYDEEN FARMS

Homo Black | Polled | 3/4 SM 1/4 AN | Bull
BD: 3/21/19 | Tattoo: G134 | ASA#: 3595949

CCR COWBOY CUT 5048Z

SIRE WS PROCLAMATION E202

WS MISS SUGAR C4

W R BAR IN FOCUS 730

DAM W185

RFS MISS T75

ACT BW	98
ADJ WW	743
ADJ YW	1253
FRAME SC	6.0
ADG	3.2
WDA	3.6
ADJ SC	42.2

EPD	CE	BW	WW	YW	ADG	MCE	MILK	MWW	STAY	DOC	CW	YG	MARB	BF	REA	API	TI
	10.6	1.3	76.4	116.9	0.25	7.2	28.3	66.4	15.4	15.2	48.7	-0.25	0.25	-0.058	0.85	127.2	75.9
%			15	15	25	35	10	4		10	3			40	15		25

- Weaned at 743
- Dam has had 9 natural calves with a 365 day interval
- Ratios 101 WW, 101 YW

24

RFS GILBERT G139

RYDEEN FARMS

Homo Black | Homo Polled | PB SM | Bull
BD: 3/22/19 | Tattoo: G139 | ASA#: 3595954

CCR COWBOY CUT 5048Z

SIRE WS PROCLAMATION E202

WS MISS SUGAR C4

HOOKS SHEAR FORCE 38K

DAM RFS MISS Z93

U64

ACT BW	90
ADJ WW	783
ADJ YW	1175
FRAME SC	6.0
ADG	2.5
WDA	3.4
ADJ SC	39.2

EPD	CE	BW	WW	YW	ADG	MCE	MILK	MWW	STAY	DOC	CW	YG	MARB	BF	REA	API	TI
	12.0	1.3	80.7	116.5	0.22	8.0	25.1	65.3	16.3	7.9	39.6	-0.42	0.22	-0.064	1.19	140.5	82.4
%	25	40	10	15	40	10	20	10			10		10		2	15	3

- Weaned at 783
- Dam has had 6 natural calves with a 368 day interval with great ratios for WW, YW
- Dam is the nicest Shear Force cow we have with great feet and udder

Performance & Peace of Mind

PEACE OF MIND – leave your trailer at home. We will keep your bulls, grow them out, and semen test them before delivery.

YEARLING BULLS

KBHR HIGH ROAD E283

Homozygous Polled | Homozygous Black

We needed a calving ease bull with performance. High Road fit the bill for us. He's a Beacon son with a bit more frame and performance.



YEARLING BULLS

25 | RFS GALAXY G121

RYDEEN FARMS

Homo Black | Homo Polled | 3/4 SM 1/4 AN | Bull
BD: 3/20/19 | Tattoo: G121 | ASA#: 3595936

HOOK'S BEACON 56B

SIRE **KBHR HIGH ROAD E283**



WS MISS SUGAR C4

W/C UNITED 956Y

DAM **B33**

BRANT NUTMEG Y546R

ACT BW	88
ADJ WW	765
ADJ YW	1439
FRAME SC	6.0
ADG	4.2
WDA	4.0
ADJ SC	42.1

	CE	BW	WW	YW	ADG	MCE	MILK	MWW	STAY	DOC	CW	YG	MARB	BF	REA	API	TI
EPD	10.9	1.0	92.8	150.5	0.36	7.2	19.6	66.0	10.7	14.5	61.0	-0.31	0.39	-0.043	1.29	135.3	89.9
%			1	1	1	35		4		15	1	30	35		1	25	1

- Weaned at 765
- Big weaning and yearling numbers gaining 4-4.2#/day
- Ratios 102 BW, 104 WW, 116 YW

26 | RFS GEORGE G91

RYDEEN FARMS

Homo Black | Homo Polled | PB SM | Bull
BD: 3/17/19 | Tattoo: G91 | ASA#: 3595906

HOOK'S BEACON 56B

SIRE **KBHR HIGH ROAD E283**



WS MISS SUGAR C4

KBHR Y068 HARLEY

DAM **C92**

Y141

ACT BW	92
ADJ WW	712
ADJ YW	1288
FRAME SC	6.0
ADG	3.6
WDA	3.5
ADJ SC	41.0

	CE	BW	WW	YW	ADG	MCE	MILK	MWW	STAY	DOC	CW	YG	MARB	BF	REA	API	TI	
EPD	13.2	2.2	81.5	128.6	0.29	5.2	27.8	68.5	21.4	14.8	40.7	-0.41	0.20	-0.069	1.13	152.2	82.5	
%			15	10	3	4		10	2	4	10	10		15		4	3	3

- Great carcass quality
- Performance pedigree

27 | RFS GAYLORD G123

RYDEEN FARMS

Homo Black | Homo Polled | 3/4 SM 1/4 AN | Bull
BD: 3/20/19 | Tattoo: G123 | ASA#: 3595938

HOOK'S BEACON 56B

SIRE **KBHR HIGH ROAD E283**



WS MISS SUGAR C4

LEMAR DAKOTA GOLD 18T

DAM **Y57**

W36

ACT BW	89
ADJ WW	631
ADJ YW	1145
FRAME SC	6.0
ADG	3.2
WDA	3.3
ADJ SC	39.1

	CE	BW	WW	YW	ADG	MCE	MILK	MWW	STAY	DOC	CW	YG	MARB	BF	REA	API	TI
EPD	12.0	-0.1	73.2	110.4	0.23	8.0	20.1	56.6	17.8	12.0	23.1	-0.29	0.52	-0.031	0.85	150.2	82.0
%			35	20	25	40	25	40	25	40		35	15		15	10	5

- Dam has had 7 natural calves with a 367 day interval
- Dam is a favorite 1/2 blood at Rydeen Farms
- Top 10% API and top 5% TI



28**RFS GORDON G125**

RYDEEN FARMS

Homo Black | Homo Polled | PB SM | Bull
BD: 3/20/19 | Tattoo: G125 | ASA#: 3595940SIRE **KBHR HIGH ROAD E283**

WS MISS SUGAR C4

TNT TANKER U263

DAM **RFS MISS ARTIST A21**

U64



ACT BW	92
ADJ WW	743
ADJ YW	1342
FRAME SC	6.0
ADG	3.8
WDA	3.8
ADJ SC	40.1

	CE	BW	WW	YW	ADG	MCE	MILK	MWW	STAY	DOC	CW	YG	MARB	BF	REA	API	TI
EPD	8.8	1.7	84.9	132.5	0.30	7.2	27.0	69.4	18.6	11.1	50.3	-0.55	0.31	-0.096	1.48	150.0	87.9
%			3	2	2	20	10	2	35		1	10	4		1	4	1

- Outstanding numbers
- Out of a great Tanker cow
- Ratios 101 WW, 108 YW
- Top 1% TI and REA

**LOT 28****29****RFS GIL G137**

RYDEEN FARMS

Homo Black | Homo Polled | PB SM | Bull
BD: 3/21/19 | Tattoo: G137 | ASA#: 3595952SIRE **KBHR HIGH ROAD E283**

WS MISS SUGAR C4

HALE BLACK DIAMOND P192

DAM **Y62**

U65



ACT BW	84
ADJ WW	715
ADJ YW	1218
FRAME SC	6.0
ADG	3.1
WDA	3.4
ADJ SC	41.2

	CE	BW	WW	YW	ADG	MCE	MILK	MWW	STAY	DOC	CW	YG	MARB	BF	REA	API	TI
EPD	12.9	0.3	74.5	112.2	0.24	8.0	29.0	66.2	18.7	14.1	32.5	-0.53	0.19	-0.092	1.23	146.0	80.6
%	15	20	25	25	25	10	5	5	30	10	35	20	15		1	10	5

- Low birth weight
- Dam has had 7 natural calves with a 364 day calving interval
- Excellent EPD profile

30**RFS GOALIE G170**

RYDEEN FARMS

Homo Black | Homo Polled | 3/4 SM 1/4 AN | Bull
BD: 3/27/19 | Tattoo: G170 | ASA#: 3595984SIRE **KBHR HIGH ROAD E283**

WS MISS SUGAR C4

ELLINGSON RIGHT ON W944

DAM **RFS MISS Z78**

PAR JUDGES HEROINE



ACT BW	91
ADJ WW	852
ADJ YW	1376
FRAME SC	6.0
ADG	3.3
WDA	4.0
ADJ SC	42.5

	CE	BW	WW	YW	ADG	MCE	MILK	MWW	STAY	DOC	CW	YG	MARB	BF	REA	API	TI
EPD	11.3	1.1	84.2	131.9	0.30	8.1	28.5	70.5	15.3	12.2	33.9	-0.40	0.44	-0.058	1.10	143.6	86.8
%			3	2	4	25	10	2		40	35	10	25	40	1	15	2

- Great numbers
- Weaned at 852
- Ratios 116 WW, 111 YW
- Large scrotal

YEARLING BULLS

UNDERSTANDING EPDS

Expected Progeny Differences (EPDs): EPDs are the most accurate and effective tool available for comparing genetic levels. In using EPDs, the difference between two sires' EPDs represents the unit difference expected in the performance of their progeny. For example, if sires A and B have EPDs of +10 and -5, a 15-unit difference would be expected in their progeny (moving from -5 to +10 yields 15 units). Key to using EPDs is knowing in what units they are expressed. For example, if the above case referred to weaning weight EPDs, sire A would be expected to sire 15 pounds more weaning weight than sire B. If calving ease was the trait, sire A would be expected to sire 15 percent more unassisted births in first-calf heifers; in other words, if sire B sired 30 assists in a group of 100 heifers, we would expect sire A to require 15 assists. A percentile-ranking chart is required to determine where a bull's EPDs rank him relative to other bulls in the breed. For more detailed information about EPDs and \$ indexes, visit www.simmental.org. Listed below are the units in which ASA EPDs are expressed:

- Calving Ease (CE):** Percent of unassisted births when used on heifers.
- Birth Weight (BW):** Pounds of birth weight.
- Weaning Weight (WW):** Pounds of weaning weight.
- Yearling Weight (YW):** Pounds of yearling weight.
- Maternal Calving Ease (MCE):** Percent of unassisted births in first-calving daughters.
- Milk (MLK):** Pounds of weaning weight due to milk.
- Maternal Weaning Weight (MWW):** Pounds of weaning weight due to milk and growth.
- Stayability (STAY):** Percent of daughters remaining in the cowherd at six years of age.
- Docility (DOC):** Percent of offspring receiving a disposition score of 1 (docile).
- Carcass Weight (CW):** Pounds of carcass weight at 475 days.
- Yield Grade (YG):** Carcass yield grade score at 475 days.
- Marbling (Marb):** Carcass marbling score at 475 days.

- Back Fat (BF):** Inches of carcass back fat at 475 days.
- Ribeye Area (REA):** Square inches of carcass ribeye at 475 days.
- Warner-Bratzler Shear Force (WBSF):** Pounds of force required to shear a rib-eye steak.
- All-Purpose Index (API):** Dollars per cow exposed under an all-purpose-sire scenario. (See \$ Indexes for more details.)
- Terminal Index (TI):** Dollars per cow exposed under a terminal-sire scenario. (See TI for more details.)
- \$ Indexes:** Though EPDs allow for the comparison of genetic levels for many economically important traits, they only provide pieces of the economic puzzle. This is where \$ indexes come in. Through well-conceived, rigorous mathematical computation, \$ indexes blend EPDs and economics to estimate an animal's overall impact on integrated commercial production. The same technology that led to the dramatic progress in swine, poultry and dairy genetics over the last several decades was used to develop the following \$ indexes:
- All-Purpose Index (API):** Evaluates sires for use on the entire cow herd (bred to both Angus first-calf heifers and mature cows) with the portion of their daughters required to maintain herd size retained and the remaining heifers and steers put on feed and sold grade and yield.
- Terminal Index (TI):** Evaluates sires for use on mature Angus cows with all offspring put on feed and sold grade and yield.
- Using API and TI:** First, determine which index to use; if you are keeping replacements use API, if not, use TI. Then, just as with EPDs, zero in on the unit difference between bulls. (As described above, index units are in dollars per cow exposed.) The difference can be used to determine how much a bull is worth compared to another. Put another way, how much you can pay for one bull compared to another. For example, when buying an all-purpose-type sire, you can quickly figure a bull scoring +100 for API is worth an extra \$6,000 over a +50 bull if both are exposed to 30 cows over 4 years (\$50 diff. x 30 hd. x 4 yr. = \$6,000). A percentile-ranking chart is required to determine where a bull's index value ranks him relative to other bulls in the breed. For more detailed information about EPDs and \$ indexes, visit: www.simmental.org



LOT 31



ES D-LUXE DB21



LOT 32

ES D-LUXE DB21

Homozygous Polled | Heterozygous Black

This SimAngus sire was purchased in 2017 from Eichackers in South Dakota. We think he has gotten better and better each year. A heterozygous black sire with a perfect phenotype; we used him on blacks and reds alike. His progeny are attractive, "heads up" type cattle.

31 | RFS GENESIS G193

RYDEEN FARMS | Homo Black | Homo Polled | 3/4 SM 1/4 AN | Bull
BD: 4/6/19 | Tattoo: G193 | ASA#: 3596007

W/C LOCK DOWN 206Z

SIRE ES D-LUXE DB21



ES B21

MCM TOP GRADE 018X

DAM C97

RF SAMARA S85

ACT BW	85
ADJ WW	768
ADJ YW	1397
FRAME SC	6.0
ADG	4.0
WDA	3.9
ADJ SC	39.0

	CE	BW	WW	YW	ADG	MCE	MILK	MWW	STAY	DOC	CW	YG	MARB	BF	REA	API	TI
EPD	12.2	-0.3	71.4	116.6	0.28	7.5	33.1	68.7	18.8	8.4	56.7	-0.30	0.51	-0.090	0.86	153.1	82.8
%	35	25	15	10	30	1	2	15		1	35	15	15	15	5	4	

- Great EPDs and ratios 103 BW, 105 WW, 112 YW
- Weaned at 768 gaining at 4#/day

32 | RFS GUIDE G189

RYDEEN FARMS | Hetero Black | Homo Polled | 3/4 SM 3/16 AN 1/16 AR | Bull
BD: 4/5/19 | Tattoo: G189 | ASA#: 3596003

W/C LOCK DOWN 206Z

SIRE ES D-LUXE DB21



ES B21

ELLINGSON LEGACY M229

DAM Y42

RF EFFIE H83

ACT BW	87
ADJ WW	816
ADJ YW	1274
FRAME SC	6.0
ADG	2.9
WDA	3.7
ADJ SC	39.0

	CE	BW	WW	YW	ADG	MCE	MILK	MWW	STAY	DOC	CW	YG	MARB	BF	REA	API	TI
EPD	14.3	-0.7	71.5	113.0	0.26	8.5	25.3	61.0	19.2	11.8	49.1	-0.41	0.11	-0.103	1.00	135.1	73.1
%	20	25	25	20	20	20	25	15	10		3	10		4	4	30	35

- Great EPDs and ratios 103 BW, 111 WW, 102 YW
- Weaned at 816
- Dam has had 8 natural calves with a 366 day interval with great ratios

33 | RFS GRAHAM G79

RYDEEN FARMS | Hetero Black | Homo Polled | 1/2 SM 7/16 AN 1/16 AR | Bull
BD: 3/16/19 | Tattoo: G79 | ASA#: 3595894

W/C LOCK DOWN 206Z

SIRE ES D-LUXE DB21



ES B21

TNT DUAL FOCUS T249

DAM D17

B31

ACT BW	84
ADJ WW	705
ADJ YW	1193
FRAME SC	6.0
ADG	3.1
WDA	3.3
ADJ SC	38.9

	CE	BW	WW	YW	ADG	MCE	MILK	MWW	STAY	DOC	CW	YG	MARB	BF	REA	API	TI
EPD	16.1	0.2	78.1	122.1	0.28	9.4	22.9	61.9	14.1	12.5	42.8	-0.11	0.32	-0.010	0.70	138.4	79.9
%	10		10	10	10	10	40	15		35	10				35	20	10

- 1/2 blood
- Calving ease heifer bull
- Top 10% CE, WW, YW, ADG, MCE, CW and TI



LOT 33

34

RFS GRANDIN G128

RYDEEN FARMS | Homo Black | Homo Polled | 3/4 SM 3/16 AN 1/16 AR | Bull
BD: 3/20/19 | Tattoo: G128 | ASA#: 3595943

W/C LOCK DOWN 206Z

SIRE ES D-LUXE DB21



ES B21

MR NLC UPGRADE U8676

DAM RFS MISS AGILE A37

RF SKYE S15

ACT BW	90
ADJ WW	814
ADJ YW	1232
FRAME SC	6.0
ADG	2.6
WDA	3.5
ADJ SC	42.1

EPD	CE	BW	WW	YW	ADG	MCE	MILK	MWW	STAY	DDC	CW	YG	MARB	BF	REA	API	TI
%	20	40	10	10	15	15	1	1	40		1	3		3	1	35	20

- Excellent EPD profile
- Weaned at 814, ratios 111 WW
- Dam is a super Upgrade female with great ratios

35

RFS GUS G182

RYDEEN FARMS | Hetero Black | Homo Polled | 5/8 SM 5/16 AN 1/16 AR | Bull
BD: 4/1/19 | Tattoo: G182 | ASA#: 3595996

W/C LOCK DOWN 206Z

SIRE ES D-LUXE DB21



ES B21

RF DEWPOINT W78

DAM C154

BRANT NUTMEG Y546R

ACT BW	93
ADJ WW	778
ADJ YW	1450
FRAME SC	6.0
ADG	4.2
WDA	4.1
ADJ SC	39.3

EPD	CE	BW	WW	YW	ADG	MCE	MILK	MWW	STAY	DDC	CW	YG	MARB	BF	REA	API	TI
%	11.1	0.6	77.1	124.7	0.30	5.8	23.2	61.7	11.7	9.8	65.3	-0.29	0.19	-0.069	1.09	120.6	76.1
%			10	10	4		40	15			1	35		30	2		20

- Whopper 5/8 blood
- Weaned at 778, ratios 106 WW, 117 YW
- Growthy bull gaining 4+ pounds/day since birth
- Balanced EPD's

36

RFS GUNSMOKE G45

RYDEEN FARMS | Homo Black | Homo Polled | 3/4 SM 3/16 AN 1/16 AR | Bull
BD: 3/10/19 | Tattoo: G45 | ASA#: 3595858

W/C LOCK DOWN 206Z

SIRE ES D-LUXE DB21



ES B21

RF DEWPOINT W78

DAM RFS MISS A233

RF PANDORA

ACT BW	80
ADJ WW	688
ADJ YW	1167
FRAME SC	6.0
ADG	3.0
WDA	3.3
ADJ SC	37.6

EPD	CE	BW	WW	YW	ADG	MCE	MILK	MWW	STAY	DDC	CW	YG	MARB	BF	REA	API	TI
%	16.9	-0.6	64.4	99.0	0.22	10.5	32.0	64.1	16.9	9.5	43.6	-0.33	0.24	-0.101	0.67	137.1	72.4
%	10	25				4	2	10	35		10	25		4		25	40

- Heifer bull
- High milk numbers
- Dam's ratio for BW is 106 (5)

Performance & Peace of Mind

PEACE OF MIND – all bulls are bred and raised at Rydeen Farms. No cooperators herds are utilized. This means more accurate contemporary groups.



LOT 35

YEARLING BULLS



LOT 36



What does this mean?

These bulls and heifers have been parent verified and their EPD's genomically enhanced for accuracy.

Using genomic-enhanced EPDs for selection of young breeding stock provides a level of precision and reliability that's never been available to producers before.



Bob Weaber
Kansas State University

KBHR NEXT LEVEL E206

Homozygous Polled | HOMOZYGOUS BLACK

Next Level is a SimAngus half blood with performance from the Keller Ranch in North Dakota. Purchased as a heifer bull, we have been pleasantly surprised at how his progeny get up and grow! We really like the way his sons have turned out and are just as excited about the daughters.



YEARLING BULLS

37

RFS GRANITE G155

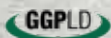
RYDEEN FARMS

Homo Black | Homo Polled | 1/2 SM 1/2 AN | Bull
BD: 3/24/19 | Tattoo: G155 | ASA#: 3595969

GW NATIONAL 231C

SIRE KBHR NEXT LEVEL E206

KBHR C095



CONNELY THUNDER

DAM BRANT KABOOM E185C

BRANT CONSTANCE C185X

ACT BW	80
ADJ WW	780
ADJ YW	1316
FRAME SC	6.0
ADG	3.4
WDA	3.6
ADJ SC	40.3

	CE	BW	WW	YW	ADG	MCE	MILK	MWW	STAY	DOC	CW	YG	MARB	BF	REA	API	TI
EPD	18.3	-0.2	74.4	123.8	0.31	12.2	26.0	63.1	14.7	12.0	33.1	-0.08	0.50	-0.010	0.48	152.4	83.3
%	3	35	20	10	3	1	20	10		40	35		15			5	4

- High calving ease bull
- Ratios 105 BW, 106 WW, 106 YW
- Excellent EPD profile



38

RFS GENERAL G16

RYDEEN FARMS

Homo Black | Homo Polled | 3/4 SM 1/4 AN | Bull
BD: 3/1/19 | Tattoo: G16 | ASA#: 3595829

GW NATIONAL 231C

SIRE KBHR NEXT LEVEL E206

KBHR C095



CCR COWBOY CUT 5048Z

DAM E33

Y34

ACT BW	86
ADJ WW	719
ADJ YW	1322
FRAME SC	6.0
ADG	3.8
WDA	3.5
ADJ SC	38.1

	CE	BW	WW	YW	ADG	MCE	MILK	MWW	STAY	DOC	CW	YG	MARB	BF	REA	API	TI
EPD	15.0	1.6	83.9	134.7	0.32	10.0	21.4	63.3	21.0	12.2	49.6	-0.34	0.32	-0.069	1.04	152.3	82.8
%	15		3	2	2	10		10	3	40	3	25		30	3	5	4

- Big weaning and yearling numbers
- Out of a sweet Cowboy Cut first calf heifer

39

RFS GAUCHO G17

RYDEEN FARMS

Homo Black | Homo Polled | 5/8 SM 1/4 AN 1/8 CS | Bull
BD: 3/1/19 | Tattoo: G17 | ASA#: 3595830

GW NATIONAL 231C

SIRE KBHR NEXT LEVEL E206

KBHR C095



HOOK'S BROADWAY 11B

DAM E105

W21

ACT BW	88
ADJ WW	667
ADJ YW	1233
FRAME SC	6.0
ADG	3.6
WDA	3.2
ADJ SC	38.1

	CE	BW	WW	YW	ADG	MCE	MILK	MWW	STAY	DOC	CW	YG	MARB	BF	REA	API	TI
EPD	10.7	2.7	82.9	135.2	0.33	7.7	26.1	67.5	22.0	13.4	36.5	-0.24	0.61	-0.038	0.79	162.0	87.5
%			3	2	1	30	20	3	1	25	25		10		20	2	1

- 5/8 blood bull
- Top 2% API and Top 1% TI
- Out of a first calf heifer

40

RFS GROVER G48

RYDEEN FARMS

Homo Black | Homo Polled | 1/2 SM 1/2 AN | Bull
BD: 3/11/19 | Tattoo: G48 | ASA#: 3595861

GW NATIONAL 231C

SIRE **KBHR NEXT LEVEL E206**

KBHR C095

HART CHECKMARK 4117

DAM **E136**

W3

ACT BW	85
ADJ WW	733
ADJ YW	1413
FRAME SC	6.0
ADG	4.3
WDA	3.8
ADJ SC	42.6

EPD	CE	BW	WW	YW	ADG	MCE	MILK	MWW	STAY	DOC	CW	YG	MARB	BF	REA	API	TI
	11.1	1.0	81.1	137.3	0.35	7.6	28.0	68.5	11.5	13.3	69.3	-0.20	0.54	-0.027	1.19	141.1	87.2
%			5	1	1	30	10	2		25	1		15		1	15	1

- Great carcass
- Out of a first calf heifer
- Ratios 100 WW, 114 YW
- Big ADG and large scrotal



LOT 40

41

RFS GLEN G62

RYDEEN FARMS

Hetero Black | Hetero Polled | 3/4 SM 1/4 AN | Bull
BD: 3/14/19 | Tattoo: G62 | ASA#: 3595877

GW NATIONAL 231C

SIRE **KBHR NEXT LEVEL E206**

KBHR C095

KS EMBASSY Z7512

DAM **MISS GD B82**

MISS T7

ACT BW	80
ADJ WW	772
ADJ YW	1366
FRAME SC	6.0
ADG	3.7
WDA	3.8
ADJ SC	39.8

EPD	CE	BW	WW	YW	ADG	MCE	MILK	MWW	STAY	DOC	CW	YG	MARB	BF	REA	API	TI
	15.1	0.4	78.1	126.1	0.30	10.3	28.6	67.6	13.7	11.8	52.6	-0.40	0.14	-0.095	1.06	128.1	77.1
%	15		10	5	4	4	10	3			2	10		10	2		20

- 3/4 blood
- Low birth weight bull with performance
- Ratios 110 BW, 105 WW, 110 YW

Performance & Peace of Mind

PERFORMANCE – we focus on the Weaning Weight (WW) EPD since most of our customers market their calves at weaning time.

YEARLING BULLS

42

RFS GERARD G68

RYDEEN FARMS

Homo Black | Homo Polled | 1/2 SM 1/2 AN | Bull
BD: 3/16/19 | Tattoo: G68 | ASA#: 3595883

GW NATIONAL 231C

SIRE **KBHR NEXT LEVEL E206**

KBHR C095

S A V BISMARCK 5682

DAM **D8**

RFS MISS BELIZE B22

ACT BW	82
ADJ WW	727
ADJ YW	1234
FRAME SC	6.0
ADG	3.2
WDA	3.4
ADJ SC	40.9

EPD	CE	BW	WW	YW	ADG	MCE	MILK	MWW	STAY	DOC	CW	YG	MARB	BF	REA	API	TI
	13.2	0.3	77.9	126.9	0.31	8.8	22.4	61.3	17.6	10.5	22.5	-0.20	0.48	-0.037	0.51	151.4	84.0
%	35		10	4	3	15		15	25				20			10	3

- High numbered 1/2 blood
- Well put together
- Out of an attractive Bismarck female



LOT 42

Thank You!

We are sincerely grateful for the amazing people we have met along the way. These relationships mean so much to us. We love hearing how the animals perform in your herd! We are also extremely blessed with family and friends that come at a moment's notice to help out. Lastly, we feel we have about the best teammates around. Perry, Gene, and Tyler are the best! Thank you for all you do day after day, year after year!

G A R RELEVANCE

Homozygous Polled | Black

Relevance is a purebred Angus bull that we used to inject performance with carcass quality into our herd. His SimAngus progeny do not disappoint!



YEARLING BULLS

43 | RFS GOVERNOR G133

RYDEEN FARMS | Hetero Black | Homo Polled | 1/2 SM 1/2 AN | Bull
BD: 3/21/19 | Tattoo: G133 | ASA#: 3595948

SIRE G A R RELEVANCE
GGPLD G A R PROGRESS N1401
SVF/NJC BUILT RIGHT N48
DAM BRANT AMELIA A52
BRANT MACHO MAE U215M

ACT BW	87
ADJ WW	760
ADJ YW	1413
FRAME SC	6.0
ADG	4.1
WDA	4.0
ADJ SC	39.2

	CE	BW	WW	YW	ADG	MCE	MILK	MWW	STAY	DOC	CW	YG	MARB	BF	REA	API	TI
EPD	16.1	0.9	69.1	110.1	0.26	9.2	27.9	62.3	16.9	7.3	35.4	-0.20	0.74	-0.030	0.74	163.0	85.1
%	10		35	25	20	10	10	15	35		30		2		30	2	2

- Calving ease with excellent carcass quality
- Weaned at 760 gaining 4#/day
- Ratios 105 BW, 104 WW, 114 YW

45 | RFS GUCCI G148

RYDEEN FARMS | Homo Black | Homo Polled | 1/2 SM 1/2 AN | Bull
BD: 3/22/19 | Tattoo: G148 | ASA#: 3595963

SIRE G A R RELEVANCE
GGPLD G A R PROGRESS N1401
HTP SVF IN DEW TIME
DAM B47
RF NEVA

ACT BW	79
ADJ WW	779
ADJ YW	1382
FRAME SC	6.0
ADG	3.8
WDA	3.9
ADJ SC	42.2

	CE	BW	WW	YW	ADG	MCE	MILK	MWW	STAY	DOC	CW	YG	MARB	BF	REA	API	TI
EPD	17.4	0.9	75.4	117.0	0.26	9.4	24.8	62.4	16.5	11.8	44.1	-0.20	0.60	-0.034	0.79	157.9	85.1
%	5		15	15	20	10	25	15	40		10		10		20	3	2

- 1/2 blood with growth!
- Out of a nice In Dew Time cow
- Ratios 112 BW, 106 WW, 111 YW

44 | RFS GUARDIAN G146

RYDEEN FARMS | Homo Black | Homo Polled | 3/8 SM 5/8 AN | Bull
BD: 3/22/19 | Tattoo: G146 | ASA#: 3595961

SIRE G A R RELEVANCE
GGPLD G A R PROGRESS N1401
TNT DUAL FOCUS T249
DAM D151
RF PEPPY

ACT BW	80
ADJ WW	646
ADJ YW	1187
FRAME SC	6.0
ADG	3.4
WDA	3.3
ADJ SC	42.2

	CE	BW	WW	YW	ADG	MCE	MILK	MWW	STAY	DOC	CW	YG	MARB	BF	REA	API	TI
EPD	18.0	0.3	70.2	111.4	0.26	9.5	19.6	54.6	13.7	11.8	34.8	-0.07	0.96	-0.001	0.53	166.1	88.8
%	3		30	25	20	10					30		1			1	1

- 3/8 blood
- Another calving ease with excellent carcass quality
- Ratio 108 BW

46 | RFS GENEROUS G161

RYDEEN FARMS | Homo Black | Homo Polled | 1/2 SM 1/2 AN | Bull
BD: 3/26/19 | Tattoo: G161 | ASA#: 3595975

SIRE G A R RELEVANCE
GGPLD G A R PROGRESS N1401
HOOKS SHEAR FORCE 38K
DAM RFS MISS T37
RF RABBIT

ACT BW	86
ADJ WW	727
ADJ YW	1205
FRAME SC	6.0
ADG	3.0
WDA	3.5
ADJ SC	38.5

	CE	BW	WW	YW	ADG	MCE	MILK	MWW	STAY	DOC	CW	YG	MARB	BF	REA	API	TI
EPD	17.2	0.0	63.8	97.1	0.21	8.7	30.7	62.5	19.0	13.5	33.1	-0.27	0.73	-0.042	0.84	166.8	83.1
%	5		40				15	3	15	15	20	35	40	2		15	1

- Top 1% API
- Low birth weight, ratio 106 BW
- Dam has had 11 natural calves at Rydeen Farms

47

RFS GAMEFACE G163

RYDEEN FARMS

Homo Black | Homo Polled | 1/2 SM 1/2 AN | Bull
BD: 3/26/19 | Tattoo: G163 | ASA#: 3595977

SIRE G A R PROPHE T
G A R RELEVANCE



G A R PROGRESS N1401

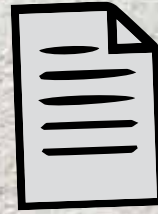
DAM RFS MISS Z33

TNT TANKER U263
W25

ACT BW	90
ADJ WW	740
ADJ YW	1204
FRAME SC	6.0
ADG	3.0
WDA	3.5
ADJ SC	40.5

CE	BW	WW	YW	ADG	MCE	MILK	MWW	STAY	DOC	CW	YG	MARB	BF	REA	API	TI	
EPD	16.1	1.3	73.3	115.1	0.26	10.7	27.5	64.1	18.1	12.2	36.5	-0.22	0.78	-0.021	0.87	168.0	88.0
%	10		20	20	20	3	10	10	20	40	25		1		10	1	1

- Weaned at 740
- Out of a Tanker cow that is as good as they come
- Top 1 % API, TI and marbling



Ultrasound Information
Will Be Available Sale
Day and Online at

www.rydeenfarms.com

G A R PROPHE T

Homozygous Polled | Black

We liked this Angus bull because of his proven performance pedigree in a purebred Angus sire.



LOT 48



G A R PROPHE T

YEARLING BULLS

48

RFS GAMER G103

RYDEEN FARMS

Homo Black | Homo Polled | 1/2 SM 1/2 AN | Bull
BD: 3/18/19 | Tattoo: G103 | ASA#: 3595918

SIRE G A R PROPHE T



G A R OBJECTIVE 1885

DAM Y141

SRS RIGHT-ON 22R
RF SEASON S141

ACT BW	90
ADJ WW	737
ADJ YW	1315
FRAME SC	6.0
ADG	3.7
WDA	3.8
ADJ SC	39.0

CE	BW	WW	YW	ADG	MCE	MILK	MWW	STAY	DOC	CW	YG	MARB	BF	REA	API	TI	
EPD	13.2	1.3	69.6	108.8	0.25	6.1	26.6	61.4	15.5	15.1	48.6	-0.12	0.55	-0.028	0.66	144.1	78.9
%	35		35	30	25		15	15		10	3		10		15	15	

- Out of a 9 year old dam
- Weaned at 737
- Ratios 101 BW, 100 WW, 106 YW

49

RFS GRIT G67

RYDEEN FARMS

Homo Black | Homo Polled | 1/2 SM 1/2 AN | Bull
BD: 3/15/19 | Tattoo: G67 | ASA#: 3595882

SIRE G A R PROPHE T



G A R OBJECTIVE 1885

DAM RFS MISS Z60

TNT TANKER U263
RF MISS RAM P284

ACT BW	93
ADJ WW	745
ADJ YW	1243
FRAME SC	6.0
ADG	3.2
WDA	3.6
ADJ SC	39.9

CE	BW	WW	YW	ADG	MCE	MILK	MWW	STAY	DOC	CW	YG	MARB	BF	REA	API	TI	
EPD	10.7	1.2	73.0	111.9	0.24	7.8	24.0	60.4	13.5	11.9	51.1	-0.07	0.50	-0.013	0.67	135.1	78.8
%			20	25	35	30		20			2		15			30	15

- Performance 1/2 blood
- Out of another tremendous Tanker cow
- Ratios 102 WW, 100 YW

50**RFS GRYGLA G69****RYDEEN FARMS****Homo Black | Homo Polled | 1/2 SM 1/2 AN | Bull**
BD: 3/16/19 | Tattoo: G69 | ASA#: 3595884

C R A BEXTOR 872 5205 608

SIRE G A R PROPHET**GGPLD**

G A R OBJECTIVE 1885

DIKEMANS SURE BET

DAM D40

B78

ACT BW	88
ADJ WW	659
ADJ YW	1285
FRAME SC	6.0
ADG	4.0
WDA	3.5
ADJ SC	36.9

**LOT 50**

CE	BW	WW	YW	ADG	MCE	MILK	MWW	STAY	DOC	CW	YG	MARB	BF	REA	API	TI
EPD 15.0	1.5	78.9	126.0	0.29	8.7	23.9	63.2	11.6	16.4	53.5	0.02	0.77	0.007	0.57	153.9	89.4
% 15		10	5	10	15	35	10		4	1		2			4	1

- Outstanding EPDs, top 4% API, 1% TI, 2% MARB
- Ratio 103 YW
- ADG of 4#

HOOK'S BEACON 56B**Homozygous Polled | Homozygous Black**

The Beacon sons are slam dunk heifer bulls. Keep the daughters.

YEARLING BULLS

**LOT 51****LOT 52****51****RFS GALORE G7****RYDEEN FARMS****Homo Black | Homo Polled | PB SM | Bull**
BD: 2/26/19 | Tattoo: G7 | ASA#: 3595820

HOOKS SHEAR FORCE 38K

SIRE HOOK'S BEACON 56B**GGPLD**

HOOKS ZAFIRAH 41Z

CLRS CONSTITUTION 311 C

DAM E42

RFS MISS Z73

ACT BW	75
ADJ WW	642
ADJ YW	1226
FRAME SC	5.8
ADG	3.7
WDA	3.2
ADJ SC	35.9

CE	BW	WW	YW	ADG	MCE	MILK	MWW	STAY	DOC	CW	YG	MARB	BF	REA	API	TI
EPD 19.5	-1.0	78.6	123.2	0.28	13.0	14.2	53.4	22.8	15.5	46.1	-0.41	0.62	-0.052	1.35	191.0	94.5
% 1	10	15	10	10	1			1	4	2		1		1	1	1

- Highest calving ease in the sale offering
- Second highest API of registered PB Beacon sons
- Both dam and grand dam are donor females
- Top 1% CE, MCE, STAY, MARB, REA, API and TI
- Out of a Constitution first calf heifer

52**RFS GAZETTE G10****RYDEEN FARMS****Homo Black | Homo Polled | 3/4 SM 1/4 AN | Bull**
BD: 2/26/19 | Tattoo: G10 | ASA#: 3595823

HOOKS SHEAR FORCE 38K

SIRE HOOK'S BEACON 56B**GGPLD**

HOOKS ZAFIRAH 41Z

CLRS CONSTITUTION 311 C

DAM E29

RFS MISS CASEY C41

ACT BW	80
ADJ WW	642
ADJ YW	1234
FRAME SC	5.8
ADG	3.7
WDA	3.2
ADJ SC	36.9

CE	BW	WW	YW	ADG	MCE	MILK	MWW	STAY	DOC	CW	YG	MARB	BF	REA	API	TI
EPD 17.5	-0.6	77.5	123.5	0.29	11.7	20.5	59.2	22.1	13.3	29.8	-0.30	0.69	-0.017	1.07	178.8	90.5
% 5	25	10	10	10	2		25	1	25		35	3		2	1	1

- Out of a Constitution first calf heifer
- Another calving ease heifer bull
- Highest API of registered Beacon 3/4 bloods
- Top 1% API and TI; Top 3% MARB and Top 2% REA

53

RFS GURU G12

RYDEEN FARMS

Homo Black | Homo Polled | 3/4 SM 1/4 AN | Bull
BD: 2/28/19 | Tattoo: G12 | ASA#: 3595825

HOOKS SHEAR FORCE 38K

SIRE HOOK'S BEACON 56B

HOOKS ZAFIRAH 41Z

HART CHECKMARK 4117

DAM E198

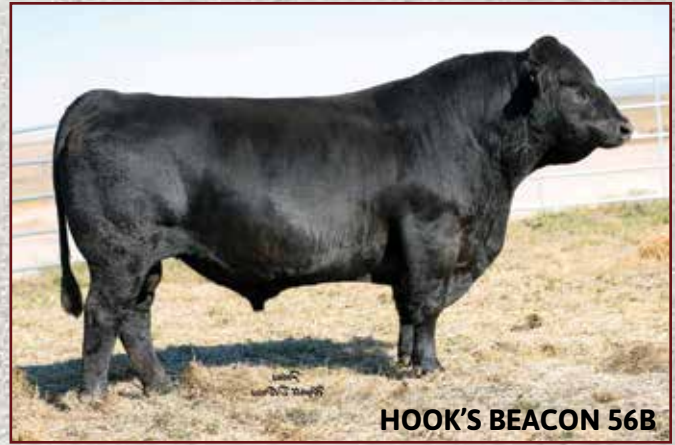
B58



ACT BW	80
ADJ WW	685
ADJ YW	1172
FRAME SC	5.8
ADG	3.1
WDA	3.1
ADJ SC	40.0

CE	BW	WW	YW	ADG	MCE	MILK	MWW	STAY	DOC	CW	YG	MARB	BF	REA	API	TI	
EPD	17.1	-0.8	69.0	103.4	0.22	12.1	29.0	63.4	16.8	12.4	35.5	-0.34	0.50	-0.030	1.15	153.5	81.6
%	10	25	35	40		1	5	10	35	30	25	15		1	4	10	

- Out of a first calf heifer
- Large scrotal
- Ratio 105 BW



HOOK'S BEACON 56B

CLRS CONSTITUTION 311 C

Homozygous Polled | Homozygous Black

Constitution is our senior herd sire. He is a breeding machine with an exceptionally docile disposition. He adds growth and carcass quality with style. We have many Constitution females working in our herd. He will be difficult to replace.



YEARLING BULLS



LOT 54



LOT 55

54

RFS GOOD YEAR G199

RYDEEN FARMS

Homo Black | Homo Polled | 3/4 SM 1/4 AN | Bull
BD: 4/8/19 | Tattoo: G199 | ASA#: 3596013

J BAR J NIGHTRIDE 225Z

SIRE CLRS CONSTITUTION 311 C

CLRS AID XCELLENCE 311 A

ELLINGSON RIGHT ON W944

DAM Z174

RFS MISS T86



ACT BW	88
ADJ WW	883
ADJ YW	
FRAME SC	6.0
ADG	3.2
WDA	4.0
ADJ SC	38.2

CE	BW	WW	YW	ADG	MCE	MILK	MWW	STAY	DOC	CW	YG	MARB	BF	REA	API	TI	
EPD	11.6	2.2	75.5	126.2	0.32	6.2	26.7	64.4	15.9	15.3	59.7	-0.29	0.28	-0.069	1.02	141.8	80.4
%		15	5	2		15	10		10	1	35		30	3	15	10	

- 883 Weaning--#1 in group of 121
- Too young to get an adjusted yearling weight
- Ratios 102 BW, 120 WW

55

RFS GRANT G165

RYDEEN FARMS

Homo Black | Homo Polled | 5/8 SM 1/4 AN 1/8 CS | Bull
BD: 3/27/19 | Tattoo: G165 | ASA#: 3595979

J BAR J NIGHTRIDE 225Z

SIRE CLRS CONSTITUTION 311 C

CLRS AID XCELLENCE 311 A

TNT TANKER U263

DAM RFS MISS Z47

RFS MISS M160



ACT BW	75
ADJ WW	720
ADJ YW	1217
FRAME SC	6.0
ADG	3.1
WDA	3.5
ADJ SC	39.5

CE	BW	WW	YW	ADG	MCE	MILK	MWW	STAY	DOC	CW	YG	MARB	BF	REA	API	TI	
EPD	12.0	1.3	76.3	122.5	0.29	6.6	15.8	53.9	15.6	18.3	36.6	-0.38	0.30	-0.087	0.86	134.1	77.1
%		15	10	10					1	25	15		15	15	30	20	

- Twin out of a moderate Tanker cow
- Top 15% for WW and Top 10% for YW

Performance & Peace of Mind

PERFORMANCE – we focus on the Yearling Weight (YW) EPD as this heritable trait influences the growth potential in the feedlot.



LOT 57

58 | RFS GRAYSON G78

RYDEEN FARMS | Homo Black | Homo Polled | PB SM | Bull
BD: 3/16/19 | Tattoo: G78 | ASA#: 3595893

SIRE CCR GRAVITY 9064A
KBHR NIGHTWATCH C114
KBHR A202
DAM LCHMN BRIGHT LIGHT L122L
RFS MISS Z10
X72

CE	BW	WW	YW	ADG	MCE	MILK	MWW	STAY	DOC	CW	YG	MARB	BF	REA	API	TI
8.7	1.6	68.5	103.1	0.22	5.6	36.0	70.2	20.6	11.7	38.7	-0.39	0.08	-0.105	0.79	132.9	72.1
%			40		1	1	10	35	15	35				25	35	

- Powerful PB
- Ratios 115 WW, 101 YW
- Weaned at 844



LOT 60

56 | RFS GRADE A G197

RYDEEN FARMS | Homo Black | Homo Polled | 3/4 SM 1/4 AN | Bull
BD: 4/7/19 | Tattoo: G197 | ASA#: 3596011

SIRE J BAR J NIGHTRIDE 225Z
CLRS CONSTITUTION 311 C
CLRS AID XCELLENCE 311 A
DAM RF DEWPOINT W78
RFS MISS Z143

CE	BW	WW	YW	ADG	MCE	MILK	MWW	STAY	DOC	CW	YG	MARB	BF	REA	API	TI
9.8	2.1	74.8	123.7	0.31	4.8	21.7	59.0	14.8	16.9	40.8	-0.34	0.24	-0.094	0.72	134.9	78.5
%		15	10	3			25		3	15	25		10	35	30	15

- Weaned at 852
- Ratios 116 WW, 112 YW
- Younger calf with large scrotal

57 | RFS GAUNTLET G6

RYDEEN FARMS | Homo Black | Homo Polled | 5/8 SM 3/8 AN | Bull
BD: 2/25/19 | Tattoo: G6 | ASA#: 3595819

SIRE HOOVER DAM
CCR BOULDER 1339A
CCR MS L TAYLOR 1339Y
DAM GW WOLFPACK 712A
PCR A328 WOLFPACK E789
PCR FUTURE FOCUS A328

CE	BW	WW	YW	ADG	MCE	MILK	MWW	STAY	DOC	CW	YG	MARB	BF	REA	API	TI	
13.6	-0.2	69.9	110.6	0.25	8.0	13.9	48.8	12.2	12.7	24.7	-0.28	0.55	-0.052	0.67	142.1	80.7	
%		30	35	30	25	25				30		40	10	40		15	10

- Outcross pedigree
- Out of dam we purchased from the Polson Creek dispersal

59 | RFS GENIE G111

RYDEEN FARMS | Homo Black | Homo Polled | 1/2 SM 1/2 AN | Bull
BD: 3/19/19 | Tattoo: G111 | ASA#: 3595926

SIRE G A R PROGRESS
G A R MOMENTUM
G A R BIG EYE 1770
DAM KBHR Y068 HARLEY
RFS MISS ACCORD A16
RF SOFIA S13

CE	BW	WW	YW	ADG	MCE	MILK	MWW	STAY	DOC	CW	YG	MARB	BF	REA	API	TI
17.1	0.7	71.0	113.8	0.27	7.0	23.5	58.9	18.1	17.7	61.8	-0.17	0.60	-0.038	0.90	159.8	82.5
%		10	30	20	15	40	35	25	20	2	1	10		10	2	5

- Great 1/2 blood
- Weaned at 809, gaining 4#/day
- Ratios 103 BW, 110 WW, 113 YW

60 | RFS GRADY G4

RYDEEN FARMS | Homo Black | Homo Polled | PB SM | Bull
BD: 2/24/19 | Tattoo: G4 | ASA#: 3595817

SIRE BDV TRUE GRIT 11X
BBS TRUE JUSTICE B10
BBS MISS JUSTICE Z7
DAM SVF ALLEGIANCE Y802
E40
RFS MISS Z72

CE	BW	WW	YW	ADG	MCE	MILK	MWW	STAY	DOC	CW	YG	MARB	BF	REA	API	TI
9.9	2.3	81.1	126.4	0.28	4.6	31.0	71.5	11.7	15.5	29.8	-0.55	0.12	-0.127	0.98	124.5	80.6
%		10	4	10		2	1		4		10	25	20	20		5

- Performance bull
- Outcross pedigree
- Out of an Allegiance first calf heifer



LOT 61



LOT 62

61

RFS GRIZZLY G65

RYDEEN FARMS

Hetero Black | Homo Polled | PB SM | Bull
BD: 3/15/19 | Tattoo: G65 | ASA#: 3595880

SIRE

ELLINGSON LOAD UP B4022



REMINGTON LOCK N LOAD54U

BRANT R17K MS TOP SHELF

HTP SVF IN DEW TIME

DAM

W15

RF SOLITA S35

ACT BW	90
ADJ WW	785
ADJ YW	1410
FRAME SC	6.0
ADG	3.9
WDA	3.9
ADJ SC	43.4

EPD	CE	BW	WW	YW	ADG	MCE	MILK	MWW	STAY	DOC	CW	YG	MARB	BF	REA	API	TI
15.8	1.6	73.8	112.3	0.24	8.3	13.1	49.9	19.7	13.2	39.9	-0.40	0.00	-0.081	1.01	138.1	72.0	
%	3		25	25	25	10			20	15	10				15	15	35

- Lois' favorite bull
- Beautiful phenotype, smooth sided, easy stride, athletic
- Ratios 107 WW, 113 YW

62

RFS/TH GLACIER G248

RYDEEN FARMS

Homo Black | Homo Polled | 3/4 SM 1/4 AN | Bull
BD: 3/25/19 | Tattoo: G248 | ASA#: 3647215

SIRE

BCLR WIDE LOAD C21-3



CCR WIDE RANGE 9005A

WS MOTHER LODE W21

HART CHECKMARK 4117

DAM

RFS MISS DYNA D153

B53

ACT BW	90
ADJ WW	835
ADJ YW	1254
FRAME SC	6.0
ADG	2.7
WDA	3.5
ADJ SC	42.4

EPD	CE	BW	WW	YW	ADG	MCE	MILK	MWW	STAY	DOC	CW	YG	MARB	BF	REA	API	TI
11.5	2.0	77.6	118.3	0.25	7.3	24.6	63.3	18.3	12.6	20.7	-0.40	0.23	-0.072	0.85	133.0	75.8	
%			10	15	25	35	30	10	20	35		10		20	15	30	25

- Outcross pedigree
- Great weaning and yearling numbers
- Weaned at 835
- Large scrotal bull

YEARLING BULLS

Watch & bid online for FREE at



Can't make the sale? Bid from home with DV Auction's "real-time" internet bidding service!

Buying online is as easy as 1, 2, 3...

1. Create an account at www.dvauction.com under the "register" tab
2. Apply for bidding approval by clicking on the "details" tab at least 24 hours prior to the auction-a DV representative will notify you once you have been approved
3. Tune in for the sale and make you purchases!

After the sale, contact the sale manager or owner to arrange transportation and payment. **High speed internet** is required for successful bidding-be sure to check the lag-time monitor in the top left corner to ensure real-time broadcasts.

Proxy Bidding-if you can't make time to watch the sale, register a proxy bid and let our system represent your bid while you're away. Look for the "proxy bid" tab on the auction listing, and fill in your maximum bids. We'll handle the rest!

Having troubles? During the auction, you can type a message to the operator at any time for assistance. Our full-time support team can also always be reached at (402) 474-5557.



Full Service Livestock Marketing

Video - Photography - The Stock Exchange - Ring Service - Banner Ads - Onsite Viewing Service



IR Imperial D948

Homozygous Polled | Red

Imperial was our go-to heifer bull on the red side of our program. He is a calving ease specialist with excellent carcass numbers.

64 | RFS GOODRIDGE G76

RYDEEN FARMS

Red | Homo Polled | PB SM | Bull
BD: 3/16/19 | Tattoo: G76 | ASA#: 3595891

SIRE IR IMPERIAL D948
GGPLD IR MS DUAL FOCUS W086
DAM Y63 TNT GUNNER N208
U26

ACT BW	93
ADJ WW	647
ADJ YW	1095
FRAME SC	6.0
ADG	2.8
WDA	3.1
ADJ SC	38.9

EPD	CE	BW	WW	YW	ADG	MCE	MILK	MWW	STAY	DOC	CW	YG	MARB	BF	REA	API	TI
13.8	-0.4	61.9	84.7	0.14	7.9	27.7	58.5	19.4	15.2	8.7	-0.46	0.28	-0.072	0.87	147.8	75.1	
%	10	10			15	10	35	20	5			10			40	5	20

- Dam is a dark cherry red 9 year old Gunner female
- Calving ease bull
- Top 10% CE, BW, MILK and MARB



IR IMPERIAL D948

63

RYDEEN FARMS

RFS GRAND G116

Red | Homo Polled | PB SM | Bull
BD: 3/19/19 | Tattoo: G116 | ASA#: 3595931

SIRE IR IMPERIAL D948
GGPLD IR MS DUAL FOCUS W086
TJ POWER GRID 363Y
DAM CDI MS CAYLA 17C
HOOK'S UNION 68U

ACT BW	89
ADJ WW	783
ADJ YW	1247
FRAME SC	6.0
ADG	2.9
WDA	3.5
ADJ SC	40.1

EPD	CE	BW	WW	YW	ADG	MCE	MILK	MWW	STAY	DOC	CW	YG	MARB	BF	REA	API	TI
12.2	-0.8	63.1	92.7	0.19	7.8	33.1	64.6	17.5	17.4	39.3	-0.26	0.45	-0.049	0.82	152.7	80.5	
%	25	10			15	1	10		1	10		1			3	5	

- Weaned at 783, more performance in this Imperial calf
- Out of female purchased from C Diamond Ranch
- Ratios 107 WW, 100 YW
- Top 1 % for MILK, DOC and MARB, Top 3% API, 5% TI

65

RYDEEN FARMS

RFS GROWLER G124

Red | Homo Polled | PB SM | Bull
BD: 3/20/19 | Tattoo: G124 | ASA#: 3595939

SIRE IR IMPERIAL D948
GGPLD IR MS DUAL FOCUS W086
WS PRIME TIME B6
DAM BCLR MISS PRM TIME D618
BCLR MISS BEEF KING B438

ACT BW	84
ADJ WW	662
ADJ YW	1060
FRAME SC	6.0
ADG	2.5
WDA	2.9
ADJ SC	42.1

EPD	CE	BW	WW	YW	ADG	MCE	MILK	MWW	STAY	DOC	CW	YG	MARB	BF	REA	API	TI
14.0	-1.2	64.9	91.8	0.17	8.7	22.5	54.9	17.2	8.8	19.6	-0.48	0.20	-0.102	0.85	142.4	75.7	
%	10	5			10							15			10	20	

- Out of a female purchased from Bichler Simmentals and Red Angus
- Large scrotal
- Heifer bull

66

RYDEEN FARMS

RFS GAMEPLAN G135

Red | Hetero Polled | PB SM | Bull
BD: 3/21/19 | Tattoo: G135 | ASA#: 3595950

SIRE IR IMPERIAL D948
GGPLD IR MS DUAL FOCUS W086
RFS T46
DAM RFS MISS Z120
U8

ACT BW	85
ADJ WW	625
ADJ YW	1109
FRAME SC	6.0
ADG	3.0
WDA	3.2
ADJ SC	41.2

EPD	CE	BW	WW	YW	ADG	MCE	MILK	MWW	STAY	DOC	CW	YG	MARB	BF	REA	API	TI
16.6	-1.2	54.8	82.5	0.17	10.0	33.6	60.9	16.6	13.0	12.1	-0.33	0.11	-0.078	0.45	135.8	68.4	
%	2	5			2	1	20		20			30			20		

- Calving ease bull, ratios 106 BW
- Large scrotal
- Bull with good maternal traits

Performance & Peace of Mind

PERFORMANCE – we focus on the Marbling (MARB) EPD because consumers demand this and this highly heritable trait will increase return to the producer.

67**RFS GIGABIT G150**

RYDEEN FARMS

Red | Homo Polled | PB SM | Bull

BD: 3/23/19 | Tattoo: G150 | ASA#: 3595965

IR IMPERIAL B772

SIRE IR IMPERIAL D948

IR MS DUAL FOCUS W086



HOOKS/KS SEQUOIA 355

DAM KS MISS SEQUOIA X503

KS RANA R323

ACT BW	82
ADJ WW	723
ADJ YW	1157
FRAME SC	6.0
ADG	2.7
WDA	3.3
ADJ SC	41.3

EPD	CE	BW	WW	YW	ADG	MCE	MILK	MWW	STAY	DOC	CW	YG	MARB	BF	REA	API	TI
13.3	1.1	65.0	88.2	0.15	9.3	31.0	63.4	21.8	17.6	21.9	-0.47	0.37	-0.092	0.93	155.2	77.7	
%	15	35			4	2	10	2	1			2			30	2	15

- Deep bodied fellow
- Top 2% MILK, STAY, MARB and API
- Dam has had 8 natural calves and ratios 110 on all 8



LOT 67

68**RFS GADGET G157**

RYDEEN FARMS

Red | Homo Polled | PB SM | Bull

BD: 3/25/19 | Tattoo: G157 | ASA#: 3595971

IR IMPERIAL B772

SIRE IR IMPERIAL D948

IR MS DUAL FOCUS W086



35R

DAM X124

RFS MICHELLE

ACT BW	88
ADJ WW	694
ADJ YW	1117
FRAME SC	6.0
ADG	2.6
WDA	3.2
ADJ SC	40.4

EPD	CE	BW	WW	YW	ADG	MCE	MILK	MWW	STAY	DOC	CW	YG	MARB	BF	REA	API	TI
14.2	-0.8	57.9	80.1	0.14	7.1	30.1	58.9	19.4	18.2	17.8	-0.47	0.31	-0.112	0.71	149.3	74.3	
%	10	10			20	3	30	20	1			4			4	25	

- Low birth weight
- Long, deep sided calving ease bull
- Top 4% MARB and API



LOT 68

YEARLING BULLS

69**RFS GARRETT G172**

RYDEEN FARMS

Red | Homo Polled | PB SM | Bull

BD: 3/28/19 | Tattoo: G172 | ASA#: 3595986

IR IMPERIAL B772

SIRE IR IMPERIAL D948

IR MS DUAL FOCUS W086



RFS T46

DAM RFS MISS ACOLYTE A173

X124

ACT BW	90
ADJ WW	720
ADJ YW	1164
FRAME SC	6.0
ADG	2.8
WDA	3.3
ADJ SC	42.6

EPD	CE	BW	WW	YW	ADG	MCE	MILK	MWW	STAY	DOC	CW	YG	MARB	BF	REA	API	TI
13.2	0.1	60.2	88.3	0.18	7.6	28.5	58.5	18.4	17.0	14.3	-0.48	0.06	-0.087	0.87	132.7	68.6	
%	15	15			15	10	35	35	2			40			40	30	

- Moderate framed calving ease bull
- Would work great on Red Angus females
- Large scrotal bull

*Performance & Peace of Mind***PEACE OF MIND – all red bulls are tested dilutor free.****PUREBRED SIMMENTAL EPD AVERAGES**

%	API	TI	CE	BW	WW	PWG	YW	MCE	MLK	MWW	STY	DOC	CWT	YG	MRB	BF	REA	SF
1	158.57	85.63	17.1	-2.5	89.3	0.31	136.1	10.4	32	69.9	22.3	17	48.6	-0.6	0.41	-0.15	1.22	-0.51
25	132.73	73.46	11.8	0.8	73.6	0.23	110.4	6.6	24.3	59.5	19	12.2	33.7	-0.5	0.11	-0.12	0.93	-0.37
50/Avg	123.77	68.93	10	1.8	67.8	0.2	100.6	5.2	21.6	55.6	17.4	10.5	28.3	-0.46	0.01	-0.11	0.82	-0.33

HYBRID SIMMENTAL EPD AVERAGES

%	API	TI	CE	BW	WW	PWG	YW	MCE	MLK	MWW	STY	DOC	CWT	YG	MRB	BF	REA	SF
1	164.21	86.95	19.6	-4.4	87.4	0.32	136.6	11.7	32.2	70.5	21.8	18	53.4	-0.52	0.77	-0.13	1.09	-0.52
25	135.13	74.68	13.7	-0.5	71.1	0.24	109.6	7.8	24.6	58.6	17.5	13	35.6	-0.32	0.42	-0.07	0.75	-0.38
50/Avg	123.83	69.24	11.7	0.6	64.5	0.21	98.5	6.3	21.7	54.4	15.4	11.2	29.5	-0.23	0.28	-0.04	0.62	-0.32

WS ALL ABOARD B80

Homozygous Polled | Red

We really have liked the All Aboard calves. This was the third year we used him on our Complete and Bulletproof females.



YEARLING BULLS

70 | RFS GEMSTONE G3

RYDEEN FARMS

Red | Homo Polled | PB SM | Bull
BD: 2/24/19 | Tattoo: G3 | ASA#: 3595816

SIRE WS ALL ABOARD B80



WS ALL-AROUND Z35

WS LITTLE SISTER W37

ELLINGSON COMPLETE A358

DAM E122

U1

ACT BW	78
ADJ WW	739
ADJ YW	1269
FRAME SC	5.8
ADG	3.3
WDA	3.3
ADJ SC	40.8

	CE	BW	WW	YW	ADG	MCE	MILK	MWW	STAY	DOC	CW	YG	MARB	BF	REA	API	TI
EPD	13.6	0.2	87.2	129.1	0.26	8.5	19.3	62.8	12.8	18.2	31.6	-0.48	0.20	-0.112	0.91	140.4	87.4
%	15	20	2	3	15	10		15		1	35		15		30	15	1

- Ratios 106 BW, 101 WW, 102 YW
- Weaned at 739
- Out of a first calf heifer



71 | RFS GOLDEN G21

RYDEEN FARMS

Red | Homo Polled | PB SM | Bull
BD: 3/3/19 | Tattoo: G21 | ASA#: 3595835

SIRE WS ALL ABOARD B80



WS ALL-AROUND Z35

WS LITTLE SISTER W37

GW REDESTINED 642X

DAM E91

RFS MISS Z52

ACT BW	84
ADJ WW	813
ADJ YW	1271
FRAME SC	6.0
ADG	2.9
WDA	3.4
ADJ SC	38.2

	CE	BW	WW	YW	ADG	MCE	MILK	MWW	STAY	DOC	CW	YG	MARB	BF	REA	API	TI
EPD	13.3	0.7	92.4	136.8	0.28	8.3	17.5	63.6	14.6	17.3	51.0	-0.55	0.27	-0.135	1.19	149.2	91.9
%	15	25	1	1	10	10		10		1	1	10	10	10	2	4	1

- Out of a first calf heifer
- Ratios 111 WW, 102 YW
- Top 1% WW and YW
- Top 4% API and Top 1% TI

72 | RFS GARTH G23

RYDEEN FARMS

Red | Homo Polled | PB SM | Bull
BD: 3/3/19 | Tattoo: G23 | ASA#: 3595837

SIRE WS ALL ABOARD B80



WS ALL-AROUND Z35

WS LITTLE SISTER W37

HOOK'S XPECTATION 36X

DAM E49

C176

ACT BW	79
ADJ WW	712
ADJ YW	1102
FRAME SC	6.0
ADG	2.5
WDA	2.9
ADJ SC	34.2

	CE	BW	WW	YW	ADG	MCE	MILK	MWW	STAY	DOC	CW	YG	MARB	BF	REA	API	TI
EPD	13.5	-0.2	83.4	116.1	0.20	8.0	10.3	51.9	18.4	18.6	22.9	-0.48	0.50	-0.082	1.03	165.6	91.7
%	15	15	4	15		10		35	1			1			15	1	1

- Out of a first calf heifer
- Top 1% MARB and TI, Top 2% API
- Heifer bull prospect

73

RFS GABRIEL G34

RYDEEN FARMS

Red | Homo Polled | PB SM | Bull
BD: 3/6/19 | Tattoo: G34 | ASA#: 3595848

SIRE WS ALL ABOARD B80
GGPLD
DAM E120

WS ALL-AROUND Z35
WS LITTLE SISTER W37
RFS BULLETPROOF B42
RFS MISS ACORN A184

ACT BW	80
ADJ WW	728
ADJ YW	1232
FRAME SC	6.0
ADG	3.2
WDA	3.2
ADJ SC	38.4

EPD	CE	BW	WW	YW	ADG	MCE	MILK	MWW	STAY	DOC	CW	YG	MARB	BF	REA	API	TI
13.6	1.2	86.9	129.6	0.27	8.5	17.0	60.3	16.9	14.3	45.4	-0.56	0.32	-0.124	1.24	154.1	89.3	
%	15	40	2	3	10	10		25		10	3	10	4	20	1	2	1

- Out of a first calf heifer
- Great EPD profile, see CE and YW numbers

74

RFS GRANDSTAND G86

RYDEEN FARMS

Red | Homo Polled | PB SM | Bull
BD: 3/17/19 | Tattoo: G86 | ASA#: 3595901

SIRE WS ALL ABOARD B80
GGPLD
DAM Z130

WS ALL-AROUND Z35
WS LITTLE SISTER W37
RFS T46
RBS RFS S 6

ACT BW	85
ADJ WW	712
ADJ YW	1084
FRAME SC	6.0
ADG	2.3
WDA	3.1
ADJ SC	37.0

EPD	CE	BW	WW	YW	ADG	MCE	MILK	MWW	STAY	DOC	CW	YG	MARB	BF	REA	API	TI
15.1	0.0	71.8	105.1	0.21	9.7	25.4	61.3	15.9	18.5	39.9	-0.58	-0.09	-0.124	1.24	126.9	72.2	
%	4	15	35	40		3	20	20		1	10	4		20	1		35

- Calving ease bull
- Low birth weight

Performance & Peace of Mind

PEACE OF MIND – as always, we stand behind our product 100% and your satisfaction is guaranteed if you buy online or in the barn!



YEARLING BULLS

KBHR KINGSMAN E144

Homozygous Polled | Red

We purchased Kingsman as an All Aboard son with a bit more punch than his sire. He is very docile and we are so pleased with his calves, they are some of the heaviest calves at weaning.



KBHR KINGSMAN E144

75

RFS GAMEDAY G142

RYDEEN FARMS

Red | Homo Polled | PB SM | Bull
BD: 3/22/19 | Tattoo: G142 | ASA#: 3595957

SIRE KBHR KINGSMAN E144
GGPLD
DAM RFS MISS APPRECIATE A8

WS ALL ABOARD B80
KBHR Z041
TRAXS RUSHMORE X103
RFS MISS ACORN A184

ACT BW	85
ADJ WW	760
ADJ YW	1155
FRAME SC	6.0
ADG	2.5
WDA	3.3
ADJ SC	39.2

EPD	CE	BW	WW	YW	ADG	MCE	MILK	MWW	STAY	DOC	CW	YG	MARB	BF	REA	API	TI	
12.3	0.1	75.5	107.8	0.20	7.7	16.0	53.7	19.2	16.8	37.9	-0.51	0.17	-0.137	0.90	144.9	79.2		
%	25	15	20	35		15				25	2	15	25	20	10	35	10	10

- Deep bodied, soggy rascal
- Ratio 106 BW,104 WW
- Top 10% API and TI

76

RFS GREGORY G87

RYDEEN FARMS

Red | Homo Polled | PB SM | Bull

BD: 3/17/19 | Tattoo: G87 | ASA#: 3595902

WS ALL ABOARD B80

SIRE **KBHR KINGSMAN E144**

KBHR Z041

35R

DAM **RFS MISS DAME D104**

Y63

ACT BW	83
ADJ WW	757
ADJ YW	1125
FRAME SC	6.0
ADG	2.3
WDA	3.1
ADJ SC	39.0

CE	BW	WW	YW	ADG	MCE	MILK	MWW	STAY	DOC	CW	YG	MARB	BF	REA	API	TI	
EPD	12.8	0.9	73.8	98.9	0.16	7.8	21.8	58.6	17.5	16.5	31.4	-0.54	0.24	-0.133	0.92	142.4	79.1
%	20	30	25		15		35		2	40	15	10	10	30	10	10	

- Ratio 102 BW, 103 WW
- Poundmaker with excellent carcass



77

RFS GUILFORD G112

RYDEEN FARMS

Red | Homo Polled | PB SM | Bull

BD: 3/19/19 | Tattoo: G112 | ASA#: 3595927

WS ALL ABOARD B80

SIRE **KBHR KINGSMAN E144**

KBHR Z041

RFS T46

DAM **RFS MISS Z155**

RF MISS L111

ACT BW	89
ADJ WW	829
ADJ YW	1207
FRAME SC	6.0
ADG	2.4
WDA	3.4
ADJ SC	38.1

CE	BW	WW	YW	ADG	MCE	MILK	MWW	STAY	DOC	CW	YG	MARB	BF	REA	API	TI	
EPD	15.4	2.1	72.0	100.6	0.18	8.5	21.9	57.8	16.4	15.2	21.4	-0.50	0.08	-0.125	0.73	133.1	73.3
%	4		35			10		40		5		30	35	20		25	30

- Top 4% for CE
- Weaned at 829
- Ratios 100 BW, 113 WW

78

RFS GROOVY G159

RYDEEN FARMS

Red | Homo Polled | PB SM | Bull

BD: 3/25/19 | Tattoo: G159 | ASA#: 3595973

WS ALL ABOARD B80

SIRE **KBHR KINGSMAN E144**

KBHR Z041

TNT GUNNER N208

DAM **Y54**

RF PRECISE

ACT BW	89
ADJ WW	775
ADJ YW	1175
FRAME SC	6.0
ADG	2.5
WDA	3.3
ADJ SC	38.4

CE	BW	WW	YW	ADG	MCE	MILK	MWW	STAY	DOC	CW	YG	MARB	BF	REA	API	TI	
EPD	12.7	1.7	74.7	101.2	0.17	7.0	21.3	58.5	22.2	14.2	32.4	-0.54	-0.132	0.95	137.3	72.6	
%	20		25			25		35	2	10	35	15		10	25	20	30

- Top 20 % for CE and API
- Ratios 100 BW, 106 WW
- Out of a good Gunner cow

79

RFS GRINGO G206

RYDEEN FARMS

Red | Homo Polled | PB SM | Bull

BD: 4/10/19 | Tattoo: G206 | ASA#: 3596020

WS ALL ABOARD B80

SIRE **KBHR KINGSMAN E144**

KBHR Z041

DCR MR HIGHLANDER X425

DAM **RFS MISS ALIGN A42**

X9

ACT BW	92
ADJ WW	815
ADJ YW	
FRAME SC	6.0
ADG	2.3
WDA	3.4
ADJ SC	41.3

CE	BW	WW	YW	ADG	MCE	MILK	MWW	STAY	DOC	CW	YG	MARB	BF	REA	API	TI	
EPD	16.1	1.8	77.9	111.1	0.21	9.4	21.3	60.2	17.0	15.4	23.0	-0.47	0.15	-0.137	0.58	142.0	78.9
%	3		15	25		3		25		4				20	10		10

- Top 3% CE, Top 10% API and TI
- Weaned at 815 and ratio 111 WW
- Too young to calculate a yearling weight

80

RFS GIZMO G216

RYDEEN FARMS

Red | Homo Polled | PB SM | Bull

BD: 4/16/19 | Tattoo: G216 | ASA#: 3596030

WS ALL ABOARD B80

SIRE **KBHR KINGSMAN E144**

KBHR Z041

ELLINGSON COMPLETE A358

DAM **C131**

W6

ACT BW	87
ADJ WW	829
ADJ YW	
FRAME SC	6.0
ADG	3.0
WDA	3.6
ADJ SC	35.6

CE	BW	WW	YW	ADG	MCE	MILK	MWW	STAY	DOC	CW	YG	MARB	BF	REA	API	TI	
EPD	11.8	2.4	89.8	123.8	0.21	7.1	12.0	56.9	17.3	12.9	28.1	-0.40	0.11	-0.096	0.74	136.8	82.0
%	30		1	10		20				20			30			20	4

- Weaned at 829 and ratio 113 WW
- Top 1% for WW
- Youngest bull calf in the sale offering



Performance & Peace of Mind

PEACE OF MIND – the bulls and bred females are parent verified.



TJ HEISMAN 388F



KRJ HZN DIRECT IMPACT F805



BRIDLE BIT BEST MAN F839

REFERENCE SERVICE SIRES

PUREBRED SIMMENTAL REFERENCE SIRES

Name	ASA #	Sire x Dam	Breeds	CE	BW	WW	YW	ADG	MCE	Milk	MW	API	TI
BRIDLE BIT BEST MAN F839	3423917	WS Outcross C164 x Bridle Bit Miss A382	PB SM	18.0	-0.3	71.4	111.8	0.25	10.1	21.6	57.2	148.4	78.7
KRJ HZN DIRECT IMPACT F805	3468391	Hook's Black Hawk 50B x OMF/DK Darling D49	PB SM	17.4	-1.1	84.0	127.9	0.27	9.5	21.2	63.1	158.6	87.5
TJ HEISMAN 388F	3459048	Koch Big Timber 685D x TJ 67D	PB SM	14.7	-0.8	81.2	119.5	0.24	10.1	26.1	66.6	174.5	91.8
CCR COWBOY CUT 5048Z	2703910	Triple C Singletary S3H x CCR Ms 4045 Time 7322T	PB SM	12.1	2.6	91.9	127.4	0.22	7.9	23.8	69.6	163.4	91.5

SIMANGUS REFERENCE SIRES

Name	ASA #	Sire x Dam	Breeds	CE	BW	WW	YW	ADG	MCE	Milk	MW	API	TI
CDI 49ER 257D	3152330	TJ Main Event 503B x CDI Ms Yesterday 29B	3/4SM1/4AN	20.7	-3.2	68.5	97.6	0.18	10.6	30.5	64.7	148.4	79.8
KBHR NEXT LEVEL E206	3312199	GW National 231C x KBHR C095	1/2 SM 1/2 AN	15.7	0.7	82.7	143.1	0.38	10.7	28.8	70.1	164.0	92.5
J BAR J NIGHTRIDE 225Z	2628568	GW Premium Beef 021TS x J Bar J Miss ND 793X	5/8 SM 3/8 AN	17.1	-2.3	69.6	112.5	0.27	7.8	6.8	41.5	170.0	90.3
HOOK'S FLINT 2F	3403314	Hook's Beacon 56B x Hook's Danisha 116D	3/4 SM 1/4 AN	18.8	-2.4	75.0	113.3	0.24	13.1	15.2	52.6	174.2	91.9



LOT 82



LOT 81

81 | RFS MISS FAITH F56

RYDEEN FARMS

Black | Polled | 3/4 SM 1/4 AN | Cow

BD: 3/9/18 | Tattoo: F56 | ASA#: 3462234 | Adj. BW: 91 | Adj. WW: 579

SVF ALLEGIANCE Y802

SIRE RFS CAPTAIN C21

W15

W R BAR IN FOCUS 730

DAM W185

RFS MISS T75

PROJECTED EPDS	
CE	15.2
BW	0.4
WW	69.5
YW	107.0
MCE	8.5
MILK	21.5
MWW	56.1

EPD	CE	BW	WW	YW	ADG	MCE	MILK	MWW	STAY	DOC	CW	YG	MARB	BF	REA	API	TI
12.3	1.0	67.6	102.1	0.22	6.8	21.3	55.0	14.9	13.2	40.1	-0.25	0.19	-0.059	0.71	122.0	69.0	
%		40							25	15				40	35		

- Dam has had 9 natural calves with a 365 day interval
- Dam has a Proclamation bull in the sale (G134), Lot 23
- Ultrasound safe to AI, predicts March 3 heifer calf
- AI'd on 5/22/19 to Best Man, PE to Next Level 6/16-8/12

82 | RFS MISS FRANCIE F57

RYDEEN FARMS

Homo Black | Homo Polled | PB SM | Cow

BD: 3/9/18 | Tattoo: F57 | ASA#: 3462235 | Adj. BW: 80 | Adj. WW: 632

REMINGTON LOCK N LOAD54U

SIRE ELLINGSON LOAD UP B4022

BRANT R17K MS TOP SHELF

HALE BLACK DIAMOND P192

DAM Y62

U65

PROJECTED EPDS	
CE	14.9
BW	-0.3
WW	71.9
YW	107.7
MCE	7.7
MILK	21.8
MWW	57.6

EPD	CE	BW	WW	YW	ADG	MCE	MILK	MWW	STAY	DOC	CW	YG	MARB	BF	REA	API	TI
12.4	0.6	59.7	87.5	0.17	5.8	22.3	52.0	18.6	12.9	27.8	-0.50	-0.12	-0.113	0.91	121.0	62.5	
%		20	25						40	35	20		30		30		

- Dam has had 7 natural calves with a 364 day interval
- Dam has a High Road bull in the sale (G137), Lot 29
- Ultrasound safe to AI, predicts a March 3 calf
- AI'd on 5/22/19 to Direct Impact, PE to Next Level 6/16-8/12

83 | RFS MISS FAYE F62

RYDEEN FARMS

Black | Homo Polled | PB SM | Cow

BD: 3/10/18 | Tattoo: F62 | ASA#: 3462240 | Adj. BW: 95 | Adj. WW: 683

REMINGTON LOCK N LOAD54U

SIRE ELLINGSON LOAD UP B4022

BRANT R17K MS TOP SHELF

MR NLC SUPERIOR S6018

DAM X72

RF SIGRID S25

PROJECTED EPDS	
CE	13.9
BW	-0.1
WW	69.1
YW	100.6
MCE	6.7
MILK	27.7
MWW	62.2

EPD	CE	BW	WW	YW	ADG	MCE	MILK	MWW	STAY	DOC	CW	YG	MARB	BF	REA	API	TI
7.1	3.0	69.7	103.6	0.21	2.8	24.8	59.6	17.7	13.2	31.7	-0.50	-0.24	-0.114	0.96	105.6	62.1	
%								25	25	15	35	30			20		

- Dam has had 7 natural calves with a 365 day interval
- Dam's calves ratios, WW 106 (7), YW 103 (6)
- Ultrasound predicts March 23 calf (likely AI calf)
- AI'd on 6/11/19 to 49er, PE to Next Level 6/16-8/12



LOT 83



84 | RFS MISS FANNY F69

RYDEEN FARMS Homo Black | Polled | 3/4 SM 1/4 AN | Cow
 BD: 3/10/18 | Tattoo: F69 | ASA#: 3462247 | Adj. BW: 84 | Adj. WW: 559

SIRE 3C W/C RIGHT TRACK W9462
W/C WIDE TRACK 694Y
 MISS WERNING 694S

DAM K C F BENNETT ABSOLUTE
BRANT/RFS CINDER C520A
 BRANT AMELIA A52

PROJECTED EPDS	
CE	13.1
BW	0.0
WW	67.7
YW	107.1
MCE	4.9
MILK	12.8
MWW	46.6

EPD	CE	BW	WW	YW	ADG	MCE	MILK	MWW	STAY	DOC	CW	YG	MARB	BF	REA	API	TI
9.1	2.3	65.7	101.6	0.22	1.9	18.8	51.6	14.4	9.5	41.2	-0.28	0.23	-0.070	0.74	116.4	66.8	
%											15	40		30	30		

- Dam is a beauty from the Brant herd
- The NightRide bull calf should be exceptional
- Ultrasound safe to AI, predicts March 4 bull calf
- AI'd on 5/23/19 to NightRide, PE to Next Level 6/16-8/12

86 | RFS MISS FRANCE F87

RYDEEN FARMS Homo Black | Polled | PB SM | Cow
 BD: 3/12/18 | Tattoo: F87 | ASA#: 3462265 | Adj. BW: 91 | Adj. WW: 701

SIRE REMINGTON LOCK N LOAD54U
ELLINGSON LOAD UP B4022
 BRANT R17K MS TOP SHELF

DAM MR NLC UPGRADE U8676
RFS MISS AGILE A37
 RF SKYE S15

PROJECTED EPDS	
CE	15.0
BW	0.6
WW	80.6
YW	124.1
MCE	7.9
MILK	21.5
MWW	61.7

EPD	CE	BW	WW	YW	ADG	MCE	MILK	MWW	STAY	DOC	CW	YG	MARB	BF	REA	API	TI
12.6	2.3	77.2	120.2	0.27	6.3	21.7	60.2	17.8	10.2	47.7	-0.51	-0.11	-0.118	1.15	125.6	71.8	
%		20	15	10	10	35		25			2	25			3		35

- Tremendous dam with 5 calves in a 361 day interval that all ratio over 100 for BW, WW and YW
- Dam has a D-Luxe bull calf in the sale (G128), Lot 34
- Ultrasound safe to AI, predicts a March 3 heifer
- AI'd on 5/22 to Direct Impact, PE to Next Level 6/16-8/12

85 | RFS MISS FARRAH F79

RYDEEN FARMS Homo Black | Homo Polled | 5/8 SM 3/8 AN | Cow
 BD: 3/11/18 | Tattoo: F79 | ASA#: 3462257 | Adj. BW: 93 | Adj. WW: 621

SIRE J BAR J NIGHTRIDE 225Z
CLRS CONSTITUTION 311 C
 CLRS AID XCELLENCE 311 A

DAM TNT PUNCH Y260
B130
 U80

PROJECTED EPDS	
CE	13.9
BW	1.2
WW	78.1
YW	134.9
MCE	8.8
MILK	23.4
MWW	62.3

EPD	CE	BW	WW	YW	ADG	MCE	MILK	MWW	STAY	DOC	CW	YG	MARB	BF	REA	API	TI
12.0	1.6	73.4	126.7	0.33	6.8	17.9	54.5	19.5	15.7	53.2	-0.26	0.33	-0.058	0.93	143.1	76.1	
%			20	5	1				10	10	2			40	10	15	20

- Great numbered 5/8 blood
- Dam is a great Punch cow that ratios WW 100 (4), YW 105 (3)
- Ultrasound safe to PE
- AI'd on 6/11 to Heisman, PE to Next Level 6/16-8/12



BRED HEIFERS

87 | RFS MISS FERN F116

RYDEEN FARMS | Homo Black | Homo Polled | 3/4 SM 1/4 AN | Cow
 BD: 3/15/18 | Tattoo: F116 | ASA#: 3462294 | Adj. BW: 90 | Adj. WW: 657

REMINGTON LOCK N LOAD54U
SIRE ELLINGSON LOAD UP B4022
 BRANT R17K MS TOP SHELF
 HART FINAL ANSWER 0048
DAM B213
 RFS MISS Z187

PROJECTED EPDS	
CE	13.7
BW	0.5
WW	76.6
YW	118.1
MCE	7.6
MILK	21.9
MWW	60.1

CE	BW	WW	YW	ADG	MCE	MILK	MWW	STAY	DOC	CW	YG	MARB	BF	REA	API	TI	
EPD	10.0	2.1	69.1	108.3	0.24	5.7	22.6	57.0	16.4	12.2	42.6	-0.32	0.08	-0.083	0.78	115.3	66.0
%		35	30	35			35	40	40	10	30		15	25			

- Dam is a really nice 1/2 blood that ratios WW 102 (4), YW 100 (3)
- Ultrasound safe to AI, predicts a March 4 bull
- AI'd on 5/23 to Direct Impact, PE to Next Level 6/16-8/12



LOT 87

88 | RFS MISS FIFI F128

RYDEEN FARMS | Homo Black | Homo Polled | PB SM | Cow
 BD: 3/16/18 | Tattoo: F128 | ASA#: 3462306 | Adj. BW: 88 | Adj. WW: 678

REMINGTON LOCK N LOAD54U
SIRE ELLINGSON LOAD UP B4022
 BRANT R17K MS TOP SHELF
 HTP SVF IN DEW TIME
DAM B47
 RF NEVA

PROJECTED EPDS	
CE	13.3
BW	1.4
WW	75.8
YW	120.7
MCE	7.7
MILK	23.5
MWW	61.4

CE	BW	WW	YW	ADG	MCE	MILK	MWW	STAY	DOC	CW	YG	MARB	BF	REA	API	TI	
EPD	10.8	2.0	68.8	98.2	0.18	4.7	18.2	52.6	19.1	11.8	30.0	-0.52	-0.24	-0.115	0.99	114.4	62.7
%	40							25	35	20				20			

- Dam has a Relevance bull calf in the sale (G148), Lot 45
- Ultrasound predicts early April calf
- AI'd on 5/23 to Next Level, PE to Next Level 6/16-8/12



COWS ON WINTER PASTURE – NO PAMPERING!

89 | RFS MISS FLORA F130

RYDEEN FARMS | Black | Homo Polled | PB SM | Cow
 BD: 3/16/18 | Tattoo: F130 | ASA#: 3462308 | Adj. BW: 84 | Adj. WW: 624

SVF ALLEGIANCE Y802
SIRE RFS CAPTAIN C21
 W15
 SRS RIGHT-ON 22R
DAM Y141
 RF SEASON S141

PROJECTED EPDS	
CE	15.8
BW	-0.3
WW	74.9
YW	111.8
MCE	7.5
MILK	22.0
MWW	59.3

CE	BW	WW	YW	ADG	MCE	MILK	MWW	STAY	DOC	CW	YG	MARB	BF	REA	API	TI	
EPD	14.2	0.6	65.7	95.6	0.19	5.4	22.7	55.4	17.3	13.0	30.9	-0.38	0.04	-0.092	0.74	131.3	69.8
%	10	25				40			20	40					30		

- Balanced EPD's
- Dam has a Prophet bull calf in the sale (G103), Lot 48
- Ultrasound safe to AI, predicts a March 3 heifer
- AI'd on 5/22 to Direct Impact, PE to Next Level 6/16-8/12



LOT 89

90 | RFS MISS FORTUNE F134

RYDEEN FARMS | Black | Homo Polled | PB SM | Cow
 BD: 3/17/18 | Tattoo: F134 | ASA#: 3462312 | Adj. BW: 97 | Adj. WW: 598

CCR GRAVITY 9064A
SIRE KBHR COMPASS C324
 KBHR Y142
 HTP SVF IN DEW TIME
DAM W67
 RF SAMARA S85

PROJECTED EPDS	
CE	14.2
BW	0.1
WW	70.6
YW	101.6
MCE	7.7
MILK	23.0
MWW	58.2

CE	BW	WW	YW	ADG	MCE	MILK	MWW	STAY	DOC	CW	YG	MARB	BF	REA	API	TI	
EPD	7.6	3.4	72.6	105.5	0.21	4.8	15.4	51.7	20.5	11.5	32.8	-0.34	0.15	-0.091	0.65	132.3	71.3
%			30	40				10	35	30		20			30	40	

- High marbling female
- Dam has had 10 natural calves with a 361 day interval
- Ultrasound predicts likely safe to AI, for a March 20 calf
- AI'd on 6/11 to 49er, PE to Next Level 6/16-8/12



MISERABLE 2019 HARVEST

BRED HEIFERS

91 | RFS MISS FRANNIE F136

RYDEEN FARMS

Homo Black | Polled | PB SM | Cow

BD: 3/17/18 | Tattoo: F136 | ASA#: 3462314 | Adj. BW: 83 | Adj. WW: 645

REMINGTON LOCK N LOAD54U

SIRE ELLINGSON LOAD UP B4022

BRANT R17K MS TOP SHELF

CCR WIDE RANGE 9005A

DAM BCLR MISS WIDE RNG C545

BCLR MS PAYLA P5

PROJECTED EPDS						
CE	14.3					
BW	-0.1					
WW	76.4					
YW	115.5					
MCE	7.0					
MILK	19.7					
MWW	57.8					

	CE	BW	WW	YW	ADG	MCE	MILK	MWW	STAY	DOC	CW	YG	MARB	BF	REA	API	TI
EPD	11.1	1.0	68.8	103.1	0.21	4.4	18.1	52.4	17.9	10.8	27.8	-0.55	-0.17	-0.109	1.12	118.8	66.0
%	35	35										10			5		

- Nice numbered female
- Dam is from the Bichler Ranch
- Ultrasound safe to AI, predicts a March 3 heifer
- AI'd on 5/22 to Direct Impact, PE to Next Level 6/16-8/12



LOT 91

92 | RFS MISS FLEUR F149

RYDEEN FARMS

Black | Homo Polled | 3/4 SM 1/4 AN | Cow

BD: 3/19/18 | Tattoo: F149 | ASA#: 3462327 | Adj. BW: 97 | Adj. WW: 733

CCR GRAVITY 9064A

SIRE KBHR COMPASS C324

KBHR Y142

HOOKS SHEAR FORCE 38K

DAM RFS MISS Z93

U64

PROJECTED EPDS						
CE	11.1					
BW	1.5					
WW	86.1					
YW	127.7					
MCE	6.7					
MILK	19.1					
MWW	62.0					

	CE	BW	WW	YW	ADG	MCE	MILK	MWW	STAY	DOC	CW	YG	MARB	BF	REA	API	TI
EPD	4.8	4.0	88.1	127.5	0.25	3.8	16.9	60.9	17.7	10.5	46.5	-0.39	0.18	-0.073	1.14	129.7	80.3
%			1	4	25			20	25		5	15		20	1	40	10

- Dam has had 6 natural calves with a 368 day interval
- Dam has a Proclamation bull calf in the sale (G139), Lot 124
- Ultrasound safe to AI, predicts a March 3 heifer
- AI'd on 5/22 to Direct Impact, PE to Next Level 6/16-8/12



LOT 92

93 | RFS MISS FLO F159

RYDEEN FARMS

Hetero Black | Homo Polled | PB SM | Cow

BD: 3/22/18 | Tattoo: F159 | ASA#: 3462338 | Adj. BW: 93 | Adj. WW: 651

CCR WIDE RANGE 9005A

SIRE BCLR WIDE LOAD C21-3

WS MOTHER LODE W21

RF DEWPOINT W78

DAM RFS MISS ACHIEVE A168

W53

PROJECTED EPDS						
CE	13.9					
BW	0.6					
WW	78.4					
YW	118.4					
MCE	7.2					
MILK	21.7					
MWW	60.8					

	CE	BW	WW	YW	ADG	MCE	MILK	MWW	STAY	DOC	CW	YG	MARB	BF	REA	API	TI
EPD	10.3	2.3	72.8	108.9	0.23	4.9	22.1	58.4	18.8	12.9	27.6	-0.56	-0.109	1.12	127.6	71.2	
%			30	30	35			35	30	20		10			5	40	40

- Balanced EPD's
- Dam's calves ratio WW 105 (5), YW 101 (4)
- Ultrasound safe to AI, predicts a March 4 calf
- AI'd on 5/23 to Direct Impact, PE to Next Level 6/16-8/12



BRED HEIFERS

94 | RFS MISS FRAN F167

RYDEEN FARMS

Homo Black | Homo Polled | PB SM | Cow

BD: 3/27/18 | Tattoo: F167 | ASA#: 3462346 | Adj. BW: 90 | Adj. WW: 661

REMINGTON LOCK N LOAD54U

SIRE ELLINGSON LOAD UP B4022

BRANT R17K MS TOP SHELF

HOOKS SHEAR FORCE 38K

DAM U4

RF SEASON S141

PROJECTED EPDS						
CE	11.6					
BW	2.1					
WW	77.7					
YW	109.0					
MCE	6.5					
MILK	22.6					
MWW	61.3					

	CE	BW	WW	YW	ADG	MCE	MILK	MWW	STAY	DOC	CW	YG	MARB	BF	REA	API	TI
EPD	11.0	1.5	63.5	90.5	0.17	5.0	21.3	53.0	18.0	12.7	22.6	-0.58	-0.13	-0.116	1.07	117.3	63.3
%	40								20			4			10		

- Dam has had 9 calves with a 366 day interval
- Dam's calves ratio BW 100 (9), WW 101 (9)
- Ultrasound safe to AI, predicts a March 22 calf
- AI'd on 6/13 to Cowboy Cut, PE to Next Level 6/16-8/12



LOT 94



Load Up is gone but, his legacy lives on in these beautiful breds.

95 | RFS MISS FEBE F182

RYDEEN FARMS

Black | Homo Polled | PB SM | Cow

BD: 4/4/18 | Tattoo: F182 | ASA#: 3462362 | Adj. BW: 85 | Adj. WW: 583

SIRE **ELLINGSON LOAD UP B4022**
 REMINGTON LOCK N LOAD54U
 BRANT R17K MS TOP SHELF
 MR NLC SUPERIOR S6018

DAM **X97**
 RF MISS J159

PROJECTED EPDS	
CE	12.7
BW	0.5
WW	72.6
YW	111.0
MCE	6.9
MILK	21.8
MWW	58.0

EPD	CE	BW	WW	YW	ADG	MCE	MILK	MWW	STAY	DOC	CW	YG	MARB	BF	REA	API	TI
	7.9	2.1	61.1	94.0	0.21	4.3	22.4	52.8	18.9	11.4	24.8	-0.49	-0.15	-0.117	0.81	112.8	60.2
%									30	40		40					

- Dam has sold many progeny in Vision Sales
- Ultrasound safe to AI, predicts a March 3 calf
- AI'd on 5/22 to Direct Impact, PE to Next Level 6/16-8/12

96 | RFS MISS FANCY F186

RYDEEN FARMS

Homo Black | Homo Polled | PB SM | Cow

BD: 4/7/18 | Tattoo: F186 | ASA#: 3462366 | Adj. BW: 87 | Adj. WW: 603

SIRE **ELLINGSON LOAD UP B4022**
 REMINGTON LOCK N LOAD54U
 BRANT R17K MS TOP SHELF
 HTP SVF IN DEW TIME

DAM **U51**
 RFS ISABELLA H86

PROJECTED EPDS	
CE	14.4
BW	0.0
WW	71.9
YW	107.2
MCE	7.3
MILK	19.9
MWW	55.8

EPD	CE	BW	WW	YW	ADG	MCE	MILK	MWW	STAY	DOC	CW	YG	MARB	BF	REA	API	TI
	11.3	1.1	59.7	86.4	0.17	5.1	18.6	48.4	17.7	13.7	23.3	-0.48	-0.14	-0.109	0.84	115.9	60.8
%		35								15							

- Dam has had 9 calves with a 367 day interval
- Ultrasound safe to AI, predicts a March 3 heifer
- AI'd on 5/22 to Direct Impact, PE to Next Level 6/16-8/12

98 | RFS MISS FREDIA F190

RYDEEN FARMS

Homo Black | Homo Polled | PB SM | Cow

BD: 4/8/18 | Tattoo: F190 | ASA#: 3462370 | Adj. BW: 97 | Adj. WW: 666

SIRE **ELLINGSON LOAD UP B4022**
 REMINGTON LOCK N LOAD54U
 BRANT R17K MS TOP SHELF
 KBHR Y068 HARLEY

DAM **B169**
 X78

PROJECTED EPDS	
CE	10.9
BW	2.4
WW	77.5
YW	128.0
MCE	5.9
MILK	24.7
MWW	63.4

EPD	CE	BW	WW	YW	ADG	MCE	MILK	MWW	STAY	DOC	CW	YG	MARB	BF	REA	API	TI
	6.0	4.0	72.3	112.8	0.25	1.0	20.6	56.7	19.1	12.5	39.1	-0.51	-0.27	-0.113	1.09	105.8	61.5
%			35	25	20				25	25	10	25			10		

- Out of a nice 3/4 blood who always brings home a good one
- Ultrasound predicts late March calf
- AI'd on 5/23 to Next Level, PE to Next Level 6/16-8/12, observed bred on 6/18

99 | RFS MISS FRANKIE F199

RYDEEN FARMS

Homo Black | Homo Polled | 5/8 SM 3/8 AN | Cow

BD: 4/14/18 | Tattoo: F199 | ASA#: 3462379 | Adj. BW: 89 | Adj. WW: 619

SIRE **KBHR COMPASS C324**
 CCR GRAVITY 9064A
 KBHR Y142
 ELLINGSON RIGHT ON W944

DAM **RFS MISS Z78**
 PAR JUDGES HEROINE

PROJECTED EPDS	
CE	11.7
BW	1.7
WW	77.7
YW	127.4
MCE	8.3
MILK	26.4
MWW	65.2

EPD	CE	BW	WW	YW	ADG	MCE	MILK	MWW	STAY	DOC	CW	YG	MARB	BF	REA	API	TI
	7.6	2.6	72.7	111.6	0.24	5.8	23.9	60.2	16.4	11.8	35.4	-0.26	0.21	-0.058	0.68	119.2	70.2
%			20	25	35		35	20	40		30		40	40			

- Dam has a High Road bull calf in the sale (G170), Lot 30
- Ultrasound predicts early April calf
- AI'd on 5/23 to Next Level, PE to Next Level 6/16-8/12



LOT 96

97 | RFS MISS FELICE F187

RYDEEN FARMS

Black | Homo Polled | PB SM | Cow

BD: 4/7/18 | Tattoo: F187 | ASA#: 3462367 | Adj. BW: 88 | Adj. WW: 727

SIRE **ELLINGSON LOAD UP B4022**
 REMINGTON LOCK N LOAD54U
 BRANT R17K MS TOP SHELF
 MR NLC SUPERIOR S6018

DAM **X81**
 RF MISS J82

PROJECTED EPDS	
CE	12.6
BW	1.5
WW	77.9
YW	128.4
MCE	7.9
MILK	25.5
MWW	64.4

EPD	CE	BW	WW	YW	ADG	MCE	MILK	MWW	STAY	DOC	CW	YG	MARB	BF	REA	API	TI
	9.5	2.2	73.1	113.7	0.25	5.0	22.2	58.7	20.4	12.4	38.7	-0.58	-0.30	-0.123	1.22	115.3	64.6
%			30	20	20			30	10	25	15	4		20	2		

- Dam has had 7 calves with a 369 day interval
- Dam's calves ratio WW 106 (7), YW 105 (5)
- Ultrasound predicts mid-April calf
- AI'd on 5/22 to Direct Impact, PE to Next Level 6/16-8/12



100 | RFS MISS FLOWER F203

RYDEEN FARMS

Homo Black | Homo Polled | 3/4 SM 1/4 CS | Cow

BD: 4/22/18 | Tattoo: F203 | ASA#: 3462383 | Adj. BW: 95 | Adj. WW: 653

REMINGTON LOCK N LOAD54U

SIRE ELLINGSON LOAD UP B4022

BRANT R17K MS TOP SHELF

MR NLC SUPERIOR S6018

DAM X78

RFS MISS T10

PROJECTED EPDS	
CE	11.2
BW	1.5
WW	78.0
YW	119.4
MCE	5.6
MILK	20.6
MWW	59.5

EPD	CE	BW	WW	YW	ADG	MCE	MILK	MWW	STAY	DOC	CW	YG	MARB	BF	REA	API	TI
	4.9	4.0	71.9	110.8	0.24	1.6	19.9	55.8	17.6	12.7	40.0	-0.52	-0.19	-0.118	1.09	105.2	62.9
%			25	25	35				25	30	15	2		3	2		

- Out of a fertile, hard working _ blood dam
- Ultrasound safe to AI, predicts a March 3 heifer
- AI'd on 5/22 to Direct Impact, PE to Next Level 6/16-8/12



LOT 100

101 | RFS MISS FAVOR F209

RYDEEN FARMS

Black | Homo Polled | 3/4 SM 1/4 AN | Cow

BD: 4/26/18 | Tattoo: F209 | ASA#: 3462389 | Adj. BW: 96 | Adj. WW: 605

REMINGTON LOCK N LOAD54U

SIRE ELLINGSON LOAD UP B4022

BRANT R17K MS TOP SHELF

TNT AXIS X307

DAM B32

Y66

PROJECTED EPDS	
CE	13.0
BW	1.2
WW	70.3
YW	109.3
MCE	7.0
MILK	20.3
MWW	55.4

EPD	CE	BW	WW	YW	ADG	MCE	MILK	MWW	STAY	DOC	CW	YG	MARB	BF	REA	API	TI
	8.0	2.7	69.1	106.8	0.24	3.8	19.0	53.5	18.9	12.0	34.0	-0.42	-0.11	-0.087	0.96	117.3	64.9
%			35	35	35				15	40	35	10		15	5		

- Neat 3/4 blood
- Ultrasound safe to AI, predicts a late March calf
- AI'd on 6/10 to Best Man, PE to Next Level 6/16-8/12



LOT 101

102 | RFS MISS FLIRTY F210

RYDEEN FARMS

Black | Homo Polled | PB SM | Cow

BD: 4/22/18 | Tattoo: F210 | ASA#: 3462390 | Adj. BW: 94 | Adj. WW: 628

CCR GRAVITY 9064A

SIRE KBHR COMPASS C324

KBHR Y142

SVF/NJC BUILT RIGHT N48

DAM BRANT AMELIA A52

BRANT MACHO MAE U215M

PROJECTED EPDS	
CE	11.8
BW	1.4
WW	81.1
YW	122.4
MCE	7.3
MILK	19.5
MWW	59.9

EPD	CE	BW	WW	YW	ADG	MCE	MILK	MWW	STAY	DOC	CW	YG	MARB	BF	REA	API	TI
	6.1	3.9	78.2	116.9	0.24	5.0	17.7	56.7	18.5	6.3	43.4	-0.44	0.03	-0.115	0.92	122.3	71.6
%			15	15	25				35		4				30		35

- Dam is from the Brant herd
- Ultrasound safe to AI, predicts a March 3 calf
- AI'd on 5/22 to Direct Impact, PE to Next Level 6/16-8/12

We encourage you to pick up your bred heifers as soon as possible. We prefer that they get home and settled in before calving.

BRED HEIFERS

103 | RFS MISS FOXY F218

RYDEEN FARMS

Homo Black | Homo Polled | PB SM | Cow

BD: 5/2/18 | Tattoo: F218 | ASA#: 3462398 | Adj. BW: 85 | Adj. WW: 656

REMINGTON LOCK N LOAD54U

SIRE ELLINGSON LOAD UP B4022

BRANT R17K MS TOP SHELF

HTP SVF IN DEW TIME

DAM W91

RF SCRUPLE S123

PROJECTED EPDS	
CE	13.8
BW	1.1
WW	73.9
YW	119.7
MCE	8.0
MILK	24.1
MWW	61.0

EPD	CE	BW	WW	YW	ADG	MCE	MILK	MWW	STAY	DOC	CW	YG	MARB	BF	REA	API	TI
	11.8	1.5	65.1	96.3	0.19	5.3	19.4	51.9	18.4	9.9	28.3	-0.47	-0.20	-0.111	0.84	116.2	62.3
%			30						35								

- Dam has had 9 calves in a 366 day interval
- Ultrasound safe to PE
- AI'd on 5/22 Direct Impact, PE to Next Level 6/16-8/12



LOT 103



104 | RFS MISS FAME F215

RYDEEN FARMS

Red | Homo Polled | PB SM | Cow

BD: 4/30/18 | Tattoo: F215 | ASA#: 3462395 | Adj. BW: 87 | Adj. WW: 607

R PLUS HARD ROCK 145X

SIRE ELLINGSON COMPLETE A358

ELLINGSON MS AMIGO X5

LBR CROCKETT R81

DAM W52

RF RAINBOW

PROJECTED EPDS	
CE	13.2
BW	1.3
WW	73.3
YW	109.6
MCE	7.5
MILK	18.7
MWW	55.2

	CE	BW	WW	YW	ADG	MCE	MILK	MWW	STAY	DOC	CW	YG	MARB	BF	REA	API	TI
EPD	8.4	2.8	75.1	107.3	0.20	4.9	15.7	53.2	19.0	13.7	26.8	-0.38	0.04	-0.084	0.76	126.1	70.9
%			20	35					30	15							40

- Dam has had 9 natural calves with a 370 day interval
- Ultrasound safe to AI date, predicts March 3 heifer
- AI'd on 5/22 to Best Man, PE to Next Level 6/16-8/12

105 | RFS F111

RYDEEN FARMS

Black | Homo Polled | PB SM | Cow

BD: 3/15/18 | Tattoo: F111 | ASA#: 3462289 | Adj. BW: 83 | Adj. WW: 620

SVF ALLEGIANCE Y802

SIRE RFS CAPTAIN C21

W15

KENCO/MF POWERLINE 204L

DAM RFS MISS T131

RFS EFFIE H83

PROJECTED EPDS	
CE	15.0
BW	-0.4
WW	74.4
YW	112.2
MCE	8.4
MILK	21.0
MWW	58.1

	CE	BW	WW	YW	ADG	MCE	MILK	MWW	STAY	DOC	CW	YG	MARB	BF	REA	API	TI
EPD	12.6	0.4	64.7	96.5	0.20	7.2	20.7	53.0	18.5	13.3	25.6	-0.40	-0.04	-0.089	0.76	127.1	67.1
%			20	20			20			35	15						40

- Ultrasound safe to AI date, predicts March 3 heifer
- AI'd on 5/22 to Direct Impact, PE to Next Level 6/16-8/12

106 | RFS MISS FASHION F109

RYDEEN FARMS

Red | Polled | PB SM | Cow

BD: 3/15/18 | Tattoo: F109 | ASA#: 3462287 | Adj. BW: 90 | Adj. WW: 613

GW REDESTINED 642X

SIRE RFS BULLETPROOF B42

RFS MISS Z119

TRAXS RUSHMORE X103

DAM RFS MISS ALMA A43

RFS MISS T18

PROJECTED EPDS	
CE	13.0
BW	1.2
WW	81.2
YW	132.1
MCE	8.7
MILK	23.7
MWW	64.2

	CE	BW	WW	YW	ADG	MCE	MILK	MWW	STAY	DOC	CW	YG	MARB	BF	REA	API	TI
EPD	10.2	1.7	79.6	121.0	0.26	6.6	18.5	58.3	19.3	13.8	52.6	-0.49	0.14	-0.104	1.29	140.5	79.2
%			10	10	15	30		35	25	15	1	40	20		1	15	10

- Great Bulletproof female
- Excellent carcass numbers
- Ultrasound safe to PE
- AI'd on 5/23 to Flint, PE to Next Level 6/16-8/12





LOT 107



LOT 108

107 | RFS MISS FINALIST F47

RYDEEN FARMS

Red | Homo Polled | PB SM | Cow

BD: 3/7/18 | Tattoo: F47 | ASA#: 3462225 | Adj. BW: 90 | Adj. WW: 482

GW REDESTINED 642X

SIRE RFS BULLETPROOF B42

RFS MISS Z119

HOOKS SHEAR FORCE 38K

DAM W6

RFS MILLIE JANE

PROJECTED EPDS							
CE	13.0						
BW	0.8						
WW	70.8						
YW	114.7						
MCE	8.3						
MILK	27.9						
MWW	63.2						

	CE	BW	WW	YW	ADG	MCE	MILK	MWW	STAY	DOC	CW	YG	MARB	BF	REA	API	TI
EPD	10.3	0.9	58.8	86.2	0.17	5.9	27.0	56.3	20.5	11.3	30.1	-0.48	0.16	-0.099	0.98	136.6	68.7
%		30				40	10		10	40			20		20	20	

- Beautiful Bulletproof female
- Dam has had 8 calves with a 366 day interval
- Ultrasound predicts a late March calf
- AI'd on 5/22 to Best Man, PE to Next Level 6/16-8/12

108 | RFS MISS FAMOUS F126

RYDEEN FARMS

Red | Homo Polled | PB SM | Cow

BD: 3/16/18 | Tattoo: F126 | ASA#: 3462304 | Adj. BW: 96 | Adj. WW: 671

WS PRIME TIME B6

SIRE CDI BIG TIME 297D

CDI MS IRENE 1B

ELLINGSON COMPLETE A358

DAM C170

W80

PROJECTED EPDS							
CE	13.0						
BW	1.6						
WW	84.0						
YW	134.2						
MCE	9.0						
MILK	24.7						
MWW	66.7						

	CE	BW	WW	YW	ADG	MCE	MILK	MWW	STAY	DOC	CW	YG	MARB	BF	REA	API	TI
EPD	10.2	2.4	85.3	125.2	0.25	7.2	20.6	63.2	17.9	8.9	38.4	-0.43	0.23	-0.101	0.94	142.6	83.7
%			3	5	20	20		15			15		10		25	10	2

- Excellent EPD profile
- Ultrasound safe to PE
- AI'd on 5/22 to Best Man, PE to Next Level 6/16-8/12

109 | RFS MISS FOCUS F118

RYDEEN FARMS

Red | Polled | PB SM | Cow

BD: 3/15/18 | Tattoo: F118 | ASA#: 3462296 | Adj. BW: 92 | Adj. WW: 577

WS PRIME TIME B6

SIRE CDI BIG TIME 297D

CDI MS IRENE 1B

RFS T46

DAM RFS MISS Z198

U206

PROJECTED EPDS							
CE	12.2						
BW	1.4						
WW	74.4						
YW	121.8						
MCE	8.3						
MILK	25.8						
MWW	62.9						

	CE	BW	WW	YW	ADG	MCE	MILK	MWW	STAY	DOC	CW	YG	MARB	BF	REA	API	TI
EPD	8.6	2.1	66.0	100.4	0.22	5.8	22.7	55.6	17.5	4.7	23.8	-0.41	0.11	-0.103	0.68	126.4	69.4
%						40	40	40					30				

- Dam has had 6 natural calves with a 370 day interval
- Ultrasound predicts an early April calf
- AI'd on 5/22 to Best Man, PE to Next Level 6/16-8/12

110 | RFS MISS FOREFRONT F221

RYDEEN FARMS

Red | Polled | PB SM | Cow

BD: 5/5/18 | Tattoo: F221 | ASA#: 3462401 | Adj. BW: 86 | Adj. WW: 588

R PLUS HARD ROCK 145X

SIRE ELLINGSON COMPLETE A358

ELLINGSON MS AMIGO X5

GW REDESTINED 642X

DAM B70

RF MISS L111

PROJECTED EPDS							
CE	11.1						
BW	1.7						
WW	77.3						
YW	121.9						
MCE	7.3						
MILK	22.4						
MWW	61.0						

	CE	BW	WW	YW	ADG	MCE	MILK	MWW	STAY	DOC	CW	YG	MARB	BF	REA	API	TI
EPD	6.5	2.6	71.8	100.7	0.18	3.8	16.0	51.8	15.3	12.3	36.3	-0.49	0.01	-0.120	0.92	114.2	68.6
%			35							25	20	40			30		

- Nicely made Complete daughter
- Ultrasound predicts a late March calf
- AI'd on 6/10 to Next Level, PE to Next Level 6/16-8/12

BRED HEIFERS

111 | RFS MISS GLAM DOLL G175

RYDEEN FARMS | Homo Black | Polled | PB SM | Open
 BD: 3/31/19 | Tattoo: G175 | ASA#: 3595989 | Adj. BW: 99 | Adj. WW: 755

SIRE KBHR NIGHTWATCH C114

CCR GRAVITY 9064A
 KBHR A202
 GFI RAMBLER J114

DAM U80

RFS MADELINE

	CE	BW	WW	YW	ADG	MCE	MILK	MWW	STAY	DOC	CW	YG	MARB	BF	REA	API	TI
EPD	9.3	3.2	75.1	114.3	0.25	5.9	21.8	59.3	20.2	10.6	42.4	-0.40	0.05	-0.084	1.03	131.3	72.2
%			20	20	20	40		30	15		5				15	30	35

- Dam has had 10 natural calves
- All 10 calves ratio 106 (10) WW
- Dam is top 1% for Stay

112 | RFS MISS GABBY G187

RYDEEN FARMS | Black | Homo Polled | 5/8 SM 9/32 AN 3/32 AR | Open
 BD: 4/4/19 | Tattoo: G187 | ASA#: 3596001 | Adj. BW: 87 | Adj. WW: 631

SIRE ES D-LUXE DB21

W/C LOCK DOWN 206Z
 ES B21
 TNT PUNCH Y260

DAM B77

U65

	CE	BW	WW	YW	ADG	MCE	MILK	MWW	STAY	DOC	CW	YG	MARB	BF	REA	API	TI
EPD	12.2	0.4	71.0	112.9	0.26	7.8	27.2	62.6	18.9	9.4	45.3	-0.26	0.21	-0.067	0.76	134.7	73.3
%			30	20	20	30	15	10	15		10			30	25	30	35

- 5/8 blood
- Double digit calving ease
- Dam ratios 105 (4) BW, 103 (4) WW

113 | RFS MISS GIGI G185

RYDEEN FARMS | Black | Polled | 3/4 SM 3/16 AN 1/16 AR | Open
 BD: 4/3/19 | Tattoo: G185 | ASA#: 3595999 | Adj. BW: 93 | Adj. WW: 653

SIRE ES D-LUXE DB21

W/C LOCK DOWN 206Z
 ES B21
 TRIPLE C INVASION R47K

DAM RS MISS INVASION U102

SF BLK NIRVANA 414

	CE	BW	WW	YW	ADG	MCE	MILK	MWW	STAY	DOC	CW	YG	MARB	BF	REA	API	TI
EPD	12.9	1.1	70.7	108.2	0.23	6.2	26.0	61.3	19.3	12.0	46.4	-0.30	0.14	-0.072	0.84	130.1	70.3
%			30	30	40		20	15	10	40	5	35		20	15	40	

- 3/4 blood
- Dam has had 10 natural calves with a 365 day interval
- Ratios 102 (10) BW, 102 (10) WW

114 | RFS MISS GLAMOUR G107

RYDEEN FARMS | Black | Homo Polled | 3/4 SM 1/4 AN | Open
 BD: 3/18/19 | Tattoo: G107 | ASA#: 3595922 | Adj. BW: 92 | Adj. WW: 690

SIRE ES D-LUXE DB21

W/C LOCK DOWN 206Z
 ES B21
 KBHR Y068 HARLEY

DAM B46

W15

	CE	BW	WW	YW	ADG	MCE	MILK	MWW	STAY	DOC	CW	YG	MARB	BF	REA	API	TI
EPD	12.4	1.2	77.5	120.4	0.27	6.0	24.6	63.3	17.1	12.7	55.7	-0.26	0.12	-0.056	0.97	126.8	73.6
%			10	10	15		30	10	35	30	1			40	5		30

- 3/4 blood
- Top 10% WW and YW
- Ratio 105 WW



LOT 111



LOT 112



LOT 113



LOT 114

115 | RFS MISS GALA G105

RYDEEN FARMS | Homo Black | Homo Polled | 3/4 SM 1/4 AN | Open
 BD: 3/18/19 | Tattoo: G105 | ASA#: 3595920 | Adj. BW: 88 | Adj. WW: 714
 REMINGTON LOCK N LOADS4U

SIRE ELLINGSON LOAD UP B4022
 BRANT R17K MS TOP SHELF

DAM D12
 RFS MISS BOSNIA B189

	CE	BW	WW	YW	ADG	MCE	MILK	MWW	STAY	DOC	CW	YG	MARB	BF	REA	API	TI
EPD	11.3	1.3	67.7	106.1	0.24	5.8	21.8	55.6	18.0	11.7	41.5	-0.36	-0.03	-0.068	1.00	115.8	63.9
%		40	35	35					25		15	20		30	4		

- 3/4 blood
- Dam is a 1/2 blood out of the popular Bismarck Angus bull



LOT 115

116 | RFS MISS GINNY G94

RYDEEN FARMS | Homo Black | Homo Polled | 5/8 SM 3/8 AN | Open
 BD: 3/17/19 | Tattoo: G94 | ASA#: 3595909 | Adj. BW: 86 | Adj. WW: 712
 GW NATIONAL 231C

SIRE KBHR NEXT LEVEL E206
 KBHR C095

DAM D68
 RFS MISS ALASKA A95

	CE	BW	WW	YW	ADG	MCE	MILK	MWW	STAY	DOC	CW	YG	MARB	BF	REA	API	TI
EPD	11.4	1.1	80.1	130.1	0.31	4.8	27.0	67.0	15.5	13.7	53.3	-0.32	0.36	-0.055	1.12	138.4	82.1
%		10	3	3			15	3		20	2	30	40	40	1	20	5

- 5/8 blood
- Top 3% of the breed for WW, YW and ADG
- Out of a 2nd calf heifer



LOT 116

117 | RFS MISS GRETTEL G93

RYDEEN FARMS | Black | Homo Polled | 3/4 SM 1/4 AN | Open
 BD: 3/17/19 | Tattoo: G93 | ASA#: 3595908 | Adj. BW: 85 | Adj. WW: 717
 GW NATIONAL 231C

SIRE KBHR NEXT LEVEL E206
 KBHR C095

DAM RFS MISS ARIZONA A111
 X97

	CE	BW	WW	YW	ADG	MCE	MILK	MWW	STAY	DOC	CW	YG	MARB	BF	REA	API	TI
EPD	11.3	1.5	77.9	127.5	0.31	6.5	25.8	64.7	18.2	13.1	47.4	-0.33	0.15	-0.072	0.96	130.6	75.0
%			10	4	3		20	10	20	25	4	25		20	5	35	25

- 3/4 blood
- Top 10% WW, top 4% YW



LOT 117

118 | RFS MISS GISELLE G43

RYDEEN FARMS | Homo Black | Homo Polled | 5/8 SM 3/8 AN | Open
 BD: 3/9/19 | Tattoo: G43 | ASA#: 3595856 | Adj. BW: 91 | Adj. WW: 732
 GW NATIONAL 231C

SIRE KBHR NEXT LEVEL E206
 KBHR C095

DAM D163
 RFS MISS ASTRID A112

	CE	BW	WW	YW	ADG	MCE	MILK	MWW	STAY	DOC	CW	YG	MARB	BF	REA	API	TI
EPD	10.8	1.5	80.3	134.1	0.34	7.4	25.8	65.8	17.3	13.6	58.8	-0.21	0.24	-0.042	0.96	134.3	78.3
%			5	2	1	35	20	5	30	20	1				5	30	15

- 5/8 blood
- Top 5% WW, top 2% YW
- Ratios 111 WW



LOT 118

OPEN HEIFERS

119 | RFS MISS GRACIE G208

RYDEEN FARMS Red | Homo Polled | PB SM | Open
 BD: 4/12/19 | Tattoo: G208 | ASA#: 3596022 | Adj. BW: 89 | Adj. WW: 639

WS ALL ABOARD B80
SIRE KBHR KINGSMAN E144
 KBHR Z041
 TRAXS RUSHMORE X103
DAM RFS MISS Z87
 RFS MICHELLE

	CE	BW	WW	YW	ADG	MCE	MILK	MWW	STAY	DOC	CW	YG	MARB	BF	REA	API	TI
EPD	13.3	1.0	73.7	107.1	0.21	7.3	15.5	52.3	18.1	14.8	40.3	-0.53	0.03	-0.133	1.01	134.2	73.7
%	15	35	25	35		20			40	10	10	20		10	15	25	25

- Purebred
- Top 25% WW, top 35% YW
- Top 25% API and TI

120 | RFS MISS GEORGIA G160

RYDEEN FARMS Red | Homo Polled | PB SM | Open
 BD: 3/25/19 | Tattoo: G160 | ASA#: 3595974 | Adj. BW: 92 | Adj. WW: 637

WS ALL ABOARD B80
SIRE KBHR KINGSMAN E144
 KBHR Z041
 ELLINGSON COMPLETE A358
DAM C117
 Y67

	CE	BW	WW	YW	ADG	MCE	MILK	MWW	STAY	DOC	CW	YG	MARB	BF	REA	API	TI
EPD	10.8	1.9	77.4	105.4	0.17	6.3	14.8	53.5	19.1	16.6	30.6	-0.49	0.11	-0.121	0.85	135.5	75.7
%	40		15	40		35			25	2	40	40	30	20		20	20

- Purebred
- Top 20% API and TI

121 | RFS MISS GLORY G115

RYDEEN FARMS Red | Homo Polled | PB SM | Open
 BD: 3/19/19 | Tattoo: G115 | ASA#: 3595930 | Adj. BW: 86 | Adj. WW: 642

WS ALL ABOARD B80
SIRE KBHR KINGSMAN E144
 KBHR Z041
 TNT GUNNER N208
DAM X14
 RF RHEA

	CE	BW	WW	YW	ADG	MCE	MILK	MWW	STAY	DOC	CW	YG	MARB	BF	REA	API	TI
EPD	13.1	0.3	67.6	93.4	0.16	8.5	19.2	53.0	18.6	15.8	23.2	-0.45	0.04	-0.115	0.67	132.7	70.6
%	15	20				10			35	3						30	40

- Purebred
- Dam has raised 8 natural calves with ratio of 103 (8) BW

122 | RFS MISS GINA G85

RYDEEN FARMS Red | Homo Polled | PB SM | Open
 BD: 3/17/19 | Tattoo: G85 | ASA#: 3595900 | Adj. BW: 86 | Adj. WW: 710

WS ALL ABOARD B80
SIRE KBHR KINGSMAN E144
 KBHR Z041
 ELLINGSON COMPLETE A358
DAM C28
 Y142

	CE	BW	WW	YW	ADG	MCE	MILK	MWW	STAY	DOC	CW	YG	MARB	BF	REA	API	TI
EPD	11.7	1.2	80.7	113.2	0.20	7.7	16.6	56.9	19.4	12.6	37.7	-0.50	0.09	-0.121	0.97	139.6	78.6
%	30	40	10	20		15			20	25	15	30	30	20	20	15	10

- Purebred
- Top 15% API, top 10% TI



LOT 119



LOT 120



LOT 121



LOT 122

REFERENCE SIRES



LCDR IMPACT 134F

	CE	BW	WW	YW	ADG	MCE	MILK	MWW	STAY	DOC	CW	YG	MARB	BF	REA	SHR	API	TI
EPD	12.7	1.7	93.0	142.9	0.31	7.5	21.7	68.1	15.4	16.0	57.7	-0.41	0.44	-0.081	1.27	-0.38	158.2	95.4
%	20	50	1	1	2	15	50	3	80	3	1	80	1	90	1	25	2	1

Meet our new herd sire, LCDR Impact 134F. He was one of the most exciting yearling bulls of the 2019 season. He continues to impress us! Watch for his progeny in our 2021 Genetics With Vision Sale!

PUREBRED SIMMENTAL REFERENCE SIRES

Name	ASA #	Sire x Dam	Breeds	CE	BW	WW	YW	ADG	MCE	Milk	MW	API	TI
BBS TRUE JUSTICE B10	2878160	BDV TRUE GRIT 11X x BBS MISS JUSTICE Z7	PB SM	12.1	1.0	79.8	124.1	0.28	7.9	34.4	74.2	146.6	83.0
BCLR WIDELOAD C21-3	3071312	CCR WIDE RANGE 9005A x WS MOTHER LODGE W21	PB SM	9.8	2.3	87.5	133.2	0.29	5.4	14.0	57.7	131.5	81.2
ELLINGSON LOAD UP B4022	2915402	REMINGTON LOCK N LOADS4U x BRANT R17K MS TOP SHELF	PB SM	10.5	2.0	62.8	100.2	0.23	4.1	19.8	51.1	109.0	59.2
HOOK'S BEACON 56B	2854180	HOOKS SHEAR FORCE 38K x HOOKS ZAFIRAH 41Z	PB SM	17.4	-2.6	77.9	115.1	0.23	13.1	20.8	59.7	183.3	95.9
IR IMPERIAL D948	3210738	IR IMPERIAL B772 x IR MS DUAL FOCUS W086	PB SM	19.3	-3.0	59.8	84.5	0.15	11.5	27.4	57.2	175.2	85.5
KBHR HIGH ROAD E283	3312276	HOOK'S BEACON 56B x WS MISS SUGAR C4	PB SM	15.9	-0.4	92.2	142.9	0.32	11.7	26.6	72.7	174.2	100.8
KBHR KINGSMAN E144	3312138	WS ALL ABOARD B80 x KBHR Z041	PB SM	15.6	1.4	89.1	126.1	0.23	8.8	17.1	61.6	144.4	86.0
RFS BULLETPROOFB42	2930104	GW REDESTINED 642X x RFS MISS Z119	PB SM	7.7	2.5	89.4	135.2	0.29	4.5	21.5	66.2	141.5	84.5
RFS CAPTAIN C21	3040591	SVF ALLEGIANCE Y802 x W15	PB SM	18.2	-0.5	76.3	109.6	0.21	10.0	17.0	55.1	140.2	77.7
SVF ALLEGIANCE Y802	2638036	MR NLC UPGRADE U8676 x DOUBLE R MISS 29G T18	PB SM	12.4	2.3	94.6	139.6	0.28	6.8	13.5	60.8	114.7	82.6
WS ALL ABOARD B80	2852207	WS ALL-AROUND Z35 x WS LITTLE SISTER W37	PB SM	15.4	-0.2	98.8	145.3	0.29	8.8	12.1	61.4	158.6	98.5
WS ALL AROUND Z35	2675740	WS BEEF KING W107 x CDI MS HIGH ROLLER 39W	PB SM	14.8	0.3	95.1	144.0	0.31	7.8	18.1	65.6	150.7	90.4
WS PROCLAMATION E202	3254156	CCR COWBOY CUT 5048Z x WS MISS SUGAR C4	PB SM	16.6	0.9	94.5	143.1	0.30	11.3	29.3	76.5	161.2	94.9

PUREBRED ANGUS REFERENCE SIRES (ASA EPDS)

Name	ASA #	Sire x Dam	Breeds	CE	BW	WW	YW	ADG	MCE	Milk	MW	API	TI
CONNELY CONFIDENCE PLUS	3174651	CONNELY CONFIDENCE 0100 x ELBANNA OF CONANGA 1209	PB AN	17.5	-2.1	79.3	142.0	0.39	9.8	25.4	64.9	154.4	87.4
GAR MOMENTUM	2873578	G A R PROGRESS x G A R BIG EYE 1770	PB AN	19.6	-2.1	67.3	108.3	0.26	8.2	33.8	67.3	186.3	92.8
GAR PROPHET	2545802	C R A BEXTOR 872 5205 608 x G A R OBJECTIVE 1885	PB AN	16.8	-0.9	82.2	133.4	0.32	11.7	27.7	68.7	157.6	94.0
GAR RELEVANCE	3097253	G A R PROPHET x G A R PROGRESS N1401	PB AN	20.1	-1.7	67.2	114.0	0.29	11.3	33.6	67.1	175.2	91.8

SIMANGUS REFERENCE SIRES

Name	ASA #	Sire x Dam	Breeds	CE	BW	WW	YW	ADG	MCE	Milk	MW	API	TI
CCR BOULDER 1339A	2880390	HOOVER DAM x CCR MS L TAYLOR 1339Y	1/2SM1/2AN	15.2	-1.7	67.0	105.5	0.24	9.0	21.7	55.1	159.7	84.6
CDI 49ER 257D	3152330	TJ MAIN EVENT 503B x CDI MS YESTERDAY 29B	3/4 SM 1/4 AN	20.7	-3.2	68.5	97.6	0.18	10.6	30.5	64.7	148.4	79.8
CDI BIG TIME 297D	3152402	WS PRIME TIME B6 x CDI MS IRENE 1B	3/4 SM 1/8 AN 1/8 AR	13.9	0.5	88.3	133.0	0.28	8.2	22.4	66.5	172.4	93.4
CLRS CONSTITUTION 311C	2984470	J BAR J NIGHTRIDE 225Z x CLRS AID XCELLENCE 311 A	5/8 SM 3/8 AN	14.8	1.1	82.2	139.7	0.36	7.4	2.7	43.7	157.7	88.8
ES D-LUXE DB21	3185499	W/C LOCK DOWN 206Z x ES B21	1/2 SM 3/8 AN 1/8 AR	14.1	-1.3	78.2	124.4	0.29	9.3	28.6	67.6	140.9	82.7
KBHR NEXT LEVEL E206	3312199	GW NATIONAL 231C x KBHR C095	1/2 SM 1/2 AN	15.7	0.7	82.7	143.1	0.38	10.7	28.8	70.1	164.0	92.5
KBHR NIGHT WATCH C114	3047465	CCR GRAVITY 9064A x KBHR A202	3/4 SM 1/4 AN	11.9	1.9	73.9	114.9	0.26	8.8	24.7	61.6	134.3	75.7

Catalog designed by

RYDEEN FARMS

**47499 199TH AVENUE
CLEARBROOK, MN 56634**



First Class | Postal Carrier: Please Do Not Delay Dated Material

