

Genetics with

VISION

NEW DATE + TIME!
SATURDAY, FEBRUARY 9, 2019 / 2:00 PM
AT THE FARM IN CLEARBROOK, MN

RYDEEN FARMS
21ST ANNUAL PRODUCTION SALE
SIMMENTAL & SIMANGUS

RYDEEN FARMS

Dear Cattle Men and Women

Welcome to our 21st Annual Vision Bull and Female Sale and our 40th year of selling breeding livestock! We are pleased to invite you to our farm in Clearbrook, Minnesota. Thanks so much for your interest and confidence in our program.

The growing season was a challenging one. April was cool and planting decisions had to be changed due to multiple delays. The crops did catch up and yields were good, but, we experienced multiple hail storms, a tornado and then snow on October 6. We are grateful we were able to harvest what we could, but, were unable to get all of our harvesting done, with some corn still in the fields.

Our farm experienced the worst natural disaster in its 121 years. On August 27 a tornado ripped through our farm yard destroying our calving barn, new bull development barn, and hay shed. We were attending the Fall Focus and the American Simmental Association's 50th anniversary in Bozeman, MT when we received the call from the sheriff's department. So very grateful no one was hurt and no animals died. Thanks to all of you for your calls, texts and other messages of support. It really is appreciated!

We experienced a significant loss in 2018 with the unexpected death of our lifelong friend, neighbor and fellow Simmental breeder, David Engebretson. He truly enjoyed producing quality cattle and loved the Simmental breed. We shared a lot together and he will be missed by so many. A reminder that life is precious and the future is uncertain.

The spring bull calves were weaned in early September and placed on a growing ration and never looked back. We started

with 124 yearling bulls this year and whittled the group down to 60 because we truly believe that each animal on our sale, from the first to the last, needs to offer genetic improvement, or, we shouldn't be selling it.

We continue to invest in the science—we participated in the Cow Herd Round Up through the American Simmental Association which means we parent verified every female in our herd and have genomic enhanced her EPDs. This ensures a higher level of reliability and accuracy for you, the buyer. Our approach continues to be to utilize the science as well as phenotype and performance in our bull selection.

Sire selection continues to be an art and a science. However, EPDs continue to improve and do aid in the selection process. The new EPDs established under the BOLT system have changed, but for the better. They are run weekly instead of twice a year, and they include data from 12 breed associations to help standardize values. They will take a little getting used to, but, we have listed the percentile ranking underneath the value so you can compare. All bulls and bred females in our offering with the GGP-LD logo has Genomic Enhanced-EPDs and is parent verified so you can feel confident in your purchasing decisions.

Feel free to leave your trailers at home. We are thrilled to move our sale to Saturday and a new time (2:00pm). We are happy to keep your bulls for you, grow them out, and semen test them before delivery. As always, we stand behind our product 100% and your satisfaction is guaranteed.

We invite you to come and view the cattle and our operation prior to sale day. We continue to strive to improve our cattle every year. We thank you for your past support and your friendship. We know an investment in genetics is an important decision and we do not take it lightly. Please let us know if there is anything we can do to help you in your selection process. Hope to see you soon!

Once again we will be utilizing DVAuction. Animals will be penned outside the sale facility for your viewing.

Paul Rydeen, Rydeen Farms

VIEW CATALOG, LINKS TO VIDEOS, AND ULTRASOUND DATA ONLINE AT WWW.RYDEENFARMS.COM



**The Rydeen Family
Chad, Claire, Lois, Paul, and Justis**

ALLIED
GENETIC RESOURCES

ASA
The
PERFORMANCE
RECORDS

ASA Performance

Advocate

RYDEEN FARMS 21ST ANNUAL PRODUCTION SALE

Genetics with **VISION**

NEW DATE + TIME!
SATURDAY, FEBRUARY 9, 2019 / 2:00 PM
AT THE FARM IN CLEARBROOK, MN

Located ½ mile north of Clearbrook on #5; 3 miles east on #4 and ½ mile south on 199th Ave.

Terms and Conditions: This sale is conducted under the standard terms and conditions adopted by the American Simmental Association. If you have any questions, please contact us.

Registration Papers: Registration papers will be transferred on all animals. Please inform the clerk of your ASA number.

Feeding Arrangements: If you are unable to take your bull home on sale day, we will feed them for free until April 1, 2019. The bulls we feed will be put in with our bulls and treated the same. Successful buyers are responsible for animals purchased sale day and we are not responsible if an animal is injured after purchase. We encourage you to purchase mortality insurance. We will be semen testing bulls left here as able based on schedules. If you are interested in having your animal tested, please let us know.

Trucking: We will assist buyers in coordinating and making the most economical hauling arrangements.

Herd Health: We have completed 6 years of whole herd Johnes testing and all dams of sale cattle tested negative in 2018.

Spring 2018 born bulls were vaccinated at birth with UltraBac 8, and InForce. They were vaccinated in the spring with Vista Once, and UltraBac 8 and MultiMin. Prior to weaning they were given Once IN, UltraBac 8 and In Force IN. At weaning they were given Covexin and MultiMin. In the fall they were given InForce3, Once INH and poured with Clean Up 2. They were repoured in December with Clean Up 2 and given MultiMin.

Aged bulls were vaccinated in the early spring of 2018 with Vista Once, Covexin 8, given MultiMin and poured with Ivermectin. Early summer were given UltraBac 8 and Long Range. In the fall of 2018, they were vaccinated with Once PMH IN, InForce, IN, UltraBac 8, MultiMin, and poured with Ivermectin. They were repoured in December with Ivermectin.

Bred heifers were vaccinated with UltraBac 8 and ViraShield 6L5, given MultiMin, LongRange and poured with Eprinex prior to breeding. The bred heifers were ultrasounded on 7/30/2018 and 11/27/2018 for pregnancy. In the fall of 2018 they were vaccinated with UltraBac 8, In Force 3, ScourBoss 9 poured with Clean Up II. Bred females are Bangs vaccinated and have had two doses of ScourBoss.

Open heifers were vaccinate with UltraBac 8, Inforce 3 and given MultiMin. They were vaccinated in the spring with Vista Once, UltraBac 8, and MultiMin. Prior to weaning they were given Once IN, InForce IN, Covexin. At weaning they were given Once IN, InForce IN, UltraBac 8 and poured with Clean Up 2. They are Bangs vaccinated.

Additional information: Ultrasound data will be available the day of the sale.

Semen Rights: We will retain 1/3 semen interest on all bulls sold in the sale unless specifically noted.

Livestock Insurance: Lindfors Insurance Agency will be available sale day, 218-435-6585.

Announcements: Announcements made sale day and from the auction block during the sale, take precedence over printed material in the catalog or other printed material associated with the sale. Anyone attending this sale attends at his or her own risk; we are not responsible for accidents, damages or stolen items.

SIMMENTAL + SIMANGUS

58 BLACK & RED YEARLING BULLS
15 18-MONTH-OLD BULLS
7 2-YEAR-OLD BULLS
30 BRED FEMALES
12 OPEN FEMALES

SATURDAY, FEBRUARY 9, 2019

9:00 a.m.

Cattle available for viewing

12:00 p.m.

Complimentary Lunch at Noon
At Rydeen Farms, Clearbrook, Minnesota

2:00 p.m.

Sale Begins

SALE DAY PHONES

Farm. 218-776-3338

Paul cell. 218-280-1916

Lois cell. 218-280-8196

Claire cell. 218-280-0384

Justis cell. 218-280-2032

View catalog, links to videos, and
ultrasound data online at
www.rydeenfarms.com

AUCTIONEER

Tracy Harl, Loup City, NE,
402-469-3852 cell

LODGING

Piper's Inn, Clearbrook, MN, 218-776-2323

SALE REPRESENTATIVES

Alex Acheson. 785-366-1185
Farm and Ranch Guide

Kelly Schmidt. 406-599-2395
Cattle Business Weekly

Luke Keller. 701-471-1142
Progressive Genetic Solutions

Marty Ropp. 406-581-7835
Allied Genetic Resources

Bill Zimmerman. 320-247-7561
American Simmental Association

Dustin Carter. 712- 898- 9972
Tri-State Livestock News

Justin Dikoff. 605-290-0635
DVAuction

DVAuction
Broadcasting Real-Time Auctions

**SALE BROADCASTED ONLINE
THROUGH DVAUCTION.**
Bid online at www.dvauction.com or go to
page 25 for more information.



KBHR COMPASS C324

REFERENCE SIRES



WS ALL-AROUND Z35



BBS TRUE JUSTICE B10 GENEX

PUREBRED SIMMENTAL REFERENCE SIRES

Name	ASA #	Sire x Dam	Breeds	CE	BW	WW	YW	ADG	MCE	Milk	MW	API	TI
BBS TRUE JUSTICE B10	2878160	BDV True Grit 11X x BBS Miss Justice Z7	PB SM	12.5	0.4	76.4	122.0	0.29	8.3	35.5	73.6	140.2	80.1
BCLR WIDE LOAD C21-3	3071312	CCR Wide Range 9005A x WS Mother Lode W21	PB SM	10.8	2.2	85.6	131.6	0.29	6.5	20.8	63.5	129.3	79.3
CLRS DIVIDEND 405D	3097854	CLRS After Shock 604 A x CLRS Bonnie 405 B	PB SM	11.6	-0.4	76.5	117.0	0.25	5.4	21.4	59.6	146.2	79.8
ELLINGSON COMPLETE A358	2791433	R Plus Hard Rock 145X x Ellingson Ms Amigo X5	PB SM	6.9	4.1	87.2	121.3	0.21	5.0	10.0	53.5	114.3	71.5
ELLINGSON LOAD UP B4022	2915402	Remington Lock N Load 54U x Brant R17K Ms Top Shelf	PB SM	11.4	1.6	62.4	104.1	0.26	3.9	22.3	53.4	114.4	59.8
ELLINGSON PATRIOT C520	3044542	WS Prime Beef Z8 x Ellingson Ms Dakota Z252	PB SM	9.4	2.1	83.2	127.2	0.28	5.1	21.8	63.3	147.6	82.0
HOOK'S BROADWAY 11B	2854437	MCM Top Grade 018X x Hook's Water Lily 89W	PB SM	3.5	3.7	80.5	124.7	0.28	3.7	25.1	65.3	133.3	78.7
RFS BULLETPROOF B42	2930104	GW Redestined 642X x RFS Miss Z119	PB SM	6.1	2.8	86.3	133.7	0.30	3.2	22.6	65.7	142.4	84.1
RFS CAPTAIN C21	3040591	SVF Allegiance Y802 x W15	PB SM	18.4	-0.6	75.5	107.6	0.20	11.0	17.7	55.4	144.1	78.1
SVF ALLEGIANCE Y802	2638036	Mr NLC Upgrade U8676 x Double R Miss 29G T18	PB SM	12.7	2.4	94.1	140.3	0.29	7.6	16.2	63.1	126.0	85.1
W/C WIDE TRACK 694Y	2588250	3C W/C Right Track W9462 x Miss Werning 6945	PB SM	6.3	4.9	76.9	120.3	0.27	-3.3	15.0	53.4	127.5	71.8
WS ALL ABOARD B80	2852207	WS All-Around Z35 x WS Little Sister W37	PB SM	15.2	-0.4	97.5	144.6	0.29	9.3	12.8	61.5	169.8	96.9
WS ALL-AROUND Z35	2675740	WS Beef King x CDI Ms High Roller 39W	PB SM	15.1	0.1	92.8	137.6	0.28	8.0	17.5	63.8	160.7	89.3

PUREBRED ANGUS REFERENCE SIRES (ASA EPDS)

Name	ASA #	Sire x Dam	Breeds	CE	BW	WW	YW	ADG	MCE	Milk	MW	API	TI
CONNELY CONFIDENCE PLUS	3174651	Connealy Confidence 0100 x Elbanna of Conanga 1209	PB AN	19.8	-2.7	80.3	142.5	0.39	11.6	27.6	67.7	158.2	87.9

SIMANGUS REFERENCE SIRES

Name	ASA #	Sire x Dam	Breeds	CE	BW	WW	YW	ADG	MCE	Milk	MW	API	TI
CDI BIG TIME 297D	3152402	WS Prime Time B6 x CDI Ms Irene 1B	3/4SM1/8AN1/8AR	14.3	0.5	90.6	139.7	0.31	8.4	21.9	67.2	171.0	92.4
CLRS CONSTITUTION 311 C	2984470	J Bar J Nightride 225Z x CLRS Aid Xcellence 311 A	5/8 SM 3/8 AN	12.6	1.1	79.0	130.6	0.32	6.6	14.7	54.1	151.6	87.3
J BAR J NIGHTRIDE 225Z	2628568	GW Premium Beef 021TS x J Bar J Miss ND 793X	5/8 SM 3/8 AN	16.9	-2.6	67.2	108.3	0.26	8.9	9.7	43.2	160.2	86.7
KBHR COMPASS C324	3047675	CCR Gravity 9064A x KBHR Y142	3/4 SM 1/4 AN	3.1	5.0	98.7	150.9	0.33	2.9	8.7	58.0	130.5	83.1

Catalog designed by





WS All Aboard B80

Homozygous Polled and Dilutor Free

We wanted to find a great red bull to use on our Complete and Bulletproof red females. All Aboard fit the bill. He is unique in that he has great calving ease as well as performance numbers. This is the second year we have used him and many of the breds in our sale are bred to him.

1

RFS FORCE F35

RYDEEN FARMS

Red | Homo Polled | PB SM | Bull
BD: 3/4/18 | Tattoo: F35 | ASA#: 3462213

SIRE WS ALL ABOARD B80



WS LITTLE SISTER W37

TNT 90 PROOF Z401

DAM D48

U1

ACT BW	86
ADJ WW	768
ADJ YW	1400
FRAME SC	6.0
ADG	3.98
WDA	3.43
ADJ SC	38.4

	CE	BW	WW	YW	ADG	MCE	MILK	MWW	STAY	DDC	CW	YG	MARB	BF	REA	API	TI
EPD	13.6	0.2	85.1	130.6	0.28	8.4	21.3	63.8	18.5	21.1	37.2	-0.46	0.25	-0.106	0.98	153.4	87.4
%	15	20	3	3	10	10		10	35	1	15		10		20	3	1

- Dam's a first calf heifer with ratios over 100 in BW, WW, YW
- Top 3 % API and Top 1% TI
- Calving ease and performance bull
- 3.98 ADG, Ratios over 100 for WW, YW



LOT 1

2

RFS FRISCO F98

RYDEEN FARMS

Red | Homo Polled | PB SM | Bull
BD: 3/13/18 | Tattoo: F98 | ASA#: 3462276

SIRE WS ALL ABOARD B80



WS LITTLE SISTER W37

TNT GUNNER N208

DAM Y63

U26

ACT BW	98
ADJ WW	796
ADJ YW	1296
FRAME SC	6.0
ADG	3.12
WDA	3.32
ADJ SC	37.9

	CE	BW	WW	YW	ADG	MCE	MILK	MWW	STAY	DDC	CW	YG	MARB	BF	REA	API	TI
EPD	10.3	1.0	83.9	121.7	0.24	6.1	20.8	62.7	20.5	14.9	42.7	-0.53	0.17	-0.119	1.14	145.5	82.9
%	50	35	4	10	25	35		15	10	10	5	20	20	45	4	10	3

- Dam's the best Gunner cow in the herd with great udder and top 1% for milk
- Great carcass numbered bull
- Top 10% API and Top 3% TI



LOT 2

3

RFS FLAME F124

RYDEEN FARMS

Red | Heterozygous Polled | PB SM | Bull
BD: 3/16/18 | Tattoo: F124 | ASA#: 3462302

SIRE WS ALL ABOARD B80



WS LITTLE SISTER W37

RFS T46

DAM RFS MISS Z119

RFS MISS T91

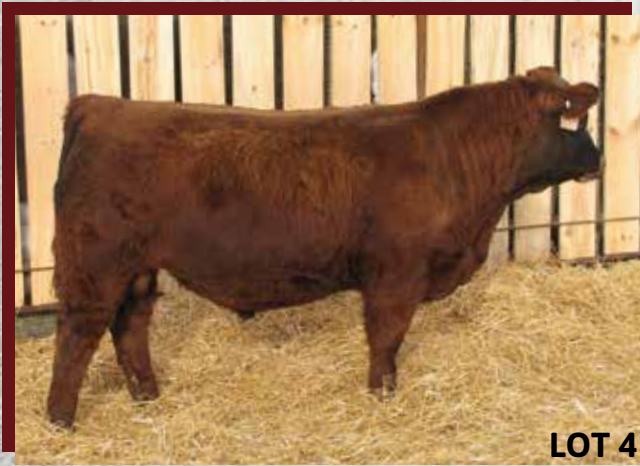
ACT BW	80
ADJ WW	840
ADJ YW	1383
FRAME SC	6.0
ADG	3.39
WDA	3.61
ADJ SC	38.0

	CE	BW	WW	YW	ADG	MCE	MILK	MWW	STAY	DDC	CW	YG	MARB	BF	REA	API	TI
EPD	15.4	0.0	80.8	123.9	0.27	9.2	18.2	58.6	19.9	14.8	36.8	-0.48	0.09	-0.100	1.08	148.4	81.0
%	4	15	10	10	10	4		35	15	10	15	45	30		10	5	5

- Maternal sib to RFS Bulletproof at Genex
- Top 5% API and TI
- Top 4% for CE without sacrificing performance
- Ratios 112 birth, 110 WW, 105 YW



LOT 3



LOT 4



LOT 5



LOT 6



LOT 7

4

RFS FUSION F97

RYDEEN FARMS

Red | Homo Polled | PB SM | Bull

BD: 3/13/18 | Tattoo: F97 | ASA#: 3462275

SIRE WS ALL ABOARD B80
 GGPLD WS LITTLE SISTER W37
 DAM RFS MISS Z15
 X73

ACT BW	87
ADJ WW	759
ADJ YW	1323
FRAME SC	6.0
ADG	3.52
WDA	3.41
ADJ SC	36.9

CE	BW	WW	YW	ADG	MCE	MILK	MWW	STAY	DOC	CW	YG	MARB	BF	REA	API	TI	
9.2	0.4	83.2	124.4	0.26	5.9	20.1	61.7	17.6	13.8	43.4	-0.53	0.21	-0.121	1.16	142.2	84.2	
%		20	4	10	15	40		20	50	15	4	20	15	20	3	10	2

- Dark, cherry red herd sire prospect
- Dam's a moderated framed, solid red beauty
- Great carcass numbers
- Top 10% for API and Top 2% TI

5

RFS FULLBACK F53

RYDEEN FARMS

Red | Homo Polled | PB SM | Bull

BD: 3/7/18 | Tattoo: F53 | ASA#: 3462231

SIRE WS ALL ABOARD B80
 GGPLD WS LITTLE SISTER W37
 DAM D154
 Y54

ACT BW	95
ADJ WW	848
ADJ YW	1436
FRAME SC	6.0
ADG	3.68
WDA	3.47
ADJ SC	40.5

CE	BW	WW	YW	ADG	MCE	MILK	MWW	STAY	DOC	CW	YG	MARB	BF	REA	API	TI
9.9	2.6	93.4	135.0	0.26	5.1	12.1	58.7	21.4	17.1	42.1	-0.52	0.12	-0.122	1.09	145.3	84.7
%		1	2	15			30	4	1	5	20	25	20	10	10	2

- Dam's a first calf (Complete) heifer
- Performance bull with great carcass
- Top 1% of breed for weaning, top 2% for yearling
- Big scrotal bull

6

RFS FORBES F157

RYDEEN FARMS

Red | Homo Polled | PB SM | Bull

BD: 3/22/18 | Tattoo: F157 | ASA#: 3462335

SIRE WS ALL ABOARD B80
 GGPLD WS LITTLE SISTER W37
 DAM X124
 35R
 RFS MICHELLE

ACT BW	96
ADJ WW	856
ADJ YW	1418
FRAME SC	6.0
ADG	3.51
WDA	3.66
ADJ SC	37.3

CE	BW	WW	YW	ADG	MCE	MILK	MWW	STAY	DOC	CW	YG	MARB	BF	REA	API	TI
9.9	1.3	83.6	123.6	0.25	4.8	23.9	65.6	21.5	16.1	44.7	-0.48	0.13	-0.126	0.98	144.6	81.6
%		40	4	10	20		30	10	3	3	45	25	20	20	10	4

- Dam's weaned 7 calves (all over 100 WW ratio)
- Balanced EPDs
- Ratios 112 for WW, 107 for YW

7

RFS FOREMOST F114

RYDEEN FARMS

Red | Homo Polled | PB SM | Bull

BD: 3/15/18 | Tattoo: F114 | ASA#: 3462292

SIRE WS ALL ABOARD B80
 GGPLD WS LITTLE SISTER W37
 DAM BBS TEDDY X10
 WHEATLAND RED TEDDY 457P
 BBS MISS TOPGUN U228

ACT BW	94
ADJ WW	825
ADJ YW	1219
FRAME SC	5.5
ADG	2.46
WDA	3.14
ADJ SC	38.0

CE	BW	WW	YW	ADG	MCE	MILK	MWW	STAY	DOC	CW	YG	MARB	BF	REA	API	TI
12.0	1.8	88.2	130.9	0.27	7.6	14.0	58.0	19.0	8.5	40.6	-0.54	0.06	-0.127	1.09	140.0	81.8
%		2	3	10	15		35	30		10	15	40	20	10	15	4

- Double digit calving ease with performance
- Little smaller frame
- Top 15% API and 4% TI
- Dam's an X model weaning 7 calves with 107 WW ratio



CDI Big Time 297D

Homozygous Polled and Dilutor Free

Big Time was our choice to be a pasture sire for our red herd, working well on heifers and cows. He is an out cross that also boasts great calving ease and maintains the frame score with performance we find ideal.

8

RFS FAVORITE F119

RYDEEN FARMS

Red | Homo Polled | PB SM | Bull

BD: 3/15/18 | Tattoo: F119 | ASA#: 3462297

WS PRIME TIME B6

SIRE CDI BIG TIME 297D



CDI MS IRENE 1B

DAM X9

TNT GUNNER N208

RF SISSY S12

ACT BW	96
ADJ WW	804
ADJ YW	1431
FRAME SC	6.5
ADG	3.93
WDA	3.70
ADJ SC	38.0

	CE	BW	WW	YW	ADG	MCE	MILK	MWW	STAY	DOC	CW	YG	MARB	BF	REA	API	TI
EPD	10.4	1.7	82.6	123.2	0.25	6.6	21.3	62.6	19.3	7.6	33.6	-0.41	0.06	-0.103	0.80	135.4	78.2
%	45	50	5	10	20	30		15	25		30		40			20	10

- Stud bull, dark red herd sire prospect
- Both dam and grand dam are great cows working in the herd
- 3.93 ADG, balanced EPDs
- Ratios 105 WW, 108 YW



LOT 8

9

RFS FELLOW F156

RYDEEN FARMS

Red | Homo Polled | PB SM | Bull

BD: 3/22/18 | Tattoo: F156 | ASA#: 3462334

WS PRIME TIME B6

SIRE CDI BIG TIME 297D



CDI MS IRENE 1B

DAM Y54

TNT GUNNER N208

RF PRECISE

ACT BW	92
ADJ WW	822
ADJ YW	1381
FRAME SC	6.5
ADG	3.50
WDA	3.59
ADJ SC	39.3

	CE	BW	WW	YW	ADG	MCE	MILK	MWW	STAY	DOC	CW	YG	MARB	BF	REA	API	TI
EPD	12.2	1.6	78.7	114.8	0.23	6.8	21.7	61.0	21.3	8.3	25.9	-0.43	0.22	-0.102	0.78	149.1	80.4
%	25	50	15	20	35	25	50	20	4				10			4	5

- Dam's an outstanding deep bodied, solid red brood cow
- Top 4% API, top 5% TI, with high marbling
- Double digit CE, and ratios 100 birth, 107 WW, 104 YW



LOT 9

10

RFS FINALIST F105

RYDEEN FARMS

Red | Homo Polled | 3/4 SM 3/16 AR 1/16 AN | Bull

BD: 3/14/18 | Tattoo: F105 | ASA#: 3462283

WS PRIME TIME B6

SIRE CDI BIG TIME 297D



CDI MS IRENE 1B

DAM Z34

GCF MR AMIGO

RF RAINBOW

ACT BW	88
ADJ WW	681
ADJ YW	1184
FRAME SC	5.5
ADG	3.16
WDA	3.09
ADJ SC	37.9

	CE	BW	WW	YW	ADG	MCE	MILK	MWW	STAY	DOC	CW	YG	MARB	BF	REA	API	TI
EPD	16.1	0.5	77.8	111.8	0.21	8.3	13.0	51.8	21.3	9.9	24.3	-0.24	0.33	-0.068	0.40	160.3	82.5
%	10	50	10	25		20			2			50	45	30		2	5

- Dam's dark red, easy keeping Z model cow
- High API and TI dark red, 3/4 blood
- Calving ease head and shoulder
- Top 2% stayability



LOT 10



LOT 11



LOT 12



LOT 13



LOT 14

11

RFS FLINT F96

RYDEEN FARMS

Red | Homo Polled | PB SM | Bull
BD: 3/13/18 | Tattoo: F96 | ASA#: 3462274

SIRE **CDI BIG TIME 297D**
GGPLD
DAM **B26**
WS PRIME TIME B6
CDI MS IRENE 1B
GW REDESTINED 642X
RFS MISS Z30

ACT BW	88
ADJ WW	829
ADJ YW	1287
FRAME SC	6.5
ADG	2.89
WDA	3.31
ADJ SC	38.9

CE	BW	WW	YW	ADG	MCE	MILK	MWW	STAY	DOC	CW	YG	MARB	BF	REA	API	TI
12.5	0.9	83.2	127.8	0.28	8.0	20.2	61.7	19.6	12.5	37.6	-0.43	0.27	-0.098	0.96	152.8	85.5
%	20	30	4	4	10	10	20	20	25	15	10			20	3	2

- Dam's a B model (weaned 3 in a 359 day interval)
- Top 3% API, top 2% TI
- Top 4% weaning and yearling
- Great carcass

12

RFS FOSTER F95

RYDEEN FARMS

Red | Homo Polled | PB SM | Bull
BD: 3/13/18 | Tattoo: F95 | ASA#: 3462273

SIRE **CDI BIG TIME 297D**
GGPLD
DAM **Z130**
WS PRIME TIME B6
CDI MS IRENE 1B
RFS T46
RBS RFS S 6

ACT BW	90
ADJ WW	874
ADJ YW	1338
FRAME SC	6.5
ADG	2.91
WDA	3.49
ADJ SC	37.9

CE	BW	WW	YW	ADG	MCE	MILK	MWW	STAY	DOC	CW	YG	MARB	BF	REA	API	TI
11.3	0.8	77.3	121.5	0.28	7.4	26.9	65.5	21.3	9.8	44.8	-0.42	-0.11	-0.098	1.01	132.1	73.1
%	35	30	15	10	10	20	15	10	4	3				15	30	30

- Dam's weaned 5 calves averaging @101 BW, 103 WW
- Balanced EPDs with calving ease and performance
- Ratios 101 birth, 114 WW, 101 YW

13

RFS FUTURE F123

RYDEEN FARMS

Red | Homo Polled | PB SM | Bull
BD: 3/15/18 | Tattoo: F123 | ASA#: 3462301

SIRE **CDI BIG TIME 297D**
GGPLD
DAM **B133**
WS PRIME TIME B6
CDI MS IRENE 1B
GW REDESTINED 642X
W61

ACT BW	84
ADJ WW	732
ADJ YW	1246
FRAME SC	5.0
ADG	3.24
WDA	3.19
ADJ SC	36.0

CE	BW	WW	YW	ADG	MCE	MILK	MWW	STAY	DOC	CW	YG	MARB	BF	REA	API	TI
10.3	0.2	74.1	114.9	0.26	6.3	26.6	63.6	20.7	8.1	27.5	-0.33	0.21	-0.079	0.66	146.5	79.2
%	50	20	25	20	15	35	15	10	10			15			10	10

- Dam's a dark red, moderate framed Redestined cow
- Top 10 % API and TI

14

RFS FAIRPLAY F145

RYDEEN FARMS

Red | Homo Polled | PB SM | Bull
BD: 3/18/18 | Tattoo: F145 | ASA#: 3462323

SIRE **CDI BIG TIME 297D**
GGPLD
DAM **C182**
WS PRIME TIME B6
CDI MS IRENE 1B
ELLINGSON COMPLETE A358
RF ROSALIA

ACT BW	97
ADJ WW	830
ADJ YW	1343
FRAME SC	6.5
ADG	3.23
WDA	3.33
ADJ SC	40.1

CE	BW	WW	YW	ADG	MCE	MILK	MWW	STAY	DOC	CW	YG	MARB	BF	REA	API	TI
9.4	2.8	86.0	129.6	0.27	5.8	19.6	62.6	19.9	8.2	38.7	-0.42	0.07	-0.101	0.90	135.9	79.2
%		3	3	10	40		15	15		15		35		35	20	10

- Dam's a 2nd calf Complete cow
- Grand dam weaned 9 @ 106 WW ratio
- High weaning, yearling numbers
- Great herd bull prospect



RFS Bulletproof B42

Homozygous Polled and Dilutor Free

Bulletproof was our high selling red bull in our 2015 sale. He has grown into a tremendous, out cross red herd sire and has been leased to Genex. We think his phenotype is excellent and his EPD's and carcass traits are superb.

15 | RFS FULL FORCE F127

RYDEEN FARMS

Red | Homo Polled | PB SM | Bull
BD: 3/16/18 | Tattoo: F127 | ASA#: 3462305

GW REDESTINED 642X

SIRE RFS BULLETPROOF B42

RFS MISS Z119

TRAXS RUSHMORE X103

DAM RFS MISS Z87

RFS MICHELLE

ACT BW	90
ADJ WW	803
ADJ YW	1359
FRAME SC	5.5
ADG	3.48
WDA	3.52
ADJ SC	38.0

	CE	BW	WW	YW	ADG	MCE	MILK	MWW	STAY	DOC	CW	YG	MARB	BF	REA	API	TI
EPD	9.4	2.1	78.6	120.8	0.26	5.3	21.6	60.8	20.0	14.1	54.6	-0.47	0.11	-0.103	1.24	137.1	77.1
%			15	10	15	50		20	15	10	1	50	30		1	20	15

- Dam's a Z model Rushmore cow
- Dam's bull calf, RFS Dudley sold to Austin Kindem in 2017
- Great carcass
- Ratios 101 birth, 105 WW, 103 YW



LOT 15

16 | RFS FRANKLIN F108

RYDEEN FARMS

Red | Homo Polled | PB SM | Bull
BD: 3/14/18 | Tattoo: F108 | ASA#: 3462286

GW REDESTINED 642X

SIRE RFS BULLETPROOF B42

RFS MISS Z119

35R

DAM W4

RF RIVER

ACT BW	94
ADJ WW	823
ADJ YW	1380
FRAME SC	6.0
ADG	3.48
WDA	3.55
ADJ SC	39.9

	CE	BW	WW	YW	ADG	MCE	MILK	MWW	STAY	DOC	CW	YG	MARB	BF	REA	API	TI
EPD	6.8	1.8	76.0	117.6	0.26	4.4	27.5	65.5	21.3	16.1	33.3	-0.46	0.25	-0.103	0.94	143.6	79.5
%			20	15	15		10	10	4	3	30		10		25	10	10

- Dam is dark red, deep bodied Red Radar (top 2% breed for milk)
- Dam weaned 8 calves @102 BW, 102 WW
- Top 10% API and TI, top 4% stay
- Ratios 108 weaning, 104 yearling



LOT 16

17 | RFS FORTE F113

RYDEEN FARMS

Red | Homo Polled | PB SM | Bull
BD: 3/15/18 | Tattoo: F113 | ASA#: 3462291

GW REDESTINED 642X

SIRE RFS BULLETPROOF B42

RFS MISS Z119

WS RED THUNDER W108

DAM WS MISS REDNECK Z159

WS MISS KGB U179

ACT BW	90
ADJ WW	845
ADJ YW	1496
FRAME SC	5.5
ADG	4.07
WDA	3.89
ADJ SC	44.0

	CE	BW	WW	YW	ADG	MCE	MILK	MWW	STAY	DOC	CW	YG	MARB	BF	REA	API	TI
EPD	9.4	2.6	76.1	118.7	0.27	5.7	31.2	69.2	18.3	12.6	48.9	-0.48	0.11	-0.099	1.22	132.2	76.0
%			20	15	10	45	2	2	40	25	1	45	30		2	30	20

- Dam was purchased as a bred from Wilkinson Farms
- Big ribeye numbers
- Ratios 101 birth, 110 weaning, 113 yearling
- ADG 4.07



LOT 17



Ellingson Complete A358

Homozygous Polled and Dilutor Free

Complete has really done a nice job for us. This dark red, 6 frame bull adds as much muscle, depth of body, with above average scrotal as any red sire we have used, either natural service or AI. His sons consistently wean at the top of the class. We are very pleased with his heifers and are offering many of them in our.



LOT 18



LOT 19



LOT 20

18

RFS FLASH F197

RYDEEN FARMS

Red | Homo Polled | PB SM | Bull

BD: 4/13/18 | Tattoo: F197 | ASA#: 3462377

SIRE **ELLINGSON COMPLETE A358**
 R PLUS HARD ROCK 145X
 ELLINGSON MS AMIGO X5
 GGPLD
 RFS T46
 DAM **RFS MISS ACOLYTE A173**
 X124

ACT BW	98
ADJ WW	881
ADJ YW	
FRAME SC	5.5
ADG	2.92
WDA	3.41
ADJ SC	42.5

	CE	BW	WW	YW	ADG	MCE	MILK	MWW	STAY	DOC	CW	YG	MARB	BF	REA	API	TI
EPD	6.3	3.4	73.7	108.9	0.22	3.9	23.2	60.0	19.1	15.8	30.0	-0.55	-0.21	-0.136	0.92	109.4	64.4
%			25	30	40		35	25	25	3	45	10		10	30		

- Dam's weaned 4 @ 108 WW ratio
- Young April 13 calf, adj. 205 day 881
- Balanced EPDs
- Big scrotal

19

RFS FORWARD F133

RYDEEN FARMS

Red | Homo Polled | PB SM | Bull

BD: 3/17/18 | Tattoo: F133 | ASA#: 3462311

SIRE **ELLINGSON COMPLETE A358**
 R PLUS HARD ROCK 145X
 ELLINGSON MS AMIGO X5
 GGPLD
 THSR BOMBARDIER U802
 DAM **RFS MISS ALUMNI A78**
 Y109

ACT BW	89
ADJ WW	738
ADJ YW	1204
FRAME SC	5.5
ADG	2.92
WDA	3.08
ADJ SC	40.1

	CE	BW	WW	YW	ADG	MCE	MILK	MWW	STAY	DOC	CW	YG	MARB	BF	REA	API	TI
EPD	10.5	2.7	75.6	104.9	0.18	7.7	12.3	50.1	15.3	9.5	31.4	-0.49	-0.15	-0.121	0.88	110.5	66.7
%	45		20	40		15					40	40		20	40		

- Dam's a solid red, Bombadier cow
- Nice dark red, homo polled herd bull prospect
- 40 cm scrotal

20

RFS FOREMAN F125

RYDEEN FARMS

Red | Homo Polled | PB SM | Bull

BD: 3/16/18 | Tattoo: F125 | ASA#: 3462303

SIRE **ELLINGSON COMPLETE A358**
 R PLUS HARD ROCK 145X
 ELLINGSON MS AMIGO X5
 GGPLD
 WS BEEF MAKER R13
 DAM **W80**
 RBS RF P87

ACT BW	105
ADJ WW	792
ADJ YW	1184
FRAME SC	5.5
ADG	2.44
WDA	2.99
ADJ SC	33.0

	CE	BW	WW	YW	ADG	MCE	MILK	MWW	STAY	DOC	CW	YG	MARB	BF	REA	API	TI
EPD	8.3	4.1	81.9	118.0	0.23	6.7	26.2	67.1	19.2	15.9	28.3	-0.52	0.07	-0.120	0.93	128.7	75.8
%			10	15	35	25	15	4	25	3		20	35	45	30	40	20

- Dam's a dark cherry red Beefmaker with a good udder
- Performance bull with great phenotype
- Good carcass



J Bar J Nightride 225Z

Homozygous Black and Homozygous Polled

For years we used calving ease black Angus bulls on our black heifers, then Nightride came along. He's a 5/8 bull that has been a superb heifer bull with great carcass data. He hits all the benchmarks we like to see.

21

RFS FOUR STAR F6

RYDEEN FARMS

Homo Black | Homo Polled | 1/2 SM 1/2 AN | Bull
BD: 2/23/18 | Tattoo: F6 | ASA#: 3462181

GW PREMIUM BEEF 021TS

SIRE J BAR J NIGHTRIDE 225Z



J BAR J MISS ND 793X

S A V BISMARCK 5682

DAM D10

B16

ACT BW	80
ADJ WW	627
ADJ YW	1227
FRAME SC	5.5
ADG	3.80
WDA	3.20
ADJ SC	37.9

	CE	BW	WW	YW	ADG	MCE	MILK	MWW	STAY	DOC	CW	YG	MARB	BF	REA	API	TI
EPD	13.6	1.5	75.7	114.8	0.24	7.5	24.8	62.6	18.0	12.2	27.9	-0.45	0.04	-0.081	1.01	134.8	75.3
%	30		15	20	35	30	25	10	25	40		5		15	3	30	25

- Dam's a beautiful first calf, SAV Bismarck lady
- Halfblood with calving ease and low birth wt.
- Heifer bull



LOT 21

22

RFS FINN F26

RYDEEN FARMS

Homo Black | Homo Polled | 5/8 SM 3/8 AN | Bull
BD: 3/2/18 | Tattoo: F26 | ASA#: 3462203

GW PREMIUM BEEF 021TS

SIRE J BAR J NIGHTRIDE 225Z



J BAR J MISS ND 793X

KNH SECURITY 258A

DAM D163

RFS MISS ASTRID A112

ACT BW	86
ADJ WW	706
ADJ YW	1300
FRAME SC	5.5
ADG	3.75
WDA	3.16
ADJ SC	36.3

	CE	BW	WW	YW	ADG	MCE	MILK	MWW	STAY	DOC	CW	YG	MARB	BF	REA	API	TI
EPD	10.2	-0.3	64.8	106.6	0.26	5.9	21.2	53.6	14.9	12.9	46.4	-0.23	0.29	-0.055	0.76	125.7	70.9
%		35	50	35	20					30	5		50	40	25	50	45

- Dam's a first calf heifer
- 5/8 blood, wonderful phenotype
- Will work best on larger framed heifers and cows



LOT 22

23

RFS FEATURE F3

RYDEEN FARMS

Hetero Black | Homo Polled | 5/8 SM 3/8 AN | Bull
BD: 2/22/18 | Tattoo: F3 | ASA#: 3462178

GW PREMIUM BEEF 021TS

SIRE J BAR J NIGHTRIDE 225Z



J BAR J MISS ND 793X

GLS COMBINATION R2

DAM D113

RFS MADELINE

ACT BW	60
ADJ WW	621
ADJ YW	1158
FRAME SC	4.8
ADG	3.39
WDA	3.05
ADJ SC	35.8

	CE	BW	WW	YW	ADG	MCE	MILK	MWW	STAY	DOC	CW	YG	MARB	BF	REA	API	TI
EPD	18.0	-0.6	64.4	102.9	0.24	9.7	14.6	46.7	16.1	11.4	31.2	-0.30	0.37	-0.050	0.82	142.7	73.4
%	3	25		45	35	10			45	50	45	35	35	50	20	15	35

- Dam's a first calf heifer, grand dam weaned 13 calves @104 birth wt ratio
- 5/8 with top 3% CE
- Good API, TI
- Low birth weight heifer bull



LOT 23



LOT 24



LOT 25



LOT 26

24

RFS FUEL F22

RYDEEN FARMS

Homo Black | Homo Polled | 3/4 SM 1/4 AN | Bull
BD: 3/2/18 | Tattoo: F22 | ASA#: 3462199

GW PREMIUM BEEF 021TS

SIRE J BAR J NIGHTRIDE 225Z



J BAR J MISS ND 793X

ELLINGSON LOAD UP B4022

DAM D74

Y17

ACT BW	80
ADJ WW	678
ADJ YW	1192
FRAME SC	5.0
ADG	3.25
WDA	2.87
ADJ SC	31.3

CE	BW	WW	YW	ADG	MCE	MILK	MWW	STAY	DOC	CW	YG	MARB	BF	REA	API	TI
15.5	-1.5	62.4	98.2	0.22	8.0	16.4	47.5	18.0	7.1	25.8	-0.34	0.34	-0.058	0.82	153.1	77.1
%	15	15		50	25			25			25	40	40	20	5	20

- Dam's a first calf Load Up heifer
- High API and TI
- We think he will work on heifers

25

F632

RYDEEN FARMS

Homo Black | Homo Polled | 5/8 SM 3/8 AN | Bull
BD: 3/29/18 | Tattoo: F632 | ASA#: 3501041

GW PREMIUM BEEF 021TS

SIRE J BAR J NIGHTRIDE 225Z



J BAR J MISS ND 793X

HART CHECKMARK 4117

DAM RFS MISS DYNA D153

B53

ACT BW	80
ADJ WW	817
ADJ YW	1406
FRAME SC	5.0
ADG	3.70
WDA	3.80
ADJ SC	38.7

CE	BW	WW	YW	ADG	MCE	MILK	MWW	STAY	DOC	CW	YG	MARB	BF	REA	API	TI
13.5	-0.9	66.1	106.6	0.25	8.3	18.8	51.8	16.4	12.8	38.7	-0.20	0.48	-0.030	0.77	144.3	77.0
%	30	25	45	35	25	20		40	30	20		20		25	15	20

- Dam's a first calf heifer purchased by Tyler Haman in our 2018 sale
- Great young herd bull prospect here
- Keep all his heifer calves
- Low birth weight heifer bull prospect

26

RFS FLEET F23

RYDEEN FARMS

Homo Black | Homo Polled | 3/4 SM 1/4 AN | Bull
BD: 3/2/18 | Tattoo: F23 | ASA#: 3462200

GW PREMIUM BEEF 021TS

SIRE J BAR J NIGHTRIDE 225Z



J BAR J MISS ND 793X

ELLINGSON LOAD UP B4022

DAM D175

KNH SUPERIOR 146Z

ACT BW	82
ADJ WW	732
ADJ YW	1355
FRAME SC	5.0
ADG	3.93
WDA	3.29
ADJ SC	34.3

CE	BW	WW	YW	ADG	MCE	MILK	MWW	STAY	DOC	CW	YG	MARB	BF	REA	API	TI
13.0	-0.3	67.7	108.3	0.25	6.6	16.5	50.2	18.3	16.4	32.8	-0.36	0.27	-0.067	0.91	147.6	77.3
%	35	35	40	30	25	50		20	4	40	20		30	10	10	20

- Dam's a first calf heifer
- Grand dam's a moderate framed Superior cos
- High API, TI
- Small head, smooth shouldered heifer bull

PUREBRED SIMMENTAL EPD AVERAGES

%	API	TI	CE	BW	WW	ADG	YW	MCE	MLK	MWW	STY	DOC	CWT	YG	MRB	BF	REA	SF
1	158.57	85.63	17.10	-2.50	89.30	0.31	136.10	10.40	32.00	69.90	22.30	17.00	48.60	-0.60	0.41	-0.15	1.22	-0.51
50	123.77	68.93	10.00	1.80	67.80	0.20	100.60	5.20	21.60	55.60	17.40	10.50	28.30	-0.46	0.01	-0.11	0.82	-0.33
Avg	123.77	68.93	10.00	1.80	67.80	0.20	100.60	5.20	21.60	55.60	17.40	10.50	28.30	-0.46	0.01	-0.11	0.82	-0.33

HYBRID SIMMENTAL EPD AVERAGES

%	API	TI	CE	BW	WW	ADG	YW	MCE	MLK	MWW	STY	DOC	CWT	YG	MRB	BF	REA	SF
1	164.21	86.95	19.60	-4.40	87.40	0.32	136.60	11.70	32.20	70.50	21.80	18.00	53.40	-0.52	0.77	-0.13	1.09	-0.52
50	123.83	69.24	11.70	0.60	64.50	0.21	98.50	6.30	21.70	54.40	15.40	11.20	29.50	-0.23	0.28	-0.04	0.62	-0.32
Avg	123.83	69.24	11.70	0.60	64.50	0.21	98.50	6.30	21.70	54.40	15.40	11.20	29.50	-0.23	0.28	-0.04	0.62	-0.32



CLRS Constitution 311 C

Homozygous Black and Homozygous Polled

Constitution was our pick at the 2016 Bred for Balance sale as a yearling. We wanted an out cross heifer bull to inject carcass quality into our program. He ranks in the top 3% of the breed for marbling and has outstanding weaning and yearling performance.

27

RFS FIRST CLASS F65

RYDEEN FARMS

Homo Black | Homo Polled | 3/4 SM 1/4 AN | Bull
BD: 3/10/18 | Tattoo: F65 | ASA#: 3462243

J BAR J NIGHTRIDE 225Z

SIRE CLRS CONSTITUTION 311 C

CLRS AID XCELLENCE 311 A

MCM TOP GRADE 018X

DAM C97

RF SAMARA S85

ACT BW	80
ADJ WW	713
ADJ YW	1315
FRAME SC	5.5
ADG	3.80
WDA	3.32
ADJ SC	38.7

	CE	BW	WW	YW	ADG	MCE	MILK	MWW	STAY	DDC	CW	YG	MARB	BF	REA	API	TI
EPD	12.2	0.7	71.0	115.9	0.28	6.8	21.3	56.8	18.0	10.1	33.1	-0.31	0.53	-0.076	0.69	148.4	80.0
%	45		30	15	10	45		40	25		35	30	15	20	40	10	10

- Dam's a second calf heifer with great individual performance, top 2% for milk & marbling
- Top 10% API and TI
- 3.8 ADG



LOT 27

28

RFS FALCON F25

RYDEEN FARMS

Homo Black | Homo Polled | 3/4 SM 1/4 AN | Bull
BD: 3/2/18 | Tattoo: F25 | ASA#: 3462202

J BAR J NIGHTRIDE 225Z

SIRE CLRS CONSTITUTION 311 C

CLRS AID XCELLENCE 311 A

HALE BLACK DIAMOND P192

DAM U167

RF RHYTHM

ACT BW	60
ADJ WW	698
ADJ YW	1207
FRAME SC	5.5
ADG	3.20
WDA	3.20
ADJ SC	39.3

	CE	BW	WW	YW	ADG	MCE	MILK	MWW	STAY	DDC	CW	YG	MARB	BF	REA	API	TI
EPD	12.6	1.3	69.8	109.9	0.25	7.1	24.7	59.6	17.4	17.2	46.6	-0.32	0.39	-0.081	0.85	149.5	80.1
%	40		30	25	25	40	25	25	30	2	5	30	35	15	15	10	10

- Dam has had 11 calves in a 363 day interval
- One of our favorite Constitution sons
- Top 10% API and TI
- Keep the daughters



LOT 28

29

RFS FORMULA F72

RYDEEN FARMS

Homo Black | Homo Polled | 3/4 SM 1/4 AN | Bull
BD: 3/11/18 | Tattoo: F72 | ASA#: 3462250

J BAR J NIGHTRIDE 225Z

SIRE CLRS CONSTITUTION 311 C

CLRS AID XCELLENCE 311 A

MR NLC SUPERIOR S6018

DAM X91

RF ELGIN H68

ACT BW	95
ADJ WW	727
ADJ YW	1415
FRAME SC	6.0
ADG	4.32
WDA	3.65
ADJ SC	40.7

	CE	BW	WW	YW	ADG	MCE	MILK	MWW	STAY	DDC	CW	YG	MARB	BF	REA	API	TI
EPD	10.9	2.5	73.9	117.3	0.27	7.0	20.0	56.9	18.6	19.9	36.3	-0.32	0.27	-0.075	0.77	142.3	77.3
%			20	15	15	40		35	15	1	25	30		20	25	15	20

- Dam has had 7 natural calves in 364 day interval, granddam has 11 calves
- ADG 4.32 with big scrotal
- Top 1% of breed for docility



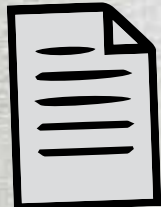
LOT 29



LOT 30



LOT 31



Ultrasound Information
Will Be Available Sale
Day and Online at

www.rydeenfarms.com



LOT 33

30

RFS FLYER F11

RYDEEN FARMS | Homo Black | Homo Polled | 5/8 SM 3/8 AN | Bull
BD: 2/27/18 | Tattoo: F11 | ASA#: 3462188

J BAR J NIGHTRIDE 225Z
SIRE CLRS CONSTITUTION 311 C
GGPLD
CLRS AID XCELLENCE 311 A
GW ROBUST 605Z
DAM D68
RFS MISS ALASKA A95

ACT BW	87
ADJ WW	728
ADJ YW	1397
FRAME SC	6.0
ADG	4.22
WDA	3.40
ADJ SC	34.1

CE	BW	WW	YW	ADG	MCE	MILK	MWW	STAY	DOC	CW	YG	MARB	BF	REA	API	TI
8.7	2.3	79.8	126.2	0.29	2.1	18.9	58.7	13.7	16.7	43.9	-0.23	0.47	-0.050	0.76	131.7	80.5
%		10	5	10			25		3	10		20	50	25	35	10

- Dam is a first calf Robust heifer
- Great weaning and yearling numbers
- Top 3% docility
- ADG 4.22

31

RFS FAMOUS F37

RYDEEN FARMS | Homo Black | Homo Polled | 3/4 SM 1/4 AN | Bull
BD: 3/5/18 | Tattoo: F37 | ASA#: 3462215

J BAR J NIGHTRIDE 225Z
SIRE CLRS CONSTITUTION 311 C
GGPLD
CLRS AID XCELLENCE 311 A
SVF ALLEGIANCE Y802
DAM D35
W15

ACT BW	92
ADJ WW	749
ADJ YW	1288
FRAME SC	5.5
ADG	3.40
WDA	3.12
ADJ SC	38.4

CE	BW	WW	YW	ADG	MCE	MILK	MWW	STAY	DOC	CW	YG	MARB	BF	REA	API	TI
11.6	1.8	80.4	124.2	0.27	6.7	14.0	54.2	12.4	17.7	40.2	-0.32	0.46	-0.071	0.83	133.6	81.6
%		5	10	15	45				2	15	30	20	20	15	30	10

- Dam is a first calf Allegiance heifer
- Grand dam is in top 5% for CE—producing 8 natural calves @105 BW ratio
- Balanced EPDs
- Top 5% WW, Top 10%YW, Top 2% docility

32

RFS FRESH F19

RYDEEN FARMS | Homo Black | Homo Polled | 3/4 SM 1/4 AN | Bull
BD: 3/1/18 | Tattoo: F19 | ASA#: 3462196

J BAR J NIGHTRIDE 225Z
SIRE CLRS CONSTITUTION 311 C
GGPLD
CLRS AID XCELLENCE 311 A
DIKEMANS SURE BET
DAM D107
COTT-GFI KELSIE 373N

ACT BW	90
ADJ WW	865
ADJ YW	1499
FRAME SC	6.5
ADG	3.99
WDA	3.68
ADJ SC	38.2

CE	BW	WW	YW	ADG	MCE	MILK	MWW	STAY	DOC	CW	YG	MARB	BF	REA	API	TI
10.4	2.0	78.6	122.6	0.27	5.4	19.3	58.5	14.9	21.7	47.4	-0.36	0.39	-0.088	0.93	143.7	83.7
%		10	10	15			30		1	4	20	35	15	10	15	3

- Dam's a first calf Dikeman's Sure Bet heifer
- Top 10% of breed for WW and YW, and top 1% for docility
- Ratios 113 for WW and YW
- Couldn't get a picture

33

RFS FORMAT F21

RYDEEN FARMS | Homo Black | Homo Polled | 3/4 SM 1/4 AN | Bull
BD: 3/2/18 | Tattoo: F21 | ASA#: 3462198

BDV TRUE GRIT 11X
SIRE BBS TRUE JUSTICE B10
GGPLD
BBS MISS JUSTICE Z7
CONNELLY IRISH 0204
DAM D13
B72

ACT BW	88
ADJ WW	800
ADJ YW	1332
FRAME SC	6.0
ADG	3.38
WDA	3.32
ADJ SC	39.3

CE	BW	WW	YW	ADG	MCE	MILK	MWW	STAY	DOC	CW	YG	MARB	BF	REA	API	TI
11.6	1.1	74.3	117.4	0.27	9.0	28.5	65.6	19.3	8.0	39.9	-0.37	0.16	-0.079	0.93	130.5	73.1
%		20	15	15	15	10	5	10		15	15		20	10	35	35

- Dam's a first calf Conneally Irish heifer
- Ratios 105 WW, 101 YW
- Big weaning and yearling performance

34

RFS FAME F10

RYDEEN FARMS

Homo Black | Homo Polled | 5/8 SM 3/8 AN | Bull
BD: 2/27/18 | Tattoo: F10 | ASA#: 3462187

BDV TRUE GRIT 11X

SIRE BBS TRUE JUSTICE B10

BBS MISS JUSTICE Z7

S A V BISMARCK 5682

DAM D16

B59

ACT BW	88
ADJ WW	714
ADJ YW	1383
FRAME SC	6.0
ADG	4.24
WDA	3.40
ADJ SC	36.1

CE	BW	WW	YW	ADG	MCE	MILK	MWW	STAY	DOC	CW	YG	MARB	BF	REA	API	TI	
EPD	9.0	1.0	71.3	114.1	0.27	6.7	32.3	67.9	19.7	13.6	32.0	-0.34	0.08	-0.068	0.82	122.5	69.2
%		25	20	15	45	1	3	10	20	40	25		30	20			

- Dam's a first calf SAV Bismarck heifer
- Top 1% breed for milk
- Top 3% for maternal WW
- ADG of 4.2



LOT 34

YEARLING BULLS

35

RFS FIXER F17

RYDEEN FARMS

Hetero Black | Homo Polled | 1/2 SM 1/2 AN | Bull
BD: 2/28/18 | Tattoo: F17 | ASA#: 3462194

CONNELLY CONFIDENCE 0100

SIRE CONNELLY CONFIDENCE PLUS

ELBANNA OF CONANGA 1209

KBHR Y068 HARLEY

DAM D162

RFS MISS ARTIST A21

ACT BW	85
ADJ WW	767
ADJ YW	1333
FRAME SC	5.5
ADG	3.60
WDA	3.29
ADJ SC	36.1

CE	BW	WW	YW	ADG	MCE	MILK	MWW	STAY	DOC	CW	YG	MARB	BF	REA	API	TI	
EPD	13.1	1.2	74.1	119.3	0.28	6.4	26.0	62.9	13.9	13.0	46.8	-0.18	0.45	-0.024	0.85	136.3	79.1
%	35		20	10	10	50	20	10		30	4		25		15	25	15

- Dam's first calf Harley heifer
- Top 10% for yearling and 20% milk
- Ratios 101 BW, 100 WW, 100 YW



LOT 35

36

RFS FRONTIER F5

RYDEEN FARMS

Homo Black | Homo Polled | PB SM | Bull
BD: 2/23/18 | Tattoo: F5 | ASA#: 3462180

CLRS AFTER SHOCK 604 A

SIRE CLRS DIVIDEND 405D

CLRS BONNIA 405 B

SVS CAPTAIN MORGAN 11Z

DAM BRANT DAIQUIRI DSLPS

RFS MISS SURE THING A4

ACT BW	75
ADJ WW	774
ADJ YW	1317
FRAME SC	5.5
ADG	3.40
WDA	3.50
ADJ SC	37.9

CE	BW	WW	YW	ADG	MCE	MILK	MWW	STAY	DOC	CW	YG	MARB	BF	REA	API	TI	
EPD	16.2	-1.4	67.3	105.0	0.24	8.2	15.2	48.8	13.3	15.5	28.6	-0.17	0.49	-0.018	0.66	142.8	78.3
%	2	4		40	25	10				4	50		1		10	10	

- Dam's a first calf heifer
- Top 1% for marbling
- Top 10% API and TI
- Ratios 111 BW, 101 WW, 100 YW



LOT 36

37

RFS FORUM F94

RYDEEN FARMS

Hetero Black | Homo Polled | PB SM | Bull
BD: 3/13/18 | Tattoo: F94 | ASA#: 3462272

CLRS AFTER SHOCK 604 A

SIRE CLRS DIVIDEND 405D

CLRS BONNIA 405 B

GLS NEW DIRECTION X184

DAM BRANT CUTIE C550A

BRANT AVA A55

ACT BW	88
ADJ WW	705
ADJ YW	1381
FRAME SC	5.5
ADG	4.25
WDA	3.49
ADJ SC	31.9

CE	BW	WW	YW	ADG	MCE	MILK	MWW	STAY	DOC	CW	YG	MARB	BF	REA	API	TI	
EPD	10.7	0.4	68.6	107.0	0.24	5.4	21.0	55.2	20.2	13.0	47.2	-0.30	-0.04	-0.071	0.86	129.1	68.6
%	40	20	50	35	25	50			15	20	2			45	35		

- Dam's a super, young cow purchased from Ron Brant
- Two natural calves @108 BW ratio
- Highest ADG at 4.25



LOT 37



LOT 38



LOT 39



SVF Allegiance Y802

Homozygous Black and Homozygous Polled

We selected Allegiance as an outcross baldy pedigree. We have fallen in love with his progeny. We have used him for four seasons and have calved out his heifers for two seasons. Our customers have been very pleased with their Allegiance herd sires and replacement females.



LOT 41

38 | RFS FORTIFIED F83

RYDEEN FARMS | Hetero Black | Homo Polled | 3/4 SM 1/4 AN | Bull
BD: 3/12/18 | Tattoo: F83 | ASA#: 3462261

SIRE WS ALL-AROUND Z35
DAM RFS MISS AGREE A83

GGPLD

WS BEEF KING W107
CDI MS HIGH ROLLER 39W
HART FINAL ANSWER 0048
Y1

ACT BW	89
ADJ WW	798
ADJ YW	1453
FRAME SC	6.5
ADG	4.12
WDA	3.82
ADJ SC	38.8

CE	BW	WW	YW	ADG	MCE	MILK	MWW	STAY	DOC	CW	YG	MARB	BF	REA	API	TI
13.1	1.1	84.4	125.3	0.26	7.6	22.0	64.1	23.6	12.8	32.3	-0.29	0.39	-0.084	0.53	155.6	83.5
%	35	2	5	20	30	50	10	1	30	40	35	35	15		4	4

- Dam's an A model Final Answer
- ADG 4.12
- Ratios 104 BW, 104 WW, 110 YW
- Top 4 % API and TI

39 | RFS FORECAST F66

RYDEEN FARMS | Hetero Black | Homo Polled | PB SM | Bull
BD: 3/10/18 | Tattoo: F66 | ASA#: 3462244

SIRE WS ALL-AROUND Z35
DAM B37

GGPLD

WS BEEF KING W107
CDI MS HIGH ROLLER 39W
TNT DUAL FOCUS T249
X72

ACT BW	83
ADJ WW	706
ADJ YW	1213
FRAME SC	5.0
ADG	3.19
WDA	3.10
ADJ SC	35.7

CE	BW	WW	YW	ADG	MCE	MILK	MWW	STAY	DOC	CW	YG	MARB	BF	REA	API	TI
15.9	0.3	81.9	120.3	0.24	8.5	15.6	56.5	22.1	18.5	35.2	-0.27	0.13	-0.060	0.72	153.4	80.8
%	3	20	10	10	25	10	45	2	1	20		25			3	5

- Dam's a B Model Dual Focus
- Low birth weight bull-use on heifers
- Curve bender birth to weaning numbers
- Top 3% API, top 5% TI

41 | RFS FORTNIGHT F141

RYDEEN FARMS | Homo Black | Homo Polled | PB SM | Bull
BD: 3/18/18 | Tattoo: F141 | ASA#: 3462319

SIRE SVF ALLEGIANCE Y802
DAM RFS MISS Z33

GGPLD

MR NLC UPGRADE U8676
DOUBLE R MISS 29G T18
TNT TANKER U263
W25

ACT BW	92
ADJ WW	762
ADJ YW	1216
FRAME SC	5.5
ADG	2.84
WDA	3.12
ADJ SC	40.1

CE	BW	WW	YW	ADG	MCE	MILK	MWW	STAY	DOC	CW	YG	MARB	BF	REA	API	TI
10.5	2.2	80.2	121.8	0.26	7.8	26.4	66.5	16.7	12.4	37.5	-0.51	0.04	-0.120	1.02	128.6	76.9
%	45	10	10	15	15	15	4		25	15	25	45	45	15	40	15

- Dam's a beautiful Tanker female
- Big scrotal bull
- Top 10% weaning and yearling EPDs, top 4% maternal WW
- Good API and TI

42

RFS FREEMAN F59

RYDEEN FARMS

Homo Black | Homo Polled | PB SM | Bull
BD: 3/10/18 | Tattoo: F59 | ASA#: 3462237

MR NLC UPGRADE U8676

SIRE SVF ALLEGIANCE Y802

DOUBLE R MISS 29G T18

TNT TANKER U263

DAM RFS MISS Z47

RFS MISS M160

ACT BW	89
ADJ WW	745
ADJ YW	1226
FRAME SC	5.5
ADG	3.00
WDA	3.50
ADJ SC	39.2

CE	BW	WW	YW	ADG	MCE	MILK	MWW	STAY	DOC	CW	YG	MARB	BF	REA	API	TI
10.8	1.2	71.0	109.6	0.24	6.2	28.5	63.9	15.7	18.2	39.9	-0.49	-0.113	1.06	119.5	70.3	
%	40	40	40	30	25	35	10	10	1	10	40		45	10	45	

- Dam's a super Tanker cow
- Top 10% for milk, top 1% docility
- Large scrotal bull



YEARLING BULLS

43

RFS FUNCTION F60

RYDEEN FARMS

Homo Black | Homo Polled | PB SM | Bull
BD: 3/10/18 | Tattoo: F60 | ASA#: 3462238

MR NLC UPGRADE U8676

SIRE SVF ALLEGIANCE Y802

DOUBLE R MISS 29G T18

OLF GRANDMASTER Y33

DAM RFS MISS BOSNIA B189

RF PINA COLADA

ACT BW	95
ADJ WW	842
ADJ YW	1313
FRAME SC	5.5
ADG	3.00
WDA	3.60
ADJ SC	37.2

CE	BW	WW	YW	ADG	MCE	MILK	MWW	STAY	DOC	CW	YG	MARB	BF	REA	API	TI
10.6	1.9	80.2	120.6	0.25	7.2	26.5	66.5	15.2	18.1	49.0	-0.47	-0.109	1.13	119.7	74.3	
%	45		10	10	20	20	15	4		1	1	50		4		25

- Dam's a milk machine
- Blazed face, 840 WW
- Top 1% docility
- Top 10% WW, YW



LOT 43

44

RFS FORTUNE F115

RYDEEN FARMS

Homo Black | Homo Polled | PB SM | Bull
BD: 3/15/18 | Tattoo: F115 | ASA#: 3462293

SVF ALLEGIANCE Y802

SIRE RFS CAPTAIN C21

W15

KBHR Y068 HARLEY

DAM RFS MISS ASTRID A112

X46

ACT BW	88
ADJ WW	760
ADJ YW	1352
FRAME SC	6.5
ADG	3.71
WDA	3.48
ADJ SC	37.0

CE	BW	WW	YW	ADG	MCE	MILK	MWW	STAY	DOC	CW	YG	MARB	BF	REA	API	TI
15.4	1.0	73.2	108.8	0.22	7.9	19.6	56.1	19.3	15.5	48.0	-0.40	-0.098	0.97	131.8	70.4	
%	4	35	30	30	40	15	50	25	4	2				20	30	45

- Dam's 7 years old and grand dam is 9 and both remain in the herd
- Sire was the high seller in 2016 to Emmons Ranch
- Top 4% CE
- Ratios 102 at YW



LOT 44

45

RFS FORGE F102

RYDEEN FARMS

Homo Black | Homo Polled | PB SM | Bull
BD: 3/14/18 | Tattoo: F102 | ASA#: 3462280

CCR GRAVITY 9064A

SIRE KBHR COMPASS C324

KBHR Y142

LCHMN BRIGHT LIGHT L122L

DAM RFS MISS Z10

X72

ACT BW	98
ADJ WW	856
ADJ YW	1380
FRAME SC	5.5
ADG	3.29
WDA	3.57
ADJ SC	39.9

CE	BW	WW	YW	ADG	MCE	MILK	MWW	STAY	DOC	CW	YG	MARB	BF	REA	API	TI
5.3	3.3	83.4	128.1	0.28	3.5	23.7	65.3	20.8	11.1	45.4	-0.39	0.19	-0.100	0.91	137.1	79.5
%		4	4	10		35	10	10	45	3		15		30	20	10

- Dam's ranked top 1% of breed for milk and stay
- Solid black, deep bodied great cow bull
- Big weaning, yearling numbers
- Ratio 112 WW, 104 YW



LOT 45



MEETING TEMPLE GRANDIN

46 | RFS FRESNO F207

RYDEEN FARMS | Hetero Black | Homo Polled | 5/8 SM 3/8 AN | Bull
 BD: 4/25/18 | Tattoo: F207 | ASA#: 3462387

SIRE KBHR COMPASS C324
 (GGPLD) KBHR Y142
 WILDE'S ARMOR 6210

DAM Y66
 RF SAMARA S85

ACT BW	85
ADJ HW	811
ADJ YW	
FRAME SC	5.5
ADG	2.92
WDA	3.35
ADJ SC	39.2

CE	BW	WW	YW	ADG	MCE	MILK	MWW	STAY	DOC	CW	YG	MARB	BF	REA	API	TI
9.0	1.2	71.2	112.8	0.26	6.8	24.8	60.4	21.4	10.9	38.0	-0.28	0.21	-0.067	0.71	132.0	71.0
%		25	20	20	45	25	20	2		20	40		30	35	35	45

- Dam's a great Wilde's Armor female
- Youngest bull in the sale
- Top 2% stay
- Ratio 108 BW, 106 WW



Ellingson Load Up B4022

Homozygous Black and Homozygous Polled, Red Charlie Free
 We sold our first Load Up progeny in our 2017 sale. They were well accepted due to his outstanding muscle definition and phenotype. He moves like a cat and has great feet. We appreciate his moderate frame and have found that mating him with red cows or black cows; his progeny stand out.

47 | RFS FULL THROTTLE F86

RYDEEN FARMS | Hetero Black | Homo Polled | PB SM | Bull
 BD: 3/12/18 | Tattoo: F86 | ASA#: 3462264

SIRE ELLINGSON LOAD UP B4022
 (GGPLD) BRANT R17K MS TOP SHELF
 MR NLC UPGRADE U8676

DAM B116
 BRANT NUTMEG Y546R

ACT BW	100
ADJ HW	750
ADJ YW	1330
FRAME SC	5.5
ADG	3.65
WDA	3.37
ADJ SC	41.8

CE	BW	WW	YW	ADG	MCE	MILK	MWW	STAY	DOC	CW	YG	MARB	BF	REA	API	TI
12.1	2.7	71.9	112.8	0.26	4.7	16.2	52.1	16.8	13.1	32.4	-0.45	0.15	-0.096	0.95	132.9	73.2
%		35	25	15						20	35		20	25	25	30

- Dam's a wonderful Upgrade cow with a good udder
- Calving ease, solid black herd sire
- Well balanced EPDs
- Big scrotal



LOT 47

48 | RFS FONZY F90

RYDEEN FARMS | Hetero Black | Heterozygous Polled | PB SM | Bull
 BD: 3/12/18 | Tattoo: F90 | ASA#: 3462268

SIRE ELLINGSON LOAD UP B4022
 (GGPLD) BRANT R17K MS TOP SHELF
 TNT TANKER U263

DAM RFS MISS ARTIST A21
 U64

ACT BW	94
ADJ HW	704
ADJ YW	1299
FRAME SC	5.5
ADG	3.74
WDA	3.34
ADJ SC	44.8

CE	BW	WW	YW	ADG	MCE	MILK	MWW	STAY	DOC	CW	YG	MARB	BF	REA	API	TI
8.3	2.9	70.8	113.9	0.27	4.6	25.3	60.6	19.4	11.7	32.0	-0.44	-0.14	-0.102	0.89	117.4	65.7
%		40	20	10		20	20	20	35	35				35		

- Dam's a favorite Tanker cow, weaned 4@ 104WW ratio
- Good Stay and Milk numbers



LOT 48

49 | RFS FRONT PAGE F122

RYDEEN FARMS

Homo Black | Homo Polled | PB SM | Bull
BD: 3/15/18 | Tattoo: F122 | ASA#: 3462300

REMINGTON LOCK N LOAD54U

SIRE ELLINGSON LOAD UP B4022

BRANT R17K MS TOP SHELF

KBHR Y068 HARLEY

DAM RFS MISS ALASKA A95

U102

ACT BW	87
ADJ WW	806
ADJ YW	1372
FRAME SC	5.5
ADG	3.54
WDA	3.54
ADJ SC	43.0

CE	BW	WW	YW	ADG	MCE	MILK	MWW	STAY	DOC	CW	YG	MARB	BF	REA	API	TI
7.9	2.7	71.1	111.5	0.25	0.0	21.8	57.3	22.8	13.5	39.8	-0.44	-0.14	-0.112	0.90	123.3	65.3
%		40	25	20		50	40	1	15	10			45	35		

- Dam's a broody, solid black, deep bodied cow
- Growth bull with Stay
- Ratios 104 BW, 105 WW, 104 YW



LOT 49

YEARLING BULLS

50 | RFS FELIX F74

RYDEEN FARMS

Homo Black | Homo Polled | PB SM | Bull
BD: 3/11/18 | Tattoo: F74 | ASA#: 3462252

REMINGTON LOCK N LOAD54U

SIRE ELLINGSON LOAD UP B4022

BRANT R17K MS TOP SHELF

TNT TANKER U263

DAM RFS MISS Z60

RF MISS RAM P284

ACT BW	89
ADJ WW	758
ADJ YW	1294
FRAME SC	5.5
ADG	3.35
WDA	3.33
ADJ SC	37.7

CE	BW	WW	YW	ADG	MCE	MILK	MWW	STAY	DOC	CW	YG	MARB	BF	REA	API	TI
11.5	2.1	71.5	112.6	0.26	6.8	16.0	51.7	20.2	13.7	49.2	-0.44	-0.10	-0.106	1.05	126.4	67.4
%	30		35	25	15	25			15	15	1			10	45	

- Dam is a Tanker that has weaned 5 good ones (101 (5) BW)
- Super deep bodied, baldy bull
- Big scrotal



LOT 50

51 | RFS FRANCE F184

RYDEEN FARMS

Homo Black | Homo Polled | PB SM | Bull
BD: 4/5/18 | Tattoo: F184 | ASA#: 3462364

REMINGTON LOCK N LOAD54U

SIRE ELLINGSON LOAD UP B4022

BRANT R17K MS TOP SHELF

GFI RAMBLER J114

DAM RF SEASON S141

RFS REBA G38

ACT BW	95
ADJ WW	721
ADJ YW	1202
FRAME SC	5.5
ADG	3.00
WDA	3.05
ADJ SC	35.1

CE	BW	WW	YW	ADG	MCE	MILK	MWW	STAY	DOC	CW	YG	MARB	BF	REA	API	TI
11.0	2.3	57.9	91.5	0.21	4.5	30.1	59.0	19.3	13.0	37.3	-0.48	-0.35	-0.108	1.02	104.2	54.0
%	40			50		3	30	25	20	15	45			15		

- Dam's a good one, weaning 10 calves at Rydeen Farms
- Smooth sided, deep bodied baldy
- Balanced EPDs



LOT 51

52 | RFS FERGUS F172

RYDEEN FARMS

Homo Black | Homo Polled | PB SM | Bull
BD: 3/29/18 | Tattoo: F172 | ASA#: 3462351

REMINGTON LOCK N LOAD54U

SIRE ELLINGSON LOAD UP B4022

BRANT R17K MS TOP SHELF

KBHR Y068 HARLEY

DAM B205

W21

ACT BW	95
ADJ WW	762
ADJ YW	1411
FRAME SC	6.0
ADG	4.07
WDA	3.58
ADJ SC	42.7

CE	BW	WW	YW	ADG	MCE	MILK	MWW	STAY	DOC	CW	YG	MARB	BF	REA	API	TI
8.0	2.8	71.8	112.7	0.26	0.9	20.9	56.7	17.2	13.3	40.6	-0.47	-0.18	-0.104	1.07	110.2	64.7
%		35	25	15			45		15	10	50			10		

- Dam's a B model Harley that weans the ones that grow
- Young performance bull
- Ratios 100 WW, 107 YW
- ADG 4.07



LOT 52



LOT 53

53

RFS FRASIER F188

RYDEEN FARMS

Homo Black | Homo Polled | PB SM | Bull
BD: 4/8/18 | Tattoo: F188 | ASA#: 3462368

SIRE **ELLINGSON LOAD UP B4022** ACT BW 105
ADJ HW 899
ADJ YW
FRAME SC 5.5
ADG 2.94
WDA 3.51
ADJ SC 40.3

GGPLD
 BRANT R17K MS TOP SHELF
 ELLINGSON RIGHT ON W944
 DAM **Y176**
 RFS MISS T90

CE	BW	WW	YW	ADG	MCE	MILK	MWW	STAY	DOC	CW	YG	MARB	BF	REA	API	TI
5.6	3.5	69.7	110.2	0.25	1.6	30.6	65.4	21.4	14.0	39.8	-0.48	-0.18	-0.118	0.98	114.1	63.4
%																
		45	30	20		3	10	4	10	10	45		45	20		

- Dam's as good as they get—weaned 6 (ratio 107 WW)
- Good Milk, Stay, and Docility—keep his daughters
- Ratios 117 WW



GENEX

BCLR Wide Load C21-3

Homozygous Black and Homozygous Polled

After traveling around and looking at a number of herds, we chose Wide Load as an AI sire in our black program. His phenotype and performance are impressive.

54

RFS FESTUS F155

RYDEEN FARMS

Homo Black | Homo Polled | PB SM | Bull
BD: 3/21/18 | Tattoo: F155 | ASA#: 3462333

SIRE **BCLR WIDE LOAD C21-3** ACT BW 94
ADJ HW 816
ADJ YW 1393
FRAME SC 5.5
ADG 3.61
WDA 3.60
ADJ SC 42.3

GGPLD
 CCR WIDE RANGE 9005A
 WS MOTHER LOD E W21
 ELLINGSON RIGHT ON W944
 DAM **Z174**
 RFS MISS T86

CE	BW	WW	YW	ADG	MCE	MILK	MWW	STAY	DOC	CW	YG	MARB	BF	REA	API	TI
8.3	2.7	74.0	115.9	0.26	5.2	29.0	66.0	17.0	9.4	33.0	-0.45	0.10	-0.078	1.08	126.6	73.9
%																
		25	15	15		5	5			30		30		10	45	25

- Dam's a great performer 103 (5)BW, 102 (5) WW, 102 (5) YW
- Big scrotal
- Performance bull
- Ratios 107 WW, 105 YW



LOT 54

55

RFS FOCUS F150

RYDEEN FARMS

Homo Black | Homo Polled | PB SM | Bull
BD: 3/19/18 | Tattoo: F150 | ASA#: 3462328

SIRE **BCLR WIDE LOAD C21-3** ACT BW 96
ADJ HW 754
ADJ YW 1302
FRAME SC 5.5
ADG 3.43
WDA 3.31
ADJ SC 38.2

GGPLD
 CCR WIDE RANGE 9005A
 WS MOTHER LOD E W21
 HOOKS SHEAR FORCE 38K
 DAM **RFS MISS T37**
 RF RABBIT

CE	BW	WW	YW	ADG	MCE	MILK	MWW	STAY	DOC	CW	YG	MARB	BF	REA	API	TI
10.3	1.5	71.6	105.6	0.21	5.0	26.1	61.8	21.2	16.0	19.3	-0.55	0.06	-0.096	1.09	136.1	73.1
%																
		50	45	35	40	50	15	15	4	3		10	40	10	20	30

- Dam's weaned #8 in 2018, ratios 101 (8)BW, 103(8)WW, 102(8) YW
- Smooth shouldered, long bodied bull
- Good API, TI, STAY and DOC numbers



LOT 55

56**RFS FLYNN F91**

RYDEEN FARMS

Homo Black | Homo Polled | PB SM | Bull
BD: 3/12/18 | Tattoo: F91 | ASA#: 3462269

CCR WIDE RANGE 9005A

SIRE BCLR WIDE LOAD C21-3

WS MOTHER LODE W21

TNT PUNCH Y260

W91



DAM B93

ACT BW	87
ADJ WW	729
ADJ YW	1174
FRAME SC	5.5
ADG	2.80
WDA	2.99
ADJ SC	37.8

CE	BW	WW	YW	ADG	MCE	MILK	MWW	STAY	DOC	CW	YG	MARB	BF	REA	API	TI
12.2	1.7	72.9	111.5	0.24	7.7	26.0	62.3	19.9	7.4	15.5	-0.37	0.08	-0.073	0.68	136.7	73.8
%	25	50	30	25	25	15	15	15	15			35			20	25

- Dam and grand dam have weaned 13 calves at RFS (ratio 102 (13) BW)
- Calving ease with performance that grow!
- Low birth weight Wide Load son
- Good maternal, API, TI



LOT 56

YEARLING BULLS

57**RFS FARRELL F169**

RYDEEN FARMS

Hetero Black | Homo Polled | PB SM | Bull
BD: 3/28/18 | Tattoo: F169 | ASA#: 3462348

CCR WIDE RANGE 9005A

SIRE BCLR WIDE LOAD C21-3

WS MOTHER LODE W21

LCHMN BRIGHT LIGHT L122L

Z174



DAM B53

ACT BW	100
ADJ WW	830
ADJ YW	1465
FRAME SC	6.0
ADG	3.98
WDA	3.73
ADJ SC	38.7

CE	BW	WW	YW	ADG	MCE	MILK	MWW	STAY	DOC	CW	YG	MARB	BF	REA	API	TI
7.6	2.7	75.9	120.8	0.28	4.8	32.0	69.9	16.7	9.8	28.6	-0.44	0.09	-0.083	0.99	125.5	75.0
%		20	10	10		2	2			50		30		20	45	20

- Dam's a sweetheart, top 1% milk, top 10% API
- Ratios 108 WW, 111 YW
- Performance bull
- ADG 3.98

**58****RFS FORD F132**

RYDEEN FARMS

Homo Black | Homo Polled | 3/4 SM 1/4 AN | Bull
BD: 3/16/18 | Tattoo: F132 | ASA#: 3462310

CCR WIDE RANGE 9005A

SIRE BCLR WIDE LOAD C21-3

WS MOTHER LODE W21

HART FINAL ANSWER 0048

RFS MISS ACCORD A16



DAM C122

ACT BW	105
ADJ WW	772
ADJ YW	1366
FRAME SC	6.5
ADG	3.75
WDA	3.45
ADJ SC	40.0

CE	BW	WW	YW	ADG	MCE	MILK	MWW	STAY	DOC	CW	YG	MARB	BF	REA	API	TI
7.8	4.4	88.6	137.7	0.31	4.9	19.1	63.4	14.4	14.0	35.4	-0.26	0.19	-0.047	0.78	115.8	76.2
%		1	1	3			10		20	30	45		50	25		20

- Dam's a C model Final Answer halfblood
- Big weaning, yearling numbers-top 1% of breed for WW, YW
- Use this 3/4 blood on cows



LOT 58

**What does this mean?**

These bulls and heifers have been parent verified and their EPD's genomically enhanced for accuracy.

Using genomic-enhanced EPDs for selection of young breeding stock provides a level of precision and reliability that's never been available to producers before.



Bob Weaver
Kansas State University



LOT 59



LOT 60



STEVE AND WADE AT THE FALL FOCUS



AMERICAN SIMMENTAL ASSOCIATION'S 50TH ANNIVERSARY

59

RYDEEN FARMS

RFS EPIC E254

Red | Homo Polled | PB SM | Bull

BD: 9/6/17 | Tattoo: E254 | ASA#: 3400020

SIRE ELLINGSON COMPLETE A358



DAM RFS MISS BECKY B223

R PLUS HARD ROCK 145X
ELLINGSON MS AMIGO X5
TNT AXIS X307
RF MISS RAM P281

ACT BW	94
ADJ WW	676
ACT WT 1/1/19	1330
FRAME SC	5.0
ACT SC	38

EPD	CE	BW	WW	YW	ADG	MCE	MILK	MWW	STAY	DOC	CW	YG	MARB	BF	REA	API	TI
	8.6	4.5	86.4	120.5	0.21	5.5	8.2	51.3	19.2	9.0	27.8	-0.46	-0.08	-0.093	0.95	120.2	71.7
%			2	10	50	50			25						25		35

- Dam's an excellent red (Axis) daughter with a daughter in our fall herd
- Excellent WW, YW
- Big, stout red bull to cover lots of cows

60

RYDEEN FARMS

Red | Homo Polled | 1/2 SM 1/2 CS | Bull

BD: 9/11/17 | Tattoo: E266 | ASA#: 3400032

SIRE ELLINGSON COMPLETE A358



DAM P50

R PLUS HARD ROCK 145X
ELLINGSON MS AMIGO X5

ACT BW	92
ADJ WW	772
ACT WT 1/1/19	1425
FRAME SC	6.0
ACT SC	42

EPD	CE	BW	WW	YW	ADG	MCE	MILK	MWW	STAY	DOC	CW	YG	MARB	BF	REA	API	TI
	13.2	1.7	73.9	107.0	0.21	8.3	15.7	52.6	10.3	8.7	35.5	-0.57	-0.06	-0.137	1.05	100.5	65.9
%	35		20	35		20					30	1		1	2		

- Dam is a 1/2 blood red angus, dark red, deep bodied
- Dark red bull with calving ease
- Big ribeye bull
- Best used on cows

61

RYDEEN FARMS

E267

Red | Homo Polled | PB SM | Bull

BD: 9/13/17 | Tattoo: E267 | ASA#: 3400033

SIRE ELLINGSON COMPLETE A358



DAM B98

R PLUS HARD ROCK 145X
ELLINGSON MS AMIGO X5
CDI AUTHORITY 77X
W4

ACT BW	94
ADJ WW	650
ACT WT 1/1/19	1420
FRAME SC	5.5
ACT SC	41

EPD	CE	BW	WW	YW	ADG	MCE	MILK	MWW	STAY	DOC	CW	YG	MARB	BF	REA	API	TI
	8.1	3.1	77.2	110.9	0.21	5.0	16.2	54.8	19.6	10.5	34.8	-0.44	-0.08	-0.110	0.85	119.8	68.7
%			15	25	50				20		25				45		

- Dam's a dark red Authority, back to Radar on the bottom side
- Big, deep bodied fall born bull
- Wean the whoppers with this guy

62

RYDEEN FARMS

RFS EXTEND E259

Homo Black | Homo Polled | 3/4 SM 1/4 AN | Bull

BD: 9/8/17 | Tattoo: E259 | ASA#: 3400025

SIRE ELLINGSON LOAD UP B4022



DAM RFS MISS A240

REMINGTON LOCK N LOADS4U
BRANT R17K MS TOP SHELF
HART FINAL ANSWER 0048
Y121

ACT BW	87
ADJ WW	393
ACT WT 1/1/19	1465
FRAME SC	5.5
ACT SC	43

EPD	CE	BW	WW	YW	ADG	MCE	MILK	MWW	STAY	DOC	CW	YG	MARB	BF	REA	API	TI
	10.3	1.5	54.3	87.2	0.21	5.3	15.6	42.6	17.2	9.9	40.0	-0.22	0.01	-0.064	0.59	106.6	54.5
%									30		15			30			

- Dam's a good one (106 (3) BW)
- Smooth sided, long 3/4blood
- Will add a bit more frame to an Angus cow

63**RFS ELEMENT E282**

RYDEEN FARMS

Homo Black | Homo Polled | PB SM | Bull
BD: 10/14/17 | Tattoo: E282 | ASA#: 3400048

REMINGTON LOCK N LOAD54U

SIRE **ELLINGSON LOAD UP B4022**

BRANT R17K MS TOP SHELF

KBHR Y068 HARLEY

DAM **RFS MISS BERIT B246**

RF PANDORA

ACT BW	87
ADJ WW	737
ACT WT	1230
1/1/19	
FRAME SC	5.5
ACT SC	38

CE	BW	WW	YW	ADG	MCE	MILK	MWW	STAY	DOC	CW	YG	MARB	BF	REA	API	TI	
EPD	11.5	2.0	62.9	100.3	0.23	4.4	23.5	54.9	18.9	14.2	34.8	-0.54	-0.17	-0.124	1.05	117.5	61.9
%	30			35		35		30	10	25	15		20	10			

- Dam's a young Harley, great cow family
- Good spread bull ratio 102 BW, 104 WW



LOT 63

64**RFS ELITE E277**

RYDEEN FARMS

Homo Black | Homo Polled | 3/4 SM 1/4 AN | Bull
BD: 10/4/17 | Tattoo: E277 | ASA#: 3400043

REMINGTON LOCK N LOAD54U

SIRE **ELLINGSON LOAD UP B4022**

BRANT R17K MS TOP SHELF

GW PREMIUM BEEF 021TS

DAM **RFS MISS ACTRESS A64**

Y130

ACT BW	95
ADJ WW	898
ACT WT	1590
1/1/19	
FRAME SC	6.0
ACT SC	43

CE	BW	WW	YW	ADG	MCE	MILK	MWW	STAY	DOC	CW	YG	MARB	BF	REA	API	TI	
EPD	8.3	2.3	78.2	125.6	0.30	2.2	21.9	60.9	20.8	12.9	45.6	-0.33	0.19	-0.070	0.96	141.5	78.1
%			10	5	4		50	20	3	30	5	25		30	5	15	15

- Dam's a very moderate Premium Beef female
- Big, stout 3/4 blood baldy
- High API, TI
- Highest weaning wt 18 month bull



LOT 64

65**RFS EXCEED E278**

RYDEEN FARMS

Homo Black | Homo Polled | PB SM | Bull
BD: 10/4/17 | Tattoo: E278 | ASA#: 3400044

REMINGTON LOCK N LOAD54U

SIRE **ELLINGSON LOAD UP B4022**

BRANT R17K MS TOP SHELF

GFI RAMBLER J114

DAM **RF MISS RAM P283**

RF MISS L41

ACT BW	100
ADJ WW	714
ACT WT	1325
1/1/19	
FRAME SC	5.5
ACT SC	37

CE	BW	WW	YW	ADG	MCE	MILK	MWW	STAY	DOC	CW	YG	MARB	BF	REA	API	TI	
EPD	6.2	3.1	62.6	99.8	0.23	0.6	29.5	60.7	22.0	8.7	29.0	-0.47	-0.22	-0.098	0.96	111.2	58.4
%				35		4	20	2		50	50			20			

- Dam is one of our oldest cows, weaning 10 at RFS
- Smaller framed, solid black
- Top 4% milk, 2% stay



LOT 65

66**RFS ELI E268**

RYDEEN FARMS

Homo Black | Homo Polled | PB SM | Bull
BD: 9/14/17 | Tattoo: E268 | ASA#: 3400034

MCM TOP GRADE 018X

SIRE **HOOK'S BROADWAY 11B**

HOOK'S WATER LILY 89W

DIKEMANS SURE BET

DAM **RFS MISS A211**

RF ROSA

ACT BW	86
ADJ WW	705
ACT WT	1320
1/1/19	
FRAME SC	5.5
ACT SC	40

CE	BW	WW	YW	ADG	MCE	MILK	MWW	STAY	DOC	CW	YG	MARB	BF	REA	API	TI	
EPD	8.8	2.8	73.0	110.4	0.23	5.2	25.3	61.8	17.7	17.8	28.5	-0.61	0.17	-0.126	1.17	132.1	75.2
%			30	30	35		20	15	50	1	50	1	20	20	3	30	20

- Dam and grand dam produce low BW calves ratio (104 (13) BW)
- All black Broadway with excellent carcass numbers



LOT 66

18 MONTH OLD BULLS



LOT 67



LOT 68



LOT 69



LOT 70

67

RFS EXPERT E248

RYDEEN FARMS

Homo Black | Homo Polled | PB SM | Bull
BD: 9/3/17 | Tattoo: E248 | ASA#: 3400014

MCM TOP GRADE 018X

SIRE HOOK'S BROADWAY 11B
GGPLD HOOK'S WATER LILY 89W
ELLINGSON LEGACY M229

DAM Y112
RF SILVIA S27

ACT BW	90
ADJ WW	611
ACT WT 1/1/19	1270
FRAME SC	4.75
ACT SC	37

CE	BW	WW	YW	ADG	MCE	MILK	MWW	STAY	DOC	CW	YG	MARB	BF	REA	API	TI
8.7	2.5	73.2	113.9	0.25	5.2	22.0	58.5	19.5	14.0	36.8	-0.51	0.20	-0.122	0.99	137.9	75.8
%		30	20	20		50	35	20	10	15	25	15	20	20	15	20

- Dam is a solid black Olie cow we don't have enough of
- Excellent carcass numbers

68

RFS EMPIRE E261

RYDEEN FARMS

Hetero Black | Homo Polled | PB SM | Bull
BD: 9/9/17 | Tattoo: E261 | ASA#: 3400027

MCM TOP GRADE 018X

SIRE HOOK'S BROADWAY 11B
GGPLD HOOK'S WATER LILY 89W
35R

DAM W136
RF RUDI

ACT BW	96
ADJ WW	742
ACT WT 1/1/19	1440
FRAME SC	5.5
ACT SC	36

CE	BW	WW	YW	ADG	MCE	MILK	MWW	STAY	DOC	CW	YG	MARB	BF	REA	API	TI
6.2	2.7	71.8	107.6	0.22	4.0	30.7	66.6	19.2	12.4	24.8	-0.44	0.06	-0.098	0.81	124.2	71.0
%		35	35	40		2	4	25	25			40			50	40

- Dam is 10 and is nursing another in our fall herd
- Nice, long-bodied blazed bull
- Good milk, stay numbers
- WW ratio 104

69

RFS ESTEEM E245

RYDEEN FARMS

Homo Black | Homo Polled | 3/4 SM 1/4 AN | Bull
BD: 9/2/17 | Tattoo: E245 | ASA#: 3400011

J BAR J NIGHTRIDE 225Z

SIRE CLRS CONSTITUTION 311 C
GGPLD CLRS AID XCELLENCE 311 A

DAM RFS MISS APPROACH A178
KBHR Y068 HARLEY
RF SAPPHIRE S96

ACT BW	86
ADJ WW	586
ACT WT 1/1/19	1325
FRAME SC	5.5
ACT SC	38

CE	BW	WW	YW	ADG	MCE	MILK	MWW	STAY	DOC	CW	YG	MARB	BF	REA	API	TI
10.2	1.5	67.7	108.5	0.25	4.1	16.7	50.5	15.6	15.4	53.1	-0.31	0.24	-0.090	0.84	133.1	73.6
%		40	30	25				50	10	2	30		15	15	30	30

- Dam is a blaze faced Harley cow
- Low birth weight, 3/4 blood
- Balanced EPDs

70

RFS EXACT E252

RYDEEN FARMS

Hetero Black | Homo Polled | 3/8 SM 1/4 CS 1/8 AN 1/4 MX | Bull
BD: 9/6/17 | Tattoo: E252 | ASA#: 3400018

J BAR J NIGHTRIDE 225Z

SIRE CLRS CONSTITUTION 311 C
GGPLD CLRS AID XCELLENCE 311 A

DAM P80

ACT BW	89
ADJ WW	670
ACT WT 1/1/19	1410
FRAME SC	5.0
ACT SC	38

CE	BW	WW	YW	ADG	MCE	MILK	MWW	STAY	DOC	CW	YG	MARB	BF	REA	API	TI
18.5	-0.1	65.0	105.9	0.26	10.8	19.0	51.4	2.7	18.1	23.3	-0.17	0.52	-0.046	0.35	123.6	76.8
%	3	35	50	35	20	3			1			15	50			20

- Dam is a wonderful, unregistered PB angus cow
- Top 3% CE and MCE, Top 1% docility
- Excellent marbling, good bull

71

RFS EFFORT E269

RYDEEN FARMS

Homo Black | Homo Polled | 1/2 SM 1/2 AN | Bull
BD: 9/15/17 | Tattoo: E269 | ASA#: 3400035

CONNELY CONFIDENCE 0100

SIRE **CONNELY CONFIDENCE PLUS**

ELBANNA OF CONANGA 1209

KBHR Y068 HARLEY

DAM **RFS MISS BLOSSOM B244**

Y116

ACT BW	90
ADJ WW	731
ACT WT	1485
1/1/19	
FRAME SC	6.5
ACT SC	39

CE	BW	WW	YW	ADG	MCE	MILK	MWW	STAY	DOC	CW	YG	MARB	BF	REA	API	TI	
EPD	12.6	1.1	68.0	112.5	0.28	5.3	28.9	62.8	16.3	11.2	43.7	-0.18	0.11	-0.020	0.84	120.2	67.5
%	40		40	20	10		10	10	40		10				15		

- Dam is a young Harley cow that ranks top 1% for milk
- Nice, all black, smooth sided
- Good weaning weight bull, top 10% ADG and milk



LOT 71

72

RFS EVAN E258

RYDEEN FARMS

Hetero Black | Homo Polled | PB SM | Bull
BD: 9/8/17 | Tattoo: E258 | ASA#: 3400024

CCR GRAVITY 9064A

SIRE **KBHR COMPASS C324**

KBHR Y142

GFI RAMBLER J114

DAM **W86**

RFS CASS H28

ACT BW	95
ADJ WW	795
ACT WT	1505
1/1/19	
FRAME SC	6.0
ACT SC	41

CE	BW	WW	YW	ADG	MCE	MILK	MWW	STAY	DOC	CW	YG	MARB	BF	REA	API	TI	
EPD	7.5	3.6	80.7	121.4	0.25	5.6	18.6	58.9	20.3	11.3	39.1	-0.49	0.08	-0.108	1.08	131.5	75.1
%			10	10	20	45		30	10	40	10	40	35		10	30	20

- Dam is a W model Rambler that ratios 102 (7) BW, 104 (7) WW
- Thick made, deep sided Compass son
- Excellent carcass with good API and TI



LOT 72

73

RFS EDISON E265

RYDEEN FARMS

Hetero Black | Homo Polled | PB SM | Bull
BD: 9/10/17 | Tattoo: E265 | ASA#: 3400031

BDV TRUE GRIT 11X

SIRE **BBS TRUE JUSTICE B10**

BBS MISS JUSTICE Z7

KBHR Y068 HARLEY

DAM **RFS MISS BECCA B245**

RF MISS RAM P282

ACT BW	90
ADJ WW	756
ACT WT	1380
1/1/19	
FRAME SC	6.0
ACT SC	41

CE	BW	WW	YW	ADG	MCE	MILK	MWW	STAY	DOC	CW	YG	MARB	BF	REA	API	TI	
EPD	8.1	1.7	71.9	113.7	0.26	3.0	29.3	65.2	16.4	13.1	27.1	-0.53	-0.04	-0.120	0.93	118.9	70.7
%		50	35	20	15		4	10		20		20		45	30		40

- Dam's a young Harley female that ratios (105 (2) WW)
- Best used on cows
- Good birth to weaning performance



LOT 73

TWO YEAR OLD BULLS

74

RFS EASTON E9

RYDEEN FARMS

Homo Black | Homo Polled | 3/4 SM 1/4 AN | Bull
BD: 3/2/17 | Tattoo: E9 | ASA#: 3309819

J BAR J NIGHTRIDE 225Z

SIRE **CLRS CONSTITUTION 311 C**

CLRS AID XCELLENCE 311 A

KBHR Y068 HARLEY

DAM **C92**

Y141

ACT BW	80
ADJ WW	752
ADJ YW	1091
FRAME SC	5.75
ACT SC	

CE	BW	WW	YW	ADG	MCE	MILK	MWW	STAY	DOC	CW	YG	MARB	BF	REA	API	TI	
EPD	10.9	1.8	69.6	112.0	0.27	2.5	24.9	59.6	15.0	16.8	37.1	-0.34	0.25	-0.075	0.82	134.2	75.8
%			35	25	15		25	25		3	25	25		20	20	30	25

- Dam is a solid black, easy going Harley lady (top 3% docility)
- Low birth weight Constitution son
- Good API, TI, IMF



LOT 74

18 MONTH OLD BULLS

We would like the two year old bulls to be picked up (or delivered) as soon as possible.

2 YEAR OLD BULLS



LOT 76



LOT 77



75

RFS ERIE 133

RYDEEN FARMS

Homo Black | Homo Polled | 3/4 SM 1/4 AN | Bull
BD: 3/20/17 | Tattoo: E133 | ASA#: 3309945

J BAR J NIGHTRIDE 225Z

SIRE CLRS CONSTITUTION 311 C



CLRS AID XCELLENCE 311 A

GFI MAGNUM K52

DAM RF RUTH

RFS COFFEE E19

ACT BW	89
ADJ WW	679
ADJ YW	1091
FRAME SC	6.0
ACT SC	

CE	BW	WW	YW	ADG	MCE	MILK	MWW	STAY	DOC	CW	YG	MARB	BF	REA	API	TI	
EPD	11.2	2.7	78.1	122.1	0.27	6.4	19.1	58.1	15.1	15.6	22.6	-0.41	0.24	-0.101	0.66	135.5	79.1
%			10	10	15	50		30		10		10		4	45	25	15

- Dam weaned her 12th calf in October—longevity in this guy
- Two year old, all black
- Excellent WW, YW API, TI

76

RFS EDDY E166

RYDEEN FARMS

Homo Black | Homo Polled | PB SM | Bull
BD: 3/31/17 | Tattoo: E166 | ASA#: 3309978

REMINGTON LOCK N LOAD54U

SIRE ELLINGSON LOAD UP B4022



BRANT R17K MS TOP SHELF

TNT PUNCH Y260

DAM B130

U80

ACT BW	80
ADJ WW	779
ADJ YW	1200
FRAME SC	6.0
ACT SC	

CE	BW	WW	YW	ADG	MCE	MILK	MWW	STAY	DOC	CW	YG	MARB	BF	REA	API	TI	
EPD	13.9	2.4	70.2	113.3	0.27	7.6	23.1	58.1	21.3	13.4	37.3	-0.43	-0.11	-0.101	0.90	130.8	67.3
%			10	40	20	10	15	40	35	4	15	15			35	30	

- Dam's a young TNT Punch cow, top 1% breed for stay
- Two year old baldy bull
- Balanced EPDs
- Top 10% ADG

77

RFS EMMETH E151

RYDEEN FARMS

Homo Black | Heterozygous Polled | PB SM | Bull
BD: 3/25/17 | Tattoo: E151 | ASA#: 3309963

REMINGTON LOCK N LOAD54U

SIRE ELLINGSON LOAD UP B4022



BRANT R17K MS TOP SHELF

TNT PUNCH Y260

DAM B59

RF SKYE S15

ACT BW	90
ADJ WW	745
ADJ YW	1119
FRAME SC	6.0
ACT SC	

CE	BW	WW	YW	ADG	MCE	MILK	MWW	STAY	DOC	CW	YG	MARB	BF	REA	API	TI	
EPD	10.9	2.5	65.0	106.6	0.26	6.3	26.3	58.7	23.0	12.6	45.9	-0.35	-0.06	-0.105	0.76	130.4	64.7
%			40			35	15	35	15	30	1	25	2			35	

- Dam's another TNT Punch cow, grand dam weaned #11 in 365 day interval
- Great ADG, top 1% Stay
- Maternal bull with a super look

78

RFS EZRA E190

RYDEEN FARMS

Black | Homo Polled | PB SM | Bull
BD: 4/7/17 | Tattoo: E190 | ASA#: 3310002

REMINGTON LOCK N LOAD54U

SIRE ELLINGSON LOAD UP B4022

BRANT R17K MS TOP SHELF

RF DEWPOINT W78

DAM RFS MISS ACHIEVE A168

W53

ACT BW	86
ADJ WW	822
ADJ YW	1163
FRAME SC	5.75
ACT SC	

CE	BW	WW	YW	ADG	MCE	MILK	MWW	STAY	DOC	CW	YG	MARB	BF	REA	API	TI	
EPD	11.3	1.7	61.2	93.2	0.20	4.4	24.7	55.2	19.8	13.9	26.2	-0.55	-0.18	-0.112	1.07	117.2	60.7
%			35	50			25		15	10		10		45	10		

- Dam is a powerful all black Dewpoint female in top 2% for milk
- Big, all black, long bodied fellow
- Balanced EPDs
- Top 10% REA

79

RFS ESCALADE E124

RYDEEN FARMS

Red | Homo Polled | PB SM | Bull

BD: 3/19/17 | Tattoo: E124 | ASA#: 3309936

WS PRIME BEEF Z8

SIRE ELLINGSON PATRIOT C520

ELLINGSON MS DAKOTA Z252

KS SUNDANCE KID S28

DAM RFS MISS Z15

X73

ACT BW	90
ADJ WW	780
ADJ YW	1163
FRAME SC	6.0
ACT SC	



LOT 79

CE	BW	WW	YW	ADG	MCE	MILK	MWW	STAY	DOC	CW	YG	MARB	BF	REA	API	TI
8.7	2.3	78.9	120.3	0.26	5.3	18.3	57.7	21.0	10.1	41.2	-0.41	0.20	-0.093	0.96	142.2	78.4
EPD																
%		15	10	15	50		40	5		10		15		20	10	10

- Dam's a moderate framed, all red female
- Top 10% API, TI
- Nice red, non-diluted 2 year old
- Hard to find better

80

RFS EXPAND E79

RYDEEN FARMS

Homo Black | Homo Polled | PB SM | Bull

BD: 3/12/17 | Tattoo: E79 | ASA#: 3309891

3C W/C RIGHT TRACK W9462

SIRE W/C WIDE TRACK 694Y

MISS WERNING 694S

MR NLC SUPERIOR S6018

DAM X97

RF MISS J159

ACT BW	94
ADJ WW	743
ADJ YW	1082
FRAME SC	5.5
ACT SC	



2 YEAR OLD BULLS

CE	BW	WW	YW	ADG	MCE	MILK	MWW	STAY	DOC	CW	YG	MARB	BF	REA	API	TI
5.4	4.1	66.4	97.3	0.19	0.1	19.6	52.7	19.3	10.7	18.2	-0.48	0.02	-0.111	0.77	116.0	63.7
EPD																
%								25	50		45	50	45			

- Dam is a 9 year old Superior cow
- Long-sided, wide top, Wide Track son
- Use him on cow to wean the best

Watch & bid online for FREE at

DVAuction

Broadcasting Real-Time Auctions



Can't make the sale? Bid from home with DV Auction's "real-time" internet bidding service!

Buying online is as easy as 1, 2, 3...

1. Create an account at www.dvauction.com under the "register" tab
2. Apply for bidding approval by clicking on the "details" tab at least 24 hours prior to the auction-a DV representative will notify you once you have been approved
3. Tune in for the sale and make your purchases!

After the sale, contact the sale manager or owner to arrange transportation and payment. **High speed internet** is required for successful bidding-be sure to check the lag-time monitor in the top left corner to ensure real-time broadcasts.

Proxy Bidding-if you can't make time to watch the sale, register a proxy bid and let our system represent your bid while you're away. Look for the "proxy bid" tab on the auction listing, and fill in your maximum bids. We'll handle the rest!

Having troubles? During the auction, you can type a message to the operator at any time for assistance. Our full-time support team can also always be reached at (402) 474-5557.

DVAuction

Broadcasting Real-Time Auctions

Full Service Livestock Marketing

Video - Photography - The Stock Exchange - Ring Service - Banner Ads - Onsite Viewing Service

MEET OUR NEW HERD SIRES



KBHR NEXT LEVEL E206



CDI SCHATZ OUTLAW 220E



KBHR KINGSMAN E144

BRED HEIFERS

REFERENCE SERVICE SIRES

PUREBRED SIMMENTAL REFERENCE SIRES

Name	ASA #	Sire x Dam	Breeds	CE	BW	WW	YW	ADG	MCE	Milk	MW	API	TI
HOOK'S BEACON 56B	2854180	Hooks Shear Force 38K x Hooks Zafirah 41Z	PB SM	17.4	-3.0	74.4	111.5	0.23	11.4	26.0	63.1	183.4	94.3
HOOKS SHEAR FORCE 38K	2081939	Nichols Legacy G151 x C&D Tracy	PB SM	17.8	-2.8	63.8	88.1	0.15	10.3	29.1	60.9	169.6	81.2
HTP SVF IN DEW TIME	2285555	CNS Dream On L186 x HTP SVF Honeydew	PB SM	14.9	0.1	65.0	83.8	0.12	6.4	13.0	45.4	137.2	70.7
WS ALL ABOARD B80	2852207	WS All-Around Z35 x WS Little Sister W37	PB SM	15.2	-0.4	97.5	144.6	0.29	9.3	12.8	61.5	169.8	96.9
WS PROCLAMATION E202	3254156	CCR Cowboy Cut 5048Z x WS Miss Sugar C4	PB SM	17.0	0.8	84.3	127.6	0.27	11.4	34.2	76.3	152.3	89.2

PUREBRED ANGUS REFERENCE SIRES (ASA EPDS)

Name	ASA #	Sire x Dam	Breeds	CE	BW	WW	YW	ADG	MCE	Milk	MW	API	TI
G A R PROPHET	2545802	C R A Bextor 872 5205 608 x G A R Objective 1885	PB AN	16.9	-1.0	83.7	136.1	0.33	11.5	29.2	70.9	164.8	95.0

SIMANGUS REFERENCE SIRES

Name	ASA #	Sire x Dam	Breeds	CE	BW	WW	YW	ADG	MCE	Milk	MW	API	TI
CDI 49ER 257D	3152330	TJ Main Event 503B x CDI Ms Yesterday 29B	3/4SM 1/4AN	18.4	-1.7	78.0	113.5	0.22	9.0	27.4	66.3	146.5	83.3
CDI BIG TIME 297D	3152402	WS Prime Time B6 x CDI Ms Irene 1B	3/4 SM 1/8 AN 1/8 AR	14.3	0.5	90.6	139.7	0.31	8.4	21.9	67.2	171.0	92.4
KBHR NEXT LEVEL E206	3312199	GW National 231C x KBHR C095	1/2 SM 1/2 AN	16.4	-1.9	68.8	118.1	0.31	10.4	28.0	62.3	169.8	88.2

81**RFS MISS EMILY E12****RYDEEN FARMS****Red | Homo Polled | PB SM | Cow**

BD: 3/3/17 | Tattoo: E12 | ASA#: 3309822 | Adj. BW: 82 | Adj. WW: 671

GW REDESTINED 642X

SIRE RFS BULLETPROOF B42

RFS MISS Z119



MRL RINGMAN 112Z

DAM B36

Y142

PROJECTED EPDS						
CE	11.1					
BW	0.5					
WW	82.5					
YW	123.1					
MCE	7.4					
MILK	24.5					
MWW	65.7					

	CE	BW	WW	YW	ADG	MCE	MILK	MWW	STAY	DOC	CW	YG	MARB	BF	REA	API	TI
EPD	7.0	1.4	67.4	101.6	0.21	5.4	36.2	69.8	21.6	6.7	49.3	-0.42	0.17	-0.113	0.96	125.5	68.6
%		45		50	50	50	1	2	3		1		20	45	20	45	

- Dam's top 1% for milk
- Great red bred should stay, but offering our best
- Ultrasound safe to AI, predicts March 4 calf
- AI'd on 5/23/19 to ALL ABOARD, PE to BIG TIME 6/21-7/30

**LOT 81****82****RFS MISS EMMA E206****RYDEEN FARMS****Red | Heterozygous Polled | PB SM | Cow**

BD: 4/21/17 | Tattoo: E206 | ASA#: 3310019 | Adj. BW: 90 | Adj. WW: 699

R PLUS HARD ROCK 145X

SIRE ELLINGSON COMPLETE A358

ELLINGSON MS AMIGO X5



TNT GUNNER N208

DAM X9

RF SISSY S12

PROJECTED EPDS						
CE	11.5					
BW	1.5					
WW	87.9					
YW	127.7					
MCE	7.4					
MILK	16.2					
MWW	60.1					

	CE	BW	WW	YW	ADG	MCE	MILK	MWW	STAY	DOC	CW	YG	MARB	BF	REA	API	TI
EPD	7.7	3.4	78.3	110.7	0.20	5.4	19.6	58.7	17.1	12.5	33.3	-0.53	-0.21	-0.135	0.91	107.4	66.4
%			15	25		50		30		25	30	20		10	30		

- Dam weaned 7, grand dam weaned 8 at RFS
- Dark, cherry red
- Ultrasound safe to AI, predicts March 4 bull calf
- AI'd on 5/23/19 to ALL ABOARD, PE to BIG TIME 6/21-7/30

**LOT 82****83****RFS MISS EVELYN E171****RYDEEN FARMS****Red | Homo Polled | PB SM | Cow**

BD: 3/31/17 | Tattoo: E171 | ASA#: 3309983 | Adj. BW: 70 | Adj. WW: 672

R PLUS HARD ROCK 145X

SIRE ELLINGSON COMPLETE A358

ELLINGSON MS AMIGO X5



HOOKS SHEAR FORCE 38K

DAM HOOK'S WRANGLER 93W

HOOKS KITTY 150J

PROJECTED EPDS						
CE	11.0					
BW	1.4					
WW	88.2					
YW	128.9					
MCE	7.5					
MILK	18.8					
MWW	62.8					

	CE	BW	WW	YW	ADG	MCE	MILK	MWW	STAY	DOC	CW	YG	MARB	BF	REA	API	TI
EPD	6.8	3.1	78.8	113.1	0.21	5.7	24.7	64.1	18.9	13.8	29.8	-0.46	-0.08	-0.116	0.80	117.9	70.5
%			15	20	50	45	25	10	30	15	45			45			45

- Dam's a Shear Force and a full sib to 35R Radar
- Wonderful, solid red female
- Ultrasound safe to AI, predicts March 4 bull calf
- AI'd on 5/23/19 to ALL ABOARD, PE to BIG TIME 6/21-7/30

**84****RFS MISS ELLA E216****RYDEEN FARMS****Red | Homo Polled | PB SM | Cow**

BD: 5/3/17 | Tattoo: E216 | ASA#: 3310029 | Adj. BW: 79 | Adj. WW: 624

R PLUS HARD ROCK 145X

SIRE ELLINGSON COMPLETE A358

ELLINGSON MS AMIGO X5



TNT GUNNER N208

DAM X14

RF RHEA

PROJECTED EPDS						
CE	11.5					
BW	0.6					
WW	83.4					
YW	119.2					
MCE	7.7					
MILK	12.3					
MWW	54.0					

	CE	BW	WW	YW	ADG	MCE	MILK	MWW	STAY	DOC	CW	YG	MARB	BF	REA	API	TI
EPD	7.8	1.6	69.3	93.8	0.15	6.0	11.8	46.4	19.7	10.8	22.7	-0.41	-0.09	-0.097	0.69	117.8	64.6
%		50	45			40				20	50						

- Dam ratios (104 (7) BW)
- Moderate framed Complete female
- Ultrasound safe to AI, predicts March 4 heifer calf
- AI'd on 5/23/19 to ALL ABOARD, PE to BIG TIME 6/21-7/30

**LOT 84****BRED HEIFERS**

85 | RFS MISS ESTHER E200

RYDEEN FARMS

Red | Homo Polled | PB SM | Cow

BD: 4/13/17 | Tattoo: E200 | ASA#: 3310012 | Adj. BW: 87 | Adj. WW: 658

SIRE **ELLINGSON COMPLETE A358**
R PLUS HARD ROCK 145X



ELLINGSON MS AMIGO X5

DAM **W4**

RF RIVER

PROJECTED EPDS	
CE	12.0
BW	0.8
WW	84.7
YW	124.4
MCE	7.9
MILK	16.0
MWW	58.3

EPD	CE	BW	WW	YW	ADG	MCE	MILK	MWW	STAY	DOC	CW	YG	MARB	BF	REA	API	TI
	8.8	2.0	71.8	104.2	0.20	6.5	19.2	55.0	19.9	14.2	25.7	-0.46	-0.04	-0.109	0.81	124.4	68.6
%			35	45		30			15	10						50	

- Dam's a great one 102 (8) BW, 102 (8) WW
- Top 2% milk
- Ultrasound safe to AI, predicts March 23 calf
- AI'd on 6/11/19 to ALL ABOARD, PE to BIG TIME 6/21-7/30

86 | RFS MISS ERIN E131

RYDEEN FARMS

Red | Homo Polled | PB SM | Cow

BD: 3/20/17 | Tattoo: E131 | ASA#: 3309943 | Adj. BW: 90 | Adj. WW: 627

SIRE **ELLINGSON COMPLETE A358**
R PLUS HARD ROCK 145X



ELLINGSON MS AMIGO X5

DAM **RFS MISS ALUMNI A78**

Y109

PROJECTED EPDS	
CE	11.9
BW	1.3
WW	86.1
YW	123.6
MCE	7.9
MILK	12.0
MWW	55.0

EPD	CE	BW	WW	YW	ADG	MCE	MILK	MWW	STAY	DOC	CW	YG	MARB	BF	REA	API	TI
	8.6	3.0	74.7	102.6	0.17	6.5	11.2	48.5	18.2	7.7	32.8	-0.54	-0.03	-0.138	0.89	119.7	68.5
%			25	45		30			40		30	15		10	35		

- Dam's an all red Bombardier in the top 10% MCE
- Ultrasound safe to AI, predicts March 25 calf
- AI'd on 6/13/19 to ALL ABOARD, PE to BIG TIME 6/21-7/30

87 | RFS MISS ERICA E128

RYDEEN FARMS

Red | Homo Polled | PB SM | Cow

BD: 3/19/17 | Tattoo: E128 | ASA#: 3309940 | Adj. BW: 97 | Adj. WW: 733

SIRE **ELLINGSON COMPLETE A358**
R PLUS HARD ROCK 145X



ELLINGSON MS AMIGO X5

DAM **BBS TEDDY X10**

BBS MISS TOPGUN U228

PROJECTED EPDS	
CE	10.6
BW	1.8
WW	89.4
YW	131.3
MCE	6.8
MILK	15.6
MWW	60.2

EPD	CE	BW	WW	YW	ADG	MCE	MILK	MWW	STAY	DOC	CW	YG	MARB	BF	REA	API	TI
	6.0	4.0	81.3	117.9	0.23	4.2	18.3	58.9	16.6	7.4	29.4	-0.46	-0.08	-0.119	0.76	111.8	70.2
%			10	15	35			30			45			45			45

- Dam was purchased as a bred from Bata Bros.
- Top 10% WW
- Ultrasound safe to AI, predicts March 4 bull calf
- AI'd on 5/23/19 to ALL ABOARD, PE to BIG TIME 6/21-7/30

88 | RFS MISS EVE E153

RYDEEN FARMS

Black | Homo Polled | PB SM | Cow

BD: 3/26/17 | Tattoo: E153 | ASA#: 3309965 | Adj. BW: 90 | Adj. WW: 737

SIRE **ELLINGSON COMPLETE A358**
R PLUS HARD ROCK 145X



ELLINGSON MS AMIGO X5

DAM **RFS MISS T18**

RFS MISS R145

PROJECTED EPDS	
CE	11.7
BW	1.4
WW	87.3
YW	127.3
MCE	7.2
MILK	18.2
MWW	61.8

EPD	CE	BW	WW	YW	ADG	MCE	MILK	MWW	STAY	DOC	CW	YG	MARB	BF	REA	API	TI
	8.2	3.2	77.0	110.0	0.21	5.1	23.5	62.0	18.4	14.1	24.8	-0.53	0.05	-0.121	0.91	125.3	73.0
%			15	30	50		35	15	35	10		20	45	20	30	50	30

- Dam's weaned 10 at RFS ratios (104 (10) WW)
- Ultrasound safe to AI, predicts March 4 heifer calf
- AI'd on 5/23/19 to ALL ABOARD, PE to BIG TIME 6/21-7/30



LOT 86

We encourage you to pick up your bred heifers as soon as possible as their calving date is close to sale date. We prefer that they get home and settled in before calving.



LOT 88

BRED HEIFERS

89**RFS MISS EWA E172****RYDEEN FARMS****Red | Homo Polled | PB SM | Cow**

BD: 4/1/17 | Tattoo: E172 | ASA#: 3309984 | Adj. BW: 80 | Adj. WW: 624

R PLUS HARD ROCK 145X

SIRE ELLINGSON COMPLETE A358

ELLINGSON MS AMIGO X5



GCF MR AMIGO

DAM Z34

RF RAINBOW

PROJECTED EPDS

CE	13.5
BW	0.8
WW	85.6
YW	122.3
MCE	7.7
MILK	12.8
MWW	55.5

EPD	CE	BW	WW	YW	ADG	MCE	MILK	MWW	STAY	DOC	CW	YG	MARB	BF	REA	API	TI
	11.7	1.9	73.7	100.0	0.16	6.1	12.7	49.5	18.6	11.1	23.5	-0.43	0.00	-0.102	0.74	126.5	69.9
%	30		25			35			35	45						45	45

- Dam's calved out 4 (all below average BW)
- Dark red bred
- Ultrasound safe to AI, predicts March 22 calf
- AI'd on 5/23/19 to ALL ABOARD, PE to BIG TIME 6/21-7/30

**LOT 89****90****RFS MISS ELENA E180****RYDEEN FARMS****Red | Homo Polled | PB SM | Cow**

BD: 4/2/17 | Tattoo: E180 | ASA#: 3309992 | Adj. BW: 83 | Adj. WW: 630

R PLUS HARD ROCK 145X

SIRE ELLINGSON COMPLETE A358

ELLINGSON MS AMIGO X5



GW REDESTINED 642X

DAM B133

W61

PROJECTED EPDS

CE	11.2
BW	1.2
WW	86.9
YW	127.7
MCE	7.1
MILK	15.3
MWW	58.7

EPD	CE	BW	WW	YW	ADG	MCE	MILK	MWW	STAY	DOC	CW	YG	MARB	BF	REA	API	TI
	7.1	2.8	76.3	110.8	0.22	4.8	17.8	55.9	18.6	10.5	21.8	-0.43	0.04	-0.091	0.79	124.1	71.7
%			20	25	40			50	35				45			50	35

- Dam ratios 103 (3) BW, good cow
- Ultrasound safe to AI, predicts March 5 heifer calf
- AI'd on 5/24/19 to ALL ABOARD, PE to BIG TIME 6/21-7/30

**91****RFS MISS ELISE E184****RYDEEN FARMS****Red | Homo Polled | PB SM | Cow**

BD: 4/4/17 | Tattoo: E184 | ASA#: 3309996 | Adj. BW: 85 | Adj. WW: 631

R PLUS HARD ROCK 145X

SIRE ELLINGSON COMPLETE A358

ELLINGSON MS AMIGO X5



BBS PHALTLINE P5

DAM W200

RS REBA R72

PROJECTED EPDS

CE	12.3
BW	1.7
WW	85.5
YW	125.1
MCE	7.8
MILK	17.7
MWW	60.3

EPD	CE	BW	WW	YW	ADG	MCE	MILK	MWW	STAY	DOC	CW	YG	MARB	BF	REA	API	TI
	9.4	3.8	73.4	105.5	0.20	6.2	22.5	59.1	14.4	10.3	26.5	-0.48	-0.120	0.79	108.2	66.4	
%			30	40		35	45	30				45		45			

- Dam's weaned 8 at RFS and top 10% of breed for milk
- Ultrasound predicts early May calf
- AI'd on 5/23/19 to ALL ABOARD, PE to BIG TIME 6/21-8/20

**LOT 91****92****RFS MISS EFFIE E205****RYDEEN FARMS****Red | Homo Polled | 3/4 SM 1/4 AR | Cow**

BD: 4/18/17 | Tattoo: E205 | ASA#: 3310018 | Adj. BW: 86 | Adj. WW: 714

R PLUS HARD ROCK 145X

SIRE ELLINGSON COMPLETE A358

ELLINGSON MS AMIGO X5



LCC MAJOR LEAGUE A502M

DAM U8

RF SALVIA S82

PROJECTED EPDS

CE	11.9
BW	1.1
WW	86.8
YW	126.6
MCE	7.3
MILK	17.5
MWW	60.9

EPD	CE	BW	WW	YW	ADG	MCE	MILK	MWW	STAY	DOC	CW	YG	MARB	BF	REA	API	TI
	8.5	2.5	76.0	108.5	0.20	5.2	22.2	60.2	15.0	15.0	40.6	-0.34	-0.13	-0.079	0.83	97.6	63.1
%			15	30			50	20		10	15	25		20	15		

- Dam's a Major League, ratio 103 (8)BW, 102 (8) WW
- Ultrasound predicts early May calf
- AI'd on 6/11/19 to ALL ABOARD, PE to BIG TIME 6/21-8/20

**BRED HEIFERS**

93 | RFS MISS ECHO E140

RYDEEN FARMS

Red | Homo Polled | PB SM | Cow

BD: 3/22/17 | Tattoo: E140 | ASA#: 3309952 | Adj. BW: 95 | Adj. WW: 686

SIRE ELLINGSON COMPLETE A358



DAM W80

R PLUS HARD ROCK 145X

ELLINGSON MS AMIGO X5

WS BEEF MAKER R13

RBS RF P87

PROJECTED EPDS

CE	11.7
BW	1.9
WW	90.7
YW	133.0
MCE	8.0
MILK	16.5
MWW	61.8

EPD	CE	BW	WW	YW	ADG	MCE	MILK	MWW	STAY	DOC	CW	YG	MARB	BF	REA	API	TI
	8.1	4.1	83.9	121.4	0.23	6.6	20.1	62.0	19.0	15.2	29.3	-0.54	0.00	-0.124	0.97	124.7	74.5
%			4	10	35	30		15	30	5	50	15		20	20	50	25

- Dam has weaned 8 and sits at top 2% for milk and docility
- Ranked top 4 % WW, top 10% YW
- Ultrasound safe to AI, predicts March 22 calf
- AI'd on 6/10/19 to ALL ABOARD, PE to BIG TIME 6/21-7/30

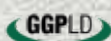
94 | RFS MISS ESTEL E199

RYDEEN FARMS

Red | Homo Polled | PB SM | Cow

BD: 4/12/17 | Tattoo: E199 | ASA#: 3310011 | Adj. BW: 86 | Adj. WW: 701

SIRE ELLINGSON COMPLETE A358



DAM WS MISS REDNECK Z159

R PLUS HARD ROCK 145X

ELLINGSON MS AMIGO X5

WS RED THUNDER W108

WS MISS KGB U179

PROJECTED EPDS

CE	10.5
BW	1.5
WW	87.2
YW	128.9
MCE	6.7
MILK	17.3
MWW	60.8

EPD	CE	BW	WW	YW	ADG	MCE	MILK	MWW	STAY	DOC	CW	YG	MARB	BF	REA	API	TI
	5.7	3.4	76.9	113.1	0.23	4.0	21.7	60.1	17.1	10.8	38.3	-0.51	-0.05	-0.118	1.03	114.2	69.7
%			15	20	35		50	25		50	15	25		45	15		50

- Dam was purchased from Wilkinson Farms and ranks in top 1% for milk
- Ultrasound safe to AI, predicts March 4 heifer calf
- AI'd on 5/23/19 to ALL ABOARD, PE to BIG TIME 6/21-7/30

95 | RFS MISS ETTA E92

RYDEEN FARMS

Homo Black | Homo Polled | PB SM | Cow

BD: 3/14/17 | Tattoo: E92 | ASA#: 3309904 | Adj. BW: 83 | Adj. WW: 651

SIRE SVF ALLEGIANCE Y802



DAM X50

MR NLC UPGRADE U8676

DOUBLE R MISS 29G T18

HTP SVF IN DEW TIME

OLF LADY JOKER P848

PROJECTED EPDS

CE	14.3
BW	1.4
WW	81.4
YW	121.7
MCE	9.1
MILK	28.0
MWW	68.7

EPD	CE	BW	WW	YW	ADG	MCE	MILK	MWW	STAY	DOC	CW	YG	MARB	BF	REA	API	TI
	11.6	1.9	78.5	115.7	0.23	6.8	21.8	61.0	15.4	12.1	44.7	-0.39	0.02	-0.094	0.93	124.5	74.6
%	30		15	20	35	25	50	20		30	3		50		30	50	25

- Hard to part with this gal
- Dam's a deep bodied In Dew Time that has other Vision Sale favorites
- Ultrasound predicts late March calf
- AI'd on 5/23/19 to PROCLAMATION, PE to Next Level 6/6-6/21

96 | RFS MISS ELRENE E41

RYDEEN FARMS

Homo Black | Homo Polled | 3/8 SM 5/8 AN | Cow

BD: 3/8/17 | Tattoo: E41 | ASA#: 3309852 | Adj. BW: 93 | Adj. WW: 631

SIRE KBHR COMPASS C324



DAM CSA SECOND CHANCE 3044

CCR GRAVITY 9064A

KBHR Y142

S A V IRON MOUNTAIN 8066

CSA SECOND CHANCE 3044

CSA SECOND CHANCE 754

PROJECTED EPDS

CE	10.1
BW	0.1
WW	77.0
YW	119.0
MCE	7.6
MILK	20.8
MWW	59.3

EPD	CE	BW	WW	YW	ADG	MCE	MILK	MWW	STAY	DOC	CW	YG	MARB	BF	REA	API	TI
	2.8	3.1	79.6	126.5	0.29	3.8	15.6	55.4	15.9	11.0	58.3	-0.11	0.49	-0.017	0.84	121.0	75.7
%			10	5	10			45	45		1	20		20	15		25

- Dam's a PB angus from Carlsson Angus, Thief River Falls
- Solid black Compass
- Ultrasound predicts late March calf
- AI'd on 5/23/19 to BEACON, PE to Next Level 6/6-6/21



LOT 93



LOT 94



LOT 95



LOT 96

BRED HEIFERS

97 | RFS MISS ELAINE E155

RYDEEN FARMS

Homo Black | Homo Polled | 3/4 SM 1/4 AN | Cow

BD: 3/26/17 | Tattoo: E155 | ASA#: 3309967 | Adj. BW: 84 | Adj. WW: 679

REMINGTON LOCK N LOADS4U

SIRE ELLINGSON LOAD UP B4022

BRANT R17K MS TOP SHELF



MYTTY IN FOCUS

DAM X3

U43

PROJECTED EPDS	
CE	15.2
BW	-0.5
WW	72.1
YW	108.9
MCE	7.6
MILK	25.0
MWW	60.9

	CE	BW	WW	YW	ADG	MCE	MILK	MWW	STAY	DOC	CW	YG	MARB	BF	REA	API	TI
EPD	12.0	0.8	66.2	104.2	0.24	6.2	22.5	55.5	19.0	15.8	29.3	-0.34	0.08	-0.067	0.80	123.1	65.8
%	50		45	40	35		45	45	15	5		25		30	20		

- Dam's a Mytty in Focus in the top 2% stay, 3% docility, 5% API
- Ultrasound safe to AI, predicts a March 4 bull calf
- AI'd on 5/23/19 to 49eR, PE to Next Level 6/6-6/21



LOT 97

98 | RFS MISS ELOISE E210

RYDEEN FARMS

Hetero Black | Homo Polled | PB SM | Cow

BD: 4/26/17 | Tattoo: E210 | ASA#: 3310023 | Adj. BW: 88 | Adj. WW: 635

REMINGTON LOCK N LOADS4U

SIRE ELLINGSON LOAD UP B4022

BRANT R17K MS TOP SHELF



SVF/NJC BUILT RIGHT N48

DAM BRANT AMELIA A52

BRANT MACHO MAE U215M

PROJECTED EPDS	
CE	13.9
BW	0.4
WW	66.2
YW	107.4
MCE	8.1
MILK	23.4
MWW	56.4

	CE	BW	WW	YW	ADG	MCE	MILK	MWW	STAY	DOC	CW	YG	MARB	BF	REA	API	TI
EPD	11.3	2.6	63.6	96.7	0.21	5.8	18.7	50.5	22.6	8.2	25.1	-0.48	-0.18	-0.106	0.86	121.8	60.1
%	35				50	40			1			45			45		

- Dam was purchased from Brant Farms
- Ultrasound safe to AI, predicts March 4 heifer calf
- AI'd on 5/23/19 to NEXT LEVEL, PE to Next Level 6/6-6/21



6729

99 | RFS MISS EILEEN E116

RYDEEN FARMS

Homo Black | Homo Polled | PB SM | Cow

BD: 3/17/17 | Tattoo: E116 | ASA#: 3309928 | Adj. BW: 99 | Adj. WW: 712

3C W/C RIGHT TRACK W9462

SIRE W/C WIDE TRACK 694Y

MISS WERNING 694S



KBHR Y068 HARLEY

DAM B169

X78

PROJECTED EPDS	
CE	10.1
BW	1.3
WW	70.2
YW	114.9
MCE	3.8
MILK	25.5
MWW	60.6

	CE	BW	WW	YW	ADG	MCE	MILK	MWW	STAY	DOC	CW	YG	MARB	BF	REA	API	TI
EPD	3.7	4.5	71.6	111.7	0.25	-2.8	23.0	58.8	20.0	10.0	42.7	-0.50	-0.10	-0.118	1.06	111.8	64.0
%			35	25	20		40	30	15		5	30		45	10		

- Dam has been a good one, ranks top 3%, milk and MWW
- Ultrasound predicts late March calf
- AI'd on 5/23/19 to NEXT LEVEL, PE to Next Level 6/6-6/21



LOT 99

100 | RFS MISS ELIZA E195

RYDEEN FARMS

Homo Black | Homo Polled | PB SM | Cow

BD: 4/10/17 | Tattoo: E195 | ASA#: 3310007 | Adj. BW: 78 | Adj. WW: 560

REMINGTON LOCK N LOADS4U

SIRE ELLINGSON LOAD UP B4022

BRANT R17K MS TOP SHELF



HTP SVF IN DEW TIME

DAM B47

RF NEVA

PROJECTED EPDS	
CE	13.4
BW	0.3
WW	68.7
YW	112.2
MCE	7.4
MILK	23.9
MWW	58.1

	CE	BW	WW	YW	ADG	MCE	MILK	MWW	STAY	DOC	CW	YG	MARB	BF	REA	API	TI
EPD	10.4	2.4	68.6	106.2	0.24	4.4	19.7	53.9	20.7	12.0	37.0	-0.47	-0.22	-0.110	0.98	117.2	62.4
%	45		50	40	25		45	45	10	30	15	50		45	20		

- Dam's weaned 3, ratios (104 (3) BW)
- Moderate framed baldy
- Ultrasound predicts late March calf
- AI'd on 5/24/19 to NEXT LEVEL, PE to Next Level 6/6-6/21



LOT 100

BRED HEIFERS



LOT 101



LOT 102



LOT 104

101 | RFS MISS ELLEN E113

RYDEEN FARMS | Hetero Black | Homo Polled | PB SM | Cow
 BD: 3/16/17 | Tattoo: E113 | ASA#: 3309925 | Adj. BW: 88 | Adj. WW: 729

SIRE KBHR COMPASS C324
 CCR GRAVITY 9064A
GGPLD KBHR Y142
 RF BLK RUBY K58
DAM RF REPRESENT
 SHOESTRING BIKS J109

PROJECTED EPDS	
CE	11.2
BW	1.3
WW	77.5
YW	123.5
MCE	7.9
MILK	23.9
MWW	62.5

EPD	CE	BW	WW	YW	ADG	MCE	MILK	MWW	STAY	DOC	CW	YG	MARB	BF	REA	API	TI
	5.9	4.5	86.1	128.9	0.27	5.3	19.7	62.7	21.3	10.6	34.0	-0.46	0.00	-0.104	0.94	126.9	74.7
%			3	3	10	50		15	4	50	25				25	45	20

- Dam has birthed 11 calves at RFS in a 365 day interval
- Top 3% of breed for weaning and yearling EPD
- Ultrasound safe to AI, predicts March 4 heifer calf
- AI'd on 5/23/19 to NEXT LEVEL, PE to Next Level 6/6-6/21

102 | RFS MISS ELEANOR E215

RYDEEN FARMS | Homo Black | Homo Polled | PB SM | Cow
 BD: 5/3/17 | Tattoo: E215 | ASA#: 3310028 | Adj. BW: 87 | Adj. WW: 588

SIRE ELLINGSON LOAD UP B4022
 REMINGTON LOCK N LOAD54U
GGPLD BRANT R17K MS TOP SHELF
 TNT TANKER U263
DAM B23
 Y57

PROJECTED EPDS	
CE	12.9
BW	0.1
WW	68.6
YW	113.5
MCE	7.4
MILK	24.9
MWW	59.1

EPD	CE	BW	WW	YW	ADG	MCE	MILK	MWW	STAY	DOC	CW	YG	MARB	BF	REA	API	TI
	9.3	2.0	68.3	108.8	0.25	4.3	21.8	55.9	18.3	13.6	28.9	-0.50	-0.25	-0.109	0.97	111.0	62.4
%			50	30	20		50	50	40	15	50	30			20		

- Dam and grand dam are great, productive cows
- Ultrasound safe to AI, predicts March 4 bull calf
- AI'd on 5/23/19 to NEXT LEVEL, PE to Next Level 6/6-6/21

103 | RFS MISS ELLIE E203

RYDEEN FARMS | Homo Black | Homo Polled | 3/4 SM 1/4 AN | Cow
 BD: 4/17/17 | Tattoo: E203 | ASA#: 3310016 | Adj. BW: 86 | Adj. WW: 686

SIRE ELLINGSON LOAD UP B4022
 REMINGTON LOCK N LOAD54U
GGPLD BRANT R17K MS TOP SHELF
 HART FINAL ANSWER 0048
DAM B213
 RFS MISS Z187

PROJECTED EPDS	
CE	11.7
BW	1.3
WW	67.2
YW	97.8
MCE	5.5
MILK	19.3
MWW	52.7

EPD	CE	BW	WW	YW	ADG	MCE	MILK	MWW	STAY	DOC	CW	YG	MARB	BF	REA	API	TI
	8.5	2.4	69.3	111.8	0.27	4.5	25.5	60.0	17.6	12.7	42.1	-0.25	0.07	-0.063	0.71	113.5	65.0
%			35	25	15		20	20	25	30	10	50		30	35		

- Dam's a young Final Answer granddaughter ranked top 10% for milk and MWW
- Ultrasound predicts early May calf
- AI'd on 5/25/19 to IN DEW TIME, PE to Next Level, 6/21-6/30, BIG TIME 6/6-6/21

104 | RFS MISS EVETTE E202

RYDEEN FARMS | Homo Black | Homo Polled | PB SM | Cow
 BD: 4/17/17 | Tattoo: E202 | ASA#: 3310014 | Adj. BW: 80 | Adj. WW: 647

SIRE ELLINGSON LOAD UP B4022
 REMINGTON LOCK N LOAD54U
GGPLD BRANT R17K MS TOP SHELF
 ELLINGSON LEGACY M229
DAM Y97
 U33

PROJECTED EPDS	
CE	13.0
BW	-0.4
WW	65.8
YW	107.3
MCE	6.1
MILK	24.6
MWW	57.4

EPD	CE	BW	WW	YW	ADG	MCE	MILK	MWW	STAY	DOC	CW	YG	MARB	BF	REA	API	TI
	9.5	1.1	62.8	96.4	0.21	1.7	21.2	52.5	21.6	13.7	15.6	-0.52	-0.10	-0.111	0.83	124.8	63.7
%			35			50			3	15		20		45	50	50	

- Dam is an exceptional Olie female with a nice udder, ranks top 5 % for milk
- Ultrasound safe to AI, predicts March 4 calf
- AI'd on 5/23/19 to NEXT LEVEL, PE to Next Level 6/6-6/21

105 | RFS MISS EDYTHE E86

RYDEEN FARMS

Homo Black | Homo Polled | PB SM | Cow

BD: 3/13/17 | Tattoo: E86 | ASA#: 3309898 | Adj. BW: 88 | Adj. WW: 655

CCR GRAVITY 9064A

SIRE KBHR COMPASS C324

KBHR Y142



GW LUCKY BREAK 047G

DAM RFS MILLIE JANE

RFS CASS H28

PROJECTED EPDS						
CE	12.7					
BW	1.2					
WW	80.3					
YW	125.6					
MCE	9.2					
MILK	22.5					
MWW	62.5					

	CE	BW	WW	YW	ADG	MCE	MILK	MWW	STAY	DOC	CW	YG	MARB	BF	REA	API	TI
EPD	8.4	3.3	76.8	115.0	0.24	6.9	15.8	54.1	19.9	10.9	23.9	-0.52	0.09	-0.112	0.93	131.4	73.3
%			20	20	25	25			15	45		20	30	45	30	30	30

- Dam was sold at 15 years, ratios 103 (13) BW
- Ultrasound safe to AI, predicts March 4 calf
- AI'd on 5/23/19 to PROPHET, PE to Next Level 6/6-6/21



LOT 105

106 | RFS MISS ELIN E220

RYDEEN FARMS

Homo Black | Homo Polled | PB SM | Cow

BD: 5/14/17 | Tattoo: E220 | ASA#: 3310033 | Adj. BW: 80 | Adj. WW: 596

REMINGTON LOCK N LOADS4U

SIRE ELLINGSON LOAD UP B4022

BRANT R17K MS TOP SHELF



SRS RIGHT-ON 22R

DAM Y141

RF SEASON S141

PROJECTED EPDS						
CE	14.5					
BW	0.1					
WW	63.1					
YW	105.3					
MCE	7.0					
MILK	28.8					
MWW	60.3					

	CE	BW	WW	YW	ADG	MCE	MILK	MWW	STAY	DOC	CW	YG	MARB	BF	REA	API	TI
EPD	12.5	2.0	57.4	92.5	0.22	3.6	29.6	58.3	20.6	13.4	26.2	-0.55	-0.21	-0.124	0.95	118.0	58.5
%			20		40		4	35	10	15		10		20	25		

- Dam's a moderate framed cow in the top 1% of breed for milk, top 5% stay
- Ultrasound predicts late March calf
- AI'd on 5/23/19 to NEXT LEVEL, PE to Next Level 6/6-6/21



KBHR NEXT LEVEL E206

107 | RFS MISS ETOLE E63

RYDEEN FARMS

Hetero Black | Homo Polled | PB SM | Cow

BD: 3/11/17 | Tattoo: E63 | ASA#: 3309875 | Adj. BW: 95 | Adj. WW: 758

CCR GRAVITY 9064A

SIRE KBHR COMPASS C324

KBHR Y142



LBR CROCKETT R81

DAM RFS MISS T86

RF MISS J159

PROJECTED EPDS						
CE	8.9					
BW	2.0					
WW	80.9					
YW	129.7					
MCE	5.6					
MILK	22.2					
MWW	62.6					

	CE	BW	WW	YW	ADG	MCE	MILK	MWW	STAY	DOC	CW	YG	MARB	BF	REA	API	TI
EPD	1.4	5.9	93.0	141.2	0.30	0.8	16.4	62.9	20.1	11.7	43.3	-0.43	0.18	-0.098	1.01	129.4	80.6
%			1	1	2			15	15	35	4		15		15	35	5

- Dam weaned her 10th calf in 2018
- Deepest bodied bred in the sale, top 1% WW & YW
- Ultrasound safe to AI, predicts March 4 bull calf
- AI'd on 5/23/19 to NEXT LEVEL, PE to Next Level 6/6-6/21



LOT 107

108 | RFS MISS EUNICE E108

RYDEEN FARMS

Homo Black | Homo Polled | 5/8 SM 3/8 AN | Cow

BD: 3/15/17 | Tattoo: E108 | ASA#: 3309920 | Adj. BW: 97 | Adj. WW: 711

CCR GRAVITY 9064A

SIRE KBHR COMPASS C324

KBHR Y142



S A F EASY FORTUNE

DAM RF SOLITA S35

RF PLUMERIA

PROJECTED EPDS						
CE	12.3					
BW	0.4					
WW	72.6					
YW	106.0					
MCE	8.0					
MILK	21.7					
MWW	57.9					

	CE	BW	WW	YW	ADG	MCE	MILK	MWW	STAY	DOC	CW	YG	MARB	BF	REA	API	TI
EPD	6.8	3.5	81.3	123.8	0.27	5.7	14.3	54.9	22.0	11.3	30.4	-0.27	0.34	-0.058	0.66	136.5	75.9
%			5	10	15			50	1	50	50	40	40	40	45	25	25

- Dam is likely the best 1/2 blood cow we own and has sold 6 bulls in Vision Sales
- Top 5% WW, top 10% YW, top 1% stay
- Ultrasound safe to AI, predicts March 4 bull calf
- AI'd on 5/23/19 to SHEAR FORCE, PE to Next Level 6/6-6/21



LOT 108

BRED HEIFERS



LOT 109



LOT 110

109 | RFS MISS EVONNE E156

RYDEEN FARMS | Homo Black | Homo Polled | PB SM | Cow
 BD: 3/28/17 | Tattoo: E156 | ASA#: 3309968 | Adj. BW: 73 | Adj. WW: 595

SIRE ELLINGSON LOAD UP B4022
 REMINGTON LOCK N LOAD54U
DAM B78
 BRANT R17K MS TOP SHELF
 TNT DUAL FOCUS T249
 X46

PROJECTED EPDS													
CE	BW	WW	YW	ADG	MCE	MILK	MWW	STAY	DOC	CW	YG	MARB	BF
15.0	0.7	63.6	102.9	0.25	7.6	19.7	51.4	22.3	13.4	36.0	-0.41	-0.09	-0.090
%	5	25	45	20	15			2	15	20			

- Barry, here's our "Moose Tracks" !
- Dam is a solid black Dual Focus, grand dam top 1% stay
- Ultrasound safe to AI, predicts March 4 heifer calf
- AI'd on 5/23/19 to NEXT LEVEL, PE to Next Level 6/6-6/21

110 | RFS MISS EDEN E55

RYDEEN FARMS | Homo Black | Homo Polled | PB SM | Cow
 BD: 3/9/17 | Tattoo: E55 | ASA#: 3309866 | Adj. BW: 98 | Adj. WW: 746

SIRE W/C WIDE TRACK 694Y
 3C W/C RIGHT TRACK W9462
DAM U18
 MISS WERNING 694S
 GW LUCKY MAN 644N
 RF MISS RAM P284

PROJECTED EPDS													
CE	BW	WW	YW	ADG	MCE	MILK	MWW	STAY	DOC	CW	YG	MARB	BF
7.0	4.2	74.9	117.1	0.26	0.9	29.7	67.1	19.8	13.6	38.8	-0.37	0.16	-0.105
%		25	15	15		4	4	15	15	10		20	

- Dam is a calving ease, milk machine at top 1% milk, 10% API
- Top 4% for milk and MWW
- Ultrasound safe to AI, predicts March 4 bull calf
- AI'd on 5/23/19 to NEXT LEVEL, PE to Next Level 6/6-6/21

UNDERSTANDING EPDS

Expected Progeny Differences (EPDs): EPDs are the most accurate and effective tool available for comparing genetic levels. In using EPDs, the difference between two sires' EPDs represents the unit difference expected in the performance of their progeny. For example, if sires A and B have EPDs of +10 and -5, a 15-unit difference would be expected in their progeny (moving from -5 to +10 yields 15 units). Key to using EPDs is knowing in what units they are expressed. For example, if the above case referred to weaning weight EPDs, sire A would be expected to sire 15 pounds more weaning weight than sire B. If calving ease was the trait, sire A would be expected to sire 15 percent more unassisted births in first-calf heifers; in other words, if sire B sired 30 assists in a group of 100 heifers, we would expect sire A to require 15 assists. A percentile-ranking chart is required to determine where a bull's EPDs rank him relative to other bulls in the breed. For more detailed information about EPDs and \$ indexes, visit www.simmental.org. Listed below are the units in which ASA EPDs are expressed:

- Calving Ease (CE):** Percent of unassisted births when used on heifers.
- Birth Weight (BW):** Pounds of birth weight.
- Weaning Weight (WW):** Pounds of weaning weight.
- Yearling Weight (YW):** Pounds of yearling weight.
- Maternal Calving Ease (MCE):** Percent of unassisted births in first-calving daughters.
- Milk (MLK):** Pounds of weaning weight due to milk.
- Maternal Weaning Weight (MWW):** Pounds of weaning weight due to milk and growth.
- Stayability (STAY):** Percent of daughters remaining in the cowherd at six years of age.
- Docility (DOC):** Percent of offspring receiving a disposition score of 1 (docile).
- Carcass Weight (CW):** Pounds of carcass weight at 475 days.
- Yield Grade (YG):** Carcass yield grade score at 475 days.
- Marbling (Marb):** Carcass marbling score at 475 days.

- Back Fat (BF):** Inches of carcass back fat at 475 days.
- Ribeye Area (REA):** Square inches of carcass ribeye at 475 days.
- Warner-Bratzler Shear Force (WBSF):** Pounds of force required to shear a rib-eye steak.
- All-Purpose Index (API):** Dollars per cow exposed under an all-purpose-sire scenario. (See \$ Indexes for more details.)
- Terminal Index (TI):** Dollars per cow exposed under a terminal-sire scenario. (See TI for more details.)
- \$ Indexes:** Though EPDs allow for the comparison of genetic levels for many economically important traits, they only provide pieces of the economic puzzle. This is where \$ indexes come in. Through well-conceived, rigorous mathematical computation, \$ indexes blend EPDs and economics to estimate an animal's overall impact on integrated commercial production. The same technology that led to the dramatic progress in swine, poultry and dairy genetics over the last several decades was used to develop the following \$ indexes:
- All-Purpose Index (API):** Evaluates sires for use on the entire cow herd (bred to both Angus first-calf heifers and mature cows) with the portion of their daughters required to maintain herd size retained and the remaining heifers and steers put on feed and sold grade and yield.
- Terminal Index (TI):** Evaluates sires for use on mature Angus cows with all offspring put on feed and sold grade and yield.
- Using API and TI:** First, determine which index to use; if you are keeping replacements use API, if not, use TI. Then, just as with EPDs, zero in on the unit difference between bulls. (As described above, index units are in dollars per cow exposed.) The difference can be used to determine how much a bull is worth compared to another. Put another way, how much you can pay for one bull compared to another. For example, when buying an all-purpose-type sire, you can quickly figure a bull scoring +100 for API is worth an extra \$6,000 over a +50 bull if both are exposed to 30 cows over 4 years (\$50 diff. x 30 hd. x 4 yr. = \$6,000). A percentile-ranking chart is required to determine where a bull's index value ranks him relative to other bulls in the breed. For more detailed information about EPDs and \$ indexes, visit: www.simmental.org

111 | RFS MISS FANCY F93

RYDEEN FARMS | Homo Black | Homo Polled | 3/4 SM 1/4 AN | Open Heifer
 BD: 3/13/18 | Tattoo: F93 | ASA#: 3462271 | Adj. BW: 89 | Adj. WW: 683 | Adj. YW: 919

CCR WIDE RANGE 9005A

SIRE BCLR WIDE LOAD C21-3

WS MOTHER LODE W21

CONNELLY IRISH 0204

DAM C6

RFS MISS ALLEGIANCE A17

	CE	BW	WW	YW	ADG	MCE	MILK	MWW	STAY	DOC	CW	YG	MARB	BF	REA	API	TI
EPD	11.8	1.6	77.0	119.1	0.26	8.2	22.2	60.6	18.5	11.4	32.9	-0.32	0.28	-0.052	0.89	134.9	75.9
%	50		10	15	20	20	50	20	20	50	40	30		40	10	30	25

- Dam's a young Conneally Irish cow in the top 10% for API
- Top 10% WW, top 15% YW
- Balanced EPDs



LOT 111

112 | RFS MISS FOXY F121

RYDEEN FARMS | Homo Black | Polled | PB SM | Open Heifer
 BD: 3/15/18 | Tattoo: F121 | ASA#: 3462299 | Adj. BW: 89 | Adj. WW: 658 | Adj. YW: 761

MR NLC UPGRADE U8676

SIRE SVF ALLEGIANCE Y802

DOUBLE R MISS 29G T18

TRIPLE C INVASION R47K

DAM RS MISS INVASION U102

SF BLK NIRVANA 414

	CE	BW	WW	YW	ADG	MCE	MILK	MWW	STAY	DOC	CW	YG	MARB	BF	REA	API	TI
EPD	13.2	1.8	75.8	111.9	0.23	5.9	22.0	59.8	17.9	16.3	35.9	-0.43	0.05	-0.112	0.80	132.7	74.3
%	15		20	25	35	40	50	25	45	2	20		45		30	25	

- Dam's a calving ease Invasion cow in the top 3% of breed for milk
- Balanced EPD package
- High API, TI, top 2% docility



LOT 112

113 | RFS MISS FAYE F137

RYDEEN FARMS | Black | Polled | PB SM | Open Heifer
 BD: 3/17/18 | Tattoo: F137 | ASA#: 3462315 | Adj. BW: 83 | Adj. WW: 695 | Adj. YW: 939

SVF ALLEGIANCE Y802

SIRE RFS CAPTAIN C21

W15

GFI RAMBLER J114

DAM U80

RFS MADELINE

	CE	BW	WW	YW	ADG	MCE	MILK	MWW	STAY	DOC	CW	YG	MARB	BF	REA	API	TI
EPD	14.9	0.4	72.3	105.4	0.21	8.6	22.3	58.4	19.1	11.7	32.9	-0.37	0.03	-0.085	0.81	137.0	73.3
%	5	20	35	40	50	10	45	35	25	35	30		50		20	30	

- Dam's a U model Rambler in the top 1% for milk
- Maybe the best data—ratios 106 BW, 110 WW, 115 YW
- Sire is at Emmons Ranch, MT



LOT 113

114 | RFS MISS FIONA F68

RYDEEN FARMS | Red | Polled | 3/4 SM 1/4 AR | Open Heifer
 BD: 3/10/18 | Tattoo: F68 | ASA#: 3462246 | Adj. BW: 79 | Adj. WW: 603 | Adj. YW: 760

R PLUS HARD ROCK 145X

SIRE ELLINGSON COMPLETE A358

ELLINGSON MS AMIGO X5

WEBR DOC HOLLIDAY 2N

DAM U1

RF SISSY S12

	CE	BW	WW	YW	ADG	MCE	MILK	MWW	STAY	DOC	CW	YG	MARB	BF	REA	API	TI
EPD	10.5	0.2	69.7	102.1	0.20	6.4	18.1	52.8	17.4	12.5	25.8	-0.34	0.01	-0.085	0.62	114.8	65.6
%		45	35	45		50			30	35		25		15			

- Dam's a 1/2 red angus ranked in the top 1% of breed for milk
- 3/4 blood female



LOT 114

OPEN HEIFERS

115 | RFS MISS FREDA F70

RYDEEN FARMS Black | Polled | 3/4 SM 1/4 AN | Open Heifer
 BD: 3/10/18 | Tattoo: F70 | ASA#: 3462248 | Adj. BW: 91 | Adj. WW: 649 | Adj. YW: 880

3C W/C RIGHT TRACK W9462

SIRE W/C WIDE TRACK 694Y

MISS WERNING 694S

HART FINAL ANSWER 0048

DAM C65

RFS MISS ACORN A184

EPD	CE	BW	WW	YW	ADG	MCE	MILK	MWW	STAY	DOC	CW	YG	MARB	BF	REA	API	TI
7.3	3.5	72.3	113.4	0.26	1.9	18.9	55.0	18.9	10.9	33.0	-0.23	0.22	-0.067	0.51	120.9	67.9	
%		25	20	20			50	15		35			30				

- Dam's a wonderful Final Answer granddaughter
- Clean fronted, deep bodied lady
- Performance cow potential

116 | RFS MISS FANNIE F104

RYDEEN FARMS Black | Homo Polled | PB SM | Open Heifer
 BD: 3/14/18 | Tattoo: F104 | ASA#: 3462282 | Adj. BW: 97 | Adj. WW: 690 | Adj. YW: 913

CCR GRAVITY 9064A

SIRE KBHR COMPASS C324

KBHR Y142

WHEATLAND RED ACE 747T

DAM BBS MISS ACE Y3

BBS MISS GUNNER W3

EPD	CE	BW	WW	YW	ADG	MCE	MILK	MWW	STAY	DOC	CW	YG	MARB	BF	REA	API	TI
5.9	3.7	86.4	127.2	0.25	4.3	18.5	61.7	15.7	6.6	36.0	-0.47	0.06	-0.121	0.88	120.8	77.4	
%		2	4	20			20			20	50	40	20	40			15

- Dam was purchased from Bata Bros as a bred
- Top 2% WW, 4% YW

117 | RFS MISS FELICE F148

RYDEEN FARMS Red | Polled | PB SM | Open Heifer
 BD: 3/19/18 | Tattoo: F148 | ASA#: 3462326 | Adj. BW: 89 | Adj. WW: 594 | Adj. YW: 840

R PLUS HARD ROCK 145X

SIRE ELLINGSON COMPLETE A358

ELLINGSON MS AMIGO X5

BBS PHALTLINE P5

DAM W200

RS REBA R72

EPD	CE	BW	WW	YW	ADG	MCE	MILK	MWW	STAY	DOC	CW	YG	MARB	BF	REA	API	TI
8.8	2.9	69.9	99.6	0.19	5.9	16.4	51.3	17.5	11.8	29.4	-0.50	-0.14	-0.120	0.88	111.4	63.6	
%		45		40			50	35	45	30		45	40				

- Dam's 10 years old, ranked top 10% for milk
- Very nice solid red, Complete female

118 | RFS MISS FLORA F175

RYDEEN FARMS Homo Black | Homo Polled | 3/4 SM 1/4 AN | Open Heifer
 BD: 4/1/18 | Tattoo: F175 | ASA#: 3462354 | Adj. BW: 92 | Adj. WW: 682 | Adj. YW: 866

CCR GRAVITY 9064A

SIRE KBHR COMPASS C324

KBHR Y142

TNT PUNCH Y260

DAM B77

U65

EPD	CE	BW	WW	YW	ADG	MCE	MILK	MWW	STAY	DOC	CW	YG	MARB	BF	REA	API	TI
5.8	3.1	80.4	124.5	0.28	4.4	23.9	64.0	19.7	11.5	49.0	-0.35	0.09	-0.091	0.90	129.3	75.5	
%		5	10	10			35	10	10	50	3	20	10	10	40	25	

- Dam's a wonderful TNT Punch ranked in top 1% for milk
- 3/4 blood that ranks in the top 5 %WW, top 10% YW
- Performance cow potential



LOT 115



LOT 116



LOT 117



LOT 118

OPEN HEIFERS

119 | RFS MISS FAITH F177

RYDEEN FARMS Red | Homo Polled | PB SM | Open Heifer
 BD: 4/2/18 | Tattoo: F177 | ASA#: 3462357 | Adj. BW: 81 | Adj. WW: 593 | Adj. YW: 842

R PLUS HARD ROCK 145X

SIRE ELLINGSON COMPLETE A358

ELLINGSON MS AMIGO X5

TNT GUNNER N208

DAM X14

RF RHEA

	CE	BW	WW	YW	ADG	MCE	MILK	MWW	STAY	DOC	CW	YG	MARB	BF	REA	API	TI
EPD	10.1	1.2	67.5	92.7	0.16	7.4	16.2	49.9	19.1	12.0	23.0	-0.41	-0.14	-0.101	0.68	117.0	63.6
%	50	40				20			25	30							

- Dam's a low birth weight Gunner cow that ratios (104 (7) BW)
- Nice, feminine fronted Complete female



LOT 119

120 | RFS MISS FLORENCE F178

RYDEEN FARMS Homo Black | Homo Polled | PB SM | Open Heifer
 BD: 4/3/18 | Tattoo: F178 | ASA#: 3462358 | Adj. BW: 93 | Adj. WW: 692 | Adj. YW: 817

CCR GRAVITY 9064A

SIRE KBHR COMPASS C324

KBHR Y142

ELM-MOUND UPGRADE Z4

DAM BRANT BEYONCE B2104

BRANT X4088

	CE	BW	WW	YW	ADG	MCE	MILK	MWW	STAY	DOC	CW	YG	MARB	BF	REA	API	TI
EPD	6.0	3.5	80.7	122.3	0.26	4.0	24.4	64.7	16.6	12.0	43.7	-0.49	-0.01	-0.111	1.09	117.5	73.3
%			10	10	15		25	10		30	4	40		45	10		30

- Dam is a Brant bred female that ranks in the top 1% for milk and MWW
- Performance cow potential ranking in the top 10% for WW and YW



LOT 120

121 | RFS MISS FRANNIE F189

RYDEEN FARMS Homo Black | Homo Polled | PB SM | Open Heifer
 BD: 4/8/18 | Tattoo: F189 | ASA#: 3462369 | Adj. BW: 90 | Adj. WW: 662 | Adj. YW: 820

CCR GRAVITY 9064A

SIRE KBHR COMPASS C324

KBHR Y142

MR NLC SUPERIOR S6018

DAM KNH SUPERIOR 146Z

RFS MISS U146

	CE	BW	WW	YW	ADG	MCE	MILK	MWW	STAY	DOC	CW	YG	MARB	BF	REA	API	TI
EPD	7.3	2.8	78.5	118.5	0.25	5.1	21.9	61.1	19.4	12.6	45.3	-0.52	-0.02	-0.118	1.17	125.1	72.8
%			15	15	20		50	20	20	25	3	20		45	3	50	30

- Dam is a Superior cow purchased from KnH Simmentals, ND
- Performance cow potential ranking in the top 15% for WW and YW



LOT 121

122 | RFS MISS FORWARD F55

RYDEEN FARMS Black | Homo Polled | PB SM | Open Heifer
 BD: 3/9/18 | Tattoo: F55 | ASA#: 3462233 | Adj. BW: 96 | Adj. WW: 660 | Adj. YW: 786

REMINGTON LOCK N LOAD54U

SIRE ELLINGSON LOAD UP B4022

BRANT R17K MS TOP SHELF

HALE BLACK DIAMOND P192

DAM Y61

W96

	CE	BW	WW	YW	ADG	MCE	MILK	MWW	STAY	DOC	CW	YG	MARB	BF	REA	API	TI
EPD	10.1	2.4	66.4	102.1	0.22	3.5	23.2	56.4	22.1	9.9	26.0	-0.53	-0.09	-0.112	0.99	125.8	64.7
%	50			50	40		35	45	2			20		45	20	45	

- Dam is an 8 year old, ranks in the top 1% for milk, 10% marbling & API
- Really a beautiful clean fronted, Load Up female



LOT 122

OPEN HEIFERS

RYDEEN FARMS

47499 199TH AVENUE
CLEARBROOK, MN 56634

First Class | Postal Carrier: Please Do Not Delay Dated Material

Genetics with
VISION

NEW DATE + TIME!
SATURDAY, FEBRUARY 9, 2019 / 2:00 PM
AT THE FARM IN CLEARBROOK, MN

RYDEEN FARMS
21ST ANNUAL PRODUCTION SALE
SIMMENTAL & SIMANGUS