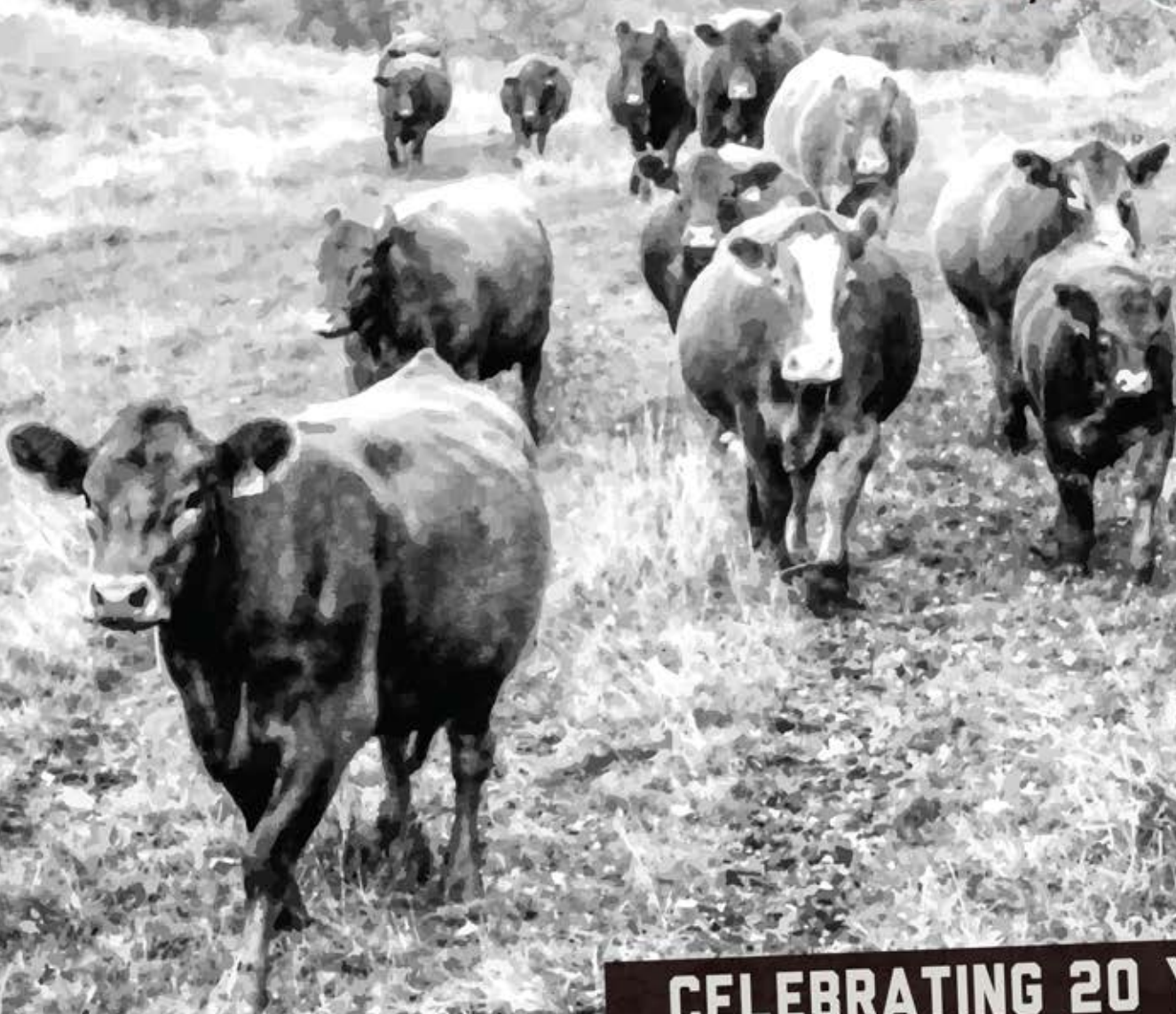


RYDEEN FARMS VISION XX

SIMMENTAL + SIMANGUS SALE

Sunday, February 11, 2018 | 1 PM
At the Farm | Clearbrook, MN
www.rydeenfarms.com



CELEBRATING 20 YEARS

RYDEEN FARMS

Dear Cattle Men and Women

Welcome to our 20th Vision Bull and Female Sale and our 39th year of selling breeding livestock! Wow, have things changed in the cattle industry in the last two decades. It is pretty exciting to see the progress that has been made in the Simmental breed since our first sale.

We were blessed with a growing season that was above average for us. Yields were good and the pastures held their condition until just before the first snowfall on October 26. Once again we did not creep feed the calves. The bulls were fence line weaned in September and both cows and calves stayed in great shape. The bulls were placing on a growing ration and have been gaining just under 3.0 ADG. We built a new bull development barn and were able to use it right away as the early snow and cold arrived and this old fashioned winter set in.

The amount of information presented to bull buyers today is staggering. This increase is especially daunting considering that you likely only use that information for a few days each year. It is our job as a seed stock producer to collect that information and present it to you in an easy to digest way. However, it is also our job to help provide service, answer your questions and offer education regarding that data. Genetic decisions have long term profit implications and we believe that we are your partner in this process. We want to make sure you take home an animal that offers great value for your investment. We have tossed around the idea of hosting an educational event for customers but, weren't sure if there would be interest. Please let us know if that is something you would be interested in attending.

Some things that have not changed in our 20 years include the drive each year to produce better bulls and females. Additionally, we believe that each animal on our sale, from the first to the last, needs to offer genetic improvement, or, we shouldn't be selling it. Our approach has always been to use a combination of science and phenotype to select animals. While we continue to invest in the science and technology associated with the beef industry, we also keep an eye on structure and eye appeal. Our bull and female development has always been focused on longevity. Lastly, but most importantly, excellent customer service and satisfaction has been a priority since the beginning.

Once again, the 18 month bulls have genomic enhanced EPD's with parent verification. This testing provides you with the most accurate EPD's available on a young herd sire. Once again, both our fall and spring herds were recognized by the American Simmental Association as a Performance Advocate. This demonstrates a commitment to record-keeping beyond the baseline data. We continue to participate in Total Herd Enrollment (THE) which offers the buyers of bred heifers the ability to register the 2018 calf at no additional cost.

After attending the educational session sponsored by the American Simmental Association in September, we decided to participate in the Cow Herd Roundup through the ASA to improve accuracy of our herd and the breed. This means we have collected DNA on each of our females, weighed all the mature cows and assessed a body condition score. Our goal is to learn more about each cow to make better breeding decisions. Because of this project, we did not invest in GE-EPDs on the yearling bulls as we expect there to be some movement in EPD's as the 50,000 DNA samples are processed.

We are excited to offer information regarding some value added programs including the IGS Feeder Profit Calculator and ASA's New Commercial Option. Russ Danielson, representing the ASA will be available sale day to answer question about these two new programs.

We hope you can join us and help celebrate our 20th Anniversary sale. We have some fun planned!

Paul Rydeen, Rydeen Farms



The Rydeen Family
Chad, Claire, Lois, Paul, and Justis

ALLIED
GENETIC RESOURCES

ASA
The
PERFORMANCE
RECORDS

ASA Performance

Advocate

VISION **XX**

SIMMENTAL + SIMANGUS SALE

FEBRUARY 11, 2018 | 1:00 PM
AT RYDEEN FARMS, CLEARBROOK, MN

Located ½ mile north of Clearbrook on #5; 3 miles east on #4 and ½ mile south on 199th Ave.

Terms and Conditions: This sale is conducted under the standard terms and conditions adopted by the American Simmental Association. If you have any questions, please contact us.

Registration Papers: Registration papers will be transferred on all animals. Please inform the clerk of your ASA number.

Feeding Arrangements: If you are unable to take your bull home on sale day, we will feed them for free until April 1, 2018. The bulls we feed will be put in with our bulls and treated the same. Successful buyers are responsible for animals purchased sale day and we are not responsible if an animal is injured after purchase. We encourage you to purchase mortality insurance. We will be semen testing bulls left here as able based on schedules. If you are interested in having your animal tested, please let us know.

Trucking: We will assist buyers in coordinating and making the most economical hauling arrangements.

Herd Health: We have completed 5 years of whole herd Johne's testing and all dams of sale cattle tested negative in 2017.

Spring 2017 born bulls were vaccinated at birth with UltraBac 8, InForce and MultiMin. They were vaccinated in the spring with Vista Once, and UltraBac 8. Prior to weaning they were given Vista Once, UltraBac 8 and MultiMin. At weaning they were given Vista Once and Clean Up II pour on. In the fall they were given InForce3, Once PMH and MultiMin and poured with Ivermectin.

Fall bulls were vaccinated in the early spring of 2017 with Vista Once, Covexin 8 and poured with Ivermectin. Early summer were given UltraBac 8 and Long Range. In the fall of 2017, they were vaccinated with Vista Once, UltraBac 8, MultiMin, and poured with Ivermectin. They were repoured in January with Ivermectin.

Bred heifers were vaccinated with UltraBac 8 and BoviShield Gold and Long Range prior to breeding. The bred heifers were ultrasounded on 7/27/2017 and 10/9/2017 for pregnancy. In the fall of 2017 they were vaccinated with UltraBac 8, In Force 3 poured with Ivermectin and Clean Up II. Bred females are Bangs vaccinated and have had two doses of Scourguard 4KC.

Open heifers were vaccinated in the spring and fall with UltraBac 8 and Vista Once and given MultiMin. They were vaccinated with InForce 3 and poured with Ivermectin in January. They are Bangs vaccinated.

Additional information: Ultrasound data will be available the day of the sale.

Semen Rights: We will retain 1/3 semen interest on all bulls sold in the sale unless specifically noted.

Livestock Insurance: Lindfors Insurance Agency will be available sale day, 218-435-6585.

Announcements: Announcements made sale day and from the auction block during the sale, take precedence over printed material in the catalog or other printed material associated with the sale. Anyone attending this sale attends at his or her own risk; we are not responsible for accidents, damages or stolen items.

SELLING 117 LOTS
47 YEARLING BULLS
25 18 MONTH OLD BULLS
36 BRED FEMALES
9 OPEN FEMALES

SUNDAY, FEBRUARY 11, 2018

9:00 a.m.

Cattle available for viewing

12:00 p.m.

Complimentary Lunch at Noon
At Rydeen Farms, Clearbrook, Minnesota

1:00 p.m.

Sale Begins

SALE DAY PHONES

Farm. 218-776-3338

Paul cell. 218-280-1916

Lois cell. 218-280-8196

Claire cell. 218-280-0384

Justis cell. 218-280-2032

View catalog, links to videos, and
ultrasound data online at
www.rydeenfarms.com

AUCTIONEER

Tracy Harl, Loup City, NE,
402-469-3852 cell

LODGING

Piper's Inn, Clearbrook, MN, 218-776-2323

SALE REPRESENTATIVES

Alex Acheson. 785-366-1185
Farm and Ranch Guide

Beau Bendigo. 605-515-3223
Cattle Business Weekly

Luke Keller. 701-471-1142
Progressive Genetic Solutions

Marty Ropp. 406-581-7835
Allied Genetic Resources

Russ Danielson. 701-261-2742
American Simmental Association

Justin Dikoff. 605-290-0635
DVAuction

DVAuction
Broadcasting Real-Time Auctions

SALE BROADCASTED ONLINE
THROUGH DVAUCTION.

Bid online at www.dvauction.com or go to page
33 (inside back cover) for more information.

REFERENCE SIRES



MCM TOP GRADE 018X



GW ROBUST 605Z



CCR COWBOY CUT 5048Z



CDI AUTHORITY 77X

PUREBRED SIMMENTAL REFERENCE SIRES

Name	ASA #	Sire x Dam	Breeds	CE	BW	WW	YW	ADG	MCE	Milk	MW	API	TI
HTP SVF IN DEW TIME	2285555	CNS Dream On L186 x HTP SVF Honeydew	PB SM	16.6	0.0	60.5	76.4	0.10	10.8	8.8	39.1	146.9	76.2
ELLINGSON DOMINATOR W905	2510801	Ellingson Legacy M229 x Ellingson Hummer T713	PB SM	18.1	0.5	63.9	95.7	0.20	14.8	14.8	46.7	138.6	70.9
CDI AUTHORITY 77X	2595674	NF Trump S582 x CDI Ms Crocket 88T	PB SM	12.2	3.0	70.0	107.6	0.23	2.1	24.0	59.0	117.3	69.1
W/C WIDE TRACK 694Y	2588250	3C W/C Right Track W9462 x Miss Werning 6945	PB SM	4.9	4.9	72.1	116.0	0.27	-6.6	17.6	53.6	115.4	69.1
SVF ALLEGIANCE Y802	2638036	MR NLC Upgrade U8676 x Double R Miss 29G T18	PB SM	9.3	1.6	84.8	129.6	0.28	4.9	13.7	56.1	122.4	82.3
CCR COWBOY CUT 5048Z	2703910	Triple C Singletary S3H x CCR Ms 4045 Time 7322T	PB SM	17.5	1.8	85.9	117.2	0.20	13.5	36.9	79.9	163.0	97.3
WS ZENITH Z55	2675747	GW Red Coat 099TS x HSF Miss Sky 87U	PB SM	12.8	2.5	80.1	120.2	0.25	11.7	8.8	48.8	142.8	78.4
ELLINGSON COMPLETE A358	2791433	R Plus Hard Rock 145X x Ellingson Ms Amigo X5	PB SM	9.3	3.2	83.5	116.1	0.20	17.4	7.3	49.1	114.3	74.9
ELLINGSON LOAD UP B4022	2915402	Remington Lock N Load 54U x Brant R17K Ms Top Shelf	PB SM	12.7	0.2	61.7	106.3	0.28	4.7	19.6	50.4	116.5	65.0
BBS TRUE JUSTICE B10	2878160	BDV True Grit 11X x BBS Miss Justice Z7	PB SM	18.8	-0.5	71.1	113.1	0.26	10.8	26.3	61.9	158.0	80.6
HOOK'S BROADWAY 11B	2854437	MCM Top Grade 018X x Hook's Water Lily 89W	PB SM	-4.1	3.4	71.1	112.5	0.26	7.4	26.1	61.7	118.5	74.8
RFS BULLETPROOF B42	2930104	GW Redestined 642X x RFS Miss Z119	PB SM	10.3	1.7	80.6	127.4	0.29	9.2	23.2	63.5	159.7	87.9

PUREBRED ANGUS REFERENCE SIRES (ASA EPDS)

Name	ASA #	Sire x Dam	Breeds	CE	BW	WW	YW	ADG	MCE	Milk	MW	API	TI
CONNEALY IN SURE 8524	2627830	Mytty In Focus x Entreena of Conanga 657	PB AN	27.9	-6.2	53.5	98.9	0.28	11.8	36.0	62.7	199.4	90.0
HART CHECKMARK 4117	3025534	Connealy Checkmark x Hart Misti 7017	PB AN	16.3	-2.0	72.9	124.4	0.32	8.8	29.6	66.1	138.0	82.9
CONNEALY BALANCE	2954054	Connealy Confidence x Elfeena of Conanga 0938	PB AN	19.0	-3.7	56.1	89.4	0.21	8.3	16.6	44.6	126.0	66.8
HART PAYWEIGHT 5015	3152189	Basin Payweight 1682 x Hart Blackcap Maid 3044	PB AN	19.7	-3.9	71.5	137.4	0.41	9.4	27.8	63.5	146.9	86.1

SIMANGUS REFERENCE SIRES

Name	ASA #	Sire x Dam	Breeds	CE	BW	WW	YW	ADG	MCE	Milk	MW	API	TI
GW ROBUST 605Z	2694778	GW Premium Beef 021TS x GW Miss GPRD 123X	5/8 SM 3/8 AN	12.9	1.5	86.6	132.3	0.29	2.1	25.3	68.6	152.9	90.7
J BAR J NIGHTRIDE 225Z	2628568	GW Premium Beef 021TS x J Bar J Miss ND 793X	5/8 SM 3/8 AN	22.8	-4.8	56.5	91.8	0.22	11.4	12.7	41.0	179.6	88.3
CLRS CONSTITUTION 311 C	2984470	J Bar J Nightride 225Z x CLRS Aid Xcellence 311A	5/8 SM 3/8 AN	10.5	-0.4	74.6	127.2	0.33	8.7	15.9	53.2	162.2	93.9
HOOK'S XPECTATION 36X	2559346	GW Predestined 701T x Hooks Mika 141M	3/4 SM 1/4 AN	16.0	-3.4	59.5	82.9	0.15	9.3	29.8	59.6	159.1	79.9
MCM TOP GRADE 018X	2540315	MR NLC Upgrade U8676 x MCM 513R	3/4 SM 1/4 AN	9.9	-0.6	59.0	98.0	0.24	7.5	31.1	60.6	138.2	78.5
HOOK'S BLACK HAWK 50B	2854467	Hook's Xavier 14X x Hook's Yvette 100Y	3/4 SM 1/4 AN	20.9	-4.0	67.9	101.0	0.21	8.4	21.9	55.9	183.7	84.2
KBHR COMPASS C324	3047675	CCR Gravity 9064A x KBHR Y142	3/4 SM 1/4 AN	8.5	4.0	96.2	151.0	0.34	13.1	22.0	70.1	145.8	89.7



Ellingson Load Up B4022

Homozygous Black and Homozygous Polled, Red Charlie Free

We sold our first Load Up progeny in our 2017 sale. They were well accepted due to his outstanding muscle definition and phenotype. He moves like a cat and has great feet. We appreciate his moderate frame and have found that mating him with red cows or black cows; his progeny stand out.

1

RFS DESIGN D269

RYDEEN FARMS

Homo Black | Homo Polled | PB SM | Bull
BD: 10/15/16 | Tattoo: D269 | ASA#: 3250837

REMINGTON LOCK N LOADS4U

ACT BW 85

SIRE ELLINGSON LOAD UP B4022

ADJ WW 749



BRANT R17K MS TOP SHELF

ACT WT 1410

KBHR Y068 HARLEY

FRAME SC 5.5

DAM RFS MISS A202

ACT SC 41.0

RF MISS RAM P281

CE	BW	WW	YW	ADG	MCE	MILK	MHW	STAY	DOC	CW	YG	MARB	BF	REA	API	TI
10.6	1.4	64.1	99.7	0.22	5.8	20.4	52.5	11.6	11.6	31.4	-0.39	-0.17	-0.057	1.04	110.1	63.4

- Low birth wt. and explosive performance
- Dam is a solid black Harley, long, deep, 6 frame cow



LOT 1

2

RFS DEACON D267

RYDEEN FARMS

Homo Black | Homo Polled | PB SM | Bull
BD: 10/10/16 | Tattoo: D267 | ASA#: 3250835

REMINGTON LOCK N LOADS4U

ACT BW 90

SIRE ELLINGSON LOAD UP B4022

ADJ WW 816



BRANT R17K MS TOP SHELF

ACT WT 1450

DIKEMANS SURE BET

FRAME SC 6.0

DAM RFS MISS A221

ACT SC 44.0

HSF/RF DIVA S618

CE	BW	WW	YW	ADG	MCE	MILK	MHW	STAY	DOC	CW	YG	MARB	BF	REA	API	TI
8.4	3.2	82.1	124.7	0.27	6.1	20.7	61.8	13.9	12.1	48.4	-0.34	0.05	-0.055	1.09	127.0	76.8

- Powerful herd sire, ranked top 2% of breed both weaning and yearling wts.
- Great cow family with solid black dam and grand dam
- Grand dam is ranked top 1% of breed for weaning wt., milk & maternal weaning wt.



LOT 2

3

RFS DISCO D254

RYDEEN FARMS

Hetero Black | Homo Polled | PB SM | Bull
BD: 9/17/16 | Tattoo: D254 | ASA#: 3250822

REMINGTON LOCK N LOADS4U

ACT BW 88

SIRE ELLINGSON LOAD UP B4022

ADJ WW 751



BRANT R17K MS TOP SHELF

ACT WT 1480

CDI AUTHORITY 77X

FRAME SC 5.0

DAM B62

ACT SC 43.5

U14

CE	BW	WW	YW	ADG	MCE	MILK	MHW	STAY	DOC	CW	YG	MARB	BF	REA	API	TI
11.2	0.8	65.9	104.8	0.24	7.3	20.4	53.4	11.5	12.1	33.7	-0.40	-0.06	-0.055	1.11	118.7	68.2

- Moderate framed, deep bodied tank
- Dam is easy keeping with a super udder



LOT 3



LOT 4



LOT 5



LOT 6



LOT 7

4

RFS DEUCE D265

RYDEEN FARMS

Hetero Black | Homo Polled | PB SM | Bull
BD: 10/9/16 | Tattoo: D265 | ASA#: 3250833

REMINGTON LOCK N LOADS4U
SIRE ELLINGSON LOAD UP B4022
 GGPLD BRANT R17K MS TOP SHELF
 35R
DAM W136
 RF RUDI

ACT BW	88
ADJ MW	739
ACT WT 1/5/18	1395
FRAME SC	5.5
ACT SC	41.0

CE	BW	MW	YW	ADG	MCE	MILK	MMW	STAY	DOC	CW	YG	MARB	BF	REA	API	TI
12.5	0.2	63.9	99.3	0.22	7.9	22.8	54.7	15.7	11.9	29.4	-0.38	-0.05	-0.055	0.99	129.3	68.3

- Great phenotype, moderate package, top 20% CE & BW
- Dam is solid black, ranked top 1% of breed for stay, top 10% API

5

RFS DUNDEE D260

RYDEEN FARMS

Hetero Black | Homo Polled | 1/2 SM 1/4 CS 1/4 MX | Bull
BD: 9/25/16 | Tattoo: D260 | ASA#: 3250828

REMINGTON LOCK N LOADS4U
SIRE ELLINGSON LOAD UP B4022
 GGPLD BRANT R17K MS TOP SHELF
DAM P80

ACT BW	90
ADJ MW	747
ACT WT 1/5/18	1455
FRAME SC	6.0
ACT SC	42.0

CE	BW	MW	YW	ADG	MCE	MILK	MMW	STAY	DOC	CW	YG	MARB	BF	REA	API	TI
11.6	0.2	58.8	96.5	0.24	3.0	23.4	52.8	5.6		28.1	-0.45	-0.08	-0.097	0.86	95.4	59.9

- Super, baldy, Load Up son
- Little more frame than his half brothers
- Dam is all black and ratios 106/6 birth wt.

6

RFS DELIVER D261

RYDEEN FARMS

Hetero Black | Homo Polled | PB SM | Bull
BD: 9/27/16 | Tattoo: D261 | ASA#: 3250829

REMINGTON LOCK N LOADS4U
SIRE ELLINGSON LOAD UP B4022
 GGPLD BRANT R17K MS TOP SHELF
 TRAXS RUSHMORE X103
DAM RFS MISS AFFECTION A104
 U8

ACT BW	70
ADJ MW	751
ACT WT 1/5/18	1445
FRAME SC	5.0
ACT SC	43.0

CE	BW	MW	YW	ADG	MCE	MILK	MMW	STAY	DOC	CW	YG	MARB	BF	REA	API	TI
12.8	0.0	64.9	108.3	0.27	8.6	19.2	51.6	12.0	13.0	34.8	-0.37	-0.08	-0.060	0.99	122.7	68.4

- Solid black, low birth wt. bull, ratio 120 birth wt.
- Dam is a moderate framed, cherry red, cow

7

RFS DEFENDER D262

RYDEEN FARMS

Hetero Black | Homo Polled | PB SM | Bull
BD: 9/28/16 | Tattoo: D262 | ASA#: 3250830

REMINGTON LOCK N LOADS4U
SIRE ELLINGSON LOAD UP B4022
 GGPLD BRANT R17K MS TOP SHELF
 RF DEWPOINT W78
DAM RFS MISS A222
 X146

ACT BW	80
ADJ MW	752
ACT WT 1/5/18	1380
FRAME SC	5.0
ACT SC	40.0

CE	BW	MW	YW	ADG	MCE	MILK	MMW	STAY	DOC	CW	YG	MARB	BF	REA	API	TI
11.5	1.0	69.3	103.8	0.22	9.3	19.2	53.9	15.8	12.3	33.0	-0.40	-0.04	-0.064	1.02	128.2	69.9

- Solid black, Load Up son
- Super birth wt. to weaning numbers
- Dam is solid black 6 frame cow with a perfect udder

8**RFS DASHING D263**

RYDEEN FARMS

Homo Black | Homo Polled | PB SM | Bull
BD: 10/3/16 | Tattoo: D263 | ASA#: 3250831

SIRE

ELLINGSON LOAD UP B4022

ACT BW 94

ADJ WM 893

GGPLD

BRANT R17K MS TOP SHELF

ACT WT 1500

TNT TANKER U263

FRAME SC 6.5

DAM

RFS MISS Z94

ACT SC 42.0

RF SEQUEL S159

CE	BW	WW	YW	ADD	MCE	MILK	MHW	STAY	DOC	CW	YG	MARB	BF	REA	API	TI
7.7	2.4	85.6	133.9	0.30	9.1	20.0	62.8	12.1	11.6	52.9	-0.40	-0.11	-0.058	1.31	117.7	76.3

- Highest performance Load Up son
- Ranked top 1% for weaning, yearling, ADG
- Dam is a beautiful, solid black Tanker daughter



LOT 8

18 MONTH OLD BULLS

**Hook's Black Hawk 50B**

Homozygous Polled and Black

We chose Black Hawk with excellent calving ease and birth weight EPD's to use as a new pedigree on our heifers in our fall program. We were so impressed with them that we decided to use him in our spring program as well.

9**RFS DEVELOPER D246**

RYDEEN FARMS

Homo Black | Homo Polled | 3/4 SM 1/4 AN | Bull
BD: 9/9/16 | Tattoo: D246 | ASA#: 3250814

SIRE

HOOK'S BLACK HAWK 50B

ACT BW 87

ADJ WM 777

GGPLD

HOOK'S YVETTE 100Y

ACT WT 1495

TNT DUAL FOCUS T249

FRAME SC 6.5

DAM

RFS MISS Z36

ACT SC 39.0

W53

CE	BW	WW	YW	ADD	MCE	MILK	MHW	STAY	DOC	CW	YG	MARB	BF	REA	API	TI
16.3	-1.2	65.8	93.6	0.17	8.5	22.4	55.3	19.7	11.6	23.5	-0.24	0.38	-0.004	0.87	156.1	75.7

- Low birth wt., solid black $\frac{3}{4}$ blood
- Dam is all black Dual Focus
- Ranked top 20% weaning wt.



LOT 9

10**RFS DISCOVER D227**

RYDEEN FARMS

Black | Homo Polled | PB SM | Bull
BD: 9/2/16 | Tattoo: D227 | ASA#: 3250795

SIRE

HOOK'S BLACK HAWK 50B

ACT BW 80

ADJ WM 644

GGPLD

HOOK'S YVETTE 100Y

ACT WT 1405

KBHR Y068 HARLEY

FRAME SC 6.0

DAM

RFS MISS A217

ACT SC 38.5

W35

CE	BW	WW	YW	ADD	MCE	MILK	MHW	STAY	DOC	CW	YG	MARB	BF	REA	API	TI
15.6	-0.6	74.5	113.1	0.24	7.9	18.0	55.2	21.3	12.6	36.1	-0.34	0.16	-0.034	1.10	161.2	80.4

- Low birth wt. twin, solid black purebred
- Solid black dam
- Ranked top 10% of breed for weaning wt., yearling wt., ADG



LOT 10



LOT 11



LOT 12



LOT 13



LOT 14

11

RFS DIRK D251

RYDEEN FARMS

Homo Black | Homo Polled | PB SM | Bull
BD: 9/10/16 | Tattoo: D251 | ASA#: 3250819

SIRE HOOK'S XAVIER 14X
GGPLD HOOK'S BLACK HAWK 50B
HOOK'S YVETTE 100Y
GFI RAMBLER J114
DAM W86
RFS CASS H28

ACT BW 91
ADJ WW 800
ACT WT 1465
1/5/18
FRAME SC 6.0
ACT SC 38.5

CE	BW	WW	YW	ADD	MCE	MILK	MHW	STAY	DDC	CW	YG	MARB	BF	REA	API	TI
14.1	-0.5	69.4	99.0	0.19	11.9	19.9	54.6	20.5	10.9	27.7	-0.32	0.32	-0.030	0.98	162.9	80.7

- All black, deep bodied fellow that ratios 106 weaning wt.
- Dam ratios 102/6 birth wt., 103/6 weaning wt.
- Grand dam has many daughters in herd

12

RFS DUSTY D248

RYDEEN FARMS

Homo Black | Homo Polled | PB SM | Bull
BD: 9/9/16 | Tattoo: D248 | ASA#: 3250816

SIRE HOOK'S XAVIER 14X
GGPLD HOOK'S BLACK HAWK 50B
HOOK'S YVETTE 100Y
MR NLC UPGRADE U8676
DAM RFS MISS BERNICE B235
RF RABBIT

ACT BW 90
ADJ WW 860
ACT WT 1560
1/5/18
FRAME SC 6.0
ACT SC 40.0

CE	BW	WW	YW	ADD	MCE	MILK	MHW	STAY	DDC	CW	YG	MARB	BF	REA	API	TI
15.0	-0.2	81.5	124.4	0.27	6.5	23.9	64.6	17.4	11.6	43.3	-0.35	0.33	-0.050	1.10	163.9	89.0

- Second in his class for weaning wt., first in class at yearling
- Dam's a young, solid black Upgrade daughter
- Grand dam is an "R" model that has weaned 11 calves and still in the herd

13

RFS DARSHAN D240

RYDEEN FARMS

Homo Black | Homo Polled | PB SM | Bull
BD: 9/7/16 | Tattoo: D240 | ASA#: 3250808

SIRE HOOK'S XAVIER 14X
GGPLD HOOK'S BLACK HAWK 50B
HOOK'S YVETTE 100Y
ELLINGSON LEGACY M229
DAM Y112
RF SILVIA S27

ACT BW 89
ADJ WW 730
ACT WT 1450
1/5/18
FRAME SC 5.5
ACT SC 38.0

CE	BW	WW	YW	ADD	MCE	MILK	MHW	STAY	DDC	CW	YG	MARB	BF	REA	API	TI
15.6	-0.5	67.3	103.5	0.23	9.2	21.2	54.8	19.9	11.4	30.7	-0.35	0.31	-0.054	0.92	163.5	80.0

- Calving ease Blackhawk son, top 1% of breed for API
- Dam's a super Olie cow who sent a Security son to Stan Eckhoff last year

14

RFS DENNIS D224

RYDEEN FARMS

Red Non-Diluter | Hetero Polled | PB SM | Bull
BD: 8/28/16 | Tattoo: D224 | ASA#: 3250792

SIRE GW RED COAT 099TS
GGPLD WS ZENITH Z55
HSF MISS SKY 87U
THSF FREEDOM 300N
DAM RF SIRENA S1
RF MISS L41

ACT BW 85
ADJ WW 800
ACT WT 1565
1/5/18
FRAME SC 6.5
ACT SC 41.0

CE	BW	WW	YW	ADD	MCE	MILK	MHW	STAY	DDC	CW	YG	MARB	BF	REA	API	TI
11.3	0.7	73.7	113.4	0.25	13.3	14.5	51.4	14.6	12.3	38.2	-0.36	0.01	-0.067	0.96	131.7	74.0

- Dark red and blazed, this guy will add a bit more frame to his calves
- Dam is a lovely red that ranks in top 4% of breed in maternal calving ease
- Great cow family

15

RFS DOUGLAS D234

RYDEEN FARMS

Red Non-Diluter | Homo Polled | 1/2 SM 1/2 CS | Bull
BD: 9/5/16 | Tattoo: D234 | ASA#: 3250802

NF TRUMP 5582

SIRE **GGPLD** CDI AUTHORITY 77X

CDI MS CROCKET 88T

DAM P50

ACT BW	85
Twin	
ADJ WW	692
ACT WT	1445
1/5/18	
FRAME SC	5.5
ACT SC	40.0

CE	BW	WW	YW	ADD	MCE	MILK	MMW	STAY	DOC	CW	YG	MARB	BF	REA	API	TI
11.2	2.3	63.3	94.2	0.19	1.4	27.0	58.7	5.3		29.3	-0.58	-0.09	-0.121	1.09	100.5	65.1

- These twin brothers are as thick and deep as anything we can offer
- Dam raised Authority sons, weaned them without creep feed right alongside their single birth buddies.
- Dam bred back and calved to her AI date in September 2017



LOT 15

18 MONTH OLD BULLS

16

RFS DERBY D235

RYDEEN FARMS

Red Non-Diluter | Homo Polled | 1/2 SM 1/2 CS | Bull
BD: 9/5/16 | Tattoo: D235 | ASA#: 3250803

NF TRUMP 5582

SIRE **GGPLD** CDI AUTHORITY 77X

CDI MS CROCKET 88T

DAM P50

ACT BW	92
Twin	
ADJ WW	677
ACT WT	1350
1/5/18	
FRAME SC	6.0
ACT SC	41.0

CE	BW	WW	YW	ADD	MCE	MILK	MMW	STAY	DOC	CW	YG	MARB	BF	REA	API	TI
10.2	3.3	68.3	102.5	0.21	1.2	26.4	60.6	5.3		35.6	-0.55	-0.09	-0.121	1.08	99.7	66.7

- Twin to D234



LOT 16

17

RFS DOWNTOWN D219

RYDEEN FARMS

Homo Black | Homo Polled | 3/8 SM 5/8 AN | Bull
BD: 8/28/16 | Tattoo: D219 | ASA#: 3250786

CONNELLY CONFIDENCE 0100

SIRE **GGPLD** CONNEALY BALANCE

ELFEENA OF CONANGA 0938

KBHR Y068 HARLEY

DAM RFS MISS BEA B243

W135

ACT BW	82
ADJ WW	738
ACT WT	1505
1/5/18	
FRAME SC	6.0
ACT SC	39.0

CE	BW	WW	YW	ADD	MCE	MILK	MMW	STAY	DOC	CW	YG	MARB	BF	REA	API	TI
14.1	-1.2	54.0	82.7	0.18	6.9	19.4	46.4	8.6	12.4	17.6	-0.14	0.35	-0.005	0.49	119.0	64.5

- Big time performance SimAngus in a 6 frame package
- Dam's a 2nd calf, solid black Harley female



LOT 17

18

RFS DURHAM D217

RYDEEN FARMS

Homo Black | Homo Polled | 3/8 SM 5/8 AN | Bull
BD: 8/28/16 | Tattoo: D217 | ASA#: 3250784

CONNELLY CONFIDENCE 0100

SIRE **GGPLD** CONNEALY BALANCE

ELFEENA OF CONANGA 0938

W/C UNITED 956Y

DAM RFS MISS BETH B221

RF SCRUPLE S123

ACT BW	80
ADJ WW	682
ACT WT	1295
1/5/18	
FRAME SC	5.5
ACT SC	36.0

CE	BW	WW	YW	ADD	MCE	MILK	MMW	STAY	DOC	CW	YG	MARB	BF	REA	API	TI
13.4	-0.5	63.1	105.1	0.26	8.2	18.9	50.5	8.4	11.4	32.2	-0.06	0.54	-0.001	0.47	131.2	73.8

- Low birth wt. Balance son that's one of the heavyweights today
- Dam was a first calf heifer



LOT 18



LOT 19



LOT 20



LOT 21



LOT 22

19

RFS DEALER D220

RYDEEN FARMS

Homo Black | Homo Polled | PB SM | Bull
BD: 8/28/16 | Tattoo: D220 | ASA#: 3250787SIRE
GGPLDSVF ALLEGIANCE Y802
DOUBLE R MISS 29G T18DAM
RFS MISS AGATE A50
RF SEASON S141

ACT BW	86
ADJ WW	733
ACT WT 1/5/18	1480
FRAME SC	5.5
ACT SC	41.5

CE	BW	WW	YW	ADD	MCE	MILK	MHW	STAY	DOC	CW	YG	MARB	BF	REA	API	TI
8.3	1.5	80.1	119.9	0.25	9.6	15.8	55.9	10.5	12.4	43.0	-0.49	-0.03	-0.071	1.37	118.6	75.9

- Fantastic baldy, homo black & homo polled, PB
- Top 3% weaning wt. & yearling wt.
- Dam is a young, typical Tanker with lots of guts and can gain weight on a straw bale

20

RFS DIAMOND D216

RYDEEN FARMS

Black | Polled | PB SM | Bull
BD: 8/28/16 | Tattoo: D216 | ASA#: 3250783SIRE
GGPLDSVF ALLEGIANCE Y802
DOUBLE R MISS 29G T18DAM
RFS MISS AMBROSIA A41
U184

ACT BW	76
ADJ WW	642
ACT WT 1/5/18	1365
FRAME SC	5.5
ACT SC	42.0

CE	BW	WW	YW	ADD	MCE	MILK	MHW	STAY	DOC	CW	YG	MARB	BF	REA	API	TI
8.4	2.3	77.4	118.0	0.25	9.6	19.3	58.0	9.9	12.6	43.2	-0.40	0.08	-0.066	1.15	120.8	76.1

- Low birth wt. twin
- Solid black Allegiance son
- Dam's a moderate framed Tanker cow

21

RFS DUPLEX D229

RYDEEN FARMS

Homo Black | Homo Polled | PB SM | Bull
BD: 9/2/16 | Tattoo: D229 | ASA#: 3250797SIRE
GGPLDELLINGSON LEGACY M229
ELLINGSON DOMINATOR W905
ELLINGSON HUMMER T713DAM
RFS MISS APPROACH A178
KBHR Y068 HARLEY
RF SAPPHIRE S96

ACT BW	88
ADJ WW	668
ACT WT 1/5/18	1300
FRAME SC	5.5
ACT SC	38.0

CE	BW	WW	YW	ADD	MCE	MILK	MHW	STAY	DOC	CW	YG	MARB	BF	REA	API	TI
16.0	-0.5	50.2	69.4	0.12	12.8	17.6	42.7	12.5	10.4	10.5	-0.44	-0.15	-0.072	0.82	116.3	57.8

- Outcross, blazed face that's homo black & homo polled
- Top 3% of breed for calving ease, top 10% birth wt.
- Dam is a beautiful, young, blazed face Harley with great legs, feet and udder

22

RFS DEBUT D245

RYDEEN FARMS

Homo Black | Homo Polled | 3/4 SM 1/4 AN | Bull
BD: 9/8/16 | Tattoo: D245 | ASA#: 3250813SIRE
GGPLDMR NLC UPGRADE U8676
MCM TOP GRADE O18X
MCM S13RDAM
RFS MISS A203
TNT DUAL FOCUS T249
RF MISS RAM P278

ACT BW	90
ADJ WW	750
ACT WT 1/5/18	1485
FRAME SC	6.5
ACT SC	41.0

CE	BW	WW	YW	ADD	MCE	MILK	MHW	STAY	DOC	CW	YG	MARB	BF	REA	API	TI
10.9	0.8	60.6	96.0	0.22	8.8	25.5	55.8	11.1	10.8	28.6	-0.27	0.46	-0.040	0.74	132.9	72.7

- Homo black & homo polled, smooth sided, long, herd sire prospect
- Dam's a young, solid black, long, Dual Focus ¼ blood

23

RFS DEVON D231

RYDEEN FARMS

Homo Black | Homo Polled | 3/4 SM 1/4 AN | Bull
BD: 9/3/16 | Tattoo: D231 | ASA#: 3250799

GW PREMIUM BEEF 021TS

SIRE **J BAR J NIGHTRIDE 225Z**

J BAR J MISS ND 793X

DIKEMANS SURE BET

DAM **RFS MISS A211**

RF ROSA

ACT BW 86

ADJ WW 669

ACT WT 1325

1/5/IB 5.0

FRAME SC 37.5

CE	BW	WW	YW	ADD	MCE	MILK	MHW	STAY	DOC	CW	YG	MARB	BF	REA	API	TI
17.0	-1.6	53.7	83.3	0.18	9.7	14.7	41.5	14.7	12.8	17.4	-0.30	0.65	-0.031	0.77	170.0	80.9

- Low birth wt., homo black & homo polled, heifer type bull
- Top 3% of breed for API
- Dam is a moderate framed cow



LOT 23

18 MONTH OLD BULLS

24

RFS DAZZLER D243

RYDEEN FARMS

Homo Black | Homo Polled | 3/4 SM 1/4 AN | Bull
BD: 9/8/16 | Tattoo: D243 | ASA#: 3250811

CNS DREAM ON L186

SIRE **HTP SVF IN DEW TIME**

HTP SVF HONEYDEW

HALE BLACK DIAMOND P192

DAM **W135**

PAR JUDGES HEROINE

ACT BW 91

ADJ WW 770

ACT WT 1435

1/5/IB 6.0

FRAME SC 40.0

CE	BW	WW	YW	ADD	MCE	MILK	MHW	STAY	DOC	CW	YG	MARB	BF	REA	API	TI
12.8	1.0	60.0	78.3	0.11	9.2	15.8	45.8	9.8	10.8	17.4	-0.19	0.34	-0.014	0.58	121.8	66.8

- Really good bull, homo black & homo polled
- Dam is a great Hale Black Diamond cow
- Dazzler's half sister is working in the herd



LOT 24

25

RFS DESMOND D215

RYDEEN FARMS

Homo Black | Homo Polled | 1/2 SM 1/2 AN | Bull
BD: 8/28/16 | Tattoo: D215 | ASA#: 3250781

MYTTY IN FOCUS

SIRE **CONNELLY IN SURE 8524**

ENTRENA OF CONANGA 657

KBHR Y068 HARLEY

DAM **RFS MISS BERIT B246**

RF PANDORA

ACT BW 78

ADJ WW 723

ACT WT 1300

1/5/IB 6.0

FRAME SC 39.0

CE	BW	WW	YW	ADD	MCE	MILK	MHW	STAY	DOC	CW	YG	MARB	BF	REA	API	TI
17.5	-1.5	59.3	97.4	0.24	9.3	27.3	57.0	13.4	12.3	26.1	-0.16	0.61	-0.023	0.53	158.3	79.3

- Low birth wt top 10% of breed calving ease heifer bull
- Dam's a first calf heifer
- Great cow family



LOT 25



What does this mean?
 These bulls have been parent verified and their
 EPD's genomically enhanced for accuracy.

Using genomic-enhanced EPDs for selection of young breeding stock provides a level of precision and reliability that's never been available to producers before.



Bob Weaber
 Kansas State University



CLRS Constitution 311 C

Homozygous Black and Homozygous Polled

Constitution was our pick at the 2016 Bred for Balance sale as a yearling. We wanted an out cross heifer bull to inject carcass quality into our program. He ranks in the top 1% of the breed for marbling and has outstanding weaning and yearling performance. His first crop of bulls and females have exceeded our expectations. Take a look at his females in the open heifer section of the catalog. They are nice.



LOT 26



LOT 27



LOT 28

26

RFS ELI E13

RYDEEN FARMS

Homo Black | Homo Polled | 5/8 SM 3/8 AN | Bull
BD: 3/3/17 | Tattoo: E13 | ASA#: 3309823

J BAR J NIGHTRIDE 225Z

SIRE CLRS CONSTITUTION 311 C

CLRS AID XCELLENCE 311 A

HART FINAL ANSWER 0048

DAM C70

RFS MISS ASTRID A112

ACT BW	80
ADJ WM	819
ADJ YM	1324
FRAME SC	6.0
ADG	3.2
WDA	3.6
ADJ SC	36.1

CE	BW	WW	YW	ADD	MCE	MILK	MHW	STAY	DDC	CW	YG	MARB	BF	REA	API	TI
11.4	0.3	83.3	136.3	0.33	9.6	17.6	59.2	10.2	12.7	51.5	0.02	0.62	-0.009	0.40	150.3	89.4

- Homo both ways, long as a church pew and deep sided
- Dam's a first calf, Final Answer granddaughter
- Top 2% in breed for weaning and top 3% for yearling

27

RFS ELVIS E118

RYDEEN FARMS

Homo Black | Hetero Polled | 3/4 SM 1/4 AN | Bull
BD: 3/17/17 | Tattoo: E118 | ASA#: 3309930

J BAR J NIGHTRIDE 225Z

SIRE CLRS CONSTITUTION 311 C

CLRS AID XCELLENCE 311 A

MR NLC UPGRADE U8676

DAM RFS MISS AGILE A37

RF SKYE S15

ACT BW	82
ADJ WM	823
ADJ YM	1414
FRAME SC	6.0
ADG	3.7
WDA	3.9
ADJ SC	41.9

CE	BW	WW	YW	ADD	MCE	MILK	MHW	STAY	DDC	CW	YG	MARB	BF	REA	API	TI
10.2	0.5	85.8	145.1	0.37	9.8	18.9	61.8	8.7	11.7	57.2	-0.10	0.67	-0.022	0.72	160.6	97.7

- This guy's a 3/4 blood truck
- Performance and carcass package
- Dam's ratio 101/3 birth wt., 104/3 weaning wt., 106/3 yearling wt.

28

RFS EXPANSE E26

RYDEEN FARMS

Homo Black | Homo Polled | 3/4 SM 1/4 AN | Bull
BD: 3/6/17 | Tattoo: E26 | ASA#: 3309837

J BAR J NIGHTRIDE 225Z

SIRE CLRS CONSTITUTION 311 C

CLRS AID XCELLENCE 311 A

PPSR NOPHALT 20H

DAM RF SKYE S15

COTT-GFI KELSIE 373N

ACT BW	88
ADJ WM	796
ADJ YM	1374
FRAME SC	6.5
ADG	3.6
WDA	3.8
ADJ SC	39.3

CE	BW	WW	YW	ADD	MCE	MILK	MHW	STAY	DDC	CW	YG	MARB	BF	REA	API	TI
10.3	1.2	75.6	131.2	0.35	11.1	22.7	60.5	11.2	10.2	50.4	-0.05	0.55	-0.013	0.55	154.2	88.1

- Homo black & homo polled, top 3% yearling, top 1% ADG
- Exceptional performance
- Dam's a favorite, 12 year old NoPhalt with 10 natural calves, 2 daughters working in the herd

29**RFS EBONY E35**

RYDEEN FARMS Hetero Black | Homo Polled | 5/8 SM 1/4 AN 1/8 CS | Bull
 BD: 3/7/17 | Tattoo: E35 | ASA#: 3309846

SIRE J BAR J NIGHTRIDE 225Z
CLRS CONSTITUTION 311 C
 CLRS AID XCELLENCE 311 A

DAM TNT TANKER U263
RFS MISS Z25
 W10

ACT BW 96
ADJ WW 810
ADJ YM 1175
FRAME SC 6.0
ADG 2.3
WDA 3.4
ADJ SC 38.3

CE	BW	WW	YW	ADD	MCE	MILK	MHW	STAY	DOC	CW	YG	MARB	BF	REA	API	TI
8.0	2.0	76.5	120.9	0.28	8.8	18.4	56.6	10.1	13.2	44.8	-0.08	0.56	-0.010	0.59	135.9	81.3

- Long as a train
- Top 10% of breed weaning wt., and yearling wt.
- Dam is ranked in the top 1% of the breed for weaning and yearling wts.

**LOT 29****30****RFS ECHO E47**

RYDEEN FARMS Homo Black | Homo Polled | 3/4 SM 1/4 AN | Bull
 BD: 3/9/17 | Tattoo: E47 | ASA#: 3309858

SIRE J BAR J NIGHTRIDE 225Z
CLRS CONSTITUTION 311 C
 CLRS AID XCELLENCE 311 A

DAM ELLINGSON RIGHT ON W944
Y2
 RFS MISS T22

ACT BW 93
ADJ WW 779
ADJ YM 1266
FRAME SC 6.0
ADG 3.1
WDA 3.6
ADJ SC 40.4

CE	BW	WW	YW	ADD	MCE	MILK	MHW	STAY	DOC	CW	YG	MARB	BF	REA	API	TI
9.6	1.0	71.1	115.3	0.28	12.0	17.5	53.0	13.8	11.7	40.2	-0.14	0.54	-0.037	0.52	154.8	84.4

- Homo black & homo polled, top 10% for API and TI
- Dam is a solid black, Right On cow
- Last year her Top Grade son sold to Greg Johnson, SD

**LOT 30**

YEARLING BULLS

31**RFS EXPERT E68**

RYDEEN FARMS Hetero Black | Homo Polled | 3/4 SM 1/4 AN | Bull
 BD: 3/12/17 | Tattoo: E68 | ASA#: 3309880

SIRE J BAR J NIGHTRIDE 225Z
CLRS CONSTITUTION 311 C
 CLRS AID XCELLENCE 311 A

DAM MR NLC SUPERIOR 56018
X81
 RF MISS J82

ACT BW 95
ADJ WW 851
ADJ YM 1240
FRAME SC 6.5
ADG 2.5
WDA 3.6
ADJ SC 42.6

CE	BW	WW	YW	ADD	MCE	MILK	MHW	STAY	DOC	CW	YG	MARB	BF	REA	API	TI
8.4	1.8	72.4	112.7	0.25	10.6	21.2	57.4	12.8	11.6	39.6	-0.26	0.38	-0.039	0.89	141.6	80.7

- Big, stout chap guaranteed to add pounds to your next calf crop
- Dam ratio's 105/6 weaning wt., grand dam ratio's 110/12 weaning wt.
- Lots of power in this cow family that is hard to find.

**LOT 31****32****RFS EXCLAIM E72**

RYDEEN FARMS Homo Black | Homo Polled | 3/4 SM 1/4 AN | Bull
 BD: 3/12/17 | Tattoo: E72 | ASA#: 3309884

SIRE J BAR J NIGHTRIDE 225Z
CLRS CONSTITUTION 311 C
 CLRS AID XCELLENCE 311 A

DAM KBHR Y068 HARLEY
RFS MISS ACCORD A16
 RF SOFIA S13

ACT BW 84
ADJ WW 831
ADJ YM 1354
FRAME SC 6.0
ADG 3.3
WDA 3.8
ADJ SC 37.6

CE	BW	WW	YW	ADD	MCE	MILK	MHW	STAY	DOC	CW	YG	MARB	BF	REA	API	TI
10.7	0.5	76.6	127.6	0.32	8.1	18.6	56.9	12.8	12.3	46.8	-0.10	0.39	-0.019	0.60	149.5	84.9

- Homo black & homo polled
- Remarkable ratios 105 birth wt., 106 weaning wt., 110 yearling wt.
- Dam's a 3rd calf Harley female, that ratio's 104/3, weaning wt., 103/3 yearling wt.

**LOT 32**



LOT 33



LOT 34



LOT 35



LOT 36

33 | RFS ELEGANCE E103

RYDEEN FARMS | Homo Black | Homo Polled | 3/4 SM 1/4 AN | Bull
BD: 3/15/17 | Tattoo: E103 | ASA#: 3309915

SIRE CLRS CONSTITUTION 311 C
CLRS AID XCELLENCE 311 A
ELLINGSON RIGHT ON W944

DAM RFS MISS Z143
RF SAVANNA S113

ACT BW	85
ADJ HW	857
ADJ YM	1441
FRAME SC	6.5
ADG	3.7
WDA	4.0
ADJ SC	40.7

CE	BM	WW	YW	ADD	MCE	MILK	MMW	STAY	DOC	CW	YG	MARB	BF	REA	API	TI
9.4	1.0	83.9	145.0	0.38	9.6	21.8	63.8	12.4	11.8	58.1	-0.04	0.58	-0.038	0.42	161.2	94.0

- Homo black & homo polled boxcar
- Ratio's 105 birth, 109 weaning wt., 117 yearling wt.
- Dam maintains a 351 day calving interval, 102/4 birth wt., 107/4 weaning wt., 108/4 yearling

34 | RFS ELEMENT E24

RYDEEN FARMS | Homo Black | Homo Polled | 5/8 SM 3/8 AN | Bull
BD: 3/5/17 | Tattoo: E24 | ASA#: 3309834

SIRE CLRS CONSTITUTION 311 C
CLRS AID XCELLENCE 311 A
CONNELLY IRISH 0204

DAM C6
RFS MISS ALLEGIANCE A17

ACT BW	84
ADJ HW	756
ADJ YM	1125
FRAME SC	6.0
ADG	2.4
WDA	3.1
ADJ SC	40.2

CE	BM	WW	YW	ADD	MCE	MILK	MMW	STAY	DOC	CW	YG	MARB	BF	REA	API	TI
11.5	0.1	59.1	97.5	0.24	10.9	20.3	49.9	8.9	13.1	28.6	-0.20	0.85	-0.030	0.62	152.2	82.0

- Great double black, low birth wt. Constitution son
- Top 2% of breed for marbling
- Dam is a first calf Connealy Irish with great maternal EPDs

35 | RFS ELITE E25

RYDEEN FARMS | Homo Black | Homo Polled | 3/4 SM 1/4 AN | Bull
BD: 3/6/17 | Tattoo: E25 | ASA#: 3309836

SIRE CLRS CONSTITUTION 311 C
CLRS AID XCELLENCE 311 A
MCM TOP GRADE 018X

DAM C97
RF SAMARA S85

ACT BW	90
ADJ HW	779
ADJ YM	1256
FRAME SC	6.0
ADG	3.0
WDA	3.3
ADJ SC	38.8

CE	BM	WW	YW	ADD	MCE	MILK	MMW	STAY	DOC	CW	YG	MARB	BF	REA	API	TI
9.2	1.5	69.6	114.1	0.28	8.3	19.5	54.3	11.0	11.4	40.4	-0.17	0.67	-0.038	0.60	144.5	81.3

- Homo black & homo polled with performance and good carcass
- Dam is a first calf Top Grade female ranked in top 10% of breed for marbling and API

36 | RFS EXCEED E5

RYDEEN FARMS | Homo Black | Hetero Polled | 3/4 SM 1/4 AN | Bull
BD: 2/27/17 | Tattoo: E5 | ASA#: 3309815

SIRE CLRS CONSTITUTION 311 C
CLRS AID XCELLENCE 311 A
MR ISHEE CATALYST

DAM C96
Y97

ACT BW	89
ADJ HW	803
ADJ YM	1319
FRAME SC	5.5
ADG	3.3
WDA	3.5
ADJ SC	38.9

CE	BM	WW	YW	ADD	MCE	MILK	MMW	STAY	DOC	CW	YG	MARB	BF	REA	API	TI
12.7	1.5	76.0	122.1	0.29	3.0	19.2	57.2	11.7	12.9	44.9	-0.16	0.58	-0.013	0.83	157.9	88.5

- Nice and balanced EPD's
- Top 10% of breed for weaning wt., yearling wt. and API
- Dam is a first calf Catalyst female who ranks in top 1% of breed for calving ease

37

RFS EMPEROR E10

RYDEEN FARMS

Homo Black | Homo Polled | 5/8 SM 3/8 AN | Bull
BD: 3/3/17 | Tattoo: E10 | ASA#: 3309820

J BAR J NIGHTRIDE 225Z
SIRE **CLRS CONSTITUTION 311 C**
CLRS AID XCELLENCE 311 A
HART FINAL ANSWER 0048

DAM **C122**

RFS MISS ACCORD A16

ACT BW	86
ADJ WW	804
ADJ YW	1233
FRAME SC	5.5
ADG	2.7
WDA	3.4
ADJ SC	37.1

CE	BW	WW	YW	ADG	MCE	MILK	MHW	STAY	DOC	CW	YG	MARB	BF	REA	API	TI
10.9	1.1	76.5	121.0	0.28	9.8	18.2	56.4	10.9	12.4	43.5	-0.01	0.66	-0.004	0.43	148.3	85.1

- Homo black & homo polled with great birth to weaning spread
- Top 10% of breed for weaning and yearling wt. EPDs
- Dam is an amazing first calf heifer that weaned this guy with no creep and average grass



38

RFS EMPIRE E11

RYDEEN FARMS

Homo Black | Homo Polled | 5/8 SM 3/8 AN | Bull
BD: 3/3/17 | Tattoo: E11 | ASA#: 3309821

J BAR J NIGHTRIDE 225Z
SIRE **CLRS CONSTITUTION 311 C**
CLRS AID XCELLENCE 311 A
CONNEALY IN SURE 8524

DAM **C91**

RFS MISS Z10

ACT BW	80
ADJ WW	713
ADJ YW	1154
FRAME SC	5.5
ADG	2.8
WDA	3.1
ADJ SC	36.4

CE	BW	WW	YW	ADG	MCE	MILK	MHW	STAY	DOC	CW	YG	MARB	BF	REA	API	TI
15.0	-1.2	63.6	112.3	0.30	10.6	25.8	57.6	12.3	13.0	35.8	-0.14	0.76	-0.011	0.66	163.7	85.2

- Homo black & homo polled, low birth wt. calving ease fellow
- Top 5% API, Top 10% of breed for TI
- Dam is a first calf heifer with a great EPD profile
- Heifer bull type

39

RFS EVEREADY E8

RYDEEN FARMS

Homo Black | Homo Polled | 5/8 SM 3/8 AN | Bull
BD: 3/1/17 | Tattoo: E8 | ASA#: 3309818

J BAR J NIGHTRIDE 225Z
SIRE **CLRS CONSTITUTION 311 C**
CLRS AID XCELLENCE 311 A
RF DEWPOINT W78

DAM **C196**

X1

ACT BW	77
ADJ WW	750
ADJ YW	1197
FRAME SC	5.5
ADG	2.8
WDA	3.2
ADJ SC	36.8

CE	BW	WW	YW	ADG	MCE	MILK	MHW	STAY	DOC	CW	YG	MARB	BF	REA	API	TI
12.9	-0.1	78.2	128.6	0.31	10.8	18.1	57.2	10.4	12.3	46.4	-0.16	0.57	-0.046	0.59	150.1	86.8

- Nice 5/8 blood Constitution son with balanced EPDs
- Top 4% Yearling, ADG, TI, Top 10% Weaning, Top 15% Marbling, MCE, API
- Dam's a first calf heifer

YEARLING BULLS



SVF Allegiance Y802

Homozygous Black and Homozygous Polled

We selected Allegiance as an out cross baldy pedigree. We have fallen in love with his progeny. We have used him for three seasons and have calved his first heifers in 2017. Our customers have been very pleased with their Allegiance herd sires and replacement females.

40

RFS ECLIPSE E73

RYDEEN FARMS

Homo Black | Homo Polled | 3/4 SM 1/4 AN | Bull
BD: 3/12/17 | Tattoo: E73 | ASA#: 3309885

MR NLC UPGRADE U8676
SIRE **SVF ALLEGIANCE Y802**
DOUBLE R MISS 29G T18
W/C UNITED 956Y

DAM **B31**

BRANT NUTMEG Y546R

ACT BW	82
ADJ WW	806
ADJ YW	1223
FRAME SC	5.5
ADG	2.6
WDA	3.4
ADJ SC	38.1

CE	BW	WW	YW	ADG	MCE	MILK	MHW	STAY	DOC	CW	YG	MARB	BF	REA	API	TI
11.0	0.7	79.3	124.0	0.28	6.1	17.7	57.3	9.3	12.3	44.6	-0.19	0.40	-0.015	0.90	133.2	81.3

- Homo black & homo polled with a jaw dropping phenotype
- Also, he ranks in the top 10% of the breed for weaning and yearling EPDs.
- Dam is a fantastic United female who ranks in the top 4% weaning and top 2% yearling wts.





LOT 41



LOT 42



LOT 43



LOT 44

41 | RFS ENDORSE E48

RYDEEN FARMS | Homo Black | Homo Polled | PB SM | Bull
BD: 3/9/17 | Tattoo: E48 | ASA#: 3309859

SIRE MR NLC UPGRADE U8676
SVF ALLEGIANCE Y802
DOUBLE R MISS 29G T18
ELM-MOUND UPGRADE Z4

DAM **BRANT BEYONCE B2104**
BRANT X4088

ACT BW	93
ADJ WW	888
ADJ YM	1301
FRAME SC	6.0
ADG	2.6
WDA	3.6
ADJ SC	37.9

CE	BW	WW	YW	ADD	MCE	MILK	MHW	STAY	DDC	CW	YG	MARB	BF	REA	API	TI
8.0	2.8	80.5	122.2	0.26	6.1	21.3	61.5	6.6	12.9	46.5	-0.33	0.05	-0.058	1.01	111.4	76.0

- Big time weaning and yearling numbers
- Dam was a beauty we purchased from Brant Farms

42 | RFS EXCITE E34

RYDEEN FARMS | Homo Black | Homo Polled | PB SM | Bull
BD: 3/7/17 | Tattoo: E34 | ASA#: 3309845

SIRE MR NLC UPGRADE U8676
SVF ALLEGIANCE Y802
DOUBLE R MISS 29G T18
OLF GRANDMASTER Y33

DAM **RFS MISS BOSNIA B189**
RF PINA COLADA

ACT BW	87
ADJ WW	820
ADJ YM	1332
FRAME SC	6.0
ADG	3.2
WDA	3.6
ADJ SC	42.3

CE	BW	WW	YW	ADD	MCE	MILK	MHW	STAY	DDC	CW	YG	MARB	BF	REA	API	TI
10.2	1.4	78.1	122.3	0.28	7.2	20.5	59.6	11.6	10.8	44.7	-0.36	0.18	-0.049	1.18	134.4	80.6

- Homo black & homo polled and in the top 4% of breed for weaning top 2% for yearling
- His calves will gain
- Dam is a solid black Grandmaster who ranks in top 10% API

43 | RFS EXCEL E76

RYDEEN FARMS | Homo Black | Homo Polled | PB SM | Bull
BD: 3/12/17 | Tattoo: E76 | ASA#: 3309888

SIRE MR NLC UPGRADE U8676
SVF ALLEGIANCE Y802
DOUBLE R MISS 29G T18
MR NLC SUPERIOR S6018

DAM **KNH SUPERIOR 146Z**
RFS MISS U146

ACT BW	90
ADJ WW	872
ADJ YM	1196
FRAME SC	5.5
ADG	2.0
WDA	3.5
ADJ SC	38.6

CE	BW	WW	YW	ADD	MCE	MILK	MHW	STAY	DDC	CW	YG	MARB	BF	REA	API	TI
9.2	1.4	75.1	105.7	0.19	8.5	17.1	54.6	11.9	13.4	34.3	-0.44	0.07	-0.059	1.20	124.1	74.7

- This purebred, homo black & homo polled baldy is as soggy has any bull we offer
- Can't wait to see his daughters
- Dam was purchased from KnH Simmentals, ND

44 | RFS EXTEND E85

RYDEEN FARMS | Homo Black | Homo Polled | PB SM | Bull
BD: 3/13/17 | Tattoo: E85 | ASA#: 3309897

SIRE MR NLC UPGRADE U8676
SVF ALLEGIANCE Y802
DOUBLE R MISS 29G T18
KBHR Y068 HARLEY

DAM **RFS MISS ALASKA A95**
U102

ACT BW	90
ADJ WW	882
ADJ YM	1326
FRAME SC	5.5
ADG	2.8
WDA	3.7
ADJ SC	40.1

CE	BW	WW	YW	ADD	MCE	MILK	MHW	STAY	DDC	CW	YG	MARB	BF	REA	API	TI
8.1	3.1	87.4	130.5	0.27	2.7	16.3	60.0	8.5	12.9	51.6	-0.34	-0.03	-0.065	1.06	112.9	77.3

- Homo black & homo polled that's in the top 1% for weaning and yearling EPDs
- Dam is a young Harley that weaned this second heaviest bull in 2017



KBHR Compass C324

Homozygous Black and Homozygous Polled

We purchased Compass from the Keller's as a new performance bull to add to our herd bull battery. He is ranked in the top 1% for weaning weight, yearling weight and ADG. High API and TI bull. We have been told by many that he was the deepest bodied, yearling Simmental bull sold in 2016 (as you can see by his picture). We are so very pleased with his progeny and as you can see, his sons and daughters have that "easy keeping" look.

45

RFS EXTRA E101

RYDEEN FARMS

Homo Black | Homo Polled | 5/8 SM 3/8 AN | Bull
BD: 3/15/17 | Tattoo: E101 | ASA#: 3309913

CCR GRAVITY 9064A

SIRE KBHR COMPASS C324

KBHR Y142

DAM Y79

W R BAR IN FOCUS 730

W3

ACT BW	105
ADJ WW	882
ADJ YW	1399
FRAME SC	6.0
ADG	3.3
WDA	4.1
ADJ SC	42.7

CE	BW	WW	YW	ADD	MCE	MILK	MHW	STAY	DOC	CW	YG	MARB	BF	REA	API	TI
10.5	4.3	95.0	150.5	0.35	10.6	19.3	66.8	16.1	13.3	65.5	-0.02	0.51	0.005	0.80	151.7	88.8

- Homo black & homo polled that is as thick and deep as can be
- He ranks in the top 15% of the breed in API and top 3% TI
- Dam sent a great Sure Bet son to Paul and Jeana Wollin in 2017



LOT 45

YEARLING BULLS

46

RFS ESCORT E107

RYDEEN FARMS

Homo Black | Homo Polled | 5/8 SM 3/8 AN | Bull
BD: 3/15/17 | Tattoo: E107 | ASA#: 3309919

CCR GRAVITY 9064A

SIRE KBHR COMPASS C324

KBHR Y142

DAM RFS MISS BREE B111

HART FINAL ANSWER 0048

RFS MISS Z124

ACT BW	92
ADJ WW	723
ADJ YW	1073
FRAME SC	5.5
ADG	2.2
WDA	3.1
ADJ SC	38.7

CE	BW	WW	YW	ADD	MCE	MILK	MHW	STAY	DOC	CW	YG	MARB	BF	REA	API	TI
10.8	2.4	69.2	101.5	0.20	13.3	22.9	57.5	12.8	11.6	33.6	-0.12	0.42	-0.020	0.51	132.2	73.5

- Homo black & homo polled, deep bodied, smooth sided Compass son
- Dam is a wonderful young Final Answer granddaughter
- Good carcass numbers



LOT 46

47

RFS EPIC E71

RYDEEN FARMS

Hetero Black | Homo Polled | PB SM | Bull
BD: 3/12/17 | Tattoo: E71 | ASA#: 3309883

CCR GRAVITY 9064A

SIRE KBHR COMPASS C324

KBHR Y142

DAM X72

MR NLC SUPERIOR S6018

RF SIGRID S25

ACT BW	97
ADJ WW	849
ADJ YW	1247
FRAME SC	6.0
ADG	2.5
WDA	3.6
ADJ SC	38.6

CE	BW	WW	YW	ADD	MCE	MILK	MHW	STAY	DOC	CW	YG	MARB	BF	REA	API	TI
6.5	3.6	83.4	124.2	0.26	11.6	25.1	66.8	15.5	11.7	48.7	-0.21	0.09	-0.015	1.01	128.3	77.3

- Long bodied, deep sided Compass son
- Dam is a solid black, moderate framed female with great maternal numbers



LOT 47



LOT 48



LOT 49



LOT 50



LOT 51

48 | RFS ENTOURAGE E83

RYDEEN FARMS | Homo Black | Homo Polled | 3/8 SM 5/8 AN | Bull
BD: 3/13/17 | Tattoo: E83 | ASA#: 3309895

SIRE CCR GRAVITY 9064A
KBHR COMPASS C324
KBHR Y142

DAM PAR 616 EXAMPLE

ACT BW	92
ADJ WW	806
ADJ YM	1232
FRAME SC	6.0
ADG	2.7
WDA	3.6
ADJ SC	39.6

CE	BW	WW	YW	ADD	MCE	MILK	MHW	STAY	DDC	CW	YG	MARB	BF	REA	API	TI
8.8	2.5	76.2	119.3	0.27	6.8	23.4	61.5	7.4		44.6	-0.02	0.33	0.004	0.51	110.4	72.0

- Great SimAngus herd bull with an 800+ weaning wt.
- Dam is a 616 purebred Angus that ratios 103/11 birth wt. and maintained a 363 day calving interval for 11 calves

49 | RFS EXPAND E79

RYDEEN FARMS | Black | Polled | PB SM | Bull
BD: 3/12/17 | Tattoo: E79 | ASA#: 3309891

SIRE 3C W/C RIGHT TRACK W9462
W/C WIDE TRACK 694Y
MISS WERNING 694S

DAM MR NLC SUPERIOR S6018
RF MISS J159

ACT BW	94
ADJ WW	743
ADJ YM	1082
FRAME SC	5.5
ADG	2.1
WDA	3.1
ADJ SC	42.6

CE	BW	WW	YW	ADD	MCE	MILK	MHW	STAY	DDC	CW	YG	MARB	BF	REA	API	TI
5.2	4.0	59.5	85.8	0.16	3.3	21.8	51.5	13.3	10.4	26.9	-0.34	0.00	-0.053	0.85	107.7	60.2

- Very long sided, wide topped Wide Track son
- Dam is a Superior cow that has a 366 day calving interval and ratios 102/6 weaning wt.

50 | RFS ENGINEER E142

RYDEEN FARMS | Homo Black | Homo Polled | PB SM | Bull
BD: 3/22/17 | Tattoo: E142 | ASA#: 3309954

SIRE MCM TOP GRADE 018X
HOOK'S BROADWAY 11B
HOOK'S WATER LILY 89W

DAM TNT TANKER U263
RFS MISS Z33
W25

ACT BW	92
ADJ WW	830
ADJ YM	1296
FRAME SC	6.0
ADG	2.9
WDA	3.7
ADJ SC	42.1

CE	BW	WW	YW	ADD	MCE	MILK	MHW	STAY	DDC	CW	YG	MARB	BF	REA	API	TI
0.9	3.0	76.9	121.0	0.28	11.3	25.7	64.2	13.9	11.2	46.3	-0.32	0.15	-0.051	1.03	121.3	75.3

- Wonderful phenotype, blaze face, herd sire prospect
- Use him on cows to add pay weight
- Dam is a powerful Tanker daughter, that ratios 101/4 birth wt., 107/4 weaning wt.

51 | RFS EXCELLENT E130

RYDEEN FARMS | Homo Black | Hetero Polled | PB SM | Bull
BD: 3/20/17 | Tattoo: E130 | ASA#: 3309942

SIRE MCM TOP GRADE 018X
HOOK'S BROADWAY 11B
HOOK'S WATER LILY 89W

DAM TNT TANKER U263
RFS MISS ARTIST A21
U64

ACT BW	98
ADJ WW	875
ADJ YM	1430
FRAME SC	6.5
ADG	3.5
WDA	4.0
ADJ SC	41.0

CE	BW	WW	YW	ADD	MCE	MILK	MHW	STAY	DDC	CW	YG	MARB	BF	REA	API	TI
-1.4	5.0	88.6	141.1	0.33	8.3	22.3	66.6	11.6	10.1	61.1	-0.24	0.12	-0.055	0.96	113.3	78.2

- Blaze face, Broadway son that ranks in top 1% of breed for weaning, yearling and ADG
- Dam ratios 107/3 weaning and 109/3 yearling wts.

52**RFS ESCALADE E112**

RYDEEN FARMS

Homo Black | Homo Polled | PB SM | Bull
BD: 3/16/17 | Tattoo: E112 | ASA#: 3309924

SIRE MCM TOP GRADE 018X
HOOK'S BROADWAY 11B
HOOK'S WATER LILY 89W

DAM TNT TANKER U263
RFS MISS Z84
RF RUTH

ACT BW 88
ADJ WW 777
ADJ YM 1205
FRAME SC 6.0
ADG 2.7
WDA 3.4
ADJ SC 39.8

CE	BW	WW	YW	ADD	MCE	MILK	MHW	STAY	DOC	CW	YG	MARB	BF	REA	API	TI
1.3	2.2	68.2	102.5	0.21	11.9	26.7	60.8	12.2	10.8	34.1	-0.39	0.01	-0.067	1.01	108.1	67.7

- Lower birth wt. Broadway son who is as long as a rail car
- Use him on cows to wean the big ones
- Dam ratios 101/4 birth wt. and 104/4 weaning wt.



LOT 52

53**RFS ESTEEM E132**

RYDEEN FARMS

Homo Black | Homo Polled | 3/4 SM 1/4 AN | Bull
BD: 3/20/17 | Tattoo: E132 | ASA#: 3309944

SIRE GW PREMIUM BEEF 021TS
GW ROBUST 605Z
GW MISS GPRD 123X

DAM **Z174**
RFS MISS T86

ACT BW 90
ADJ WW 756
ADJ YM 1197
FRAME SC 5.0
ADG 2.8
WDA 3.4
ADJ SC 38.0

CE	BW	WW	YW	ADD	MCE	MILK	MHW	STAY	DOC	CW	YG	MARB	BF	REA	API	TI
9.7	1.9	61.7	97.5	0.22	7.2	31.6	62.5	13.7	14.9	31.1	-0.32	0.45	-0.024	1.08	144.6	77.3

- Homo black & homo polled, great maternal bull ranks top 2% in breed for milk
- Dam ratios 104/4 birth wt. and has a "B" model female working in the herd



LOT 53

54**RFS EFFORT E197**

RYDEEN FARMS

Homo Black | Homo Polled | PB SM | Bull
BD: 4/11/17 | Tattoo: E197 | ASA#: 3310009

SIRE REMINGTON LOCK N LOADS4U
ELLINGSON LOAD UP B4022
BRANT R17K MS TOP SHELF

DAM GFI RAMBLER J114
RF RACHELLE
RFS MARILEE M22

ACT BW 95
ADJ WW 865
ADJ YM
FRAME SC 6.0
ADG 2.7
WDA 3.7
ADJ SC 39.2

CE	BW	WW	YW	ADD	MCE	MILK	MHW	STAY	DOC	CW	YG	MARB	BF	REA	API	TI
9.0	2.6	69.9	118.3	0.30	8.9	21.9	56.9	12.1	10.3	44.7	-0.27	-0.05	-0.044	0.93	117.0	68.5

- Homo black & homo polled, April born, Load Up son
- Dam is 13 years old and has weaned 11 in 368 interval, ratios 103/11 weaning wt.

55**RFS EXACT E158**

RYDEEN FARMS

Hetero Black | Homo Polled | PB SM | Bull
BD: 3/28/17 | Tattoo: E158 | ASA#: 3309970

SIRE REMINGTON LOCK N LOADS4U
ELLINGSON LOAD UP B4022
BRANT R17K MS TOP SHELF

DAM HSF HIGH ROLLER 12T
AFC BERNADETTE B28
AFC XIPIL X35

ACT BW 88
ADJ WW 819
ADJ YM 1243
FRAME SC 6.0
ADG 2.7
WDA 3.4
ADJ SC 38.3

CE	BW	WW	YW	ADD	MCE	MILK	MHW	STAY	DOC	CW	YG	MARB	BF	REA	API	TI
13.9	0.7	71.6	116.8	0.28	7.1	24.7	60.5	11.8	13.1	40.7	-0.33	-0.06	-0.052	0.99	125.8	72.6

- Low birth wt. bull that ranks in the top 10% of breed for calving ease
- Dam is a great, young High Roller female purchased from Anderson Farms

56**RFS EZRA E99**

RYDEEN FARMS

Homo Black | Homo Polled | PB SM | Bull
BD: 3/15/17 | Tattoo: E99 | ASA#: 3309911

SIRE BDV TRUE GRIT 11X
BBS TRUE JUSTICE B10
BBS MISS JUSTICE Z7

DAM KBHR Y068 HARLEY
B46
W15

ACT BW 85
ADJ WW 798
ADJ YM 1127
FRAME SC 6.0
ADG 2.1
WDA 3.2
ADJ SC 38.7

CE	BW	WW	YW	ADD	MCE	MILK	MHW	STAY	DOC	CW	YG	MARB	BF	REA	API	TI
14.8	0.5	66.5	95.5	0.18	7.9	22.3	55.6	15.1	11.2	27.2	-0.35	0.23	-0.038	1.02	144.7	75.8

- Homo black & homo polled, calving ease herd bull
- Ranked in top 10% of breed for CE and API
- His young dam has raised 2 calves, we retained the heifer in the herd



LOT 56

YEARLING BULLS

57 | RFS EXCLUSIVE E64

RYDEEN FARMS

Homo Black | Homo Polled | 3/4 SM 1/4 AN | Bull
BD: 3/11/17 | Tattoo: E64 | ASA#: 3309876

SIRE TRIPLE C SINGLETARY S3H
CCR COWBOY CUT 5048Z
CCR MS 4045 TIME 7322T
HART FINAL ANSWER 0048
DAM B202
RFS MISS Z71

ACT BW 88
ADJ MW 760
ADJ YW 1181
FRAME SC 6.0
ADD 2.7
WDA 3.3
ADJ SC 41.5

CE	BW	WW	YW	ADD	MCE	MILK	MHW	STAY	DOC	CW	YG	MARB	BF	REA	API	TI
15.0	1.5	77.0	107.3	0.19	12.6	27.7	66.2	12.8	13.3	35.2	-0.12	0.55	-0.019	0.55	148.5	83.3

- Homo black & homo polled Cowboy Cut son with fantastic maternal EPDs
- Dam is a young Final Answer daughter that ranked in the top 20% for API & 10% TI



LOT 59



LOT 60



LOT 61

58 | RFS EDDIE E148

RYDEEN FARMS

Black | Polled | PB SM | Bull
BD: 3/24/17 | Tattoo: E148 | ASA#: 3309960

SIRE TRIPLE C SINGLETARY S3H
CCR COWBOY CUT 5048Z
CCR MS 4045 TIME 7322T
KENCO/MF POWERLINE 204L
DAM RFS MISS T131
RFS EFFIE H83

ACT BW 85
ADJ MW 745
ADJ YW 1120
FRAME SC 5.5
ADD 2.3
WDA 3.2
ADJ SC 38.1

CE	BW	WW	YW	ADD	MCE	MILK	MHW	STAY	DOC	CW	YG	MARB	BF	REA	API	TI
11.8	1.5	68.8	103.0	0.21	10.7	29.4	63.8	11.8	13.3	33.3	-0.22	0.29	-0.026	0.79	136.8	77.5

- Solid black, low birth wt., strong maternal bull
- Dam has weaned 9 calves and grand dam has weaned 14 calves. Both females accomplished this in a 366 day interval.

59 | RFS ERIE E144

RYDEEN FARMS

Homo Black | Hetero Polled | 1/2 SM 1/2 AN | Bull
BD: 3/24/17 | Tattoo: E144 | ASA#: 3309956

SIRE CONNEALY CHECKMARK
HART CHECKMARK 4117
HART MISTI 7017
ELLINGSON LEGACY M229
DAM Y42
RFS EFFIE H83

ACT BW 90
ADJ MW 825
ADJ YW 1351
FRAME SC 6.0
ADD 3.3
WDA 3.9
ADJ SC 41.2

CE	BW	WW	YW	ADD	MCE	MILK	MHW	STAY	DOC	CW	YG	MARB	BF	REA	API	TI
14.5	0.1	77.0	129.9	0.33	10.7	23.2	61.7	10.1	10.9	47.6	-0.14	0.48	-0.026	0.70	145.7	84.3

- Checkmark calves come easy and wean with the best
- Dam is herd favorite Olie daughter
- Perfect phenotype and performance

60 | RFS EVAN E162

RYDEEN FARMS

Hetero Black | Homo Polled | 1/2 SM 1/2 AN | Bull
BD: 3/20/17 | Tattoo: E162 | ASA#: 3309974

SIRE CONNEALY CHECKMARK
HART CHECKMARK 4117
HART MISTI 7017
KBHR Y068 HARLEY
DAM RFS MISS ARIZONA A111
X97

ACT BW 100
ADJ MW 799
ADJ YW 1286
FRAME SC 6.0
ADD 3.1
WDA 3.7
ADJ SC 43.0

CE	BW	WW	YW	ADD	MCE	MILK	MHW	STAY	DOC	CW	YG	MARB	BF	REA	API	TI
9.5	2.5	78.5	125.9	0.30	8.6	23.2	62.5	9.2	11.2	48.6	-0.16	0.27	-0.036	0.71	120.8	75.9

- Ranks in top 10% for weaning and yearling EPDs
- Dam carries a little more birth wt., but the calves outperform the class

61 | RFS EMMETT E168

RYDEEN FARMS

Homo Black | Homo Polled | 1/2 SM 1/2 AN | Bull
BD: 3/31/17 | Tattoo: E168 | ASA#: 3309980

SIRE CONNEALY CHECKMARK
HART CHECKMARK 4117
HART MISTI 7017
HOOKS SHEAR FORCE 38K
DAM U4
RF SEASON S141

ACT BW 84
ADJ MW 777
ADJ YW 1184
FRAME SC 6.0
ADD 2.6
WDA 3.5
ADJ SC 38.6

CE	BW	WW	YW	ADD	MCE	MILK	MHW	STAY	DOC	CW	YG	MARB	BF	REA	API	TI
15.8	-1.1	65.6	97.6	0.20	9.9	26.1	58.9	11.0	11.2	26.2	-0.27	0.52	-0.021	0.86	146.6	79.8

- Low birth wt., homo black & homo polled.
- Ratios 108 birth wt., deep soggy bull
- Dam's a great Shear Force cow that's sold 4 herd bulls in Vision Sales

YEARLING BULLS

62

RFS EDISON E175

RYDEEN FARMS

Homo Black | Homo Polled | 1/2 SM 1/2 AN | Bull
BD: 4/1/17 | Tattoo: E175 | ASA#: 3309987

CONNEALY CHECKMARK
SIRE HART CHECKMARK 4117
 HART MISTI 7017
 MR NLC SUPERIOR S6018
DAM Y41
 RFS MISS T98

ACT BW 88
 ADJ WW 751
 ADJ YW 1175
 FRAME SC 5.5
 ADG 2.7
 WDA 3.4
 ADJ SC 38.7

CE	BW	WW	YW	ADG	MCE	MLK	MWW	STAY	DOC	CW	YG	MARB	BF	REA	API	TI
12.5	-0.1	62.3	96.7	0.22	10.3	25.3	56.5	10.5	10.7	27.4	-0.25	0.37	-0.019	0.82	130.9	72.6

- Low birth wt, solid black Checkmark with a great maternal set of numbers
- Dam is a 5 frame cow that always weans a keeper

63

BRANT EASTON E550C

RYDEEN FARMS

Homo Black | Homo Polled | 3/8 SM 5/8 AN | Bull
BD: 2/23/17 | Tattoo: E550C | ASA#: 3228172

BASIN PAYWEIGHT 1682
SIRE HART PAYWEIGHT 5015
 HART BLACKCAP MAID 3044
 GLS NEW DIRECTION X184
DAM BRANT CUTIE C550A
 BRANT AVA A55

ACT BW 64
 ADJ WW 686
 ADJ YW 1087
 FRAME SC 5.5
 ADG 2.6
 WDA 2.9
 ADJ SC 38.7

CE	BW	WW	YW	ADG	MCE	MLK	MWW	STAY	DOC	CW	YG	MARB	BF	REA	API	TI
15.0	-3.1	62.5	112.1	0.31	6.5	23.1	54.4	7.3	11.1	32.9	-0.11	0.42	-0.011	0.53	130.9	75.0

- Homo black and polled, low birth wt. SimAngus
- Dam is a first calf heifer we purchased from Brant Farms
- Heifer bull



Ultrasound Information
 Will Be Available Sale
 Day and Online at

www.rydeenfarms.com



YEARLING BULLS

UNDERSTANDING EPDS

Expected Progeny Differences (EPDs): EPDs are the most accurate and effective tool available for comparing genetic levels. In using EPDs, the difference between two sires' EPDs represents the unit difference expected in the performance of their progeny. For example, if sires A and B have EPDs of +10 and -5, a 15-unit difference would be expected in their progeny (moving from -5 to +10 yields 15 units). Key to using EPDs is knowing in what units they are expressed. For example, if the above case referred to weaning weight EPDs, sire A would be expected to sire 15 pounds more weaning weight than sire B. If calving ease was the trait, sire A would be expected to sire 15 percent more unassisted births in first-calf heifers; in other words, if sire B sired 30 assists in a group of 100 heifers, we would expect sire A to require 15 assists. A percentile-ranking chart is required to determine where a bull's EPDs rank him relative to other bulls in the breed. For more detailed information about EPDs and \$ indexes, visit www.simmental.org. Listed below are the units in which ASA EPDs are expressed:

Calving Ease (CE): Percent of unassisted births when used on heifers.

Birth Weight (BW): Pounds of birth weight.

Weaning Weight (WW): Pounds of weaning weight.

Yearling Weight (YW): Pounds of yearling weight.

Maternal Calving Ease (MCE): Percent of unassisted births in first-calving daughters.

Milk (MLK): Pounds of weaning weight due to milk.

Maternal Weaning Weight (MWW): Pounds of weaning weight due to milk and growth.

Stayability (STAY): Percent of daughters remaining in the cowherd at six years of age.

Docility (DOC): Percent of offspring receiving a disposition score of 1 (docile).

Carcass Weight (CW): Pounds of carcass weight at 475 days.

Yield Grade (YG): Carcass yield grade score at 475 days.

Marbling (MARB): Carcass marbling score at 475 days.

Back Fat (BF): Inches of carcass back fat at 475 days.

Ribeye Area (REA): Square inches of carcass ribeye at 475 days.

Warner-Bratzler Shear Force (WBSF): Pounds of force required to shear a rib-eye steak.

All-Purpose Index (API): Dollars per cow exposed under an all-purpose-sire scenario. (See \$ Indexes for more details.)

Terminal Index (TI): Dollars per cow exposed under a terminal-sire scenario. (See TI for more details.)

\$ Indexes: Though EPDs allow for the comparison of genetic levels for many economically important traits, they only provide pieces of the economic puzzle. This is where \$ indexes come in. Through well-conceived, rigorous mathematical computation, \$ indexes blend EPDs and economics to estimate an animal's overall impact on integrated commercial production. The same technology that led to the dramatic progress in swine, poultry and dairy genetics over the last several decades was used to develop the following \$ indexes:

All-Purpose Index (API): Evaluates sires for use on the entire cow herd (bred to both Angus first-calf heifers and mature cows) with the portion of their daughters required to maintain herd size retained and the remaining heifers and steers put on feed and sold grade and yield.

Terminal Index (TI): Evaluates sires for use on mature Angus cows with all offspring put on feed and sold grade and yield.

Using API and TI: First, determine which index to use; if you are keeping replacements use API, if not, use TI. Then, just as with EPDs, zero in on the unit difference between bulls. (As described above, index units are in dollars per cow exposed.) The difference can be used to determine how much a bull is worth compared to another. Put another way, how much you can pay for one bull compared to another. For example, when buying an all-purpose-type sire, you can quickly figure a bull scoring +100 for API is worth an extra \$6,000 over a +50 bull if both are exposed to 30 cows over 4 years (\$50 diff. x 30 hd. x 4 yr. = \$6,000). A percentile-ranking chart is required to determine where a bull's index value ranks him relative to other bulls in the breed. For more detailed information about EPDs and \$ indexes, visit: www.simmental.org



RFS Bulletproof B42

Homozygous Polled and Dilutor Free

Bulletproof was our high selling red bull in our 2015 sale to Travis Beeson, SD. His son, RFS Daytona, was our high selling red bull in 2017 to Kenner Ranch, ND. He has grown into a tremendous, out cross red herd sire and has been leased to Genex. We think his phenotype is excellent and his EPD's and carcass traits are superb. Check out his bred heifers in the offering.



LOT 64



LOT 65



LOT 66

64

RFS EXPO E32

RYDEEN FARMS

Red Non-Diluter | Homo Polled | PB SM | Bull
BD: 3/7/17 | Tattoo: E32 | ASA#: 3309843

GW REDESTINED 642X
SIRE RFS BULLETPROOF B42
RFS MISS Z119
THSR BOMBARDIER U802
DAM RFS MISS APPLAUD A14
Y67

ACT BW	88
ADJ WW	862
ADJ YM	1195
FRAME SC	6.0
ADG	2.1
WDA	3.4
ADJ SC	40.8

CE	BW	WW	YW	ADG	MCE	MILK	MHW	STAY	DDC	CW	YG	MARB	BF	REA	API	TI
10.8	2.1	72.9	109.0	0.23	10.5	19.9	56.3	17.3	11.3	37.6	-0.35	0.23	-0.074	0.86	144.4	77.2

- Homo polled, dilutor free standout herd sire
- Top 10% API, top 15% TI
- Dam is a sweetheart who raises sale favorites. Last year, her Complete son went to Emmons Ranch, Montana

65

RFS EDITOR E75

RYDEEN FARMS

Red Non-Diluter | Homo Polled | PB SM | Bull
BD: 3/12/17 | Tattoo: E75 | ASA#: 3309887

GW REDESTINED 642X
SIRE RFS BULLETPROOF B42
RFS MISS Z119
LBR CROCKETT R81
DAM W52
RF RAINBOW

ACT BW	91
ADJ WW	778
ADJ YM	1187
FRAME SC	5.5
ADG	2.6
WDA	3.4
ADJ SC	40.1

CE	BW	WW	YW	ADG	MCE	MILK	MHW	STAY	DDC	CW	YG	MARB	BF	REA	API	TI
8.5	2.1	70.9	107.5	0.23	7.1	19.2	54.6	15.6	12.5	36.9	-0.29	0.37	-0.047	0.86	145.2	78.9

- Homo polled, dilutor free nice herd sire with carcass numbers
- Top 10% of breed in marbling, API & TI
- Dam is 9 years old and solid, deep red, easy keeper with a great udder

66

RFS END ZONE E78

RYDEEN FARMS

Red Non-Diluter | Homo Polled | PB SM | Bull
BD: 3/12/17 | Tattoo: E78 | ASA#: 3309890

GW REDESTINED 642X
SIRE RFS BULLETPROOF B42
RFS MISS Z119
TNT AXIS X307
DAM LRS MS AXIS 281Z
LRS MS HUMMER 708T

ACT BW	92
ADJ WW	833
ADJ YM	1219
FRAME SC	5.5
ADG	2.4
WDA	3.5
ADJ SC	40.6

CE	BW	WW	YW	ADG	MCE	MILK	MHW	STAY	DDC	CW	YG	MARB	BF	REA	API	TI
9.0	2.7	79.3	120.3	0.26	9.6	21.4	61.0	16.5	11.9	45.2	-0.25	0.38	-0.045	0.86	150.3	83.7

- Homo polled, dilutor free outcross red herd bull prospect
- Outstanding numbers: top 3% for weaning and yearling, top 4% for API, top 2% TI
- Dam was purchased from Lassle Ranch and has great feet, legs & udder



Ellingson Complete A358

Homozygous Polled and Dilutor Free

We were looking for a red, out cross performance bull for our red program and found Complete at Ellingson Simmentals. He has really done a nice job for us. This dark red, 6 frame bull adds as much muscle, depth of body, with above average scrotal as any red sire we have used, either natural service or AI. His sons consistently wean at the top of the class. We were very pleased with his heifers, calving out his first crop last spring.

67

RFS ERROL E163

RYDEEN FARMS

Red Non-Diluter | Hetero Polled | PB SM | Bull
BD: 3/30/17 | Tattoo: E163 | ASA#: 3309975

SIRE R PLUS HARD ROCK 145X
ELLINGSON COMPLETE A358
ELLINGSON MS AMIGO X5

DAM RFS T46
RFS MISS Z119
RFS MISS T91

ACT BW 76
ADJ WW 829
ADJ YW 1104
FRAME SC 5.5
ADG 1.7
WDA 3.2
ADJ SC 40.1

CE	BW	WW	YW	ADD	MCE	MILK	MHW	STAY	DOC	CW	YG	MARB	BF	REA	API	TI
11.2	0.7	63.8	93.4	0.19	13.8	19.4	51.3	12.3	12.3	26.3	-0.37	0.03	-0.053	0.93	122.9	68.5

- Homo polled, dilutor free Complete son
- Balanced EPDs with outstanding birth to weaning numbers (102/4 birth wt, 107/4 weaning wt., 105/4 yearling wt.)
- Dam is also RFS Bulletproof's mother and is put together right



LOT 67

YEARLING BULLS

68

RFS EDSSEL E125

RYDEEN FARMS

Red Non-Diluter | Homo Polled | PB SM | Bull
BD: 3/19/17 | Tattoo: E125 | ASA#: 3309937

SIRE R PLUS HARD ROCK 145X
ELLINGSON COMPLETE A358
ELLINGSON MS AMIGO X5

DAM U26
HOOKS SHEAR FORCE 38K
RF SEQUEL S159

ACT BW 90
ADJ WW 878
ADJ YW 1245
FRAME SC 5.5
ADG 2.3
WDA 3.6
ADJ SC 41.0

CE	BW	WW	YW	ADD	MCE	MILK	MHW	STAY	DOC	CW	YG	MARB	BF	REA	API	TI
11.8	2.0	78.9	113.4	0.22	14.0	18.1	57.5	12.0	12.2	39.7	-0.36	0.15	-0.042	1.16	132.7	78.8

- Homo polled, typical Complete son.
- "Heads up" bull that is long, deep, big scrotal—all the tools to get the job done
- Dam is a wonderful Shear Force that weans the best with last year's calf going to Mike Traxinger, SD



LOT 68

69

RFS ELDER E159

RYDEEN FARMS

Red Non-Diluter | Homo Polled | PB SM | Bull
BD: 3/28/17 | Tattoo: E159 | ASA#: 3309971

SIRE R PLUS HARD ROCK 145X
ELLINGSON COMPLETE A358
ELLINGSON MS AMIGO X5
GCF MR AMIGO

DAM Y25
U14

ACT BW 88
ADJ WW 779
ADJ YW 1099
FRAME SC 5.5
ADG 2.0
WDA 3.2
ADJ SC 41.5

CE	BW	WW	YW	ADD	MCE	MILK	MHW	STAY	DOC	CW	YG	MARB	BF	REA	API	TI
11.1	0.9	64.8	85.9	0.13	12.8	6.5	38.9	11.3	12.4	21.7	-0.38	0.07	-0.057	0.89	121.1	68.0

- Homo polled, long bodied, deep sided fellow with balanced EPDs
- Dam is 7 years old and ratios 110/5 birth wt.
- She has sold calves in 4 Vision sales



LOT 69



70 | RFS ENTERPRISE E81

RYDEEN FARMS | Red Diluter | Homo Polled | 3/4 SM 1/4 AR | Bull
BD: 3/12/17 | Tattoo: E81 | ASA#: 3309893

SIRE R PLUS HARD ROCK 145X
ELLINGSON COMPLETE A358
ELLINGSON MS AMIGO X5
GLACIER CHATEAU 744

DAM RF RHEA
RFS JAMIE G60

ACT BW	88
ADJ WW	706
ADJ YW	1177
FRAME SC	6.0
ADG	3.0
WDA	3.4
ADJ SC	39.1

CE	BW	WW	YW	ADG	MCE	MILK	MWW	STAY	DOC	CW	YG	MARB	BF	REA	API	TI
9.9	1.3	70.0	95.5	0.16	12.8	13.9	48.9	9.4	9.8	28.1	-0.26	0.05	-0.041	0.71	105.8	65.1

- Homo polled, 3/4 blood, nice, herd bull prospect
- Dam is a Glacier Chateau 1/2 blood, great udder and feet at 13 years old

71 | RFS ERSKINE E179

RYDEEN FARMS | Red Non-Diluter | Homo Polled | 3/4 SM 1/4 AR | Bull
BD: 4/2/17 | Tattoo: E179 | ASA#: 3309991

SIRE R PLUS HARD ROCK 145X
ELLINGSON COMPLETE A358
ELLINGSON MS AMIGO X5
BFCK CHEROKEE CNYN 4912

DAM Y24
W4

ACT BW	95
ADJ WW	930
ADJ YW	1238
FRAME SC	5.5
ADG	2.0
WDA	3.7
ADJ SC	38.7

CE	BW	WW	YW	ADG	MCE	MILK	MWW	STAY	DOC	CW	YG	MARB	BF	REA	API	TI
10.8	2.3	82.2	117.3	0.22	10.3	16.0	57.1	11.2	12.1	42.3	-0.28	0.19	-0.047	0.90	122.2	75.6

- Homo polled and solid red
- Ranked in top 3% of breed for weaning wt. and our #1 red weaning wt. bull in 2017
- Dam is a beautiful Cherokee Canyon, ranked in top 10% for milk and MCE

72 | RFS ERNIE E1

RYDEEN FARMS | Red Non-Diluter | Hetero Polled | PB SM | Bull
BD: 2/13/17 | Tattoo: E1 | ASA#: 3309806

SIRE GW PREDESTINED 701T
HOOK'S XPECTATION 36X
HOOKS MIKA 141M
ELLINGSON COMPLETE A358

DAM C48
HOOK'S WRANGLER 93W

ACT BW	60
ADJ WW	624
ADJ YW	1119
FRAME SC	5.0
ADG	3.1
WDA	2.7
ADJ SC	36.1

CE	BW	WW	YW	ADG	MCE	MILK	MWW	STAY	DOC	CW	YG	MARB	BF	REA	API	TI
13.8	-1.0	66.2	92.8	0.17	12.5	24.0	57.1	14.1	14.2	23.2	-0.37	0.36	-0.045	0.96	150.9	80.7

- Calving ease, low birth weight heifer bull
- Dam is a first calf heifer, ranked in top 2% for weaning wt.

North Dakota
Simmental
Association **Classic SALE**

Thank You To The Buyers Of Our
ND Simmental Classic Consignments...
Joe Berg of Little Falls, MN and
G and D Simmentals of Calvin, ND



PUREBRED SIMMENTAL EPD AVERAGES

%	API	TI	CE	BW	WW	ADG	YW	MCE	MLK	MWW	STY	DOC	CWT	YG	MRB	BF	REA	SF
1	163.73	86.19	18.4	-2.4	85.8	0.3	131.1	15.7	32.7	68.5	193	15.2	53.8	-0.49	0.49	-0.1	1.17	-0.51
50	124.4	69.9	9.8	1.8	64.4	0.19	94.6	8.3	21.3	53.4	11.9	11	28.7	-0.3	0.14	-0.053	0.75	-0.32
Avg	124.4	69.9	9.8	1.8	64.4	0.19	94.6	8.3	21.3	53.4	11.9	11	28.7	-0.3	0.14	-0.053	0.75	-0.32

HYBRID SIMMENTAL EPD AVERAGES

%	API	TI	CE	BW	WW	ADG	YW	MCE	MLK	MWW	STY	DOC	CWT	YG	MRB	BF	REA	SF
1	179.55	92.21	21.7	-4.4	86.5	0.34	138.7	14.4	32	68.3	188	16.1	56.2	-0.51	0.87	-0.117	1.08	-0.52
50	124.4	70.1	11.7	0.5	62.8	0.21	97	6.7	21.1	52.5	10	11.2	28.5	-0.21	0.33	-0.036	0.61	-0.31
Avg	124.4	70.1	11.7	0.5	62.8	0.21	97	6.7	21.1	52.5	10	11.2	28.5	-0.21	0.33	-0.036	0.61	-0.31

REFERENCE SERVICE SIRES



MEET OUR NEW HERD SIRES



BRED HEIFERS

PUREBRED SIMMENTAL REFERENCE SIRES

Name	ASA #	Sire x Dam	Breeds	CE	BW	WW	YW	ADG	MCE	Milk	MW	API	TI
WS ALL ABOARD B80	2852207	WS All-Around Z35 x WS Little Sister W37	PB SM	15.8	-1.6	86.0	127.1	0.26	16.6	23.1	66.1	174.8	100.7
CLRS DIVIDEND 405D	3097854	CLRS After Shock 604A x CLRS Bonnie 405B	PB SM	18.4	-2.8	65.3	105.6	0.25	10.3	23.6	56.2	174.6	86.4

PUREBRED ANGUS REFERENCE SIRES (ASA EPDS)

Name	ASA #	Sire x Dam	Breeds	CE	BW	WW	YW	ADG	MCE	Milk	MW	API	TI
CONNELY CONFIDENCE PLUS	3174651	Connealy Confidence 0100 x Elbanna of Conanga 1209	PB AN	24.4	-4.5	75.7	140.3	0.40	10.2	26.2	64.0	146.2	81.0
HART CHECKMARK 4117	3025534	Connealy Checkmark x Hart Misti 7017	PB AN	16.3	-2.0	72.9	124.4	0.32	8.8	29.6	66.1	138.0	82.9

SIMANGUS REFERENCE SIRES

Name	ASA #	Sire x Dam	Breeds	CE	BW	WW	YW	ADG	MCE	Milk	MW	API	TI
J BAR J NIGHTRIDE 225Z	2628568	GW Premium Beef 021TS x J Bar J Miss ND 793X	5/8 SM 3/8 AN	22.8	-4.8	56.5	91.8	0.22	11.4	12.7	41.0	179.6	88.3
CLRS CONSTITUTION 311 C	2984470	J Bar J Nightride 225Z x CLRS Aid Xcellence 311A	5/8 SM 3/8 AN	10.5	-0.4	74.6	127.2	0.33	8.7	15.9	53.2	162.2	93.9
CDI BIG TIME 297D	3152402	WS Prime Time B6 x CDI Ms Irene 1B	3/4 SM 1/8 AN 1/8 AR	17.4	-2.2	78.9	117.9	0.24	11.1	18.6	58.0	173.0	92.1
ES D-LUXE DB21	3185499	W/C Lock Down 206Z x ES B21	1/2 SM 3/8 AN 1/8 AR	15.3	-0.7	88.1	142.7	0.34	2.8	12.7	56.8	147.5	89.9

73**RFS MISS DAISY D69****RYDEEN FARMS****Homo Black | Homo Polled | PB SM | Cow**

BD: 3/13/16 | Tattoo: D69 | ASA#: 3178540 | Adj. BW: 87 | Adj. WW: 683

MR NLC UPGRADE U8676

SIRE SVF ALLEGIANCE Y802

DOUBLE R MISS 29G T18

MR NLC SUPERIOR S6018

DAM X81

RF MISS J82

PROJECTED EPDS

CE	15.4
BW	-1.1
WW	65.2
YW	102.7
MCE	10.1
MILK	17.3
MWW	49.9

CE	BW	WW	YW	ADG	MCE	MILK	MWW	STAY	DOC	CM	YG	MARB	BF	REA	API	TI
8.0	2.6	73.8	113.5	0.25	8.7	21.8	58.7	12.1	12.1	41.2	-0.43	-0.03	-0.057	1.28	116.8	71.0

- Beautiful baldy with a maternal brother in the yearling line up, RFS Expert E68
- Dam's got great maternal EPDs
- Ultrasound safe to AI date with an early March bull calf
- AI'd on 5/24 to Nightride, PE to Constitution 6/26-7/12/2017

74**RFS MISS DAPHNE D84****RYDEEN FARMS****Hetero Black | Homo Polled | 3/4 SM 1/4 AN | Cow**

BD: 3/15/16 | Tattoo: D84 | ASA#: 3178555 | Adj. BW: 84 | Adj. WW: 657

GW PREMIUM BEEF 021TS

SIRE GW ROBUST 605Z

GW MISS GPRD 123X

MR NLC SUPERIOR S6018

DAM X97

RF MISS J159

PROJECTED EPDS

CE	9.3
BW	1.6
WW	74.3
YW	119.4
MCE	8.2
MILK	20.5
MWW	57.7

CE	BW	WW	YW	ADG	MCE	MILK	MWW	STAY	DOC	CM	YG	MARB	BF	REA	API	TI
8.0	3.5	74.0	111.5	0.23	7.6	25.1	62.1	13.5	14.2	41.2	-0.35	0.23	-0.048	1.10	131.6	76.4

- Super phenotype
- Dam's an "X" model Superior that ratios 102/6 weaning wt
- Ultrasound safe to AI date with an early March heifer calf
- AI'd on 5/24 to Constitution, PE to Constitution 6/26-7/12/2017

75**RFS MISS DAKOTA D83****RYDEEN FARMS****Homo Black | Homo Polled | 3/4 SM 1/4 AN | Cow**

BD: 3/14/16 | Tattoo: D83 | ASA#: 3178554 | Adj. BW: 90 | Adj. WW: 641

GW PREMIUM BEEF 021TS

SIRE GW ROBUST 605Z

GW MISS GPRD 123X

RF DEWPOINT W78

DAM RFS MISS ACADEMIC A160

RF SEQUEL S159

PROJECTED EPDS

CE	16.6
BW	-0.9
WW	67.9
YW	102.5
MCE	8.3
MILK	16.8
MWW	50.7

CE	BW	WW	YW	ADG	MCE	MILK	MWW	STAY	DOC	CM	YG	MARB	BF	REA	API	TI
10.3	3.1	79.3	113.1	0.21	5.1	20.8	60.4	13.0	14.4	41.1	-0.42	0.29	-0.058	1.24	138.8	81.5

- Solid black, long as a rail car, ranks in top 10% of breed for weaning wt.
- Dam ranks in top 2% for weaning wt. and had an actual weight of 1510 on 10/25/17
- Ultrasound safe to AI date with an early March heifer calf
- AI'd on 5/24 to Nightride, PE to Constitution 6/26-7/12/2017

76**RFS MISS DEENA D87****RYDEEN FARMS****Homo Black | Homo Polled | 3/4 SM 1/4 AN | Cow**

BD: 3/15/16 | Tattoo: D87 | ASA#: 3178558 | Adj. BW: 91 | Adj. WW: 712

GW PREMIUM BEEF 021TS

SIRE GW ROBUST 605Z

GW MISS GPRD 123X

TNT TANKER U263

DAM RFS MISS Z71

RF MISS J82

PROJECTED EPDS

CE	14.5
BW	-0.7
WW	72.0
YW	113.1
MCE	9.7
MILK	26.3
MWW	62.2

CE	BW	WW	YW	ADG	MCE	MILK	MWW	STAY	DOC	CM	YG	MARB	BF	REA	API	TI
10.5	1.5	78.7	120.6	0.26	9.1	28.9	68.2	15.0	14.1	43.7	-0.39	0.18	-0.040	1.32	140.9	81.4

- Wonderful EPD profile
- Performance, maternal and carcass lady
- Ultrasound safe to AI date with an early March heifer calf
- AI'd on 5/24 to Dividend, PE to Constitution 6/26-7/12/2017



77**RFS MISS DAINTY D158****RYDEEN FARMS**

Homo Black | Homo Polled | PB SM | Cow

BD: 3/30/16 | Tattoo: D158 | ASA#: 3178630 | Adj. BW: 96 | Adj. WW: 677

REMINGTON LOCK N LOADS4U

SIRE ELLINGSON LOAD UP B4022

BRANT R17K MS TOP SHELF

TNT TANKER U263

DAM RFS MISS ABUZZ A84

RF STELLA S69

PROJECTED EPDS

CE	15.2
BW	-1.0
WW	64.7
YW	103.3
MCE	10.4
MILK	16.1
MWW	48.5

CE	BW	WW	YW	ADG	MCE	MILK	MWW	STAY	DOC	CW	YG	MARB	BF	REA	API	TI
7.5	2.9	72.9	114.8	0.26	9.3	19.5	56.0	13.3	11.3	42.6	-0.31	-0.03	-0.034	1.09	117.9	69.5

- Exciting baldy, first Load Up bred heifer we've offered
- Dam's a Tanker that ranks in the top 1% of breed for weaning wt
- Ultrasound safe to AI date with an early March bull calf
- AI'd on 5/24 to Nightride, PE to Constitution 6/26-7/12/2017



LOT 77

78**RFS MISS DREAMY D192****RYDEEN FARMS**

Homo Black | Homo Polled | 3/4 SM 1/4 AN | Cow

BD: 4/12/16 | Tattoo: D192 | ASA#: 3178662 | Adj. BW: 92 | Adj. WW: 673

WELSH'S WARSAW 312Z

SIRE HART 003B

HART MISS 371Z

W/C UNITED 956Y

DAM B33

BRANT NUTMEG Y546R

PROJECTED EPDS

CE	18.1
BW	-2.2
WW	63.6
YW	100.2
MCE	10.1
MILK	17.5
MWW	49.3

CE	BW	WW	YW	ADG	MCE	MILK	MWW	STAY	DOC	CW	YG	MARB	BF	REA	API	TI
13.4	0.4	70.6	108.5	0.24	8.8	22.3	57.6	12.9	10.7	35.0	-0.07	0.40	0.005	0.56	139.4	76.5

- Dam's a young United cow with great numbers
- Ranks in top 4% for weaning wt, 1% ADG and had an actual weight of 1575 on 10/25/17
- Ultrasound safe to AI date with an early March heifer calf
- AI'd on 5/24 to Nightride, PE to Constitution 6/26-7/12/2017



LOT 78

79**RFS MISS DYNA D153****RYDEEN FARMS**

Homo Black | Homo Polled | 1/2 SM 1/2 AN | Cow

BD: 3/28/16 | Tattoo: D153 | ASA#: 3178625 | Adj. BW: 97 | Adj. WW: 750

CONNELLY CHECKMARK

SIRE HART CHECKMARK 4117

HART MISTI 7017

LCHMN BRIGHT LIGHT L122L

DAM B53

Z174

PROJECTED EPDS

CE	17.9
BW	-1.7
WW	63.7
YW	105.2
MCE	11.1
MILK	23.4
MWW	55.2

CE	BW	WW	YW	ADG	MCE	MILK	MWW	STAY	DOC	CW	YG	MARB	BF	REA	API	TI
13.0	1.4	70.8	118.6	0.30	10.7	34.0	69.4	10.9	11.5	43.0	-0.10	0.66	-0.003	0.69	149.4	83.8

- Really like this "brood cow special", top 15% MCE, top 1% milk and MWW
- Dam's a 5.5 frame cow with an actual weight of 1400 on 10/25/17
- Ultrasound predicts April 3 due date—likely AI calf
- AI'd on 5/24, and 6/17 to Nightride, PE to Constitution 6/26-7/12/2017



LOT 79

80**RFS MISS DIOR D139****RYDEEN FARMS**

Homo Black | Homo Polled | 3/4 SM 1/4 AN | Cow

BD: 3/22/16 | Tattoo: D139 | ASA#: 3178611 | Adj. BW: 83 | Adj. WW: 672

B/R NEW FRONTIER 095

SIRE GLS COMBINATION R2

GLS HOSTESS H16

ELLINGSON RIGHT ON W944

DAM Z174

RFS MISS T86

PROJECTED EPDS

CE	15.9
BW	-1.5
WW	57.0
YW	94.9
MCE	9.9
MILK	20.6
MWW	49.1

CE	BW	WW	YW	ADG	MCE	MILK	MWW	STAY	DOC	CW	YG	MARB	BF	REA	API	TI
9.0	1.8	57.4	98.0	0.25	8.4	28.5	57.2	11.3	11.6	31.7	-0.29	0.34	-0.032	0.92	122.8	67.1

- Dam ratios 104/4 birth wt., ranks in the top 1% for milk
- Ultrasound predicts March 31 due date—likely AI calf
- AI'd on 5/24, and 6/16 to Nightride, PE to Constitution 6/26-7/12/2017



LOT 80

BRED HEIFERS



LOT 81



LOT 82



LOT 83



LOT 84

81

RFS MISS DEMI D106

RYDEEN FARMS

Homo Black | Homo Polled | 1/2 SM 1/2 AN | Cow

BD: 3/17/16 | Tattoo: D106 | ASA#: 3178577 | Adj. BW: 95 | Adj. WW: 777

SIRE MYTTY IN FOCUS
CONNEALY IN SURE 8524
 ENTREENA OF CONANGA 657
 MR NLC UPGRADE U8676

DAM B137
 RF SIGRID S25

PROJECTED EPDS	
CE	13.9
BW	-1.0
NM	75.8
YM	125.6
MCE	9.3
MILK	22.7
MWM	60.6

CE	BW	WW	YW	ADG	MCE	MILK	MWM	STAY	DOC	CM	YG	MARB	BF	REA	API	TI
17.2	-1.6	76.9	123.9	0.29	9.9	29.5	68.0	11.4	12.3	41.3	-0.20	0.74	-0.017	0.88	168.7	93.7

- She's a tank that shouldn't leave the farm
- Maybe the best genetic potential of anything we offer
- Ultrasound safe to AI date with an early March heifer calf
- AI'd on 5/25 to Constitution, PE to Constitution 6/26-7/12/2017

82

RFS MISS DIXIE D108

RYDEEN FARMS

Homo Black | Homo Polled | PB SM | Cow

BD: 3/17/16 | Tattoo: D108 | ASA#: 3178580 | Adj. BW: 90 | Adj. WW: 676

SIRE TJ 57J THE GAMBLER
DIKEMANS SURE BET
 MEGAN 9M
 GFI RAMBLER J114

DAM COTT-GFI KELSIE 373N
 MISS ARNOLD K2312

PROJECTED EPDS	
CE	17.8
BW	-1.5
NM	69.4
YM	116.4
MCE	10.7
MILK	24.6
MWM	59.3

CE	BW	WW	YW	ADG	MCE	MILK	MWM	STAY	DOC	CM	YG	MARB	BF	REA	API	TI
11.1	1.5	63.1	92.5	0.18	11.1	22.9	54.5	14.7	11.6	27.1	-0.34	0.32	-0.052	0.88	141.9	74.7

- Long, black female that ranks in top 15% API
- Dam weaned 16 natural calves and has several daughters in the herd
- Ultrasound predicts March 29 due date—likely AI calf
- AI'd on 5/24 to Nightride, 6/12 to Confidence Plus, PE to Constitution 6/26-7/12/2017

83

RFS MISS DOLLIE D130

RYDEEN FARMS

Homo Black | Homo Polled | PB SM | Cow

BD: 3/20/16 | Tattoo: D130 | ASA#: 3178602 | Adj. BW: 89 | Adj. WW: 650

SIRE MR NLC UPGRADE U8676
MCM TOP GRADE 018X
 MCM 513R
 ELLINGSON RIGHT ON W944

DAM RFS MISS Z143
 RF SAVANNA S113

PROJECTED EPDS	
CE	10.2
BW	-0.1
NM	68.1
YM	115.3
MCE	8.9
MILK	23.8
MWM	57.9

CE	BW	WW	YW	ADG	MCE	MILK	MWM	STAY	DOC	CM	YG	MARB	BF	REA	API	TI
9.8	0.3	61.6	103.4	0.26	9.0	31.7	62.5	12.8	10.3	32.4	-0.28	0.41	-0.068	0.61	144.6	78.5

- Ranks in top 10% of breed for API and TI
- Dam ratios 108/4 weaning wt. has a powerful son, RFS Elegance E103 in the sale
- Ultrasound predicts mid-May heifer calf
- AI'd on 5/24 to Nightride, PE to Constitution 6/26-7/12/2017, PE to ES D-Luxe 7/12-9/1/2017

84

RFS MISS DAFFODIL D157

RYDEEN FARMS

Homo Black | Homo Polled | PB SM | Cow

BD: 3/29/16 | Tattoo: D157 | ASA#: 3178629 | Adj. BW: 89 | Adj. WW: 732

SIRE KS BLACK DIAMOND W992
KBHR Y068 HARLEY
 OLF LADY TRIATHLON S587
 HOOKS SHEAR FORCE 38K

DAM W3
 RFS MISS T12

PROJECTED EPDS	
CE	10.9
BW	1.2
NM	76.4
YM	122.5
MCE	7.0
MILK	18.0
MWM	56.2

CE	BW	WW	YW	ADG	MCE	MILK	MWM	STAY	DOC	CM	YG	MARB	BF	REA	API	TI
11.2	2.8	78.1	117.8	0.25	5.2	20.0	59.1	14.4	13.8	43.9	-0.26	-0.01	-0.033	0.96	126.9	73.4

- As pretty as her picture and ranked in the top 4% for weaning and yearling wts.
- Dam's a moderate cow who has weaned 8 calves here and weighed 1400 on 10/25/17
- Ultrasound predicts April 20 due date
- AI'd to 5/24 to Nightride, PE to Constitution 6/26-7/12/2017, PE to ES D-Luxe 7/12-9/1/2017

85**RFS MISS DUBAI D21****RYDEEN FARMS****Homo Black | Homo Polled | 3/8 SM 5/8 AN | Cow**

BD: 3/1/16 | Tattoo: D21 | ASA#: 3178492 | Adj. BW: 94 | Adj. WW: 593

MYTTY IN FOCUS

SIRE CONNEALY IN SURE 8524

ENTREENA OF CONANGA 657

TNT PUNCH Y260

DAM B93

W91

PROJECTED EPDS

CE	20.7
BW	-3.6
MW	52.6
YW	87.2
MCE	11.9
MILK	22.4
MMW	48.7

CE	BW	MW	YW	ADD	MCE	MILK	MMW	STAY	DOC	CW	YG	MARB	BF	REA	API	TI
18.6	-2.4	48.6	82.5	0.21	12.3	32.0	56.3	14.6	13.7	16.3	-0.26	0.71	-0.021	0.71	158.9	74.5

- Top 10% calving ease and birth wt., top 1% milk and top 5% marbling
- Dam's a young Punch cow with an actual weight of 1340 on 10/25/17
- Ultrasound safe to AI date with and early March heifer calf
- AI'd on 5/24 to Nightride, PE to Constitution 6/26-7/12/2017

**LOT 85****86****RFS MISS DALLAS D15****RYDEEN FARMS****Hetero Black | Homo Polled | 1/2 SM 1/2 AN | Cow**

BD: 2/28/16 | Tattoo: D15 | ASA#: 3178486 | Adj. BW: 96 | Adj. WW: 703

CONNEALY WRANGLER

SIRE CONNEALY IRISH 0204

BLACK CREST OF CONANGA 5640

HSF HIGH ROLLER 127

DAM AFC BERNADETTE B28

AFC XIPIL X35

PROJECTED EPDS

CE	13.8
BW	-0.9
MW	69.5
YW	117.5
MCE	10.8
MILK	22.0
MMW	56.7

CE	BW	MW	YW	ADD	MCE	MILK	MMW	STAY	DOC	CW	YG	MARB	BF	REA	API	TI
17.1	-1.4	64.4	107.8	0.27	12.9	28.0	60.2	7.3	13.5	32.4	-0.26	0.45	-0.041	0.78	139.8	79.0

- Wonderful SimAngus with great maternal numbers
- Dam was purchased from Anderson Farms as an open
- Ultrasound predicts April 6 due date
- AI'd on 6/7 to Nightride, 6/25 to Constitution, PE to Constitution 6/26-7/12/2017

**LOT 86****87****RFS MISS DIANA D79****RYDEEN FARMS****Homo Black | Homo Polled | PB SM | Cow**

BD: 3/14/16 | Tattoo: D79 | ASA#: 3178550 | Adj. BW: 85 | Adj. WW: 579

MR NLC UPGRADE U8676

SIRE MCM TOP GRADE 018X

MCM 513R

HTP SVF IN DEW TIME

DAM Y62

U65

PROJECTED EPDS

CE	11.9
BW	-0.9
MW	63.1
YW	104.2
MCE	9.0
MILK	21.3
MMW	52.8

CE	BW	MW	YW	ADD	MCE	MILK	MMW	STAY	DOC	CW	YG	MARB	BF	REA	API	TI
13.2	-1.4	51.5	81.1	0.18	9.3	26.7	52.4	10.6	11.4	16.5	-0.31	0.47	-0.040	0.72	146.2	75.9

- Super PB ranks top 4% birth wt., top 3% marbling, top 10% API, top 15% TI
- Dam's a calving ease, moderate gal that weighed 1430 on 10/25/17
- Ultrasound predicts April 10 due date
- AI'd on 5/24 to Constitution, 6/11 to Nightride, PE to Constitution 6/26-7/12/2017

**LOT 87****88****RFS MISS DAHLIA D136****RYDEEN FARMS****Homo Black | Homo Polled | 3/4 SM 1/4 AN | Cow**

BD: 3/22/16 | Tattoo: D136 | ASA#: 3178608 | Adj. BW: 84 | Adj. WW: 645

S CHISUM 6175

SIRE KNH SECURITY 258A

KNH MISS 58S

GFI RAMBLER J114

DAM RF SESAME S164

RF MISS N17

PROJECTED EPDS

CE	11.1
BW	0.2
MW	69.0
YW	113.4
MCE	9.3
MILK	19.3
MMW	53.8

CE	BW	MW	YW	ADD	MCE	MILK	MMW	STAY	DOC	CW	YG	MARB	BF	REA	API	TI
11.7	0.8	63.4	99.6	0.23	9.8	22.7	54.4	10.6	11.5	30.6	-0.15	0.13	-0.032	0.47	115.0	65.2

- Very nice 3/4 blood SimAngus
- Dam's weaned 11 in a 366 day interval
- Ultrasound predicts June 1 due date
- AI'd on 5/27 to Constitution, 6/22 to Nightride, PE to Constitution 6/26-7/12/2017, PE to ES D-Luxe 7/12-9/1/17

**LOT 88****BRED HEIFERS**

89 | RFS MISS DESTINEE D138

RYDEEN FARMS Homo Black | Homo Polled | 3/4 SM 1/4 AN | Cow
BD: 3/22/16 | Tattoo: D138 | ASA#: 3178610 | Adj. BW: 90 | Adj. WW: 637

SIRE GW PREMIUM BEEF 021TS
GW ROBUST 605Z
GW MISS GPRD 123X
ELLINGSON LEGACY M229

DAM Y97
U33

PROJECTED EPDS	
CE	18.8
BM	-0.2
NW	62.3
YM	96.0
MCE	7.2
MILK	18.9
MWM	50.0

CE	BW	NW	YM	ADG	MCE	MILK	MWM	STAY	DOC	CW	YG	MARB	BF	REA	API	TI
14.7	0.9	68.0	100.2	0.20	2.9	25.0	59.0	13.0	14.7	30.7	-0.39	0.35	-0.048	1.11	147.7	79.8

- Great phenotype, top 20% API and TI
- Dam's a 7 year old in top 3% CE and weighed 1290 on 10/25/17
- Ultrasound safe to AI date with an early March heifer calf
- AI'd on 5/25 to Nightride, PE to Constitution 6/26-7/12/2017

90 | RFS MISS DIVINE D167

RYDEEN FARMS Homo Black | Homo Polled | 3/4 SM 1/4 AN | Cow
BD: 4/1/16 | Tattoo: D167 | ASA#: 3178639 | Adj. BW: 91 | Adj. WW: 576

SIRE S CHISUM 617S
KNH SECURITY 258A
KNH MISS 58S
HC POWER DRIVE 88H

DAM RCP ROSLYN T729
RCP ROSLYN N355

PROJECTED EPDS	
CE	10.8
BM	0.3
NW	63.9
YM	107.0
MCE	9.9
MILK	17.5
MWM	49.5

CE	BW	NW	YM	ADG	MCE	MILK	MWM	STAY	DOC	CW	YG	MARB	BF	REA	API	TI
11.1	0.9	53.2	86.7	0.21	11.1	19.1	45.7	10.1	12.6	23.5	-0.20	0.10	-0.048	0.41	108.0	58.2

- Hard working dam has weaned 9 calves at Rydeen Farms
- Ultrasound predicts April 12 due date
- AI'd on 5/24 and 6/13 to Nightride, PE to Constitution 6/26-7/12/2017

91 | RFS MISS DISCOVER D193

RYDEEN FARMS Homo Black | Homo Polled | 3/4 SM 1/4 AN | Cow
BD: 4/13/16 | Tattoo: D193 | ASA#: 3178663 | Adj. BW: 92 | Adj. WW: 621

SIRE HTP SVF IN DEW TIME
RF DEWPOINT W78
RF MISS N97
W R BAR IN FOCUS 730

DAM W185
RFS MISS T75

PROJECTED EPDS	
CE	11.5
BM	0.5
NW	72.3
YM	112.9
MCE	9.1
MILK	15.8
MWM	51.9

CE	BW	NW	YM	ADG	MCE	MILK	MWM	STAY	DOC	CW	YG	MARB	BF	REA	API	TI
12.4	1.4	69.9	98.5	0.18	9.4	15.7	50.6	13.9	11.8	30.1	-0.22	0.13	-0.040	0.63	122.3	67.5

- Dam's weaned 7 calves including other Vision Sale favorites.
- Ultrasound predicts April 20 due date
- AI'd on 5/24 to Nightride, PE to Constitution 6/26-7/12/2017, PE to ES D-Luxe 7/12-9/1/2017

92 | RFS MISS DRESDEN D49

RYDEEN FARMS Homo Black | Homo Polled | PB SM | Cow
BD: 3/10/16 | Tattoo: D49 | ASA#: 3178520 | Adj. BW: 94 | Adj. WW: 681

SIRE MR NLC UPGRADE U8676
MCM TOP GRADE 018X
MCM 513R
RF DEWPOINT W78

DAM RFS MISS AFFIRM A180
RF SONDR A38

PROJECTED EPDS	
CE	9.8
BM	0.5
NW	73.7
YM	117.0
MCE	9.2
MILK	19.7
MWM	56.6

CE	BW	NW	YM	ADG	MCE	MILK	MWM	STAY	DOC	CW	YG	MARB	BF	REA	API	TI
9.0	1.4	72.8	106.7	0.21	9.7	23.5	59.9	12.4	10.4	35.1	-0.35	0.30	-0.062	0.92	137.6	79.9

- Top 15% of breed for weaning and yearling numbers
- Top 20% API and 10% TI
- Ultrasound predicts April 20 due date
- AI'd on 5/24 to Confidence Plus, Nightride on 6/15, PE to Constitution 6/26-7/12/2017, PE to ES D-Luxe 7/12-9/1/2017



93**RFS MISS DOLL D179****RYDEEN FARMS**

Homo Black | Homo Polled | 1/2 SM 1/2 AN | Cow

BD: 4/5/16 | Tattoo: D179 | ASA#: 3191370 | Adj. BW: 87 | Adj. WW: 669

CONNEALY CHECKMARK

SIRE HART CHECKMARK 4117

HART MISTI 7017

HTP SVF IN DEW TIME

DAM B58

RF NEVA

PROJECTED EPDS

CE	17.6
BW	-1.6
WW	65.6
YW	103.1
MCE	10.7
MILK	17.0
MWW	49.7

CE	BW	WW	YW	ADD	MCE	MILK	MWW	STAY	DOC	CW	YG	MARB	BF	REA	API	TI
12.3	1.6	74.6	114.4	0.25	9.9	21.2	58.4	8.2	10.6	40.2	-0.12	0.58	-0.018	0.63	137.7	81.7

- Great SimAngus female, top 15% of breed for weaning and marbling
- Dam is a young In Dew Time cow with an actual weight of 1355 on 10/25/17
- Ultrasound safe to AI date with an early March bull calf
- AI'd on 5/24 to Nightride, PE to Constitution 6/26-7/12/2017



LOT 93

94**RFS MISS DENVER D19****RYDEEN FARMS**

Homo Black | Homo Polled | 1/2 SM 1/2 AN | Cow

BD: 2/29/16 | Tattoo: D19 | ASA#: 3178490 | Adj. BW: 91 | Adj. WW: 657

CONNEALY WRANGLER

SIRE CONNEALY IRISH 0204

BLACK CREST OF CONANGA 5640

KBHR Y068 HARLEY

DAM B52

U167

PROJECTED EPDS

CE	18.2
BW	-2.4
WW	61.5
YW	102.3
MCE	11.3
MILK	17.3
MWW	48.1

CE	BW	WW	YW	ADD	MCE	MILK	MWW	STAY	DOC	CW	YG	MARB	BF	REA	API	TI
13.5	0.0	66.4	112.8	0.29	11.2	21.9	55.1	7.2	12.2	37.5	-0.22	0.43	-0.020	0.88	132.3	77.0

- Long bodied SimAngus gal
- Dam is an exceptional Harley that ratios over 100 in all 7 categories
- Ultrasound predicts March 24 due date—likely AI calf
- AI'd on 5/24 and 6/16 to Nightride, PE to Constitution 6/26-7/12/2017



LOT 94

95**RFS MISS DUBLIN D41****RYDEEN FARMS**

Homo Black | Homo Polled | 5/8 SM 1/4 AN 1/8 CS | Cow

BD: 3/9/16 | Tattoo: D41 | ASA#: 3178512 | Adj. BW: 92 | Adj. WW: 670

TNT TANKER U263

SIRE TNT PUNCH Y260

TNT MISS T34

TNT TANKER U263

DAM RFS MISS Z25

W10

PROJECTED EPDS

CE	15.0
BW	-1.4
WW	64.2
YW	104.6
MCE	11.6
MILK	19.2
MWW	51.3

CE	BW	WW	YW	ADD	MCE	MILK	MWW	STAY	DOC	CW	YG	MARB	BF	REA	API	TI
7.2	2.1	71.8	117.4	0.29	11.7	25.7	61.6	14.8	15.4	43.2	-0.16	0.21	-0.036	0.64	124.0	70.7

- Wonderful SimAngus with excellent maternal traits
- Top 10% of breed for MCE, top 20% milk, top 10% for MWW
- Ultrasound predicts a May 7 bull calf
- AI'd on 5/24 to Nightride, 6/24 to Constitution, PE to Constitution 6/26-7/12/2017, PE to ES D-Luxe 7/12-9/1/2017



LOT 95

96**RFS MISS DETROIT D9****RYDEEN FARMS**

Homo Black | Homo Polled | 3/8 SM 5/8 AN | Cow

BD: 2/25/16 | Tattoo: D9 | ASA#: 3178480 | Adj. BW: 88 | Adj. WW: 711

G A R GRID MAKER

SIRE S A V BISMARCK 5682

S A V ABIGALE 0451

TNT DUAL FOCUS T249

DAM B30

RFS MISS Z9

PROJECTED EPDS

CE	14.3
BW	-0.4
WW	73.9
YW	121.2
MCE	8.9
MILK	18.1
MWW	55.0

CE	BW	WW	YW	ADD	MCE	MILK	MWW	STAY	DOC	CW	YG	MARB	BF	REA	API	TI
18.1	-0.3	73.2	115.1	0.26	9.0	20.2	56.8	10.9	12.1	38.0	-0.01	0.33	0.022	0.56	133.3	74.5

- Top 10% of breed for CE
- Dam is a great Dual Focus with an actual weight 1380 on 10/25/17
- Ultrasound predicts March 29 due date
- AI'd on 5/24 and 6/14 to Nightride, PE to Constitution 6/26-7/12/2017



LOT 96

BRED HEIFERS

97**RFS MISS DISPLAY D184****RYDEEN FARMS****Hetero Black | Homo Polled | PB SM | Cow**

BD: 4/8/16 | Tattoo: D184 | ASA#: 3178655 | Adj. BW: 88 | Adj. WW: 682

HTP SVF IN DEW TIME

SIRE RF DEWPOINT W78

RF MISS N97

ELLINGSON RIGHT ON W944

DAM RFS MISS Z72

RF PINA COLADA

PROJECTED EPDS

CE	16.9
BW	-1.6
NW	65.0
YM	98.3
MCE	11.4
MILK	16.6
MWW	49.1

CE	BW	NW	YM	ADG	MCE	MILK	MWW	STAY	DOC	CM	YG	MARB	BF	REA	API	TI
11.0	1.7	73.5	104.7	0.20	11.3	20.4	57.1	16.6	10.8	34.3	-0.28	0.06	-0.060	0.71	133.7	73.2

- Top 15% of breed for weaning wt., top 10% for ADG
- Dam has excellent maternal numbers
- Ultrasound safe to AI date with an early March heifer calf
- AI'd on 5/24 to Nightride, PE to Constitution 6/26-7/12/2017

98**RFS MISS DIVA D143****RYDEEN FARMS****Homo Black | Homo Polled | PB SM | Cow**

BD: 3/24/16 | Tattoo: D143 | ASA#: 3178615 | Adj. BW: 104 | Adj. WW: 669

TJ 57J THE GAMBLER

SIRE DIKEMANS SURE BET

MEGAN 9M

GFI RAMBLER J114

DAM RF RACHELLE

RFS MARILEE M22

PROJECTED EPDS

CE	16.7
BW	-2.0
NW	58.4
YM	94.7
MCE	10.7
MILK	17.2
MWW	46.5

CE	BW	NW	YM	ADG	MCE	MILK	MWW	STAY	DOC	CM	YG	MARB	BF	REA	API	TI
10.5	0.8	60.3	97.5	0.23	9.9	21.7	51.9	13.9	12.0	29.6	-0.32	0.31	-0.048	0.88	140.7	73.8

- Top 10% of breed for ADG, top 15% API
- Dam raised 11 natural calves in a 368 day interval with a weaning wt. ratio of 103/11 calves.
- Ultrasound predicts March 24 due date—likely AI calf
- AI'd on 5/24 and 6/13 to Nightride, PE to Constitution 6/26-7/12/2017

99**RFS MISS DORY D127****RYDEEN FARMS****Homo Black | Homo Polled | PB SM | Cow**

BD: 3/20/16 | Tattoo: D127 | ASA#: 3178599 | Adj. BW: 85 | Adj. WW: 656

MR NLC UPGRADE U8676

SIRE MCM TOP GRADE 018X

MCM 513R

CNS DREAM ON L186

DAM U33

RFS FLOM H69

PROJECTED EPDS

CE	11.5
BW	-0.3
NW	67.2
YM	109.2
MCE	9.1
MILK	22.1
MWW	55.7

CE	BW	NW	YM	ADG	MCE	MILK	MWW	STAY	DOC	CM	YG	MARB	BF	REA	API	TI
12.4	-0.1	59.8	91.2	0.20	9.4	28.2	58.1	12.0	9.8	24.2	-0.37	0.40	-0.067	0.81	144.4	77.5

- Top 10% of breed for marbling, milk, ADG, API, TI
- Ultrasound predicts June 16 due date
- AI'd on 5/24 to Nightride, on 6/18 to Confidence Plus, PE to Constitution 6/26-7/12/2017, PE to ES D-Luxe 7/12-9/1/2017

100**RFS MISS DENMARK D4****RYDEEN FARMS****Homo Black | Homo Polled | 1/2 SM 1/2 AN | Cow**

BD: 2/22/16 | Tattoo: D4 | ASA#: 3178475 | Adj. BW: 94 | Adj. WW: 607

CONNEALY WRANGLER

SIRE CONNEALY IRISH 0204

BLACK CREST OF CONANGA 5640

TNT TANKER U263

DAM B105

RF SAPPHIRE S96

PROJECTED EPDS

CE	11.8
BW	-0.5
NW	67.8
YM	116.6
MCE	12.4
MILK	20.6
MWW	54.5

CE	BW	NW	YM	ADG	MCE	MILK	MWW	STAY	DOC	CM	YG	MARB	BF	REA	API	TI
13.0	-0.6	60.9	106.0	0.28	16.0	25.3	55.7	8.5	11.7	32.8	-0.31	0.45	-0.041	0.92	134.7	75.4

- Super Connealy Irish SimAngus female
- Solid black beauty
- Ultrasound predicts May 7 due date
- AI'd on 5/24 and 6/13 to Nightride, PE to Constitution 6/26-7/2017, PE to ES D-Luxe 7/12-9/1/2017



LOT 98



LOT 99



LOT 100

101

RFS MISS DISH D99

RYDEEN FARMS

Red | Homo Polled | PB SM | Cow

BD: 3/16/16 | Tattoo: D99 | ASA#: 3178570 | Adj. BW: 89 | Adj. WW: 677

GW REDESTINED 642X

SIRE RFS BULLETPROOF B42

RFS MISS Z119

TRAXS RUSHMORE X103

DAM Z34

RF RAINBOW

PROJECTED EPDS

CE	13.6
BW	-0.2
WW	79.7
YW	119.4
MCE	13.7
MILK	19.4
MMW	59.2

CE	BW	WW	YW	ADD	MCE	MILK	MMW	STAY	DOC	CW	YG	MARB	BF	REA	API	TI
11.3	1.3	73.3	111.6	0.24	10.8	15.7	52.3	15.1	13.0	38.0	-0.33	0.39	-0.056	0.95	151.7	82.2

- High powered RFS Bulletproof female
- Top 4% of breed for API, top 3% of breed for TI
- Ultrasound safe to AI date with an early March heifer calf
- AI'd on 5/24 to All Aboard, PE to D-Luxe 6/26-7/12/2017



LOT 101

102

RFS MISS DAMSEL D177

RYDEEN FARMS

Red | Homo Polled | PB SM | Cow

BD: 4/4/16 | Tattoo: D177 | ASA#: 3178649 | Adj. BW: 83 | Adj. WW: 645

R PLUS HARD ROCK 145X

SIRE ELLINGSON COMPLETE A358

ELLINGSON MS AMIGO XS

THSR BOMBARDIER U802

DAM RFS MISS Z120

UB

PROJECTED EPDS

CE	13.4
BW	0.2
WW	78.3
YW	113.9
MCE	15.1
MILK	18.3
MMW	57.4

CE	BW	WW	YW	ADD	MCE	MILK	MMW	STAY	DOC	CW	YG	MARB	BF	REA	API	TI
11.0	2.0	70.6	100.7	0.19	13.5	13.4	48.7	12.2	10.7	32.4	-0.26	-0.01	-0.051	0.68	118.9	68.4

- Top 20% of breed for weaning wt.
- Balanced EPDs in a high capacity female
- Ultrasound safe to AI date with an early March heifer calf
- AI'd on 5/24 to All Aboard, PE to D-Luxe 6/26-7/12/2017



LOT 102

103

RFS MISS DEWY D170

RYDEEN FARMS

Red | Homo Polled | PB SM | Cow

BD: 4/1/16 | Tattoo: D170 | ASA#: 3178642 | Adj. BW: 90 | Adj. WW: 642

R PLUS HARD ROCK 145X

SIRE ELLINGSON COMPLETE A358

ELLINGSON MS AMIGO XS

RFS T46

DAM RFS MISS ACORN A184

U206

PROJECTED EPDS

CE	12.0
BW	1.0
WW	78.6
YW	114.4
MCE	15.3
MILK	16.8
MMW	56.1

CE	BW	WW	YW	ADD	MCE	MILK	MMW	STAY	DOC	CW	YG	MARB	BF	REA	API	TI
8.1	3.5	71.2	101.6	0.19	13.9	10.4	46.0	10.9	10.6	35.1	-0.34	-0.02	-0.081	0.74	110.5	66.6

- Nice EPD's in a beautiful package
- Her heifer calf will stand out
- Ultrasound safe to AI date with early March heifer calf
- AI'd on 5/24 to All Aboard, PE to D-Luxe 6/26-7/12/2017



LOT 103

104

RFS MISS DARLING D147

RYDEEN FARMS

Red | Homo Polled | PB SM | Cow

BD: 3/25/16 | Tattoo: D147 | ASA#: 3178619 | Adj. BW: 94 | Adj. WW: 634

HSF HIGH ROLLER 12T

SIRE WS HIGH STAKES W115

WS MISS DOLLY T10

GW REDESTINED 642X

DAM B26

RFS MISS Z30

PROJECTED EPDS

CE	15.9
BW	-1.0
WW	72.6
YW	115.9
MCE	9.3
MILK	20.3
MMW	56.6

CE	BW	WW	YW	ADD	MCE	MILK	MMW	STAY	DOC	CW	YG	MARB	BF	REA	API	TI
16.4	-1.3	57.1	89.1	0.20	15.8	27.8	56.4	14.1	12.7	21.3	-0.41	0.27	-0.079	0.80	148.5	74.9

- Top 2% of breed for CE, top 5% of breed for birth wt and API
- Dam is a young Redestined cow with an actual weight of 1305 on 10/25/17
- Ultrasound predicts March 24 due date
- AI'd on 6/7 to All Aboard, PE to D-Luxe 6/26-7/12/2017



LOT 104

BRED HEIFERS

105 | RFS MISS DYNAMIC D46

RYDEEN FARMS

Red | Homo Polled | PB SM | Cow

BD: 3/9/16 | Tattoo: D46 | ASA#: 3178517 | Adj. BW: 99 | Adj. WW: 644

SIRE HSF HIGH ROLLER 12T
WS HIGH STAKES W115
 WS MISS DOLLY T10
 CDI AUTHORITY 77X

DAM **B85**
 RFS MISS T160

PROJECTED EPDS	
CE	15.8
BW	-0.9
NW	71.5
YM	107.6
MCE	15.1
MILK	26.9
MWM	62.6

CE	BW	NW	YM	ADG	MCE	MILK	MWM	STAY	DOC	CW	YG	MARB	BF	REA	API	TI
15.7	-0.2	56.9	88.1	0.19	13.6	30.7	59.1	13.2	11.8	22.3	-0.39	0.01	-0.053	0.96	129.4	67.1

- Top 10% of breed for MCE, top 3% for milk, top 15% for MWM
- Dam is an Authority with an actual weight of 1450 on 10/25/17
- Ultrasound predicts March 24 due date—likely AI calf
- AI'd on 5/24 to Nightride, 6/14 to All Aboard, PE to D-Luxe 6/26-7/12/2017

106 | RFS MISS DAIQUIRI D173

RYDEEN FARMS

Red | Hetero Polled | PB SM | Cow

BD: 4/2/16 | Tattoo: D173 | ASA#: 3178645 | Adj. BW: 90 | Adj. WW: 656

SIRE R PLUS HARD ROCK 145X
ELLINGSON COMPLETE A358
 ELLINGSON MS AMIGO X5
 BBS PHALTLINE P5

DAM **W200**
 RS REBA R72

PROJECTED EPDS	
CE	12.7
BW	1.2
NW	80.8
YM	122.6
MCE	7.8
MILK	12.9
MWM	53.3

CE	BW	NW	YM	ADG	MCE	MILK	MWM	STAY	DOC	CW	YG	MARB	BF	REA	API	TI
10.0	3.0	73.4	102.5	0.18	12.8	13.1	49.8	11.1	10.1	34.8	-0.32	-0.01	-0.054	0.88	114.7	68.9

- Performance pedigree
- Ranks in top 15% of breed for weaning wt, top 10% for MCE
- Ultrasound predicts early April due date
- AI'd on 5/24 to All Aboard, PE to D-Luxe 6/26-7/12/2017, PE to ES D-Luxe 7/12-9/1/2017

107 | RFS MISS DESIGNER D26

RYDEEN FARMS

Red | Hetero Polled | PB SM | Cow

BD: 3/3/16 | Tattoo: D26 | ASA#: 3178497 | Adj. BW: 92 | Adj. WW: 687

SIRE GW REDESTINED 642X
RFS BULLETPROOF B42
 RFS MISS Z119
 TNT AXIS X307

DAM **LRS MS AXIS 246Z**
 LRS MS PREF. BEEF 346N

PROJECTED EPDS	
CE	11.5
BW	1.4
NW	81.9
YM	127.6
MCE	6.7
MILK	16.1
MWM	57.1

CE	BW	NW	YM	ADG	MCE	MILK	MWM	STAY	DOC	CW	YG	MARB	BF	REA	API	TI
7.6	3.5	75.7	112.4	0.23	10.6	19.5	57.4	17.0	11.6	41.6	-0.29	0.35	-0.044	0.94	145.0	79.5

- Top 10% of breed for weaning wt, yearling wt, API and TI
- Dam is an excellent Axis cow from Lassie's
- Ultrasound predicts heifer calf due May 12
- AI'd on 5/24 to All Aboard, 6/16 to High Stakes, PE to D-Luxe 6/26-7/12/2017, PE to ES D-Luxe 7/12-9/1/2017

108 | RFS MISS DISNEY D178

RYDEEN FARMS

Red | Homo Polled | 3/4 SM 1/4 AN | Cow

BD: 4/4/16 | Tattoo: D178 | ASA#: 3178650 | Adj. BW: 88 | Adj. WW: 659

SIRE R PLUS HARD ROCK 145X
ELLINGSON COMPLETE A358
 ELLINGSON MS AMIGO X5
 HART FINAL ANSWER 0048

DAM **RFS MISS ALUMNI A78**
 Y109

PROJECTED EPDS	
CE	13.6
BW	0.6
NW	81.2
YM	123.0
MCE	9.1
MILK	11.9
MWM	52.5

CE	BW	NW	YM	ADG	MCE	MILK	MWM	STAY	DOC	CW	YG	MARB	BF	REA	API	TI
11.8	1.8	74.3	103.3	0.18	15.3	11.1	48.2	10.4	11.6	33.3	-0.32	0.09	-0.068	0.76	114.1	68.7

- Attractive phenotype
- Top 1% of breed for MCE
- Ultrasound predicts April 5 due date
- AI'd on 6/7 to BigTime, PE to D-Luxe 6/26-7/12/2017



LOT 105



LOT 106



LOT 107



LOT 108

BRED HEIFERS

109

RFS MISS ELISE E59

RYDEEN FARMS

Black | Polled | 5/8 SM 1/4 AN 1/8 CS | Open Heifer

BD: 3/10/17 | Tattoo: E59 | ASA#: 3309870 | Adj. BW: 85 | Adj. WW: 672 | Adj. YW: 928

J BAR J NIGHTRIDE 225Z

SIRE CLRS CONSTITUTION 311 C

CLRS AID XCELLENCE 311 A

KBHR Y068 HARLEY

DAM B205

W21

CE	BW	KW	YW	ADG	MCE	MILK	MWV	STAY	DOC	CW	YG	MARB	BF	REA	API	TI
10.5	1.0	75.7	119.3	0.27	6.0	18.9	56.8	11.6	13.3	42.4	-0.22	0.43	-0.040	0.79	147.3	84.9

- Stunning Constitution female
- First offering of these elite females
- Ranks in top 20% of breed for API, 10% for TI



LOT 109

110

RFS MISS ELIN E30

RYDEEN FARMS

Black | Polled | PB SM | Open Heifer

BD: 3/7/17 | Tattoo: E30 | ASA#: 3309841 | Adj. BW: 92 | Adj. WW: 726 | Adj. YW: 868

BDV TRUE GRIT 11X

SIRE BBS TRUE JUSTICE B10

BBS MISS JUSTICE Z7

W/C UNITED 956Y

DAM B39

U184

CE	BW	KW	YW	ADG	MCE	MILK	MWV	STAY	DOC	CW	YG	MARB	BF	REA	API	TI
15.4	0.1	64.1	98.5	0.22	10.8	27.2	59.2	13.1	9.9	28.7	-0.38	0.18	-0.063	0.93	140.8	75.0

- Purebred, feminine fronted female
- Ranks in top 4% of breed for CE, top 15% for API
- Dam is beautiful United female



LOT 110

111

RFS MISS ELSA E23

RYDEEN FARMS

Black | Polled | 5/8 SM 3/8 AN | Open Heifer

BD: 3/5/17 | Tattoo: E23 | ASA#: 3309833 | Adj. BW: 88 | Adj. WW: 668 | Adj. YW: 940

J BAR J NIGHTRIDE 225Z

SIRE CLRS CONSTITUTION 311 C

CLRS AID XCELLENCE 311 A

TNT DUAL FOCUS T249

DAM B66

W3

CE	BW	KW	YW	ADG	MCE	MILK	MWV	STAY	DOC	CW	YG	MARB	BF	REA	API	TI
14.0	-0.7	68.1	108.9	0.26	9.2	19.0	53.1	12.3	13.4	33.8	-0.08	0.84	0.006	0.57	165.5	87.7

- This gal has it all—phenotype and numbers
- Ranks in top 2% of breed for marbling, 5% for API and 4% for TI
- Dam is a wonderful Dual Focus with an actual weight of 1480 on 10/25/17



LOT 111

OPEN HEIFERS



112 | RFS MISS ETOLE E63

RYDEEN FARMS | Black | Polled | PB SM | Open Heifer
 BD: 3/11/17 | Tattoo: E63 | ASA#: 3309875 | Adj. BW: 100 | Adj. WW: 758 | Adj. YW: 938

CCR GRAVITY 9064A

SIRE KBHR COMPASS C324

KBHR Y142

LBR CROCKETT R81

DAM RFS MISS T86

RF MISS J159

CE	BW	WW	YW	ADG	MCE	MILK	MHW	STAY	DOC	CW	YG	MARB	BF	REA	API	TI
5.1	5.1	84.7	124.1	0.25	11.3	22.0	64.4	12.9	11.3	50.8	-0.17	0.26	-0.009	0.98	127.6	79.5

- Lots of girl power here
- Ranks 1% for weaning wt., top 2% for yearling wt.
- Dam has weaned 9 natural calves with D100 going to Coffield's last year



113 | RFS MISS EDNA E127

RYDEEN FARMS | Black | Polled | PB SM | Open Heifer
 BD: 3/19/17 | Tattoo: E127 | ASA#: 3309939 | Adj. BW: 77 | Adj. WW: 800 | Adj. YW: 1039

MR NLC UPGRADE U8676

SIRE SVF ALLEGIANCE Y802

DOUBLE R MISS 29G T18

LCHMN BRIGHT LIGHT L122L

DAM B53

Z174

CE	BW	WW	YW	ADG	MCE	MILK	MHW	STAY	DOC	CW	YG	MARB	BF	REA	API	TI
9.7	3.1	81.5	128.4	0.29	8.8	25.0	65.8	11.5	13.4	50.7	-0.23	0.30	-0.025	1.04	137.8	83.3

- Wonderful Allegiance purebred
- Ranks in top 2% of breed for weaning wt. and 1% for yearling
- Top 20% API, top 2% TI
- Dam is a moderate framed Hoosier with actual weight of 1400 on 10/25/17



114 | RFS MISS ENICE E65

RYDEEN FARMS | Black | Polled | PB SM | Open Heifer
 BD: 3/11/17 | Tattoo: E65 | ASA#: 3309877 | Adj. BW: 82 | Adj. WW: 687 | Adj. YW: 898

MR NLC UPGRADE U8676

SIRE SVF ALLEGIANCE Y802

DOUBLE R MISS 29G T18

TNT TANKER U263

DAM RFS MISS ABUZZ A84

RF STELLA S69

CE	BW	WW	YW	ADG	MCE	MILK	MHW	STAY	DOC	CW	YG	MARB	BF	REA	API	TI
6.4	3.1	81.2	119.4	0.24	9.4	16.9	57.5	10.9	12.4	44.9	-0.31	0.12	-0.030	1.16	120.9	76.9

- Performance pedigree in an Allegiance purebred
- Top 2% of breed for weaning wt., 4% for yearling wt.
- Dam has a fancy baldy, Load Up bred (D158 Miss Dainty) in the bred offering

115

RFS MISS ELLA E97

RYDEEN FARMS

Red | Polled | PB SM | Open Heifer

BD: 3/15/17 | Tattoo: E97 | ASA#: 3309909 | Adj. BW: 86 | Adj. WW: 672 | Adj. YW: 950

GW RED COAT 099TS

SIRE WS ZENITH Z55

HSF MISS SKY 87U

THSR BOMBARDIER U802

DAM RFS MISS ARKANSAS A13

Y142

CE	BW	WW	YW	ADD	MCE	MILK	MHW	STAY	DOC	CW	YG	MARB	BF	REA	API	TI
12.0	2.3	70.2	109.4	0.25	13.6	17.7	52.8	17.8	10.9	38.4	-0.36	0.09	-0.080	0.84	138.9	72.2

- Knockout, clean fronted Zenith female that ranks in top 15% of breed for API
- Dam has weaning wt ratio of 106/3 and last year her Complete son went to Gustafson's at Hines.
- Dam has an actual weight of 1560 on 10/25/17



116

RFS MISS ELIZA E67

RYDEEN FARMS

Black | Polled | 3/4 SM 1/4 AN | Open Heifer

BD: 3/11/17 | Tattoo: E67 | ASA#: 3309879 | Adj. BW: 94 | Adj. WW: 733 | Adj. YW: 916

J BAR J NIGHTRIDE 225Z

SIRE CLRS CONSTITUTION 311 C

CLRS AID XCELLENCE 311 A

HOOKS SHEAR FORCE 38K

DAM RFS MISS T37

RF RABBIT

CE	BW	WW	YW	ADD	MCE	MILK	MHW	STAY	DOC	CW	YG	MARB	BF	REA	API	TI
12.7	0.7	69.2	105.3	0.23	9.4	22.3	56.9	13.4	12.6	33.6	-0.26	0.54	-0.034	0.84	157.3	84.7

- Another standout Constitution female
- Ranks in top 10% of breed for API and TI
- Dam is a "T" model Shear Force that has raised 9 calves including past Vision Sale lots



117

RFS MISS EMMA E2

RYDEEN FARMS

Black | Polled | 5/8 SM 3/8 AN | Open Heifer

BD: 2/25/17 | Tattoo: E2 | ASA#: 3309811 | Adj. BW: 95 | Adj. WW: 654 | Adj. YW: 893

J BAR J NIGHTRIDE 225Z

SIRE CLRS CONSTITUTION 311 C

CLRS AID XCELLENCE 311 A

SVF ALLEGIANCE Y802

DAM C67

RF SOLITA S35

CE	BW	WW	YW	ADD	MCE	MILK	MHW	STAY	DOC	CW	YG	MARB	BF	REA	API	TI
10.7	-0.1	64.5	101.7	0.23	8.6	20.5	52.8	9.0	12.3	30.4	-0.11	0.73	0.003	0.63	145.7	81.6

- A little finer featured Constitution female
- Top 4% of breed for marbling, top 20% API
- Dam is a first calf heifer
- Grand dam has raised 10 natural calves and ratios 104/10 birth wt, 103/10 weaning wt



OPEN HEIFERS

THANK YOU

SCENES FROM 2017



Catalog designed by

6 Generation 6
marketing

Emily Brinkman, owner/designer
419.967.0141 | www.generation6.co

Watch & bid online for FREE at

DVAuction
Broadcasting Real-Time Auctions



Can't make the sale? Bid from home with DV Auction's "real-time" internet bidding service!

Buying online is as easy as 1, 2, 3...

1. Create an account at www.dvauction.com under the "register" tab
2. Apply for bidding approval by clicking on the "details" tab at least 24 hours prior to the auction-a DV representative will notify you once you have been approved
3. Tune in for the sale and make your purchases!

After the sale, contact the sale manager or owner to arrange transportation and payment. **High speed internet** is required for successful bidding-be sure to check the lag-time monitor in the top left corner to ensure real-time broadcasts.

Proxy Bidding-if you can't make time to watch the sale, register a proxy bid and let our system represent your bid while you're away. Look for the "proxy bid" tab on the auction listing, and fill in your maximum bids. We'll handle the rest!

Having troubles? During the auction, you can type a message to the operator at any time for assistance. Our full-time support team can also always be reached at (402) 474-5557.

DVAuction
Broadcasting Real-Time Auctions

Full Service Livestock Marketing

Video - Photography - The Stock Exchange - Ring Service - Banner Ads - Onsite Viewing Service

Better genetics are being rewarded in marketplaces all over this nation. Choosing great genetics from herds associated with Allied Genetic Resources puts you in the position to take advantages of these opportunities and so many more as we look toward the future. The Allied logo stands for quality, it stands for commitment to the future and it means that you can expect the very best in customer services, year after year. There is no room in the future of the beef business for average genetics and no producer should settle for bulls that fail to improve profitability with each new generation.

ALLIED
GENETIC RESOURCES



Once you've made the choice to invest in genetics from the industry's leading herds, identified by the Allied logo, you can take advantage of Allied's customer service programs including marketing load lots of feeder cattle with our Superior Livestock Auction Rep Team and our free consulting services to help you navigate through the world of advanced genetic selection tools to make profitable decisions when buying bulls. Our growing list of feeder cattle marketing specialists are there to help produce more dollars for loads of calves that deserve them. Our consulting services too are available as you

navigate a world with ever more advanced genetic tools for selection and progress. Regardless of your specific needs, when it comes to genetics for the future, we simply offer more. This year our members will market nearly 9000 commercially focused bulls, from 29 states spread throughout the United States. The Allied program is backed by a national presence, but is based on a locally produced and serviced product from the very best and most experienced group of independent seedstock producers. Contact any one of our service oriented staff to learn more about the value proposition offered by Allied and the producers that own it.

MAKE BULL BUYING EASY

No cost genetic procurement is one of the great services offered by our team of experienced representatives. Call today for more details and a simpler 2018.

WWW.ALLIEDGENETICRESOURCES.COM

ALLIED
GENETIC RESOURCES

MARTY ROPP
406-581-7835

CLINT BERRY
417-844-1009

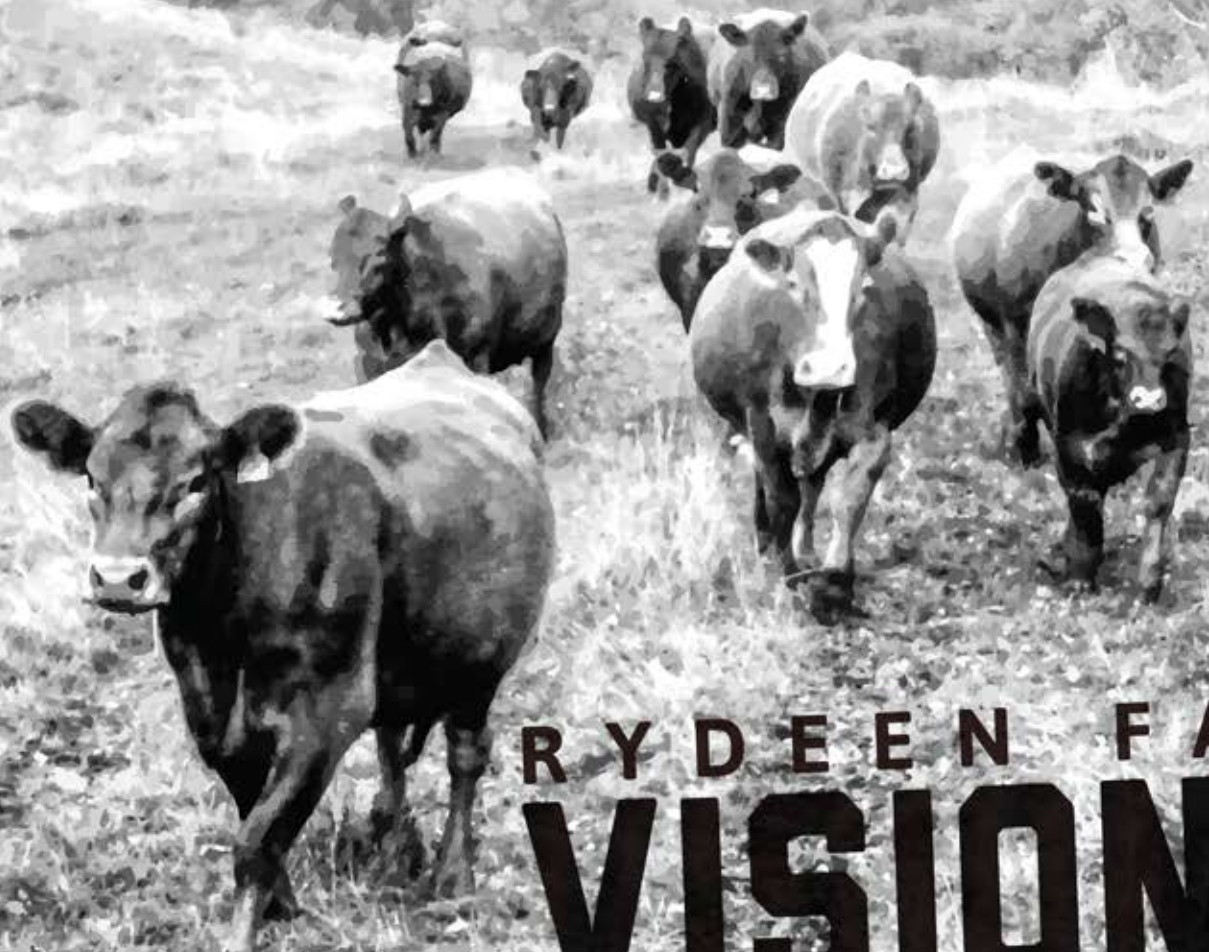
ROCKY FORSETH
406-590-7984

COREY WILKINS
256-590-2487

RYDEEN FARMS

47499 199TH AVENUE
CLEARBROOK, MN 56634

First Class | Postal Carrier: Please Do Not Delay Dated Material



RYDEEN FARMS
VISION^{XX}

SIMMENTAL + SIMANGUS SALE

Sunday, February 11, 2018 | 1 PM

At the Farm | Clearbrook, MN

www.rydeenfarms.com