

RYDEEN FARMS VISION XIX

SIMMENTAL + SIMANGUS SALE

Sunday, February 12, 2017 | 1 PM
At the Farm | Clearbrook, MN
www.rydeenfarms.com



RYDEEN FARMS

Dear Cattle Men and Women

We welcome you to our 19th Bull and Female Sale and our 38th year of selling breeding livestock! Every year, as we start the process of putting our catalog together, we reflect on how privileged we are to work with the amazing people we have come to know in this industry. Our customers are the best—and we appreciate your friendship and confidence in our program!

As we look back on 2016, all we can say is “What a year!” We had a number of significant changes in our family with Claire and Chad getting married in August 2016. We celebrated with them by hosting their wedding reception at the farm. We were so blessed to have a perfect summer day and evening. It was a blast. Additionally, Justis graduated as a mechanical engineer from North Dakota State University in December of 2016. Happily, our children now have the capacity to be a bigger part of our operation. With this in mind, we have decided to move forward independently with our production sale. We have enjoyed our relationships with our sale partners through the years, but, feel now is the right time to embark on another new chapter.

The 2016 growing season was nearly perfect. Due to optimal weather, we never ran out of grass in the pastures. So, for the first time in years, we did not creep feed the calves. The cows stayed in great shape and so did the calves. We tried fence line weaning and found that the calves and cows were a lot less stressed. The bulls were weaned in September and placed on a growing ration developed by our feed consultant from Purina. We strive for a 3.0 ADG using a total mixed ration.

Rydeen Farms has made accurate and thorough data collection a priority for years. This year, however, we were identified by the American Simmental Association as a Performance Advocate. This recognition puts our herd in a select group that demonstrates record-keeping above and beyond baseline data. We feel this is important for our customers to have as much data as possible when making herd selections.

In addition, and new this year, we have genomic enhanced EPDs on all the yearling and 18 month bulls. Again, we feel investing in the technology is more important than ever to help you make a selection that is right for your operation when margins are tighter. If you would like more information regarding this, feel free to visit with Shelby Steele from Neogen/Geneseek who will be available sale day.

We continue to participate in Total Herd Enrollment (THE) through the American Simmental Association. An added benefit for you as a buyer is that the bred heifer **and her 2017 calf** will be registered and transferred to you at no additional cost.

We will offer the video format through DVAuction as we did last year. The animals will be penned for your viewing right outside our new sale facility. Remember, we always welcome calls and visits before sale day so you can have your questions answered before the sale starts. You can watch and bid online for free after registering on DVAuction. Please join us on Sunday, February 12, 2017 either in person or online at DVAuction. Watch for additional information including videos and ultrasound data on our website. Thanks for your interest, we look forward to seeing you soon!

**Paul Rydeen
Rydeen Farms**



**The Rydeen Family
Paul, Lois, Chad, Claire and Justis**

ALLIED
GENETIC RESOURCES



VISION XIX

SIMMENTAL + SIMANGUS SALE

FEBRUARY 12, 2017 | 1:00 PM
AT THE FARM IN CLEARBROOK, MN

TERMS AND CONDITIONS This sale is conducted under the standard terms and conditions adopted by the American Simmental Association. If you have any questions, please contact us.

EPD DATA EPD's Are Spring 2017 epds. However, all yearling and 18 month old bulls have had GGP-LD testing. Check back for updates as not all results were available at publishing.

REGISTRATION PAPERS Registration papers will be transferred on all animals. Please inform the clerk of your ASA number.

FEEDING ARRANGEMENTS If you are unable to take your bulls home on sale day, we will feed them for free until April 1, 2017. The bulls we feed will be put in with our bulls and treated the same. Successful buyers are responsible for animals purchased sale day. We encourage you to purchase mortality insurance. We will be semen testing bulls left here as able based on schedules. If you are interested in having your animal tested, please let us know.

TRUCKING We will assist buyers in coordinating and making the most economical hauling arrangements.

HERD HEALTH We have completed 4 years of whole herd Johnes testing and all dams of sale cattle tested negative in 2016.

Spring 2016 born bulls were vaccinated with UltraBac 8 and BoviShield Gold 5. They were vaccinated in the fall with One Shot UltraBac 8, BoviShield Gold 5 and poured with Eprinex in September and re-poured in December and given InForce. Fall bulls were vaccinated in the spring of 2016 with Vista Once, UltraBac 8 and poured with Dectomax. In the fall of 2016, they were vaccinated with UltraBac 8, In Force and poured with Ivermectin.

24 month old bulls were vaccinated in the spring with UltraBac 8, Long Range. Revaccinated with UltraBac 8 and poured with Ivermectin in the fall.

Bred heifers were vaccinated with UltraBac 8 and BoviShield Gold and Long Range prior to breeding. The bred heifers were ultrasounded on 7/26/16 and 10/12/16 for pregnancy. In the fall of 2016 they were vaccinated with UltraBac 8 poured with Eprinex and In Force. Bred females are Bangs vaccinated and have had two doses of Scourguard 4KC.

Open heifers were vaccinated with UltraBac 8 and BoviShield Gold 5 and poured with Ivermectin. They are Bangs vaccinated.

ADDITIONAL INFORMATION Ultrasound data will be available the day of the sale

SEMEN RIGHTS We will retain ¼ semen interest on all bulls sold in the sale unless specifically noted.

ANNOUNCEMENTS Announcements made sale day and from the auction block during the sale, take precedence over printed material in the catalog or other printed material associated with the sale. Anyone attending this sale attends at his or her own risk; we are not responsible for accidents, damages or stolen items.

LIVESTOCK INSURANCE Lindfors Insurance Agency will be available sale day, 218-435-6585.

SELLING 119 LOTS
50 YEARLING BULLS
16 18 MONTH OLD BULLS
8 24 MONTH OLD BULLS
39 BRED FEMALES | 6 OPEN FEMALES

SUNDAY, FEBRUARY 12, 2017

9:00 a.m.

Cattle available for viewing

12:00 p.m.

Complimentary Lunch at Noon
At Rydeen Farms, Clearbrook, Minnesota
Located ½ mile north of Clearbrook on #5;
3 miles east on #4
and ½ mile south on 199th ave.

1:00 p.m.

Sale Begins

SALE DAY PHONES

Farm. 218-776-3338

Paul cell. 218-280-1916

Lois cell. 218-280-8196

Claire cell. 218-280-0384

Justis cell. 218-280-2032

View catalog, links to videos, and
ultrasound data online at
www.rydeenfarms.com

AUCTIONEER

Tracy Harl, Loup City, NE,
402-469-3852 cell

LODGING

Piper's Inn, Clearbrook, MN, 218-776-2323

SALE REPRESENTATIVES

Alex Acheson. 785-366-1185
Farm and Ranch Guide

Beau Bendigo. 605-515-3223
Cattle Business Weekly

Bill Schermer. 641-425-2641
Midwest Beef Producer

Russ Danielson. 701-261-2742
American Simmental Association

Luke Keller. 701-471-1142
Progressive Genetic Solutions

Garrett R. Thomas. 936-714-4591 (Call or text)
Allied Genetic Resources

Justin Dikoff. 605-290-0635
DVAuction

DVAuction
Broadcasting Real-Time Auctions

**SALE BROADCASTED ONLINE
THROUGH DVAUCTION.**

Bid online at www.dvauction.com or go to page
33 (inside back cover) for more information.

REFERENCE SIRES



MCM TOP GRADE



GW ROBUST



MOHNEN SUBSTANTIAL



RFS BULLET PROOF B42



TNT 90 PROOF



ELLINGSON LOAD UP

PUREBRED SIMMENTAL REFERENCE SIRES

Name	ASA #	Sire x Dam	CE	BW	WW	YW	MCE	ADG	MILK	MWW	API	TI
Hook's Shear Force 38K	2081939	Nichols Legacy G151 x C&D Tracy	22.9	-3.6	53.3	69.5	13.2	0.1	31.4	58.1	180.6	81.9
Dikemans Sure Bet	2294262	TJ 57J The Gambler x Megan 9M	11.4	0	60.7	86	8.2	0.16	14.2	44.6	160.7	80.1
WS High Stakes W115	2499571	HSF High Roller 12T x WS Miss Dolly T10	19.7	-4.1	48.8	80.2	17	0.2	39.3	66.7	144.3	67.9
SVF Allegiance Y802	2638036	MR NLC Upgrade U8676 x Double R Miss 29G T18	8.8	1.5	82.2	125.1	4.2	0.27	20.3	61.4	117.6	82.1
TNT 90 Proof	2791334	DCR MR Moon Shine X102 x TNT Miss S17	8.1	2.7	87.3	135	12.5	0.3	20.6	64.3	134	83.1
Ellingson Complete	2791433	R Plus Hard Rock 145X x Ellingson Ms Amigo X5	10.3	2.8	81.3	107.8	10.1	0.17	12	52.6	112.6	73.7
Ellingson Load Up	2915402	Remington Lock N Load54U x Brant R17K Ms Top Shelf	10.3	0.9	49.5	86.3	4.7	0.23	18.9	43.6	101.7	55.7
RFS Bulletproof B42	2930104	GW Redestined 642X x RFS Miss Z119	10.8	1.6	81.6	124.8	8.8	0.27	17.8	58.6	154.5	88.5

PUREBRED ANGUS REFERENCE SIRES

Name	ASA #	Sire x Dam	CE	BW	WW	YW	MCE	ADG	MILK	MWW	API	TI
Connealy Thunder	2437235	Baldrige Kaboom K243 KCF x Parka Of Conanga 241	17.6	-3.1	52.6	99.5	10.9	0.29	24.6	50.8	137.2	69.2
Bismarck (SAV 5682)	2492333	G A R Grid Maker x S A V Abigale 0451	20	-2.7	65.8	107.2	13.4	0.26	23	55.4	141.7	77.4
Connealy In Sure 8524	2627830	Mytty In Focus x Entreena of Conanga 657	28.9	-6.6	50.6	94.8	13.3	0.28	35.4	60.6	195.5	93.4
Connealy Irish	2798159	Connealy Wrangler x Black Crest of Conanga 5640	16.9	-2.8	58.1	116.1	12.8	0.36	23.2	52.1	133.9	77
Mohnen Substantial	2949910	Benfield Substance 8506 x Mohnen GLYN MAWR Elba 1758	28	-7	61.4	112.2	14.6	0.32	24.5	55.1	141.6	78

SIMANGUS REFERENCE SIRES

Name	ASA #	Sire x Dam	CE	BW	WW	YW	MCE	ADG	MILK	MWW	API	TI
TNT Punch	2625005	Mytty In Focus x Entreena of Conanga 657	7.9	0.7	58.2	98	16.3	0.25	23.9	53	125	66.5
GW Robust	2694778	GW Premium Beef 021TS x GW Miss GPRD 123X	13.1	1.4	85.7	131.7	6.6	0.29	22.3	65.2	145.2	88.7
MCM Top Grade	2540315	MR NLC Upgrade U8676 x MCM 513R	8.2	-0.9	57.9	94.8	8.9	0.23	26.3	55.3	135.5	78.1
GLS Combination R2	2306323	B/R New Frontier 095 x GLS Hostess H16	8.3	2.5	68	116	4.6	0.3	20.9	54.9	110.9	71.5
TNT Dual Focus	2421851	Mytty In Focus x TNT Miss R77	17.1	-1	63.7	96.9	8.4	0.21	15.3	47.1	159.5	78.4
KNH Security	2790152	S Chisum 6175 x KNH Miss 58S	12.1	0	62.1	108.8	12.3	0.29	26.1	57.2	128.6	67.9

1

RFS DRAKE D51

RYDEEN FARMS

Homo Black | Homo Polled | PB SM | GE-EPDs | Bull
BD: 3/10/16 | Tattoo: D51 | ASA#: 3178522

MR NLC UPGRADE U8676

SIRE MCM TOP GRADE 018X

MCM 513R

GW LUCKY MAN 644N

DAM U18

RF MISS RAM P284

ACT BW	93
ADJ WW	852
ADJ YW	1303
FRAME SC	5.4
ADG	2.8
WDA	3.7
ADJ SC	37.5

CE	BW	WW	YW	ADG	MCE	MILK	MWW	STAY	DOC	CW	YG	MARB	BF	REA	API	TI
10.4	0.0	58.1	92.6	0.22	12.3	28.2	57.2	10.3	11.7	25.4	-0.38	0.52	-0.063	0.88	145.2	78.4

- Drake is a standout.
- Ranks in top 1% of the breed for marbling.
- Top 10% of breed for API, TI.
- Dam's 7 natural calves all ratio 103 birth wt. and weaning wt.



LOT 1

2

RFS DAKOTA D71

RYDEEN FARMS

Homo Black | Homo Polled | PB SM | GE-EPDs | Bull
BD: 3/13/16 | Tattoo: D71 | ASA#: 3178542

MR NLC UPGRADE U8676

SIRE MCM TOP GRADE 018X

MCM 513R

HOOKS SHEAR FORCE 38K

DAM RFS MISS T37

RF RABBIT

ACT BW	87
ADJ WW	868
ADJ YW	1289
FRAME SC	5.9
ADG	2.6
WDA	3.7
ADJ SC	38.7

CE	BW	WW	YW	ADG	MCE	MILK	MWW	STAY	DOC	CW	YG	MARB	BF	REA	API	TI
14.2	-1.8	54.1	79.3	0.16	10.9	30.2	57.2	12.3	11.0	14.5	-0.54	0.40	-0.067	1.20	148.8	76.2

- Dakota ranks in the top 5% of breed for marbling, API and 2% ribeye area.
- Dam ranked in top 2% of breed for calving ease and stay index.
- Maternal sister, a great baldy heifer in the bred group, Crystal C77, Lot 87.



LOT 2

3

RFS DEXTER D34

RYDEEN FARMS

Black | Polled | PB SM | Bull

BD: 3/6/16 | Tattoo: D34 | ASA#: 3178505

MR NLC UPGRADE U8676

SIRE MCM TOP GRADE 018X

MCM 513R

ELLINGSON RIGHT ON W944

DAM Y2

RF MISS T22

ACT BW	90
ADJ WW	854
ADJ YW	1349
FRAME SC	5.1
ADG	3.1
WDA	3.8
ADJ SC	39.3

CE	BW	WW	YW	ADG	MCE	MILK	MWW	STAY	DOC	CW	YG	MARB	BF	REA	API	TI
9.0	0.1	61.4	94.8	0.21	12.2	23.8	54.5	11.4	10.1	26.6	-0.37	0.36	-0.070	0.82	137.8	75.6

- Dexter ranks in the top 10% of breed for marbling.
- Solid black, high capacity herd sire prospect.
- Moderate-framed dam, 4 natural calves in a 358 interval and ratio 101 (4) birth.



LOT 3

4

RFS DUKE D183

RYDEEN FARMS

Black | Homo Polled | PB SM | GE-EPDs | Bull

BD: 4/7/16 | Tattoo: D183 | ASA#: 3178654

REMINGTON LOCK N LOAD54U

SIRE ELLINGSON LOAD UP B4022

BRANT R17K MS TOP SHELF

HOOKS SHEAR FORCE 38K

DAM RFS MISS Z93

U64

ACT BW	92
ADJ WW	852
ADJ YW	1347
FRAME SC	5.4
ADG	3.1
WDA	3.8
ADJ SC	41.0

CE	BW	WW	YW	ADG	MCE	MILK	MWW	STAY	DOC	CW	YG	MARB	BF	REA	API	TI
11.8	1.1	61.9	90.4	0.18	7.4	18.7	49.7	10.0	11.1	25.3	-0.39	0.05	-0.037	1.11	118.8	66.5

- Duke is the first bull offered from our new (Load Up) herd sire.
- Great EPD profile and phenotype.
- Dam has had 3 natural calves, 2 of the females are retained in the herd.



LOT 4



LOT 5

5

RFS DANTE D31

RYDEEN FARMS

Black | Polled | PB SM | Bull
BD: 3/6/16 | Tattoo: D31 | ASA#: 3178502

SIRE MR NLC UPGRADE U8676
SVF ALLEGIANCE Y802
DOUBLE R MISS 29G T18
MR NLC SUPERIOR S6018

DAM X46
RFS EFFIE H83

ACT BW	90
ADJ WW	875
ADJ YW	1403
FRAME SC	5.3
ADG	3.3
WDA	3.9
ADJ SC	39.3

CE	BW	WW	YW	ADG	MCE	MILK	MWW	STAY	DOC	CW	YG	MARB	BF	REA	API	TI
8.0	1.8	80.6	123.5	0.27	8.5	15.9	56.2	10.3	12.8	45.7	-0.33	0.08	-0.049	1.10	123.1	76.9

- Dante ranks in the top 3% of breed for weaning wt., top 2% of breed yearling wt.
- Moderate framed dam has a great udder and has had 5 natural calves all below average birth wt.
- Ratios 101 birth wt., 102 weaning wt., 106 yearling wt.



LOT 6

6

RFS DAX D94

RYDEEN FARMS

Homo Black | Homo Polled | PB SM | GE-EPDs | Bull
BD: 3/16/16 | Tattoo: D94 | ASA#: 3178565

SIRE MR NLC UPGRADE U8676
MCM TOP GRADE 018X
MCM 513R
GFI RAMBLER J114

DAM U80
RFS MADELINE

ACT BW	85
ADJ WW	805
ADJ YW	1226
FRAME SC	4.5
ADG	2.6
WDA	3.5
ADJ SC	40.9

CE	BW	WW	YW	ADG	MCE	MILK	MWW	STAY	DOC	CW	YG	MARB	BF	REA	API	TI
8.9	-1.2	52.4	79.3	0.17	11.5	26.4	52.6	10.3	9.7	15.7	-0.41	0.30	-0.041	1.01	130.3	70.3

- Dax is a long bodied, low birth wt. herd sire prospect.
- Top 15% of breed for rib eye area.
- Dam has a 365 day calving interval on 7 natural calves, all have above average weaning wts.



LOT 7

7

RFS DART D100

RYDEEN FARMS

Homo Black | Homo Polled | PB SM | GE-EPDs | Bull
BD: 3/16/16 | Tattoo: D100 | ASA#: 3178571

SIRE MR NLC UPGRADE U8676
MCM TOP GRADE 018X
MCM 513R
LBR CROCKETT R81

DAM RFS MISS T86
RF MISS J159

ACT BW	105
ADJ WW	894
ADJ YW	1308
FRAME SC	6.5
ADG	2.6
WDA	3.8
ADJ SC	38.9

CE	BW	WW	YW	ADG	MCE	MILK	MWW	STAY	DOC	CW	YG	MARB	BF	REA	API	TI
4.4	2.5	61.3	91.7	0.19	9.5	26.7	57.3	8.2	10.5	28.3	-0.40	0.40	-0.047	1.10	122.4	72.7

- Dart is an eye catching fellow with a 894# 205 day wt.
- Recommended for cows to wean the big ones!
- Dam, at 10 years, has calved 8 seasons in a 363 day interval.
- Maternal sister in bred lineup, Chelsea C105, Lot 82.



LOT 8

8

RFS DENALI D120

RYDEEN FARMS

Black | Polled | PB SM | Bull
BD: 3/19/16 | Tattoo: D120 | ASA#: 3178592

SIRE TJ 57J THE GAMBLER
DIKEMANS SURE BET
MEGAN 9M
RF DEWPOINT W78

DAM RFS MISS ACHIEVE A168
W53

ACT BW	90
ADJ WW	933
ADJ YW	1362
FRAME SC	5.8
ADG	2.7
WDA	3.8
ADJ SC	42.0

CE	BW	WW	YW	ADG	MCE	MILK	MWW	STAY	DOC	CW	YG	MARB	BF	REA	API	TI
9.8	1.8	75.7	103.4	0.17	9.6	17.3	55.2	14.8	12.7	33.2	-0.42	0.23	-0.057	1.15	138.9	77.8

- Denali is a high weaning wt. and yearling wt. bull.
- Ranked in the top 10% of the breed for weaning wt., top 15% API and 10% TI.
- Dam's a great one—last year her Connealy Insure herd sire sold to the Belsheim family at Ogilvie, MN.

9**RFS DENZEL D67****RYDEEN FARMS** | Homo Black | Homo Polled | 3/4 SM 1/4 AN | GE-EPDs | Bull
BD: 3/13/16 | Tattoo: D67 | ASA#: 3178538

SIRE TJ 57J THE GAMBLER
DIKEMANS SURE BET
MEGAN 9M

DAM Y79
W R BAR IN FOCUS 730
W3

ACT BW 88
ADJ WW 788
ADJ YW 1214
FRAME SC 5.9
ADG 2.7
WDA 3.5
ADJ SC 40.2

CE	BW	WW	YW	ADG	MCE	MILK	MWW	STAY	DOC	CW	YG	MARB	BF	REA	API	TI
15.5	-1.4	55.1	78.9	0.15	9.3	19.1	46.6	14.6	15.1	14.8	-0.37	0.58	-0.017	1.07	154.0	73.8

- Denzel is a low birth wt., calving ease specialist.
- Ranks in top 2% of breed for docility, top 15% for marbling, top 10% API.
- Maternal sister, Casey C41, sell in the bred group as Lot 89.
- Dam's a great 1/2 blood who raised 4 Vision Sale highlights-- her 2015 Upgrade son, RFS Beckon, went to Joe Wagner at Brandon, MN.

**LOT 9****10****RFS DENVER D110****RYDEEN FARMS** | Homo Black | Homo Polled | PB SM | GE-EPDs | Bull
BD: 3/18/16 | Tattoo: D110 | ASA#: 3178582

SIRE MR NLC UPGRADE U8676
MCM TOP GRADE 018X
MCM 513R

DAM X50
HTP SVF IN DEW TIME
OLDF LADY JOKER P848

ACT BW 91
ADJ WW 778
ADJ YW 1244
FRAME SC 4.5
ADG 2.9
WDA 3.5
ADJ SC 38.5

CE	BW	WW	YW	ADG	MCE	MILK	MWW	STAY	DOC	CW	YG	MARB	BF	REA	API	TI
9.4	-0.4	50.1	77.4	0.17	10.2	26.4	51.5	10.7	10.6	15.8	-0.42	0.37	-0.049	1.00	133.7	70.0

- Denver is a low birth wt. bull—ranks in top 15% of breed.
- Top 10% of the breed for marbling, top 15% ribeye area.
- Dam's had 5 sons, in 2016, her high selling Allegiance son C49 went to Werning's at Emery, SD.

**LOT 10****11****RFS DEMOCRACY D146****RYDEEN FARMS** | Black | Homo Polled | PB SM | Bull
BD: 3/25/16 | Tattoo: D146 | ASA#: 3178618

SIRE MR NLC UPGRADE U8676
MCM TOP GRADE 018X
MCM 513R

DAM RF SONDR A 538
COTT-GFI FULLBACK 0038N
SHOESTRING MICKS 170C

ACT BW 96
ADJ WW 899
ADJ YW 1396
FRAME SC 6.6
ADG 3.1
WDA 4.0
ADJ SC 38.3

CE	BW	WW	YW	ADG	MCE	MILK	MWW	STAY	DOC	CW	YG	MARB	BF	REA	API	TI
6.1	1.8	66.3	102.0	0.22	9.1	30.1	63.2	9.3	10.1	33.4	-0.37	0.30	-0.052	1.02	125.4	75.0

- Check out Democracy's big time weaning and yearling wts.
- Wide topped, solid black.
- Dam's 11 years old, has a 107 weaning wt. ratio on all 9 calves born in a 362 day interval.
- Ranks top 4% of breed for milk and maternal weaning wt.

**LOT 11****12****RFS DESI D75****RYDEEN FARMS** | Homo Black | Homo Polled | PB SM | GE-EPDs | Bull
BD: 3/13/16 | Tattoo: D75 | ASA#: 3178546

SIRE MR NLC UPGRADE U8676
SVF ALLEGIANCE Y802
DOUBLE R MISS 29G T18

DAM X91
MR NLC SUPERIOR S6018
RFS ELGIN H68

ACT BW 92
ADJ WW 858
ADJ YW 1258
FRAME SC 5.5
ADG 2.5
WDA 3.6
ADJ SC 37.7

CE	BW	WW	YW	ADG	MCE	MILK	MWW	STAY	DOC	CW	YG	MARB	BF	REA	API	TI
7.0	2.0	67.3	95.9	0.18	9.1	24.9	58.6	8.7	12.0	29.6	-0.53	0.00	-0.061	1.41	108.1	67.7

- Desi is a blaze faced Allegiance son.
- Dam is a great Superior cow, has a daughter, Clarissa C142, Lot 101 in the bred heifer line up.
- In 2015 Vision Sale, her Tuition son sold to Dan Lyberg at Lancaster, MN.

**LOT 12**



LOT 13



LOT 14



LOT 15



LOT 16

13 | RFS DIESEL D77

RYDEEN FARMS | Homo Black | Homo Polled | 5/8 SM 3/8 AN | GE-EPDs | Bull
BD: 3/14/16 | Tattoo: D77 | ASA#: 3178548

SIRE GW PREMIUM BEEF 021TS
GW ROBUST 605Z
GW MISS GPRD 123X
ELLINGSON LEGACY M229

DAM Y78
RF SOLITA S35

ACT BW	85
ADJ WW	985
ADJ YW	1539
FRAME SC	6.7
ADG	3.5
WDA	4.4
ADJ SC	41.7

CE	BW	WW	YW	ADG	MCE	MILK	MWW	STAY	DOC	CW	YG	MARB	BF	REA	API	TI
14.7	0.2	86.0	139.4	0.33	10.0	23.8	66.8	10.5	14.4	53.1	-0.23	0.56	-0.030	1.00	156.9	90.9

- Diesel has power! Top 10% of breed for API, top 1% for TI.
- Ratios: 106 birth wt., 115 weaning wt., 116 yearling wt.
- Second highest weaning wt. bull ranked at top 1% of breed for weaning and yearling wts.
- Maternal sib, Allegiance son, sold to Erik Finney in 2016.

14 | RFS DICKINSON D61

RYDEEN FARMS | Homo Black | Hetero Polled | 3/4 SM 1/4 AN | GE-EPDs | Bull
BD: 3/12/16 | Tattoo: D61 | ASA#: 3178532

SIRE GW PREMIUM BEEF 021TS
GW ROBUST 605Z
GW MISS GPRD 123X
TRIPLE C INVASION R47K

DAM RS MISS INVASION U102
SF BLK NIRVANA 414

ACT BW	92
ADJ WW	894
ADJ YW	1329
FRAME SC	6.4
ADG	2.7
WDA	3.8
ADJ SC	38.6

CE	BW	WW	YW	ADG	MCE	MILK	MWW	STAY	DOC	CW	YG	MARB	BF	REA	API	TI
12.6	1.3	67.0	101.4	0.22	6.6	25.7	59.2	12.4	14.5	32.2	-0.31	0.49	-0.047	0.87	150.9	81.1

- Dickinson is a solid black 3/4 blood.
- Calving ease and excellent weaning wt.
- Dam has great udder, with 7 natural calves in 361 day interval.

15 | RFS DIPLOMAT D145

RYDEEN FARMS | Homo Black | Homo Polled | 5/8 SM 3/8 AN | GE-EPDs | Bull
BD: 3/25/16 | Tattoo: D145 | ASA#: 3178617

SIRE GW PREMIUM BEEF 021TS
GW ROBUST 605Z
GW MISS GPRD 123X
ELLINGSON LEGACY M229

DAM Y130
U64

ACT BW	92
ADJ WW	934
ADJ YW	1405
FRAME SC	5.6
ADG	3.0
WDA	4.1
ADJ SC	38.3

CE	BW	WW	YW	ADG	MCE	MILK	MWW	STAY	DOC	CW	YG	MARB	BF	REA	API	TI
13.0	1.5	79.3	121.8	0.27	5.6	21.1	60.8	9.3	13.6	44.4	-0.28	0.54	-0.032	1.05	140.6	84.0

- Diplomat is a solid black 5/8 Sim/Angus with a great profile.
- Ratios: 109 weaning and 106 yearling wt.
- Top 4% of breed for weaning wt., 10% yearling wt., MWW and docility.
- Dam's moderate framed, ratios: 104 (4) birth wt., 103 (4) yearling wt.

16 | RFS DOMINICK D96

RYDEEN FARMS | Homo Black | Homo Polled | 3/4 SM 1/4 AN | GE-EPDs | Bull
BD: 3/16/16 | Tattoo: D96 | ASA#: 3178567

SIRE GW PREMIUM BEEF 021TS
GW ROBUST 605Z
GW MISS GPRD 123X
GFI RAMBLER J114

DAM RF SEASON S141
RFS REBA G38

ACT BW	88
ADJ WW	971
ADJ YW	1489
FRAME SC	7.0
ADG	3.3
WDA	4.2
ADJ SC	37.4

CE	BW	WW	YW	ADG	MCE	MILK	MWW	STAY	DOC	CW	YG	MARB	BF	REA	API	TI
10.7	1.7	83.8	127.0	0.27	9.3	19.0	60.9	12.8	13.4	47.6	-0.28	0.39	-0.042	1.00	149.2	86.9

- Dominick ranks in the top 2% of the breed for weaning wt., top 3% for yearling wt.
- API is in the top 15%, TI is top 3% of breed.
- Ratios: 103 birth wt., 113 weaning wt., 112 yearling wt.
- Dam is 10 years old with 3 daughters in the herd.

17

RFS DRIVER D125

RYDEEN FARMS Homo Black | Homo Polled | 3/4 SM 1/4 AN | GE-EPDs | Bull
BD: 3/20/16 | Tattoo: D125 | ASA#: 3178597

SIRE GW PREMIUM BEEF 021TS
GW ROBUST 605Z
GW MISS GPRD 123X
TNT TANKER U263
DAM RFS MISS Z84
RF RUTH

ACT BW	88
ADJ WW	961
ADJ YW	1401
FRAME SC	6.1
ADG	2.8
WDA	4.0
ADJ SC	39.6

CE	BW	WW	YW	ADG	MCE	MILK	MWW	STAY	DOC	CW	YG	MARB	BF	REA	API	TI
9.9	1.4	83.7	127.9	0.28	11.0	23.6	65.5	12.9	14.2	47.7	-0.36	0.22	-0.053	1.16	140.3	83.9

- Driver is a solid black, smooth shouldered, clean fronted bull.
- Ranks in the top 2% of the breed for weaning, top 3% for yearling.
- Ratios: 103 birth wt., 112 weaning wt., 106 yearling wt.
- Dam is a moderate-framed, Tanker beauty.



LOT 17

18

RFS DUBLIN D86

RYDEEN FARMS Homo Black | Homo Polled | PB SM | GE-EPDs | Bull
BD: 3/15/16 | Tattoo: D86 | ASA#: 3178557

SIRE MR NLC UPGRADE U8676
MCM TOP GRADE 018X
MCM 513R
ELLINGSON RIGHT ON W944
DAM RFS MISS Z71
RF SESAME S164

ACT BW	90
ADJ WW	872
ADJ YW	1442
FRAME SC	6.0
ADG	3.6
WDA	4.0
ADJ SC	40.8

CE	BW	WW	YW	ADG	MCE	MILK	MWW	STAY	DOC	CW	YG	MARB	BF	REA	API	TI
8.6	0.5	67.2	107.7	0.25	10.2	24.9	58.5	11.0	10.7	35.0	-0.35	0.34	-0.072	0.85	137.4	78.2

- Dublin ranks in the top 10% of the breed for ADG, top 5 % for marbling.
- Great weaning and yearling wt. bull.
- API ranks in the top 15% of the breed, TI in top 10%.
- Dam's 3 calf crops all ratio over 100 for birth, weaning and yearling wts.



LOT 18

19

RFS DURANGO D57

RYDEEN FARMS Hetero Black | Homo Polled | 3/4 SM 1/4 AN | GE-EPDs | Bull
BD: 3/11/16 | Tattoo: D57 | ASA#: 3178528

SIRE GW PREMIUM BEEF 021TS
GW ROBUST 605Z
GW MISS GPRD 123X
MR NLC SUPERIOR S6018
DAM X72
RF SIGRID S25

ACT BW	94
ADJ WW	938
ADJ YW	1523
FRAME SC	6.9
ADG	3.7
WDA	4.3
ADJ SC	40.6

CE	BW	WW	YW	ADG	MCE	MILK	MWW	STAY	DOC	CW	YG	MARB	BF	REA	API	TI
8.0	2.6	84.3	134.3	0.31	7.9	26.8	69.0	12.3	14.9	53.5	-0.29	0.33	-0.029	1.21	141.7	85.7

- Durango looks like truck!
- Top 1% of breed for weaning and 2% yearling wts.
- Top 3% of breed for docility with great API and TI.
- Dam's progeny ratios: 101(5) birth wt., 105 (5) weaning wt.



LOT 19

20

RFS DETROIT D42

RYDEEN FARMS Black | Polled | 3/4 SM 1/4 AN | Bull
BD: 3/9/16 | Tattoo: D42 | ASA#: 3178513

SIRE NICHOLS LEGACY G151
HOOKS SHEAR FORCE 38K
C&D TRACY
HART FINAL ANSWER 0048
DAM B213
RFS MISS Z187

ACT BW	80
ADJ WW	884
ADJ YW	1306
FRAME SC	5.4
ADG	2.7
WDA	3.6
ADJ SC	38.5

CE	BW	WW	YW	ADG	MCE	MILK	MWW	STAY	DOC	CW	YG	MARB	BF	REA	API	TI
17.9	-1.2	70.4	97.5	0.17	12.0	26.8	62.0	14.5	13.2	25.5	-0.36	0.45	-0.042	0.98	154.9	80.4

- Detroit is an attractive bull with an attractive EPD profile.
- Top 5% of the breed for calving ease, top 10% API and TI.
- 85 lb. at birth and 884 lb. at weaning.
- Owned by Justis Rydeen



LOT 20



LOT 21

21 | RFS DUNHAM D112

RYDEEN FARMS | Homo Black | Homo Polled | 3/4 SM 1/4 AN | GE-EPDs | Bull
BD: 3/18/16 | Tattoo: D112 | ASA#: 3178584

SIRE MYTTY IN FOCUS
TNT DUAL FOCUS T249
TNT MISS R77
HTP SVF IN DEW TIME

DAM W107
RF MISS RAM P284

ACT BW	92
ADJ WW	909
ADJ YW	1365
FRAME SC	6.0
ADG	2.9
WDA	4.0
ADJ SC	39.5

CE	BW	WW	YW	ADG	MCE	MILK	MWW	STAY	DOC	CW	YG	MARB	BF	REA	API	TI
14.1	0.2	71.4	102.9	0.20	9.9	11.4	47.0	12.8	12.1	31.0	-0.13	0.59	-0.022	0.48	151.7	80.0

- Dunham is a 3/4 blood box car.
- Great phenotype and EPD profile.
- Dam's had 6 natural calves, all below average birth wt.
- Maternal sib, a Security son, sold in 2016 to Gerald Johnson, Fosston.



LOT 22

22 | RFS DASH D60

RYDEEN FARMS | Homo Black | Homo Polled | 5/8 SM 1/4 AN 1/8 CS | GE-EPDs | Bull
BD: 3/12/16 | Tattoo: D60 | ASA#: 3178531

SIRE GW PREMIUM BEEF 021TS
GW ROBUST 605Z
GW MISS GPRD 123X
KBHR Y068 HARLEY

DAM RFS MISS AMARYLLIS A130
X78

ACT BW	94
ADJ WW	944
ADJ YW	1392
FRAME SC	6.4
ADG	2.8
WDA	3.9
ADJ SC	35.6

CE	BW	WW	YW	ADG	MCE	MILK	MWW	STAY	DOC	CW	YG	MARB	BF	REA	API	TI
10.3	3.3	84.7	130.4	0.29	7.3	19.2	61.5	12.2	15.8	52.1	-0.31	0.30	-0.042	1.15	140.8	83.7

- Dash is mild mannered fellow who ranks in the top 1% of the breed for docility.
- Top 1% of breed for weaning wt. top 2% yearling wt.
- Dam's a super 2nd calf heifer who sent a Shear Force son to Matt Cole in 2016.



LOT 23

23 | RFS DAZZLE D62

RYDEEN FARMS | Homo Black | Hetero Polled | PB SM | GE-EPDs | Bull
BD: 3/12/16 | Tattoo: D62 | ASA#: 3178533

SIRE TJ 57J THE GAMBLER
DIKEMANS SURE BET
MEGAN 9M

DAM KBHR Y068 HARLEY
RFS MISS ACCORD A16
RF SOFIA S13

ACT BW	92
ADJ WW	860
ADJ YW	1311
FRAME SC	5.7
ADG	2.8
WDA	3.6
ADJ SC	40.6

CE	BW	WW	YW	ADG	MCE	MILK	MWW	STAY	DOC	CW	YG	MARB	BF	REA	API	TI
10.5	1.1	62.8	89.1	0.16	8.2	16.3	47.7	15.4	13.4	24.3	-0.40	0.17	-0.045	1.08	134.4	69.5

- Dazzle is a handsome purebred with an outstanding weaning wt.
- Balanced EPDs and ranks in the top 10% of the breed for docility.
- Dam's a wonderful 2nd calf heifer.



LOT 24

24 | RFS DEALER D141

RYDEEN FARMS | Homo Black | Hetero Polled | 3/4 SM 1/4 AN | GE-EPDs | Bull
BD: 3/23/16 | Tattoo: D141 | ASA#: 3178613

SIRE GW PREMIUM BEEF 021TS
GW ROBUST 605Z
GW MISS GPRD 123X
TNT CRUZER K265

DAM U102
RF MISS N191

ACT BW	105
ADJ WW	984
ADJ YW	1547
FRAME SC	6.9
ADG	3.5
WDA	4.4
ADJ SC	38.2

CE	BW	WW	YW	ADG	MCE	MILK	MWW	STAY	DOC	CW	YG	MARB	BF	REA	API	TI
6.6	5.9	93.0	139.1	0.29	5.2	18.4	64.9	11.1	13.9	60.7	-0.32	0.22	-0.065	1.11	127.0	82.5

- Dealer is a 3/4 blood powerful calf.
- Ranks in the top 1% of breed for weaning wt, yearling wt.
- Highest yearling wt. bull at 1547.
- Dam always weans a great one, with a maternal brother going to Coffield's in 2016.

25

RFS DEPUTY D25

RYDEEN FARMS | Black | Homo Polled | 3/8 SM 1/2 AN 1/8 CS | GE-EPDs | Bull
BD: 3/3/16 | Tattoo: D25 | ASA#: 3178496

SIRE MYTTY IN FOCUS
CONNEALY IN SURE 8524
ENTREENA OF CONANGA 657
KBHR Y068 HARLEY

DAM B169
X78

ACT BW	82
ADJ WW	822
ADJ YW	1287
FRAME SC	5.8
ADG	3.0
WDA	3.5
ADJ SC	41.1

CE	BW	WW	YW	ADG	MCE	MILK	MWW	STAY	DDC	CW	YG	MARB	BF	REA	API	TI
17.8	-1.5	59.2	98.4	0.25	10.4	27.8	57.4	10.2	13.1	26.7	-0.27	0.61	-0.014	0.93	163.3	78.8

- Deputy is a level topped, soggy, Sim/Angus herd bull prospect.
- Top 5% of breed Calving Ease, top 4% for API, 15% for TI
- Dam's a first calf heifer (ratios: 106 weaning, 105 yearling wt).



LOT 25

26

RFS DESTINY D7

RYDEEN FARMS | Black | Polled | 3/8 SM 5/8 AN | Bull
BD: 2/24/16 | Tattoo: D7 | ASA#: 3178478

SIRE BENFIELD SUBSTANCE 8506
MOHNEN SUBSTANTIAL 272
MOHNEN GLYN MAWR ELBA 1758
W/C UNITED 956Y

DAM B39
U184

ACT BW	79
ADJ WW	921
ADJ YW	1380
FRAME SC	5.7
ADG	2.9
WDA	3.8
ADJ SC	38.7

CE	BW	WW	YW	ADG	MCE	MILK	MWW	STAY	DDC	CW	YG	MARB	BF	REA	API	TI
19.5	-2.9	63.9	107.4	0.27	12.4	23.3	55.2	5.2	9.0	29.9	-0.15	0.47	0.001	0.72	158.1	76.1

- Destiny is a long, deep and thick Sim/Angus bull.
- Top 2% of the breed for calving ease.
- Ratios: 108 birth wt., 107 weaning wt., 104 yearling wt.
- Heifer bull numbers.
- Dam's a 3/4 blood first calf heifer.



LOT 26

27

RFS DIRECTOR D29

RYDEEN FARMS | Black | Polled | 3/8 SM 1/2 AN 1/8 CS | Bull
BD: 3/3/16 | Tattoo: D29 | ASA#: 3178500

SIRE CONNEALY WRANGLER
CONNEALY IRISH 0204
BLACK CREST OF CONANGA 5640
KBHR Y068 HARLEY

DAM B205
W21

ACT BW	98
ADJ WW	896
ADJ YW	1339
FRAME SC	6.0
ADG	2.8
WDA	3.7
ADJ SC	39.6

CE	BW	WW	YW	ADG	MCE	MILK	MWW	STAY	DDC	CW	YG	MARB	BF	REA	API	TI
11.9	1.4	70.0	113.5	0.27	8.7	20.1	55.1	7.7	13.1	39.8	-0.33	0.38	-0.062	0.91	130.9	74.9

- Director is good looking Sim/Angus bull that will add stretch.
- Top 20% of breed weaning wt., top 15% yearling wt.
- He will sire replacement females you will want to keep.



LOT 27

28

RFS DIVIDEND D56

RYDEEN FARMS | Hetero Black | Homo Polled | 1/4 SM 3/4 AN | GE-EPDs | Bull
BD: 3/11/16 | Tattoo: D56 | ASA#: 3178527

SIRE BENFIELD SUBSTANCE 8506
MOHNEN SUBSTANTIAL 272
MOHNEN GLYN MAWR ELBA 1758
HART FINAL ANSWER 0048

DAM RFS MISS BREE B111
RFS MISS Z124

ACT BW	80
ADJ WW	875
ADJ YW	1342
FRAME SC	5.9
ADG	3.0
WDA	3.7
ADJ SC	38.6

CE	BW	WW	YW	ADG	MCE	MILK	MWW	STAY	DDC	CW	YG	MARB	BF	REA	API	TI
19.0	-3.1	60.2	95.2	0.22	13.0	24.9	55.0	6.2	10.1	22.2	-0.06	0.65	0.014	0.46	166.3	77.8

- Dividend is a low birth wt. Sim/Angus herd bull prospect.
- Ranks in top 3% of breed for calving ease and API, top 5% maternal calving ease.
- Dam's a first calf heifer with great IMF scan data.



LOT 28



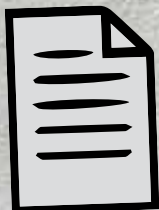
LOT 29



LOT 30



LOT 31



Ultrasound Information
Will Be Available Sale
Day and Online at

www.rydeenfarms.com

29

RFS DUEL D55

RYDEEN FARMS | Hetero Black | Homo Polled | 3/4 SM 1/4 AN | GE-EPDs | Bull
BD: 3/11/16 | Tattoo: D55 | ASA#: 3178526

SIRE TNT TANKER U263
TNT PUNCH Y260
TNT MISS T34
LCHMN BRIGHT LIGHT L122L

DAM RFS MISS Z10
X72

ACT BW	92
ADJ WW	948
ADJ YW	1479
FRAME SC	5.9
ADG	3.3
WDA	4.2
ADJ SC	42.6

CE	BW	WW	YW	ADG	MCE	MILK	MWW	STAY	DOC	CW	YG	MARB	BF	REA	API	TI
8.1	2.3	74.8	120.5	0.29	13.1	29.4	66.8	15.3	15.1	45.1	-0.27	0.14	-0.046	0.92	133.8	75.6

- Duel ranks in the top 2% of the breed for docility.
- Ranks in top 4% maternal calving ease, top 5% milk, top 2% maternal weaning wt.
- Keep the daughters.
- Dam's raised 3 calves, all below average birth wt., above average weaning and yearling wt.

30

RFS DUTY D6

RYDEEN FARMS | Homo Black | Homo Polled | 3/8 SM 5/8 AN | GE-EPDs | Bull
BD: 2/23/16 | Tattoo: D6 | ASA#: 3178477

SIRE BENFIELD SUBSTANCE 8506
MOHNEN SUBSTANTIAL 272
MOHNEN GLYN MAWR ELBA 1758

DAM TNT DUAL FOCUS T249
B66
W3

ACT BW	78
ADJ WW	847
ADJ YW	1223
FRAME SC	4.7
ADG	2.4
WDA	3.4
ADJ SC	39.7

CE	BW	WW	YW	ADG	MCE	MILK	MWW	STAY	DOC	CW	YG	MARB	BF	REA	API	TI
21.2	-3.7	54.6	82.8	0.18	11.8	23.8	51.1	7.0	11.1	13.9	-0.11	0.71	0.042	0.71	173.5	76.8

- Duty is a fantastic solid black Sim/Angus bull.
- Top 1% of breed for calving ease, 2% API, top 3% of breed birth wt.
- Top 5% of breed for marbling.
- Dam's a first calf, low birth wt. female with great scan data.

31

RFS DYNAMO D101

RYDEEN FARMS | Hetero Black | Homo Polled | PB SM | GE-EPDs | Bull
BD: 3/16/16 | Tattoo: D101 | ASA#: 3178572

SIRE MR NLC UPGRADE U8676
MCM TOP GRADE 018X
MCM 513R
RF BLK RUBY K58

DAM RF REPRESENT
SHOESTRING BIKS J109

ACT BW	98
ADJ WW	858
ADJ YW	1347
FRAME SC	6.5
ADG	3.1
WDA	3.8
ADJ SC	37.9

CE	BW	WW	YW	ADG	MCE	MILK	MWW	STAY	DOC	CW	YG	MARB	BF	REA	API	TI
7.5	2.1	64.6	96.6	0.20	12.2	23.2	55.5	10.4	9.5	30.4	-0.44	0.20	-0.085	0.95	122.1	70.7

- Dynamo is a long bodied Top Grade son.
- High weaning and yearling wts., will add pounds to calf crop.
- 12 year old dam weaned 10 calves in a 365 day interval.
- Maternal sib sells in the bred line up as Cherry C72, Lot 112.

32

RFS DUPLEX D172

RYDEEN FARMS | Hetero Black | Homo Polled | 1/2 SM 1/2 AN | GE-EPDs | Bull
BD: 4/2/16 | Tattoo: D172 | ASA#: 3178644

SIRE S CHISUM 6175
KNH SECURITY 258A
KNH MISS 58S
S A F EASY FORTUNE

DAM RF SOLITA S35
RF PLUMERIA

ACT BW	86
ADJ WW	938
ADJ YW	1411
FRAME SC	5.8
ADG	3.0
WDA	4.1
ADJ SC	40.8

CE	BW	WW	YW	ADG	MCE	MILK	MWW	STAY	DOC	CW	YG	MARB	BF	REA	API	TI
12.3	-0.4	65.4	107.2	0.26	12.5	26.4	59.1	9.3	10.6	33.5	0.02	0.53	0.009	0.31	146.3	77.0

- Duplex excels in maternal qualities.
- Ranks in the top 10% of the breed for maternal calving ease, top 15% API,
- Ratios: 106 birth, 109 weaning, 107 yearling wts.
- 11 year old dam weaned 9 calves with ratios: 105 (9) birth wt., 103 (9), yearling wt.

33

RFS DUDE D105

RYDEEN FARMS | Homo Black | Homo Polled | PB SM | GE-EPDs | Bull
BD: 3/17/16 | Tattoo: D105 | ASA#: 3178576

SIRE MR NLC UPGRADE U8676
MCM TOP GRADE 018X
MCM 513R
GW LUCKY BREAK 047G
DAM RFS MILLIE JANE
RFS CASS H28

ACT BW	80
ADJ WW	770
ADJ YW	1229
FRAME SC	5.0
ADG	2.9
WDA	3.5
ADJ SC	38.9

CE	BW	WW	YW	ADG	MCE	MILK	MWW	STAY	DOC	CW	YG	MARB	BF	REA	API	TI
11.2	-2.2	39.8	57.1	0.11	13.7	27.8	47.6	10.3	9.6	1.0	-0.47	0.27	-0.072	0.78	128.3	63.8

- Dude is solid black purebred with a low birth wt.
- Top 2% of breed birth wt., 10% maternal calving ease.
- Top 25% of breed for marbling.
- 14 year old dam weaned 12 calves with ratios 104 (12) birth wt.

35

RFS DAYTONA D73

RYDEEN FARMS | DLF Red | Homo Polled | PB SM | GE-EPDs | Bull
BD: 3/13/16 | Tattoo: D73 | ASA#: 3178544

SIRE GW REDESTINED 642X
RFS BULLETPROOF B42
RFS MISS Z119
WHEATLAND RED ACE 747T
DAM BBS MISS ACE Y3
BBS MISS GUNNER W3

ACT BW	85
ADJ WW	863
ADJ YW	1418
FRAME SC	5.5
ADG	3.5
WDA	4.0
ADJ SC	42.7

CE	BW	WW	YW	ADG	MCE	MILK	MWW	STAY	DOC	CW	YG	MARB	BF	REA	API	TI
12.5	0.8	70.3	100.1	0.19	10.6	17.7	52.9	9.4	11.2	30.3	-0.29	0.21	-0.046	0.80	129.7	75.1

- Daytona will put you on the fast track to success in your red program!
- Low birth wt., solid red, outcross, red herd bull.
- Dam's had 4 natural calves with ratios 104 (4) birth wt.
- Sire was the high seller in 2015 to Travis Beeson, SD.

36

RFS DARBY D119

RYDEEN FARMS | DLF Red | Hetero Polled | PB SM | GE-EPDs | Bull
BD: 3/19/16 | Tattoo: D119 | ASA#: 3178591

SIRE R PLUS HARD ROCK 145X
ELLINGSON COMPLETE A358
ELLINGSON MS AMIGO XS
TNT GUNNER N208
DAM X9
RF SISSY S12

ACT BW	97
ADJ WW	928
ADJ YW	1449
FRAME SC	6.0
ADG	3.3
WDA	4.1
ADJ SC	42.0

CE	BW	WW	YW	ADG	MCE	MILK	MWW	STAY	DOC	CW	YG	MARB	BF	REA	API	TI
7.6	3.9	79.0	107.3	0.18	13.0	15.2	54.7	10.3	11.6	38.6	-0.35	-0.09	-0.059	0.99	106.0	68.1

- Darby is powerful solid red purebred bull.
- Ratios: 106 weaning, 105 yearling wt.
- Dam always weans a tank.
- Maternal sib, Corinne C179 sells as bred Lot 105.

34

RFS DELIVER D27

RYDEEN FARMS | Black | Homo Polled | 3/4 SM 1/4 AN | GE-EPDs | Bull
BD: 3/3/16 | Tattoo: D27 | ASA#: 3178498

SIRE NICHOLS LEGACY G151
HOOKS SHEAR FORCE 38K
C&D TRACY
HART FINAL ANSWER 0048
DAM B202
RFS MISS Z71

ACT BW	82
ADJ WW	796
ADJ YW	1240
FRAME SC	4.8
ADG	2.8
WDA	3.4
ADJ SC	38.1

CE	BW	WW	YW	ADG	MCE	MILK	MWW	STAY	DOC	CW	YG	MARB	BF	REA	API	TI
18.0	-2.2	58.4	79.1	0.13	12.2	25.5	54.7	15.4	13.3	13.4	-0.42	0.49	-0.041	1.01	156.4	75.5

- Deliver is a low birth wt. Sim/Angus Shear Force son.
- Top 5% of breed calving ease, top 10% maternal calving ease and API.
- High maternal numbers.
- Dam's a first calf heifer, low birth wt. Sim/Angus.



LOT 35



LOT 36



37

RFS DELTA D122

RYDEEN FARMS

Red | Polled | PB SM | Bull
BD: 3/19/16 | Tattoo: D122 | ASA#: 3178594

SIRE **TNT 90 PROOF Z401**
TNT MISS S17
HOOKS SHEAR FORCE 38K

DAM **U26**
RF SEQUEL S159

ACT BW	94
ADJ WM	888
ADJ YW	1453
FRAME SC	6.0
ADG	3.5
WDA	4.1
ADJ SC	40.5

CE	BW	WW	YW	ADG	MCE	MILK	MWW	STAY	DOC	CW	YG	MARB	BF	REA	API	TI
10.8	1.9	75.9	114.1	0.24	11.9	24.7	62.7	13.6	12.5	40.4	-0.41	0.26	-0.042	1.33	140.7	79.8

- Delta is a great solid red herd bull prospect.
- Top 10% of breed for weaning and yearling wt.
- Great maternal package, ranks top 15 % of breed for API, and 4% TI.
- Dam's progeny ratios 103(7), birth wt., 101(7) weaning wt.



LOT 37

38

RFS DUDLEY D115

RYDEEN FARMS

DLF Red | Homo Polled | PB SM | GE-EPDs | Bull
BD: 3/18/16 | Tattoo: D115 | ASA#: 3178587

SIRE **ELLINGSON COMPLETE A358**
ELLINGSON MS AMIGO X5
TRAXS RUSHMORE X103

DAM **RFS MISS Z87**
RFS MICHELLE

ACT BW	94
ADJ WM	861
ADJ YW	1388
FRAME SC	6.0
ADG	3.3
WDA	3.9
ADJ SC	39.0

CE	BW	WW	YW	ADG	MCE	MILK	MWW	STAY	DOC	CW	YG	MARB	BF	REA	API	TI
10.3	2.8	73.0	101.9	0.18	12.0	12.7	49.2	11.4	13.0	34.1	-0.35	0.02	-0.058	0.93	117.8	68.9

- Dudley is a superb dark red, wonderful phenotype purebred.
- Top 15% of breed for weaning wt.
- Dam's weaned 3 natural calves in a 342 day interval.



LOT 38

39

RFS DUNCAN D133

RYDEEN FARMS

DLF Red | Homo Polled | PB SM | GE-EPDs | Bull
BD: 3/22/16 | Tattoo: D133 | ASA#: 3178605

SIRE **RFS BULLETPROOF B42**
RFS MISS Z119
LBR CROCKETT R81

DAM **RFS MISS T83**
RBS RF MINA

ACT BW	90
ADJ WM	786
ADJ YW	1229
FRAME SC	5.1
ADG	2.8
WDA	3.5
ADJ SC	40.2

CE	BW	WW	YW	ADG	MCE	MILK	MWW	STAY	DOC	CW	YG	MARB	BF	REA	API	TI
7.5	2.6	59.0	87.6	0.18	8.2	24.2	53.8	11.4	11.4	26.0	-0.37	0.18	-0.040	1.04	119.6	66.1

- Duncan is a solid red, blaze face fellow.
- His sire was the high seller in our 2015 sale.
- Dam's a 10 year blazed face.
- Maternal sib selling in the breds, Cathy C137, Lot 110.



LOT 39

40

RFS DEL RIO D23

RYDEEN FARMS

Red | Polled | PB SM | Bull
BD: 3/2/16 | Tattoo: D23 | ASA#: 3178494

SIRE **ELLINGSON COMPLETE A358**
ELLINGSON MS AMIGO X5
DCR MR HIGHLANDER X425

DAM **RFS MISS ALIGN A42**
X9

ACT BW	95
ADJ WM	845
ADJ YW	1450
FRAME SC	5.5
ADG	3.8
WDA	3.9
ADJ SC	40.6

CE	BW	WW	YW	ADG	MCE	MILK	MWW	STAY	DOC	CW	YG	MARB	BF	REA	API	TI
8.0	3.4	69.9	98.0	0.18	10.9	17.0	51.9	10.7	12.6	32.8	-0.35	0.07	-0.064	0.87	114.1	67.7

- Del Rio is solid red, deep bodied, long sided bull.
- Lots of growth, good maternal, calving ease.
- Dam and grand dam working in the herd.



LOT 40

41

RFS DOYLE D109

RYDEEN FARMS

DLF Red | Homo Polled | PB SM | GE-EPDs | Bull
BD: 3/17/16 | Tattoo: D109 | ASA#: 3178581

DCR MR MOON SHINE X102

SIRE TNT 90 PROOF Z401

TNT MISS S17

HOOKS SHEAR FORCE 38K

DAM W6

RFS MILLIE JANE

ACT BW	89
ADJ WW	885
ADJ YW	1386
FRAME SC	6.0
ADG	3.1
WDA	3.9
ADJ SC	41.4

CE	BW	WW	YW	ADG	MCE	MILK	MWW	STAY	DOC	CW	YG	MARB	BF	REA	API	TI
12.5	1.1	72.3	103.8	0.20	14.1	23.5	59.6	15.0	12.3	32.8	-0.38	0.23	-0.038	1.16	143.2	77.7

- Doyle is a dark cherry red herd bull.
- Balanced EPD's, top 5% of breed for maternal calving ease.
- Ranks in top 10% of breed for API and TI.
- Dam's a dark red, deep bodied female with ratios 104 (6) birth wt.



LOT 41

42

RFS DIXON D37

RYDEEN FARMS

DLF Red | Hetero Polled | PB SM | GE-EPDs | Bull
BD: 3/8/16 | Tattoo: D37 | ASA#: 3178508

HSF HIGH ROLLER 12T

SIRE WS HIGH STAKES W115

WS MISS DOLLY T10

HOOKS SHEAR FORCE 38K

DAM B28

LRS MS AXIS 246Z

ACT BW	82
ADJ WW	885
ADJ YW	1397
FRAME SC	5.9
ADG	3.2
WDA	3.7
ADJ SC	37.4

CE	BW	WW	YW	ADG	MCE	MILK	MWW	STAY	DOC	CW	YG	MARB	BF	REA	API	TI
17.5	-2.4	61.7	89.0	0.17	16.1	32.3	63.2	15.9	12.8	19.0	-0.44	0.21	-0.050	1.07	153.2	76.9

- Dixon is a solid red, deep sided, calving ease bull with a high API.
- Top 1% of breed for calving ease and birth wt.
- Keep his daughters! Top 2% of breed for Maternal Calving Ease and Milk.
- Dam's a first calf heifer.



LOT 42

43

RFS DECKER D44

RYDEEN FARMS

DLF Red | Homo Polled | PB SM | GE-EPDs | Bull
BD: 3/9/16 | Tattoo: D44 | ASA#: 3178515

R PLUS HARD ROCK 145X

SIRE ELLINGSON COMPLETE A358

ELLINGSON MS AMIGO X5

THSR BOMBARDIER U802

DAM RFS MISS APPLAUD A14

Y67

ACT BW	90
ADJ WW	903
ADJ YW	1430
FRAME SC	5.9
ADG	3.3
WDA	3.9
ADJ SC	41.5

CE	BW	WW	YW	ADG	MCE	MILK	MWW	STAY	DOC	CW	YG	MARB	BF	REA	API	TI
8.9	2.9	72.4	99.3	0.17	11.0	14.6	50.8	11.1	10.9	32.7	-0.37	-0.04	-0.074	0.86	111.4	66.8

- Decker is a powerful, deep bodied, dark red herd bull.
- Big time weaning, yearling wts.
- Grand dam is a maternal sib to RFS Red Iron at ABS.



LOT 43

44

RFS DETERMINED D159

RYDEEN FARMS

DLF Red | Homo Polled | PB SM | GE-EPDs | Bull
BD: 3/30/16 | Tattoo: D159 | ASA#: 3178631

R PLUS HARD ROCK 145X

SIRE ELLINGSON COMPLETE A358

ELLINGSON MS AMIGO X5

THSR BOMBARDIER U802

DAM RFS MISS ARKANSAS A13

Y142

ACT BW	90
ADJ WW	976
ADJ YW	1424
FRAME SC	5.5
ADG	2.8
WDA	3.9
ADJ SC	40.6

CE	BW	WW	YW	ADG	MCE	MILK	MWW	STAY	DOC	CW	YG	MARB	BF	REA	API	TI
9.9	2.2	72.6	101.1	0.18	13.6	18.0	54.3	12.3	11.2	32.7	-0.41	-0.09	-0.080	0.94	114.6	67.5

- Determined is a red purebred.
- Deep quarters, lots of guts, strong top line.
- Number 1 weaning wt. bull out of 34.
- Dam's a 2nd calf heifer, grand dam is working in the herd.



LOT 44



LOT 45

45

RFS DATA D53

RYDEEN FARMS

Red | Hetero Polled | PB SM | Bull
BD: 3/11/16 | Tattoo: D53 | ASA#: 3178524

SIRE **TNT 90 PROOF Z401**
TNT MISS S17
THSF FREEDOM 300N

DAM **RF SIERRA S17**
RF MISS L41

ACT BW	80
ADJ WW	792
ADJ YW	1263
FRAME SC	5.4
ADG	2.9
WDA	3.6
ADJ SC	41.6

CE	BW	WW	YW	ADG	MCE	MILK	MWW	STAY	DOC	CW	YG	MARB	BF	REA	API	TI
7.9	2.1	74.3	114.1	0.25	12.9	19.6	56.7	11.7	12.9	40.8	-0.42	0.07	-0.071	1.12	122.2	73.0

- Data has got the numbers!
- Top 10 % of breed for weaning, yearling wt., ADG and maternal calving ease.
- Low birth wt. twin to a heifer
- Dam died from a lightning strike in August, still adjusted just under 800 lb.



LOT 46

46

RFS DAZZLE D194

RYDEEN FARMS

DLF Red | Homo Polled | PB SM | GE-EPDs | Bull
BD: 4/14/16 | Tattoo: D194 | ASA#: 3178664

SIRE **ELLINGSON COMPLETE A358**
ELLINGSON MS AMIGO X5
35R

DAM **X154**
RFS MISS T67

ACT BW	95
ADJ WW	962
ADJ YW	
FRAME SC	6.2
ADG	3.1
WDA	4.2
ADJ SC	40.4

CE	BW	WW	YW	ADG	MCE	MILK	MWW	STAY	DOC	CW	YG	MARB	BF	REA	API	TI
7.3	3.9	76.5	104.0	0.17	11.3	19.6	57.8	10.6	12.0	36.6	-0.34	0.03	-0.058	0.93	111.7	69.9

- Dazzle is a dark cherry red, long bodied bull.
- Youngest bull in his class, 3rd highest adjusted weaning wt.
- Ranks in the top 10% of the breed for weaning wt.
- Dam weans the big ones, weaning wt. ratio 107(5).



LOT 47

47

RFS DELIVER D128

RYDEEN FARMS

DLF Red | Homo Polled | PB SM | GE-EPDs | Bull
BD: 3/20/16 | Tattoo: D128 | ASA#: 3178600

SIRE **TNT 90 PROOF Z401**
TNT MISS S17
HOOKS/KS SEQUOIA 355

DAM **KS MISS SEQUOIA X503**
KS RANA R323

ACT BW	95
ADJ WW	973
ADJ YW	1380
FRAME SC	6.3
ADG	2.5
WDA	4.0
ADJ SC	42.1

CE	BW	WW	YW	ADG	MCE	MILK	MWW	STAY	DOC	CW	YG	MARB	BF	REA	API	TI
7.7	4.5	81.3	116.6	0.22	11.6	25.4	66.0	14.3	11.4	45.3	-0.35	0.12	-0.047	1.17	126.5	75.4

- Deliver is a dark red, long spine 90 Proof son.
- Ranks in the top 2 % of the breed for weaning wt., maternal weaning wt.
- 2nd highest weaning wt. bull out of 34.
- Dam's a powerful red madam we purchased as a heifer from Kenner Ranch.



LOT 48

48

RFS DESIGN D81

RYDEEN FARMS

DLF Red | Homo Polled | PB SM | GE-EPDs | Bull
BD: 3/14/16 | Tattoo: D81 | ASA#: 3178552

SIRE **ELLINGSON COMPLETE A358**
ELLINGSON MS AMIGO X5
WHEATLAND RED TEDDY 457P

DAM **BBS TEDDY X10**
BBS MISS TOPGUN U228

ACT BW	90
ADJ WW	929
ADJ YW	1465
FRAME SC	7.0
ADG	3.3
WDA	4.1
ADJ SC	45.7

CE	BW	WW	YW	ADG	MCE	MILK	MWW	STAY	DOC	CW	YG	MARB	BF	REA	API	TI
8.1	3.3	78.2	112.4	0.21	10.2	15.7	54.7	9.7	9.4	41.1	-0.27	-0.03	-0.043	0.88	110.3	69.9

- Design is a great solid red, homo polled bull.
- Ranks in the top 5% of the breed for weaning wt.
- Ratios: 101 birth wt., 106 weaning wt., 106 yearling wt.
- Dam was purchased from Bata Bros. and does a fantastic job.

49 | RFS DISPATCH D103

RYDEEN FARMS

DLF Red | Homo Polled | PB SM | GE-EPDs | Bull
BD: 3/17/16 | Tattoo: D103 | ASA#: 3178574

DCR MR MOON SHINE X102

SIRE TNT 90 PROOF Z401

TNT MISS S17

THSR BOMBARDIER U802

DAM RFS MISS Z29

W6

ACT BW	88
ADJ WW	852
ADJ YW	1243
FRAME SC	5.3
ADG	2.5
WDA	3.5
ADJ SC	40.9

CE	BW	WW	YW	ADG	MCE	MILK	MWW	STAY	DOC	CW	YG	MARB	BF	REA	API	TI
11.4	1.0	61.5	83.4	0.14	14.1	20.5	51.3	15.9	11.1	20.6	-0.39	0.14	-0.049	0.95	133.9	68.3

- Dispatch is a solid deep red, low birth wt. 90 Proof son.
- Ranks in the top 5 % of the breed for maternal calving ease.
- Dam's an all red, brood cow that ratio's 104(3) birth wt.



LOT 49

50 | RFS DUAL D149

RYDEEN FARMS

DLF Red | Homo Polled | PB SM | GE-EPDs | Bull
BD: 3/26/16 | Tattoo: D149 | ASA#: 3178621

R PLUS HARD ROCK 145X

SIRE ELLINGSON COMPLETE A358

ELLINGSON MS AMIGO XS

RFS T46

DAM Z130

RBS RFS S 6

ACT BW	97
ADJ WW	948
ADJ YW	1497
FRAME SC	6.7
ADG	3.4
WDA	4.2
ADJ SC	39.4

CE	BW	WW	YW	ADG	MCE	MILK	MWW	STAY	DOC	CW	YG	MARB	BF	REA	API	TI
7.2	3.1	77.8	111.6	0.21	11.2	16.3	55.2	9.6	12.2	40.3	-0.37	-0.12	-0.066	1.02	104.4	68.0

- Dual is a long, deep sided Complete son.
- Ranks in the top 5% of the breed for weaning wt., top 10% yearling.
- Performance pedigree ratios: 108 weaning and 108 yearling wts.
- Dam is consistent, her 2016 herd bull went to Larry Nerhus, Goodridge, MN.



LOT 50

UNDERSTANDING EPDS

Expected Progeny Differences (EPDs): EPDs are the most accurate and effective tool available for comparing genetic levels. In using EPDs, the difference between two sires' EPDs represents the unit difference expected in the performance of their progeny. For example, if sires A and B have EPDs of +10 and -5, a 15-unit difference would be expected in their progeny (moving from -5 to +10 yields 15 units). Key to using EPDs is knowing in what units they are expressed. For example, if the above case referred to weaning weight EPDs, sire A would be expected to sire 15 pounds more weaning weight than sire B. If calving ease was the trait, sire A would be expected to sire 15 percent more unassisted births in first-calf heifers; in other words, if sire B sired 30 assists in a group of 100 heifers, we would expect sire A to require 15 assists. A percentile-ranking chart is required to determine where a bull's EPDs rank him relative to other bulls in the breed. For more detailed information about EPDs and \$ indexes, visit www.simmental.org. Listed below are the units in which ASA EPDs are expressed:

Calving Ease (CE): Percent of unassisted births when used on heifers.

Birth Weight (BW): Pounds of birth weight.

Weaning Weight (WW): Pounds of weaning weight.

Yearling Weight (YW): Pounds of yearling weight.

Maternal Calving Ease (MCE): Percent of unassisted births in first-calving daughters.

Milk (MLK): Pounds of weaning weight due to milk.

Maternal Weaning Weight (MWW): Pounds of weaning weight due to milk and growth.

Stayability (STAY): Percent of daughters remaining in the cowherd at six years of age.

Docility (DOC): Percent of offspring receiving a disposition score of 1 (docile).

Carcass Weight (CW): Pounds of carcass weight at 475 days.

Yield Grade (YG): Carcass yield grade score at 475 days.

Marbling (Marb): Carcass marbling score at 475 days.

Back Fat (BF): Inches of carcass back fat at 475 days.

Ribeye Area (REA): Square inches of carcass ribeye at 475 days.

Warner-Bratzler Shear Force (WBSF): Pounds of force required to shear a rib-eye steak.

All-Purpose Index (API): Dollars per cow exposed under an all-purpose-sire scenario. (See \$ Indexes for more details.)

Terminal Index (TI): Dollars per cow exposed under a terminal-sire scenario. (See TI for more details.)

\$ Indexes: Though EPDs allow for the comparison of genetic levels for many economically important traits, they only provide pieces of the economic puzzle. This is where \$ indexes come in. Through well-conceived, rigorous mathematical computation, \$ indexes blend EPDs and economics to estimate an animal's overall impact on integrated commercial production. The same technology that led to the dramatic progress in swine, poultry and dairy genetics over the last several decades was used to develop the following \$ indexes:

All-Purpose Index (API): Evaluates sires for use on the entire cow herd (bred to both Angus first-calf heifers and mature cows) with the portion of their daughters required to maintain herd size retained and the remaining heifers and steers put on feed and sold grade and yield.

Terminal Index (TI): Evaluates sires for use on mature Angus cows with all offspring put on feed and sold grade and yield.

Using API and TI: First, determine which index to use; if you are keeping replacements use API, if not, use TI. Then, just as with EPDs, zero in on the unit difference between bulls. (As described above, index units are in dollars per cow exposed.) The difference can be used to determine how much a bull is worth compared to another. Put another way, how much you can pay for one bull compared to another. For example, when buying an all-purpose-type sire, you can quickly figure a bull scoring +100 for API is worth an extra \$6,000 over a +50 bull if both are exposed to 30 cows over 4 years (\$50 diff. x 30 hd. x 4 yr.=\$6,000). A percentile-ranking chart is required to determine where a bull's index value ranks him relative to other bulls in the breed. For more detailed information about EPDs and \$ indexes, visit: www.simmental.org



LOT 51



LOT 52



LOT 53



LOT 54

51

RFS CADET C211

RYDEEN FARMS | Homo Black | Homo Polled | 1/2 SM 1/2 AN | GE-EPDs | Bull
BD: 8/29/15 | Tattoo: C211 | ASA#: 3121636

SIRE CONNEALY THUNDER
BALDRIDGE KABOOM K243 KCF
PARKA OF CONANGA 241
DIKEMANS SURE BET

DAM RFS MISS A211
RF ROSA

ACT BW	80
ACT WW	770
ACT WT 1/1/17	1380
FRAME SC	6.0
ACT SC	39.0

CE	BW	WW	YW	ADG	MCE	MILK	MWW	STAY	DOC	CW	YG	MARB	BF	REA	API	TI
14.3	-1.3	55.6	96.1	0.25	9.3	22.5	50.3	12.1	13.3	25.9	-0.22	0.66	-0.021	0.71	153.5	76.7

- Cadet is a wonderful, solid black Thunder fall born herd bull.
- Low birth wt., bull for use on cows or heifers.
- Dam's a 1st calf heifer.

52

RFS CARNIVAL C225

RYDEEN FARMS | Homo Black | Homo Polled | 1/2 SM 1/2 AN | Bull
BD: 9/4/15 | Tattoo: C225 | ASA#: 3121650

SIRE MOHNEN SUBSTANTIAL 272
BENFIELD SUBSTANCE 8506
MOHNEN GLYN MAWR ELBA 1758
DIKEMANS SURE BET

DAM RFS MISS A221
HSF/RF DIVA S618

ACT BW	80
ACT WW	920
ACT WT 1/1/17	1480
FRAME SC	6.0
ACT SC	41.0

CE	BW	WW	YW	ADG	MCE	MILK	MWW	STAY	DOC	CW	YG	MARB	BF	REA	API	TI
16.8	-1.4	77.5	113.2	0.22	11.5	20.8	59.6	7.0	10.4	34.7	-0.18	0.37	0.009	0.93	154.8	81.5

- Carnival is a super deep, wide topped Sim/Angus fall born bull.
- Ranks top 10% in breed for calving ease, top 5% in breed for weaning, top 10% API, TI.
- Dam is a beautiful Sure Bet 1st calf heifer.

53

RFS CANDIDATE C230

RYDEEN FARMS | Homo Black | Homo Polled | PB SM | GE-EPDs | Bull
BD: 9/8/15 | Tattoo: C230 | ASA#: 3121655

SIRE MCM TOP GRADE 018X
MR NLC UPGRADE U8676
MCM 513R

DAM HSF/RF DIVA S618
COTT-GFI FULLBACK 0038N
RF NEVA

ACT BW	90
ACT WW	935
ACT WT 1/1/17	1530
FRAME SC	6.0
ACT SC	42.0

CE	BW	WW	YW	ADG	MCE	MILK	MWW	STAY	DOC	CW	YG	MARB	BF	REA	API	TI
5.9	1.7	66.6	102.6	0.22	9.3	35.6	68.9	8.3	9.4	33.5	-0.35	0.31	-0.065	0.86	123.3	75.8

- Candidate is a big, stout, all black Top Grade fall born bull.
- Heavy weaning wt. bull, high IMF scan data—top 4%.
- Excellent maternal traits ranks in top 1% of breed for milk, and maternal weaning wt.
- Dam is performance bred, ranked top 1% of breed for weaning wt., 2% for yearling wt.

54

RFS CHARISMA C245

RYDEEN FARMS | Black | Homo Polled | 5/8 SM 3/8 AN | GE-EPDs | Bull
BD: 10/2/15 | Tattoo: C245 | ASA#: 3121679

SIRE KNH SECURITY 258A
S CHISUM 6175
KNH MISS 58S
TNT DUAL FOCUS T249

DAM RFS MISS Z36
W53

ACT BW	90
ACT WW	980
ACT WT 1/1/17	1555
FRAME SC	6.0
ACT SC	40.0

CE	BW	WW	YW	ADG	MCE	MILK	MWW	STAY	DOC	CW	YG	MARB	BF	REA	API	TI
10.2	2.4	82.7	133.4	0.32	10.4	22.8	64.1	8.7	11.8	52.9	0.08	0.18	0.045	0.64	118.4	74.2

- Charisma is a big, long wide-topped, deep quartered Security fall born son.
- Add pounds to the calf crop. Ranks top 2% of breed for weaning, yearling wts.
- Dam is a Z model Dual Focus with a great udder.

55

RFS CRUISER C226

RYDEEN FARMS

Black | Homo Polled | PB SM | GE-EPDs | Bull
BD: 9/4/15 | Tattoo: C226 | ASA#: 3121651

REMINGTON LOCK N LOAD54U

SIRE ES SURELOCK ZW15

ES W15

GFI MAGNUM K52

DAM RF PANDORA

RF MISS M34

ACT BW	90
ACT WW	865
ACT WT 1/1/17	1360
FRAME SC	6.0
ACT SC	44.0

CE	BW	WW	YW	ADG	MCE	MILK	MWW	STAY	DOC	CW	YG	MARB	BF	REA	API	TI
5.1	4.3	64.4	105.1	0.25	6.3	18.7	50.8	11.1	10.2	39.2	-0.25	0.41	-0.059	0.69	128.5	71.9

- Cruiser is a big black baldy Sure Lock son.
- High performance chrome head! Yes, and top 4% of the breed for IMF!
- Will produce fantastic females.



LOT 55

56

RFS CINCH C238

RYDEEN FARMS

Homo Black | Homo Polled | 3/4 SM 1/4 AN | GE-EPDs | Bull
BD: 9/15/15 | Tattoo: C238 | ASA#: 3121663

S CHISUM 6175

SIRE KNH SECURITY 258A

KNH MISS 58S

ELLINGSON LEGACY M229

DAM Y112

RF SILVIA S27

ACT BW	90
ACT WW	855
ACT WT 1/1/17	1475
FRAME SC	6.0
ACT SC	39.0

CE	BW	WW	YW	ADG	MCE	MILK	MWW	STAY	DOC	CW	YG	MARB	BF	REA	API	TI
11.7	0.9	67.3	115.5	0.30	11.2	23.0	56.7	8.1	11.8	40.6	-0.20	0.13	-0.046	0.63	114.7	67.5

- Cinch is solid black, with muscle deep into the quarter.
- Fall born bull.
- One of the best gaining Security sons.
- Dam is an Olie female—the kind we don't own enough of!



LOT 56

57

RFS CUSTER C213

RYDEEN FARMS

Hetero Black | Homo Polled | 1/2 SM 1/2 AN | Bull
BD: 8/30/15 | Tattoo: C213 | ASA#: 3121638

BENFIELD SUBSTANCE 8506

SIRE MOHNEN SUBSTANTIAL 272

MOHNEN GLYN MAWR ELBA 1758

RF DEWPOINT W78

DAM RFS MISS A222

X146

ACT BW	81
ACT WW	800
ACT WT 1/1/17	1390
FRAME SC	5.5
ACT SC	39.0

CE	BW	WW	YW	ADG	MCE	MILK	MWW	STAY	DOC	CW	YG	MARB	BF	REA	API	TI
18.9	-2.5	65.0	91.9	0.17	13.3	20.0	52.5	7.9	10.5	20.5	-0.20	0.67	-0.001	0.76	177.5	83.0

- Custer is a beautiful fall born Substantial herd bull.
- Top 3% calving ease, dual purpose cow and heifer bull.
- Also ranks in top 1% for API—keep all females!



LOT 57

58

RFS CAPTAIN C244

RYDEEN FARMS

Homo Black | Hetero Polled | 3/4 SM 1/4 AN | GE-EPDs | Bull
BD: 9/30/15 | Tattoo: C244 | ASA#: 3121670

S CHISUM 6175

SIRE KNH SECURITY 258A

KNH MISS 58S

HTP SVF IN DEW TIME

DAM U32

RF STARDUST E50

ACT BW	90
ACT WW	800
ACT WT 1/1/17	1330
FRAME SC	5.5
ACT SC	41.0

CE	BW	WW	YW	ADG	MCE	MILK	MWW	STAY	DOC	CW	YG	MARB	BF	REA	API	TI
13.8	-0.6	50.8	79.0	0.18	12.6	21.4	46.8	12.3	11.2	16.4	-0.22	0.15	-0.026	0.55	121.1	59.4

- Captain is a great solid black, fall born, ¾ blood Sim/Angus.
- Won't find them deeper or thicker.
- Dam is a peach of a cow, low birth wt. In Dew Time lady.



LOT 58

18 MONTH OLD BULLS



LOT 59



LOT 60



LOT 61



LOT 62

59 | RFS CHAMP C228

RYDEEN FARMS | Black | Homo Polled | 1/2 SM 1/2 AN | GE-EPDs | Bull
BD: 9/5/15 | Tattoo: C228 | ASA#: 3121653

SIRE MOHNEN SUBSTANTIAL 272
BENFIELD SUBSTANCE 8506
MOHNEN GLYN MAWR ELBA 1758

DAM RFS MISS A220
DIKEMANS SURE BET
Y116

ACT BW	80
ACT WW	815
ACT WT 1/1/17	1425
FRAME SC	5.5
ACT SC	41.0

CE	BW	WW	YW	ADG	MCE	MILK	MWW	STAY	DOC	CW	YG	MARB	BF	REA	API	TI
16.7	-1.4	59.8	104.5	0.28	10.8	22.4	52.3	8.2	11.3	30.7	-0.20	0.42	-0.005	0.83	150.6	73.7

- Champ is an excellent all black, deep sided Substantial Sim/Angus.
- Fall born bull.
- Nice EPD profile for use on cows or heifers.
- Dam is a very feminine Sure Bet 1st calf heifer.

60 | RFS CHIEF C214

RYDEEN FARMS | Homo Black | Homo Polled | 5/8 SM 3/8 AN | GE-EPDs | Bull
BD: 8/30/15 | Tattoo: C214 | ASA#: 3121639

SIRE TNT TUITION U238
S A V FINAL ANSWER 0035
TNT MISS S68

DAM W104
HTP SVF IN DEW TIME
RF PORTRAIT

ACT BW	78
ACT WW	790
ACT WT 1/1/17	1290
FRAME SC	5.5
ACT SC	38.0

CE	BW	WW	YW	ADG	MCE	MILK	MWW	STAY	DOC	CW	YG	MARB	BF	REA	API	TI
12.0	-0.7	58.5	80.1	0.13	7.5	7.5	36.8	8.0	7.9	16.2	-0.12	0.67	-0.017	0.33	145.0	74.3

- Chief is a long spine, smooth shoulder, clean fronted Sim/Angus.
- Fall born, low birth wt., calving ease bull.
- Ranks in top 10% of breed for marbling.
- Dam is a calving ease, low birth wt., In Dew Time cow.

61 | RFS COMMAND C215

RYDEEN FARMS | Hetero Black | Homo Polled | 1/4 SM 1/2 AN 1/4 CS | GE-EPDs | Bull
BD: 8/29/15 | Tattoo: C215 | ASA#: 3121640

SIRE TNT TUITION U238
S A V FINAL ANSWER 0035
TNT MISS S68

DAM W10
MYTTY IN FOCUS
T193

ACT BW	94
ACT WW	900
ACT WT 1/1/17	1470
FRAME SC	6.0
ACT SC	41.0

CE	BW	WW	YW	ADG	MCE	MILK	MWW	STAY	DOC	CW	YG	MARB	BF	REA	API	TI
11.7	0.4	67.4	112.5	0.28	4.2	19.4	53.0	6.6	10.2	37.9	-0.05	0.56	-0.014	0.41	133.8	77.7

- Command is a solid black, smooth, deep sided herd bull.
- Clean fronted fall born bull.
- Dam has a great udder, moderate framed Mytty In Focus cow.

62 | RFS CADET C218

RYDEEN FARMS | Homo Black | Homo Polled | 1/2 SM 1/2 AN | GE-EPDs | Bull
BD: 9/2/15 | Tattoo: C218 | ASA#: 3121643

SIRE CONNEALY THUNDER
BALDRIDGE KABOOM K243 KCF
PARKA OF CONANGA 241

DAM RFS MISS A217
KBHR Y068 HARLEY
W35

ACT BW	86
ACT WW	725
ACT WT 1/1/17	1375
FRAME SC	5.5
ACT SC	40.0

CE	BW	WW	YW	ADG	MCE	MILK	MWW	STAY	DOC	CW	YG	MARB	BF	REA	API	TI
12.8	0.3	59.8	103.1	0.27	8.7	20.8	50.7	11.7	13.6	32.4	-0.24	0.36	-0.015	0.93	130.9	69.6

- Cadet is a fall born, Connealy Thunder herd bull prospect.
- Will add pounds to your calf crop—top 15% for ADG and top 10% docility.
- Dam is a KBHR Harley 1st calf heifer.

63

RFS CANYON C224

RYDEEN FARMS | DLF Red | Hetero Polled | 1/2 SM 1/4 CS 1/4 MX | GE-EPDs | Bull
BD: 9/3/15 | Tattoo: C224 | ASA#: 3121649

SIRE R PLUS HARD ROCK 145X
ELLINGSON COMPLETE A358
ELLINGSON MS AMIGO XS

DAM P40

ACT BW	90
ACT WW	995
ACT WT 1/1/17	1510
FRAME SC	6.0
ACT SC	42.0

CE	BW	WW	YW	ADG	MCE	MILK	MWW	STAY	DOC	CW	YG	MARB	BF	REA	API	TI
8.9	2.3	68.8	91.6	0.14	5.2	16.2	50.6	3.7		27.1	-0.19	-0.13	-0.052	0.40	80.9	57.3

- Canyon is long bodied, dark red, fall born Complete son with button scur.
- One of the highest weaning wt. bulls in fall program.
- Dam is a great red Sim/Angus cow.



LOT 63

64

RFS COLUMBUS C240

RYDEEN FARMS | Homo Black | Homo Polled | 1/4 SM 3/4 AN | Bull
BD: 9/17/15 | Tattoo: C240 | ASA#: 3121666

SIRE S CHISUM 6175
KNH SECURITY 258A
KNH MISS 58S

DAM L3

ACT BW	87
ACT WW	835
ACT WT 1/1/17	1435
FRAME SC	6.0
ACT SC	41.0

CE	BW	WW	YW	ADG	MCE	MILK	MWW	STAY	DOC	CW	YG	MARB	BF	REA	API	TI
10.2	0.5	54.6	93.5	0.24	6.5	29.4	56.7	3.4		27.1	-0.05	0.45	-0.015	0.25	114.0	64.8

- Columbus is a moderate framed, low birth wt. Sim/Angus fall born bull.
- Dam weaned 11 calves at Rydeen Farms.
- Keep his daughters, they pay the bills.

65

RFS COMPLEX C237

RYDEEN FARMS | Hetero Black | Homo Polled | PB SM | GE-EPDs | Bull
BD: 9/12/15 | Tattoo: C237 | ASA#: 3121662

SIRE MR NLC UPGRADE U8676
MCM TOP GRADE 018X
MCM 513R

DAM GFI RAMBLER J114
RF MISS RAM P282
ROCKY HILLS FIGI

ACT BW	98
ACT WW	950
ACT WT 1/1/17	1550
FRAME SC	6.5
ACT SC	43.0

CE	BW	WW	YW	ADG	MCE	MILK	MWW	STAY	DOC	CW	YG	MARB	BF	REA	API	TI
7.5	2.2	70.3	114.5	0.28	10.3	24.9	60.1	9.8	10.3	41.6	-0.44	0.30	-0.065	1.25	130.6	77.5

- Complex is a fall born black Top Grade son.
- Ranks in top 2% of breed for ADG.
- One of the highest weaning and yearling wt. bulls in the fall program.

66

RFS COUNCIL C229

RYDEEN FARMS | Black | Homo Polled | PB SM | GE-EPDs | Bull
BD: 9/6/15 | Tattoo: C229 | ASA#: 3121654

SIRE REMINGTON LOCK N LOAD54U
ES SURELOCK ZW15
ES W15

DAM MR NLC SUPERIOR S6018
X26
GFI MISS BW J191

ACT BW	92
ACT WW	895
ACT WT 1/1/17	1450
FRAME SC	5.5
ACT SC	40.0

CE	BW	WW	YW	ADG	MCE	MILK	MWW	STAY	DOC	CW	YG	MARB	BF	REA	API	TI
4.5	4.2	70.1	121.1	0.32	5.5	17.7	52.7	11.4	11.3	48.9	-0.38	0.17	-0.062	1.19	119.8	70.4

- Council is a solid black Sure Lock fall born son.
- Performance bull, very good IMF scan data.
- Top 1% of breed for ADG.
- Dam is a moderate NLC Superior daughter with a great disposition.



18 MONTH OLD BULLS



LOT 67



LOT 68



LOT 69



LOT 70

67 | RFS CREW C184

RYDEEN FARMS

DLF Red | Homo Polled | PB SM | Bull
BD: 5/23/15 | Tattoo: C184 | ASA#: 3040753

SIRE **ELLINGSON COMPLETE A358**
R PLUS HARD ROCK 145X
ELLINGSON MS AMIGO X5

DAM **U206**
BBS PHALTLINE P5
RBS RENE N15

ACT BW	90
ADJ WW	940
ACT WT 1/12/17	1660
FRAME SC	6.0
ACT SC	41.0

CE	BW	WW	YW	ADG	MCE	MILK	MWW	STAY	DOC	CW	YG	MARB	BF	REA	API	TI
10.0	2.6	78.7	104.3	0.16	10.3	12.4	51.8	8.0	9.2	34.8	-0.27	0.04	-0.064	0.66	112.7	72.2

- Crew is a dark cherry red Complete 2 year old.
- Ranked top 4% of breed for weaning wt.
- Dam raises the best-her 2015 Authority son went to DeBoer Farms, SD.

68 | RFS CARLOS C10

RYDEEN FARMS

DLF Red | Homo Polled | PB SM | Bull
BD: 3/5/15 | Tattoo: C10 | ASA#: 3040582

SIRE **WS HIGH STAKES W115**
HSF HIGH ROLLER 12T
WS MISS DOLLY T10

DAM **RFS MISS AMARETTO A166**
RFS T46
RF SONG S43

ACT BW	81
ADJ WW	809
ACT WT 1/12/17	1685
FRAME SC	6.0
ACT SC	45.5

CE	BW	WW	YW	ADG	MCE	MILK	MWW	STAY	DOC	CW	YG	MARB	BF	REA	API	TI
13.6	-1.5	51.2	81.9	0.19	15.9	28.0	53.6	13.4	12.7	16.9	-0.42	-0.13	-0.072	0.83	120.5	60.6

- Carlos is a deep, dark red, long bodied High Stakes 2 year old bull.
- Top 4 % of breed for birth wt. top 2% for maternal calving ease.
- Great maternal bull—daughters will calve easy and milk.

69 | RFS COMPUTE C129

RYDEEN FARMS

Hetero Black | Homo Polled | 1/4 SM 3/4 AN | Bull
BD: 4/10/15 | Tattoo: C129 | ASA#: 3040700

SIRE **HART FINAL ANSWER 0048**
S A V FINAL ANSWER 0035
HART BLACKCAP MAID 8114

DAM **RFS MISS ALUMNI A78**
HART FINAL ANSWER 0048
Y109

ACT BW	88
ADJ WW	906
ACT WT 1/12/17	1630
FRAME SC	5.5
ACT SC	42.0

CE	BW	WW	YW	ADG	MCE	MILK	MWW	STAY	DOC	CW	YG	MARB	BF	REA	API	TI
13.6	0.7	76.7	112.1	0.22	11.0	19.1	57.5	10.4	11.5	37.1	-0.08	0.47	-0.004	0.55	137.5	77.2

- Compute is a hetero black Sim/Angus 2 year old bull.
- Ranked in top 10% of breed for weaning wt.
- Dam is a very feminine, clean front female.

70 | RFS CARSON C13

RYDEEN FARMS

DLF Red | Homo Polled | PB SM | Bull
BD: 3/7/15 | Tattoo: C13 | ASA#: 3040585

SIRE **WS HIGH STAKES W115**
HSF HIGH ROLLER 12T
WS MISS DOLLY T10

DAM **RFS MISS ADVENTURE A128**
RFS T46
U109

ACT BW	80
ADJ WW	745
ACT WT 1/12/17	1650
FRAME SC	5.5
ACT SC	43.0

CE	BW	WW	YW	ADG	MCE	MILK	MWW	STAY	DOC	CW	YG	MARB	BF	REA	API	TI
14.0	-1.6	41.0	66.1	0.16	12.7	28.5	49.0	12.4	11.6	7.5	-0.45	0.01	-0.076	0.77	122.9	58.3

- Carson is a solid red, deep bodied High Stakes 2 year old.
- Calving ease, low birth specialist, ranked top 3% of breed for birth wt.
- Use on cows or heifers.

71

RFS CHICO C119

RYDEEN FARMS

Homo Black | Homo Polled | 1/2 SM 1/2 AN | Bull
BD: 4/4/15 | Tattoo: C119 | ASA#: 3040690

SA V FINAL ANSWER 0035

SIRE HART FINAL ANSWER 0048

HART BLACKCAP MAID 8114

KBHR Y068 HARLEY

DAM RFS MISS ALASKA A95

U102

ACT BW	90
ADJ WW	831
ACT WT 1/12/17	1610
FRAME SC	6.0
ACT SC	42.0

CE	BW	WW	YW	ADG	MCE	MILK	MWW	STAY	DOC	CW	YG	MARB	BF	REA	API	TI
11.0	2.0	71.8	107.2	0.22	5.3	19.5	55.4	11.0	11.6	36.5	-0.16	0.29	-0.029	0.58	117.8	71.3

- Chico is a homo black, long bodied, clean fronted 2 year old.
- Sim/Angus 1/2 blood will wean the heavy ones.
- Dam is a KBHR Harley X Cruiser performance pedigree.



LOT 71

72

RFS CHRYSLER C36

RYDEEN FARMS

DLF Red | Hetero Polled | PB SM | Bull
BD: 3/18/15 | Tattoo: C36 | ASA#: 3040605

BH TRACKER 998J

SIRE THSF FREEDOM 300N

SAFN MISS ZING 02H

TNT GUNNER N208

DAM Y54

RF PRECISE

ACT BW	90
ADJ WW	873
ACT WT 1/12/17	1830
FRAME SC	6.0
ACT SC	45.0

CE	BW	WW	YW	ADG	MCE	MILK	MWW	STAY	DOC	CW	YG	MARB	BF	REA	API	TI
7.3	1.6	62.6	93.8	0.19	15.2	18.5	49.8	11.1	12.7	28.1	-0.40	-0.11	-0.061	0.98	106.2	61.7

- Chrysler is a big, long sided Freedom 2 year old.
- Daughters will calve easy and be excellent cows.
- Ranks in the top 2% of the breed for maternal calving ease.
- Dam is a big bodied, level udder, solid red TNT Gunner cow.



LOT 72

2 YEAR OLD BULLS

73

RFS CHESTER C27

RYDEEN FARMS

Black | Polled | PB AN | Bull
BD: 3/17/15 | Tattoo: C27 | ASA#: 3049434

SA V FINAL ANSWER 0035

SIRE HART FINAL ANSWER 0048

HART BLACKCAP MAID 8114

SA V IRON MOUNTAIN 8066

DAM CSA SECOND CHANCE 3044

CSA SECOND CHANCE 754

ACT BW	80
ADJ WW	800
ACT WT 1/12/17	1670
FRAME SC	5.5
ACT SC	39.0

CE	BW	WW	YW	ADG	MCE	MILK	MWW	STAY	DOC	CW	YG	MARB	BF	REA	API	TI
13.8	-0.8	69.0	116.1	0.29	8.8	17.9	52.4	7.4	11.6	38.3	0.06	0.91	0.022	0.33	144.9	78.5

- Chester is a purebred Angus, Hart Final Answer 2 year old.
- Calving ease, low birth wt., and ranked in the top 1% for marbling.
- Dam is a low birth wt., SAV Iron Mountain lady.



LOT 73

74

RFS CHASE C124

RYDEEN FARMS

DLF Red | Homo Polled | PB SM | Bull
BD: 4/8/15 | Tattoo: C124 | ASA#: 3040695

R PLUS HARD ROCK 145X

SIRE ELLINGSON COMPLETE A358

ELLINGSON MS AMIGO XS

35R

DAM X154

RFS MISS T67

ACT BW	98
ADJ WW	884
ACT WT 1/12/17	1780
FRAME SC	6.0
ACT SC	46.0

CE	BW	WW	YW	ADG	MCE	MILK	MWW	STAY	DOC	CW	YG	MARB	BF	REA	API	TI
8.0	3.4	70.0	101.5	0.20	11.3	21.8	56.8	10.6	12.0	35.0	-0.35	0.15	-0.056	0.97	119.2	70.6

- Chase is a 6 frame solid red, homo polled Complete son.
- 2 year old bull that will pack pounds on your next calf crop.
- Dam is a Radar cow with great maternal traits.

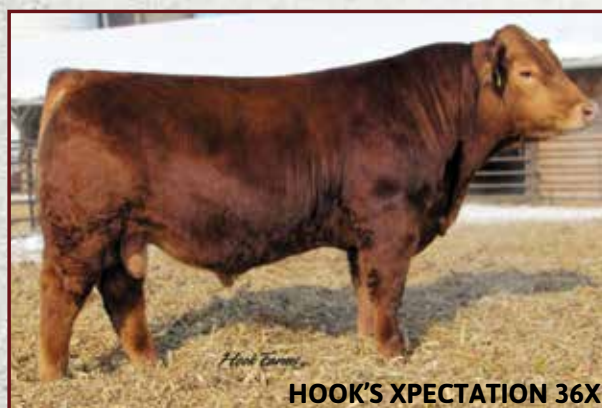


LOT 74

REFERENCE SIRES



CLRS CONSTITUTION 311 C



HOOK'S XPECTATION 36X



ELLINGSON COMPLETE A358



TNT DUAL FOCUS T249

PUREBRED SIMMENTAL REFERENCE SIRES

Name	ASA #	Sire x Dam	CE	BW	WW	YW	MCE	ADG	MILK	MWW	API	TI
Hart's Warsaw 003B	2843234	Welsh's Warsaw 312Z x Hart Miss 371Z	12.4	0.1	66.9	88.2	10	0.13	19	52.5	139.3	73

PUREBRED ANGUS REFERENCE SIRES

Name	ASA #	Sire x Dam	CE	BW	WW	YW	MCE	ADG	MILK	MWW	API	TI
Hart Checkmark 4117	3025534	Connealy Checkmark x Hart Misti 7017	18.8	-2.6	67.8	116.8	12.3	0.31	30.3	64.1	152.7	84.9

SIMANGUS REFERENCE SIRES

Name	ASA #	Sire x Dam	CE	BW	WW	YW	MCE	ADG	MILK	MWW	API	TI
CLRS Constitution 311C	2984470	J Bar J Nightride 225Z x CLRS Aid Xcellence 311 A	18.2	-2.6	74.1	127.2	10.1	0.33	18.6	55.7	191.1	97.6
Hook's Xpectation 36X	2559346	GW Predestined 701T x Hooks Mika 141M	16.8	-4.1	58.5	78.6	10	0.13	27.9	57.1	157.1	80

75 | RFS MISS CHARLOTTE C39

RYDEEN FARMS

Black | Polled | 3/4 SM 1/4 AN | Cow

BD: 3/19/15 | Tattoo: C39 | ASA#: 3040608 | Adj. BW: 85 | Adj. WW: 726

SIRE MYTTY IN FOCUS
TNT DUAL FOCUS T249
 TNT MISS R77

DAM PVF-BF BF26 BLACK JOKER
RFS MADELINE
 RFS LATTE G41

PROJECTED EPDS	
CE	15.2
BW	-1.4
WW	67.5
YW	108.9
MCE	9.5
MILK	18.9
MWW	52.7

CE	BW	WW	YW	ADG	MCE	MILK	MWW	STAY	DDC	CW	YG	MARB	BF	REA	API	TI
12.1	-0.1	60.9	90.6	0.19	8.8	19.1	49.6	12.7	10.9	23.7	-0.26	0.37	-0.044	0.64	134.0	69.7

- Black, blazed face Dual Focus.
- Deep bodied, lots of eye appeal.
- Dam at 15, weaned her 13th calf in fall 2016, maintaining a 366 day interval.
- Ultrasound safe to AI date for early March heifer calf.
- AI'd on 5/26/16 to Constitution, PE to Constitution from 6/14-7/26.



LOT 75

76 | RFS MISS CHARITY C158

RYDEEN FARMS

Black | Polled | PB SM | Cow

BD: 4/28/15 | Tattoo: C158 | ASA#: 3040728 | Adj. BW: 92 | Adj. WW: 740

SIRE HTP SVF IN DEW TIME
RF DEWPOINT W78
 RF MISS N97

DAM TNT TANKER U263
RFS MISS Z47
 RFS MISS M160

PROJECTED EPDS	
CE	13.5
BW	-0.3
WW	72.8
YW	113.0
MCE	10.6
MILK	20.5
MWW	56.9

CE	BW	WW	YW	ADG	MCE	MILK	MWW	STAY	DDC	CW	YG	MARB	BF	REA	API	TI
8.7	2.1	71.5	98.7	0.17	11.1	22.4	58.1	13.8	9.9	31.1	-0.37	0.06	-0.060	0.94	123.5	70.7

- Black, feminine fronted, Dewpoint lady.
- Dam's a hard working Tanker.
- Maternal sister B8 (bred) sold to Erik Finney, Lancaster, 2016.
- Ultrasound safe to AI date for early March bull calf.
- AI'd on 5/26/16 to Constitution, PE to Constitution from 6/14-7/26



LOT 76

77 | RFS MISS CAROLINE C89

RYDEEN FARMS

Black | Polled | 3/4 SM 1/4 AN | Cow

BD: 3/23/15 | Tattoo: C89 | ASA#: 3040659 | Adj. BW: 91 | Adj. WW: 835

SIRE MYTTY IN FOCUS
TNT DUAL FOCUS T249
 TNT MISS R77

DAM TNT TANKER U263
RFS MISS Z71
 RF MISS J82

PROJECTED EPDS	
CE	14.7
BW	-0.6
WW	74.7
YW	120.5
MCE	11.3
MILK	20.6
MWW	57.9

CE	BW	WW	YW	ADG	MCE	MILK	MWW	STAY	DDC	CW	YG	MARB	BF	REA	API	TI
11.1	1.4	75.3	113.7	0.24	12.5	22.5	60.1	14.5	11.4	39.4	-0.20	0.23	-0.003	0.97	132.0	73.2

- Beautiful brood cow in the making.
- Great scan data, start a herd with this gal!
- Ultrasound predicts April calf.
- AI'd on 5/26/16 to Constitution, PE to Constitution from 6/14-9/1/16



LOT 77

78 | RFS MISS CYNTHIA C23

RYDEEN FARMS

Black | Polled | PB SM | Cow

BD: 3/16/15 | Tattoo: C23 | ASA#: 3040593 | Adj. BW: 90 | Adj. WW: 784

SIRE MR NLC UPGRADE U8676
SVF ALLEGIANCE Y802
 DOUBLE R MISS 29G T18

DAM MR NLC SUPERIOR S6018
X51
 RFS ISABELLA H86

PROJECTED EPDS	
CE	12.9
BW	-0.2
WW	76.2
YW	121.1
MCE	9.5
MILK	18.7
MWW	56.8

CE	BW	WW	YW	ADG	MCE	MILK	MWW	STAY	DDC	CW	YG	MARB	BF	REA	API	TI
7.6	2.3	78.2	115.0	0.23	8.9	18.7	57.8	9.0	12.7	41.3	-0.32	0.07	-0.041	1.05	116.5	74.3

- Long sided, clean fronted Allegiance bred.
- One of the top weaning and yearling wt. bred females
- Dam raised a great Robust daughter, Darcy D36, Lot 116 in our open group.
- Ultrasound predicts March calf.
- AI'd on 5/26/16 to Constitution, PE to Constitution from 6/14-7/26



LOT 78



LOT 79



LOT 80



LOT 81



LOT 82

79 | RFS MISS COURTNEY C104

RYDEEN FARMS

Black | Polled | 3/4 SM 1/4 AN | Cow

BD: 3/30/15 | Tattoo: C104 | ASA#: 3040674 | Adj. BW: 88 | Adj. WW: 649

SIRE DIKEMANS SURE BET
TJ SHARPER IMAGE 809U
T J MISS BANDO S27
GFI RAMBLER J114

DAM RF PEPPY
RFS LEOTA H127

PROJECTED EPDS	
CE	14.1
BW	-0.6
WW	68.8
YW	113.0
MCE	10.5
MILK	18.8
MWW	53.2

CE	BW	WW	YW	ADG	MCE	MILK	MWW	STAY	DDC	CW	YG	MARB	BF	REA	API	TI
9.9	1.5	63.5	98.8	0.22	10.8	18.9	50.7	13.8	13.6	31.0	-0.15	0.29	-0.023	0.53	128.1	67.0

- Beautiful, solid black Sharper Image ¾ blood.
- Great individual IMF scan data.
- Maternal Tanker brother sold to Breuers, ND in 2016.
- Ultrasound safe to AI date for early March heifer calf.
- AI'd on 5/26/16 to Constitution, PE to Constitution from 6/14-7/26

80 | RFS MISS CHLOE C43

RYDEEN FARMS

Black | Polled | 3/4 SM 1/4 AN | Cow

BD: 3/19/15 | Tattoo: C43 | ASA#: 3040613 | Adj. BW: 81 | Adj. WW: 710

SIRE B/R NEW FRONTIER 095
GLS COMBINATION R2
GLS HOSTESS H16
ELLINGSON LEGACY M229

DAM Y34
RF SOFIA S13

PROJECTED EPDS	
CE	15.5
BW	-1.3
WW	65.5
YW	108.7
MCE	9.6
MILK	20.3
MWW	53.1

CE	BW	WW	YW	ADG	MCE	MILK	MWW	STAY	DDC	CW	YG	MARB	BF	REA	API	TI
12.8	0.1	56.8	90.2	0.21	9.0	22.0	50.4	10.0	11.3	24.1	-0.37	0.39	-0.056	0.87	131.2	69.1

- Moderate framed, all black ¾ blood.
- Low birth wt., high marbling female.
- Ultrasound predicts April calf.
- AI'd on 5/26/16 to Constitution, PE to Constitution from 6/14-9/1/16

81 | RFS MISS CHRISSY C62

RYDEEN FARMS

Black | Polled | PB SM | Cow

BD: 3/20/15 | Tattoo: C62 | ASA#: 3040632 | Adj. BW: 89 | Adj. WW: 751

SIRE 3C W/C RIGHT TRACK W9462
W/C WIDE TRACK 694Y
MISS WERNING 694S
ELLINGSON RIGHT ON W944

DAM RFS MISS Z71
RF SESAME S164

PROJECTED EPDS	
CE	12.5
BW	0.4
WW	73.8
YW	120.8
MCE	6.8
MILK	19.6
MWW	56.5

CE	BW	WW	YW	ADG	MCE	MILK	MWW	STAY	DDC	CW	YG	MARB	BF	REA	API	TI
6.7	3.3	73.5	114.4	0.26	3.4	20.5	57.3	15.5	10.9	42.9	-0.31	0.17	-0.072	0.80	131.1	73.1

- Smaller framed, solid black Wide Track bred.
- Nice individual weaning and yearling performance.
- Dam has a maternal sib, yearling bull, Dublin D86, Lot 18.
- Ultrasound predicts March calf.
- AI'd on 6/14/16 to Constitution, PE to Constitution from 6/14-7/26

82 | RFS MISS CHELSEA C105

RYDEEN FARMS

Black | Polled | PB SM | Cow

BD: 3/30/15 | Tattoo: C105 | ASA#: 3040675 | Adj. BW: 86 | Adj. WW: 727

SIRE MR NLC UPGRADE U8676
MCM TOP GRADE 018X
MCM 513R
LBR CROCKETT R81

DAM RFS MISS T86
RF MISS J159

PROJECTED EPDS	
CE	11.7
BW	-0.3
WW	69.3
YW	114.8
MCE	9.6
MILK	21.8
MWW	56.5

CE	BW	WW	YW	ADG	MCE	MILK	MWW	STAY	DDC	CW	YG	MARB	BF	REA	API	TI
5.1	2.0	64.4	102.4	0.24	9.0	25.0	57.2	8.2	10.5	34.1	-0.37	0.47	-0.039	1.15	130.5	77.4

- Wonderful, solid black Top Grade gal.
- Scanned like a champ! Ratios: 104 US wt., 116 IMF, 120 BF, 100 REA.
- Full brother is a standout Top Grade son, Dart D100 Lot 7.
- Ultrasound predicts March calf.
- AI'd on 5/27/16 to Constitution, PE to Constitution from 6/14-7/26

83 | RFS MISS CHRISTINE C165

RYDEEN FARMS Black | Polled | 1/2 SM 1/2 AN | Cow
 BD: 5/2/15 | Tattoo: C165 | ASA#: 3040735 | Adj. BW: 84 | Adj. WW: 700

SIRE **RF DEWPOINT W78**
 HTP SVF IN DEW TIME
 RF MISS N97

DAM **PAR 616 EXAMPLE**

PROJECTED EPDS	
CE	14.4
BW	-1.0
WW	68.8
YW	108.9
MCE	7.7
MILK	20.1
MWW	54.5

CE	BW	WW	YW	ADG	MCE	MILK	MWW	STAY	DOC	CW	YG	MARB	BF	REA	API	TI
10.5	0.7	63.4	90.5	0.17	5.2	21.5	53.2	7.1		24.6	-0.24	0.15	-0.057	0.47	109.3	64.5

- Moderate sized Sim/Angus bred.
- Dam is a 616 Angus cow.
- Ultrasound safe to AI date for early March bull calf.
- AI'd on 5/28/16 to Constitution, PE to Constitution from 6/14-7/26



LOT 83

84 | RFS MISS CAMILLE C24

RYDEEN FARMS Black | Polled | 1/4 SM 3/4 AN | Cow
 BD: 3/16/15 | Tattoo: C24 | ASA#: 3040594 | Adj. BW: 82 | Adj. WW: 683

SIRE **HART FINAL ANSWER 0048**
 S A V FINAL ANSWER 0035
 HART BLACKCAP MAID 8114

DAM **RFS MISS AGREE A83**
 HART FINAL ANSWER 0048
 Y1

PROJECTED EPDS	
CE	16.8
BW	-1.6
WW	71.8
YW	113.3
MCE	9.9
MILK	20.3
MWW	56.3

CE	BW	WW	YW	ADG	MCE	MILK	MWW	STAY	DOC	CW	YG	MARB	BF	REA	API	TI
15.4	-0.6	69.5	99.3	0.19	9.6	22.0	56.8	9.9	11.5	27.7	-0.04	0.88	-0.013	0.24	161.8	84.6

- Solid black, long bodied Hart Final Answer bred.
- Ranks in top 1% of breed for marbling, top 5% of breed for API and top 4% TI.
- Ultrasound safe to AI date for early March heifer calf.
- AI'd on 5/26/16 to Constitution, PE to Constitution from 6/14-7/26



LOT 84

85 | RFS MISS CELESTE C63

RYDEEN FARMS Black | Polled | 3/4 SM 1/4 AN | Cow
 BD: 3/20/15 | Tattoo: C63 | ASA#: 3040633 | Adj. BW: 85 | Adj. WW: 759

SIRE **TNT PUNCH Y260**
 TNT TANKER U263
 TNT MISS T34

DAM **U80**
 GFI RAMBLER J114
 RFS MADELINE

PROJECTED EPDS	
CE	12.7
BW	-0.6
WW	71.1
YW	118.0
MCE	12.4
MILK	20.2
MWW	55.8

CE	BW	WW	YW	ADG	MCE	MILK	MWW	STAY	DOC	CW	YG	MARB	BF	REA	API	TI
7.2	1.4	68.0	108.8	0.26	14.6	21.8	55.8	14.6	13.5	36.9	-0.29	0.11	-0.037	0.95	128.6	71.1

- Super, deep sided, high volume female.
- Low birth wt., high weaning wt., and yearling wt. numbers.
- Dam wean ratios 103(7).
- Ultrasound predicts April calf.
- AI'd on 5/26/16 to Constitution, PE to Constitution from 6/14-9/1/16



LOT 85

86 | RFS MISS CLAUDIA C186

RYDEEN FARMS Black | Polled | 3/4 SM 1/4 AN | Cow
 BD: 5/25/15 | Tattoo: C186 | ASA#: 3040755 | Adj. BW: 89 | Adj. WW: 690

SIRE **KNH SECURITY 258A**
 S CHISUM 6175
 KNH MISS 585

DAM **Y176**
 ELLINGSON RIGHT ON W944
 RFS MISS T90

PROJECTED EPDS	
CE	13.8
BW	-0.6
WW	67.6
YW	114.1
MCE	11.0
MILK	24.5
MWW	58.4

CE	BW	WW	YW	ADG	MCE	MILK	MWW	STAY	DOC	CW	YG	MARB	BF	REA	API	TI
9.4	1.5	61.1	100.9	0.25	11.8	30.4	61.0	10.6	11.6	32.7	-0.08	-0.01	-0.026	0.33	104.1	59.1

- Solid black, smaller framed 3/4 blood.
- High maternal numbers.
- Dam has placed 2 heifers and 1 bull in Vision sales.
- Ultrasound predicts April calf.
- AI'd on 5/26/16 to Constitution, PE to Constitution from 6/14-9/1/16

87 | RFS MISS CRYSTAL C77

RYDEEN FARMS Black | Polled | PB SM | Cow
 BD: 3/22/15 | Tattoo: C77 | ASA#: 3040647 | Adj. BW: 86 | Adj. WW: 774

SIRE **SVF ALLEGIANCE Y802**
 MR NLC UPGRADE U8676
 DOUBLE R MISS 29G T18

DAM **RFS MISS T37**
 HOOKS SHEAR FORCE 38K
 RF RABBIT

PROJECTED EPDS	
CE	15.3
BW	-0.9
WW	74.1
YW	120.3
MCE	9.0
MILK	21.6
MWW	58.7

CE	BW	WW	YW	ADG	MCE	MILK	MWW	STAY	DOC	CW	YG	MARB	BF	REA	API	TI
12.4	0.8	74.1	113.4	0.25	7.8	24.6	61.6	10.9	13.1	38.4	-0.49	0.30	-0.055	1.43	142.1	82.0

- Blaze faced Allegiance PB.
- Great EPD profile, top 15% of breed in API, top 2% TI.
- Dam is a 5.5 frame Shear Force with a Top Grade son in the yearling bull group.
- Ultrasound safe to AI date for early March calf--? twins.
- AI'd on 5/27/16 to Constitution, PE to Constitution from 6/14-7/26

88**RFS MISS CELIA C18****RYDEEN FARMS****Black | Polled | 5/8 SM 1/4 AN 1/8 CS | Cow**

BD: 3/15/15 | Tattoo: C18 | ASA#: 3040588 | Adj. BW: 93 | Adj. WW: 808

MR NLC UPGRADE U8676

SIRE MCM TOP GRADE 018X

MCM 513R

TNT TANKER U263

DAM RFS MISS Z25

W10

PROJECTED EPDS

CE	12.3
BW	-0.4
WW	75.8
YW	125.3
MCE	9.8
MILK	20.6
MWW	58.5

CE	BW	WW	YW	ADG	MCE	MILK	MWW	STAY	DOC	CW	YG	MARB	BF	REA	API	TI
6.3	1.9	77.5	123.4	0.29	9.4	22.6	61.3	9.4	11.6	46.2	-0.35	0.47	-0.063	1.04	131.2	80.4

- Solid black 5/8 Sim/Angus female.
- Ranks in the top 5% of the breed for weaning and yearling wt.
- Maternal brother, a Connealy Right Answer son sold to Wayne Essig in 2015.
- Ultrasound safe to AI date for early March heifer calf.
- AI'd on 5/27/16 to Constitution, PE to Constitution from 6/14-7/26

89**RFS MISS CASEY C41****RYDEEN FARMS****Black | Polled | 5/8 SM 3/8 AN | Cow**

BD: 3/19/15 | Tattoo: C41 | ASA#: 3040610 | Adj. BW: 87 | Adj. WW: 739

MR NLC UPGRADE U8676

SIRE MCM TOP GRADE 018X

MCM 513R

W R BAR IN FOCUS 730

DAM Y79

W3

PROJECTED EPDS

CE	15.1
BW	-1.2
WW	68.8
YW	113.6
MCE	9.8
MILK	20.7
MWW	55.1

CE	BW	WW	YW	ADG	MCE	MILK	MWW	STAY	DOC	CW	YG	MARB	BF	REA	API	TI
11.9	0.2	63.5	100.0	0.23	9.4	22.7	54.4	9.7	12.4	30.0	-0.26	0.79	0.003	1.08	153.3	82.1

- Solid black with a brood cow look.
- High scan ratios, #1 IMF score in 2015 heifers.
- Dam consistently produces low birth wt., high carcass quality progeny.
- Ultrasound predicts March calf.
- AI'd on 6/7/16 to Constitution, PE to Constitution from 6/14-7/26

90**RFS MISS CARMEN C76****RYDEEN FARMS****Black | Polled | 1/2 SM 1/2 AN | Cow**

BD: 3/22/15 | Tattoo: C76 | ASA#: 3040646 | Adj. BW: 85 | Adj. WW: 682

S A V FINAL ANSWER 0035

SIRE HART FINAL ANSWER 0048

HART BLACKCAP MAID 8114

RF DEWPOINT W78

DAM RFS MISS A233

RF PANDORA

PROJECTED EPDS

CE	15.4
BW	-0.9
WW	73.1
YW	116.8
MCE	10.3
MILK	19.9
MWW	56.5

CE	BW	WW	YW	ADG	MCE	MILK	MWW	STAY	DOC	CW	YG	MARB	BF	REA	API	TI
12.5	0.8	72.1	106.3	0.21	10.4	21.1	57.2	11.1	11.2	34.0	-0.19	0.56	-0.042	0.55	146.3	80.2

- Black, moderate framed 1/2 blood Sim/Angus.
- Dam is a hardworking 2nd calf heifer.
- Ultrasound predicts March calf.
- AI'd on 5/27/16 to Constitution, PE to Constitution from 6/14-7/26

91**RFS MISS CINDY C116****RYDEEN FARMS****Black | Polled | 3/4 SM 1/4 AN | Cow**

BD: 4/2/15 | Tattoo: C116 | ASA#: 3040687 | Adj. BW: 89 | Adj. WW: 768

S A V FINAL ANSWER 0035

SIRE TNT TUITION U238

TNT MISS S68

HC HUMMER 12M

DAM U82

TRIPLE C BITTER SWEET N3

PROJECTED EPDS

CE	13.8
BW	-0.4
WW	74.9
YW	125.3
MCE	8.8
MILK	19.9
MWW	57.3

CE	BW	WW	YW	ADG	MCE	MILK	MWW	STAY	DOC	CW	YG	MARB	BF	REA	API	TI
9.3	1.8	75.6	123.4	0.30	7.4	21.1	58.9	8.9	7.5	46.1	-0.11	0.54	-0.010	0.70	136.6	80.6

- Long bodied, black TNT Tuition female.
- Excellent weaning, yearling, individual scan data.
- Dam has exceptional maternal qualities.
- Ultrasound predicts May calf.
- AI'd on 5/26/16 to Constitution, PE to Constitution from 6/14-7/26 and Hart's Checkmark from 7/26-8/9/16

**LOT 88****LOT 89****LOT 90****LOT 91**

92

RFS MISS CORA C55

RYDEEN FARMS

Black | Polled | 3/4 SM 1/4 AN | Cow

BD: 3/20/15 | Tattoo: C55 | ASA#: 3040625 | Adj. BW: 86 | Adj. WW: 616

B/R NEW FRONTIER 095

SIRE GLS COMBINATION R2

GLS HOSTESS H16

HTP SVF IN DEW TIME

DAM W36

RF MISS RAM P288

PROJECTED EPDS	
CE	14.1
BW	-0.4
WW	66.2
YW	108.9
MCE	8.5
MILK	16.5
MWW	49.6

CE	BW	WW	YW	ADG	MCE	MILK	MWW	STAY	DOC	CW	YG	MARB	BF	REA	API	TI
9.9	1.8	58.3	90.5	0.20	6.9	14.4	43.5	10.2	11.4	26.8	-0.12	0.48	-0.003	0.56	127.9	67.4

- Well-made GLS Combination daughter.
- Great marbling scan data.
- Dam's raised 6 good ones, all below average herd birth wt.
- Ultrasound safe to AI date for early March heifer calf.
- AI'd on 5/26/16 to Constitution, PE to Constitution from 6/14-7/26



LOT 92

93

RFS MISS CARRIE C169

RYDEEN FARMS

Black | Polled | 3/4 SM 1/4 AN | Cow

BD: 5/4/15 | Tattoo: C169 | ASA#: 3040739 | Adj. BW: 92 | Adj. WW: 778

HTP SVF IN DEW TIME

SIRE RF DEWPOINT W78

RF MISS N97

ELLINGSON RIGHT ON W944

DAM RFS MISS Z78

PAR JUDGES HEROINE

PROJECTED EPDS	
CE	13.5
BW	-0.1
WW	73.7
YW	112.4
MCE	9.0
MILK	19.1
MWW	56.0

CE	BW	WW	YW	ADG	MCE	MILK	MWW	STAY	DOC	CW	YG	MARB	BF	REA	API	TI
8.7	2.5	73.3	97.5	0.15	7.8	19.6	56.2	11.7	11.3	30.7	-0.18	-0.09	-0.032	0.56	100.0	60.9

- Solid black, deep sided, 3/4 blood Sim/Angus.
- Dam is a 6.5 frame cow that does a great job.
- Ultrasound predicts a March calf.
- AI'd on 5/26/16 to Constitution, PE to Constitution from 6/14-7/26



LOT 93

94

RFS MISS CASSIDY C40

RYDEEN FARMS

Black | Polled | 3/4 SM 1/4 AN | Cow

BD: 3/19/15 | Tattoo: C40 | ASA#: 3040609 | Adj. BW: 89 | Adj. WW: 708

MR NLC UPGRADE U8676

SIRE SVF ALLEGIANCE Y802

DOUBLE R MISS 29G T18

W R BAR IN FOCUS 730

DAM W185

RFS MISS T75

PROJECTED EPDS	
CE	14.1
BW	-0.5
WW	72.1
YW	116.1
MCE	8.5
MILK	19.1
MWW	55.1

CE	BW	WW	YW	ADG	MCE	MILK	MWW	STAY	DOC	CW	YG	MARB	BF	REA	API	TI
10.0	1.7	70.1	105.0	0.22	6.8	19.5	54.5	6.8	13.4	34.8	-0.26	0.01	-0.030	0.87	100.7	64.0

- A superb, black Allegiance 3/4 blood.
- Nice, balanced EPD profile.
- Dam is a low birth wt. WR Bar In Focus gal.
- Ultrasound safe to AI date for early March heifer calf.
- AI'd on 5/26/16 to Constitution, PE to Constitution from 6/14-7/26



LOT 94

95

RFS MISS CAROL C84

RYDEEN FARMS

Black | Polled | PB SM | Cow

BD: 3/23/15 | Tattoo: C84 | ASA#: 3040654 | Adj. BW: 92 | Adj. WW: 690

KS BLACK DIAMOND W992

SIRE KBHR Y068 HARLEY

OLF LADY TRIATHLON S587

GFI RAMBLER J114

DAM RF RACHELLE

RFS MARILEE M22

PROJECTED EPDS	
CE	12.7
BW	0.3
WW	67.5
YW	114.0
MCE	9.0
MILK	19.6
MWW	53.4

CE	BW	WW	YW	ADG	MCE	MILK	MWW	STAY	DOC	CW	YG	MARB	BF	REA	API	TI
7.2	3.1	60.9	100.7	0.25	7.8	20.6	51.1	13.2	10.9	35.0	-0.27	-0.23	-0.073	0.58	101.4	56.1

- A fine, solid black Hartley PB.
- 12 year old dam is a big, powerful Rambler who weaned 10 great calves.
- Ultrasound predicts a March calf.
- AI'd on 5/26/16 to Constitution, PE to Constitution from 6/14-7/26

96

RFS MISS CARLY C126

RYDEEN FARMS

Black | Polled | 3/4 SM 1/4 AN | Cow

BD: 4/9/15 | Tattoo: C126 | ASA#: 3040697 | Adj. BW: 79 | Adj. WW: 684

S CHISUM 6175

SIRE KNH SECURITY 258A

KNH MISS 58S

GW LUCKY BREAK 047G

DAM RFS MILLIE JANE

RFS CASS H28

PROJECTED EPDS	
CE	15.0
BW	-1.4
WW	62.4
YW	102.2
MCE	12.4
MILK	21.5
MWW	52.7

CE	BW	WW	YW	ADG	MCE	MILK	MWW	STAY	DOC	CW	YG	MARB	BF	REA	API	TI
11.7	-0.2	50.7	77.2	0.17	14.7	24.3	49.7	10.6	10.9	15.9	-0.11	0.11	0.008	0.49	110.7	57.0

- Black, 3/4 blood Security female.
- Low birth wt. heifer.
- Dam's raised 12 calves with an average birth ratio of 104 (12).
- Ultrasound predicts April calf.
- AI'd on 5/26/16 to Constitution, PE to Constitution from 6/14-9/1/16

97**RFS MISS COLLEEN C44****RYDEEN FARMS****Black | Polled | 3/4 SM 1/4 AN | Cow**

BD: 3/19/15 | Tattoo: C44 | ASA#: 3040614 | Adj. BW: 87 | Adj. WW: 743

SIRE KBHR Y068 HARLEY
 KS BLACK DIAMOND W992
 OLF LADY TRIATHLON S587

DAM RF PEARL
 L6
 NICHOLS LEGACY G151

PROJECTED EPDS	
CE	13.4
BW	-0.5
WW	71.8
YW	115.6
MCE	7.2
MILK	15.4
MWW	51.3

CE	BW	WW	YW	ADG	MCE	MILK	MWW	STAY	DOC	CW	YG	MARB	BF	REA	API	TI
8.6	1.7	69.4	103.9	0.22	4.3	12.2	46.9	11.3	10.1	34.0	-0.16	0.03	-0.022	0.61	108.0	62.5

- Solid black, clean fronted Harley daughter.
- Ratio's over 100 from birth to yearling wt.
- Dam's a Legacy cow progeny ratios 105 (10) birth wt.
- Ultrasound safe to AI date for early March bull calf.
- AI'd on 5/26/16 to Constitution, PE to Constitution from 6/14-7/26

98**RFS MISS CANDICE C38****RYDEEN FARMS****Black | Polled | PB SM | Cow**

BD: 3/19/15 | Tattoo: C38 | ASA#: 3040607 | Adj. BW: 86 | Adj. WW: 769

SIRE SVF ALLEGIANCE Y802
 MR NLC UPGRADE U8676
 DOUBLE R MISS 29G T18

DAM RS MISS INVASION U102
 SF BLK NIRVANA 414
 TRIPLE C INVASION R47K

PROJECTED EPDS	
CE	14.3
BW	-0.8
WW	70.6
YW	112.5
MCE	7.5
MILK	21.5
MWW	56.8

CE	BW	WW	YW	ADG	MCE	MILK	MWW	STAY	DOC	CW	YG	MARB	BF	REA	API	TI
10.4	1.0	67.1	97.8	0.19	4.9	24.3	57.8	8.7	12.5	29.4	-0.35	0.17	-0.029	1.11	122.9	72.9

- Very moderate Allegiance gal.
- Low birth wt., high weaning wt.
- Dam purchased from Thesings; progeny ratios 103 (7) birth wt., 103(7) weaning wt.
- Ultrasound predicts April calf.
- AI'd on 5/26/16 to Constitution, PE to Constitution from 6/14-9/1/16

100**RFS MISS COLETTE C128****RYDEEN FARMS****Black | Polled | 3/4 SM 1/4 AN | Cow**

BD: 4/9/15 | Tattoo: C128 | ASA#: 3040699 | Adj. BW: 84 | Adj. WW: 665

SIRE KNH SECURITY 258A
 S CHISUM 6175
 KNH MISS 58S

DAM W91
 HTP SVF IN DEW TIME
 RF SCRUPLE S123

PROJECTED EPDS	
CE	14.9
BW	-1.1
WW	64.6
YW	107.5
MCE	10.8
MILK	21.2
MWW	53.5

CE	BW	WW	YW	ADG	MCE	MILK	MWW	STAY	DOC	CW	YG	MARB	BF	REA	API	TI
11.6	0.5	55.0	87.7	0.20	11.4	23.7	51.2	10.0	11.9	23.3	-0.13	0.38	-0.016	0.44	125.8	65.9

- Solid black, 3/4 blood, Security female.
- Low birth wt. with excellent IMF scan data.
- Dam has six progeny to date and all below average birth wt.
- Ultrasound safe to AI date for early March heifer calf.
- AI'd on 5/26/16 to Constitution, PE to Constitution from 6/14-7/26

101**RFS MISS CLARISSA C142****RYDEEN FARMS****Black | Polled | PB SM | Cow**

BD: 4/16/15 | Tattoo: C142 | ASA#: 3040712 | Adj. BW: 86 | Adj. WW: 807

SIRE RF DEWPOINT W78
 HTP SVF IN DEW TIME
 RF MISS N97

DAM X91
 MR NLC SUPERIOR S6018
 RFS ELGIN H68

PROJECTED EPDS	
CE	13.3
BW	-0.3
WW	76.3
YW	117.3
MCE	10.7
MILK	19.6
MWW	57.8

CE	BW	WW	YW	ADG	MCE	MILK	MWW	STAY	DOC	CW	YG	MARB	BF	REA	API	TI
8.3	2.1	78.4	107.4	0.18	11.2	20.6	59.8	14.3	10.4	36.1	-0.37	-0.07	-0.066	0.96	119.1	71.1

- Solid black, Dewpoint daughter.
- Top 4% of breed weaning wt.
- Dam has had 5 calves and sent one of them to Dan Lyberg in 2015.
- Ultrasound safe to AI date for early March calf.
- AI'd on 5/26/16 to Constitution, PE to Constitution from 6/14-7/26



LOT 97



LOT 98

99**RFS MISS CIARA C132****RYDEEN FARMS****Black | Polled | 3/4 SM 1/4 AN | Cow**

BD: 4/10/15 | Tattoo: C132 | ASA#: 3040703 | Adj. BW: 84 | Adj. WW: 616

SIRE KNH SECURITY 258A
 S CHISUM 6175
 KNH MISS 58S

DAM RF SESAME S164
 GFI RAMBLER J114
 RF MISS N17

PROJECTED EPDS	
CE	14.6
BW	-1.0
WW	64.0
YW	107.2
MCE	10.3
MILK	21.7
MWW	53.7

CE	BW	WW	YW	ADG	MCE	MILK	MWW	STAY	DOC	CW	YG	MARB	BF	REA	API	TI
10.9	0.6	53.8	87.2	0.21	10.5	24.8	51.7	10.6	11.5	23.2	-0.19	0.12	-0.042	0.43	111.7	58.9

- Solid black, moderate framed 3/4 blood.
- Low birth wt.
- Dam has 10 calf crops at Rydeen Farms.
- Ultrasound safe to AI date for early March heifer calf.
- AI'd on 5/26/16 to Constitution, PE to Constitution from 6/14-7/26

North
Dakota
Simmental
Association

**Classic
SALE**

Thank You To The Buyers Of Our ND
 Simmental Classic Consignments...
 Meyer 7M Simmental, Elgin, ND and
 Doll Simmental Ranch, New Salem, ND.

102 | RFS MISS CARLA C59

RYDEEN FARMS

Red | Polled | PB SM | Cow

BD: 3/20/15 | Tattoo: C59 | ASA#: 3040629 | Adj. BW: 90 | Adj. WW: 727

SIRE R PLUS HARD ROCK 145X
ELLINGSON COMPLETE A358
ELLINGSON MS AMIGO X5

DAM Y109
GCF MR AMIGO
RF MISS J113

PROJECTED EPDS

CE	13.9
BW	-0.9
WW	63.7
YW	83.6
MCE	11.0
MILK	19.4
MWW	51.2

CE	BW	WW	YW	ADG	MCE	MILK	MWW	STAY	DOC	CW	YG	MARB	BF	REA	API	TI
10.9	2.4	68.8	88.6	0.12	12.0	10.9	45.3	10.1	11.3	25.4	-0.38	-0.05	-0.043	1.02	110.2	64.7

- Splendid, big, deep red, Complete heifer.
- No Beefmaker, Beef King so can be bred any way you like.
- Impressive cow family in her pedigree.
- Ultrasound safe to AI date for early March heifer calf.
- AI'd 5/26/16 to Hook's Xpectation, PE to Hart's 003B from 6/14-7/26/16.



LOT 102

103 | RFS MISS CHARLENE C66

RYDEEN FARMS

Red | Polled | PB SM | Cow

BD: 3/21/15 | Tattoo: C66 | ASA#: 3040636 | Adj. BW: 90 | Adj. WW: 772

SIRE R PLUS HARD ROCK 145X
ELLINGSON COMPLETE A358
ELLINGSON MS AMIGO X5

DAM W200
BBS PHALTLINE P5
RS REBA R72

PROJECTED EPDS

CE	13.6
BW	-0.7
WW	65.1
YW	88.0
MCE	9.7
MILK	22.1
MWW	54.6

CE	BW	WW	YW	ADG	MCE	MILK	MWW	STAY	DOC	CW	YG	MARB	BF	REA	API	TI
10.4	2.8	71.6	97.3	0.16	9.4	16.2	52.0	10.9	10.1	31.3	-0.35	-0.10	-0.051	0.96	109.7	65.4

- Charlene is a dark red, Complete purebred female.
- Gorgeous phenotype and great cow family.
- Ultrasound predicts March calf.
- AI'd 5/26/16 to Hook's Xpectation, PE to Hart's 003B from 6/14-7/26/16.



LOT 103

104 | RFS MISS CONNIE C153

RYDEEN FARMS

Red | Polled | PB SM | Cow

BD: 4/25/15 | Tattoo: C153 | ASA#: 3040723 | Adj. BW: 93 | Adj. WW: 751

SIRE R PLUS HARD ROCK 145X
ELLINGSON COMPLETE A358
ELLINGSON MS AMIGO X5

DAM Z34
TRAXS RUSHMORE X103
RF RAINBOW

PROJECTED EPDS

CE	13.7
BW	-0.9
WW	64.4
YW	88.2
MCE	10.6
MILK	19.3
MWW	51.5

CE	BW	WW	YW	ADG	MCE	MILK	MWW	STAY	DOC	CW	YG	MARB	BF	REA	API	TI
10.6	2.3	70.2	97.7	0.17	11.2	10.7	45.8	11.4	12.6	31.0	-0.34	0.31	-0.061	0.83	134.2	75.0

- Solid red, moderate framed PB Complete heifer.
- Ranks in top 20% of breed weaning wt.
- Excellent individual IMF scan data.
- Dam is a 5.5 frame, ¾ blood with a perfect udder.
- Ultrasound predicts March calf.
- AI'd 5/26/16 to Hook's Xpectation, PE to Hart's 003B from 6/14-7/26/16.



LOT 104

105 | RFS MISS CORINNE C179

RYDEEN FARMS

Red | Polled | PB SM | Cow

BD: 5/16/15 | Tattoo: C179 | ASA#: 3040749 | Adj. BW: 90 | Adj. WW: 821

SIRE R PLUS HARD ROCK 145X
ELLINGSON COMPLETE A358
ELLINGSON MS AMIGO X5

DAM X9
TNT GUNNER N208
RF SISSY S12

PROJECTED EPDS

CE	13.4
BW	-0.8
WW	64.1
YW	83.7
MCE	11.7
MILK	22.4
MWW	54.4

CE	BW	WW	YW	ADG	MCE	MILK	MWW	STAY	DOC	CW	YG	MARB	BF	REA	API	TI
9.9	2.6	69.6	88.7	0.12	13.3	16.9	51.7	10.3	11.6	25.6	-0.37	0.04	-0.047	0.98	113.7	67.5

- Real brood cow look in this female.
- Her 205 day wt. was 821 lb.--she will wean the big ones.
- Full brother stands in the bull pen and is one of the best, Darby D119, Lot 36.
- Ultrasound predicts April calf.
- AI'd 5/26/16 to Hook's Xpectation, PE to Hart's 003B from 6/14-9/1/16.



LOT 105



LOT 106



LOT 107



LOT 108



LOT 109

106 | RFS MISS CELINE C183

RYDEEN FARMS

Red | Homo Polled | PB SM | Cow

BD: 5/23/15 | Tattoo: C183 | ASA#: 3049437 | Adj. BW: 91 | Adj. WW: 853

R PLUS HARD ROCK 145X
SIRE ELLINGSON COMPLETE A358
 ELLINGSON MS AMIGO X5
 TNT AXIS X307
DAM LRS MS AXIS 281Z
 LRS MS HUMMER 708T

PROJECTED EPDS	
CE	12.8
BW	-0.5
WW	68.4
YW	93.2
MCE	10.3
MILK	22.6
MWW	56.8

CE	BW	WW	YW	ADG	MCE	MILK	MWW	STAY	DOC	CW	YG	MARB	BF	REA	API	TI
8.7	3.2	78.3	107.8	0.18	10.6	17.3	56.4	11.4	11.6	38.0	-0.26	0.18	-0.037	0.88	125.3	75.3

- Long and deep bodied, homo polled.
- Ranks in top 4% of breed for weaning wt.
- Dam is a wonderful TNT Axis cow purchased from Lassle Ranch, MT.
- Ultrasound safe to AI date for early March heifer calf.
- AI'd 5/27/16 to Hook's Xpectation, PE to Hart's 003B from 6/14-7/26/16.

107 | RFS MISS CHANDRA C194

RYDEEN FARMS

Red | Polled | PB SM | Cow

BD: 6/2/15 | Tattoo: C194 | ASA#: 3040763 | Adj. BW: 90 | Adj. WW: 823

R PLUS HARD ROCK 145X
SIRE ELLINGSON COMPLETE A358
 ELLINGSON MS AMIGO X5
 STR KING ARTHUR N310
DAM RS REBA R72
 ESG14

PROJECTED EPDS	
CE	13.7
BW	-0.7
WW	64.2
YW	88.8
MCE	9.4
MILK	24.6
MWW	56.7

CE	BW	WW	YW	ADG	MCE	MILK	MWW	STAY	DOC	CW	YG	MARB	BF	REA	API	TI
10.5	2.8	69.8	99.0	0.18	8.7	21.3	56.2	9.1	11.1	32.5	-0.45	-0.18	-0.081	1.04	102.2	63.5

- A 5.5 frame solid red, Complete daughter.
- Very good individual weaning and yearling wts.
- Dam was purchased from Thesings, progeny ratios 106 (8) weaning wt.
- Ultrasound predicts March calf.
- AI'd 5/26/16 to Hook's Xpectation, PE to Hart's 003B from 6/14-7/26/16.

108 | RFS MISS CORDELIA C167

RYDEEN FARMS

Red | Polled | PB SM | Cow

BD: 5/3/15 | Tattoo: C167 | ASA#: 3040737 | Adj. BW: 70 | Adj. WW: 675

R PLUS HARD ROCK 145X
SIRE ELLINGSON COMPLETE A358
 ELLINGSON MS AMIGO X5
 WS RED THUNDER W108
DAM WS MISS REDNECK Z159
 WS MISS KGB U179

PROJECTED EPDS	
CE	13.3
BW	-0.7
WW	63.8
YW	87.4
MCE	9.7
MILK	23.3
MWW	55.1

CE	BW	WW	YW	ADG	MCE	MILK	MWW	STAY	DOC	CW	YG	MARB	BF	REA	API	TI
9.8	2.7	69.1	96.2	0.17	9.4	18.6	53.1	10.6	12.3	30.7	-0.33	0.10	-0.046	0.91	118.6	69.1

- Outstanding long, deep gal.
- Balanced EPD's ranked to 25% of breed for weaning wt.
- Dam purchased from Wilkinson Farms.
- Ultrasound predicts March calf.
- AI'd 5/26/16 to Hook's Xpectation, PE to Hart's 003B from 6/14-7/26/16.

109 | RFS MISS CHERIE C52

RYDEEN FARMS

Red | Polled | PB SM | Cow

BD: 3/20/15 | Tattoo: C52 | ASA#: 3040622 | Adj. BW: 84 | Adj. WW: 786

R PLUS HARD ROCK 145X
SIRE ELLINGSON COMPLETE A358
 ELLINGSON MS AMIGO X5
 TRAXS RUSHMORE X103
DAM RFS MISS Z52
 HOOK'S WRANGLER 93W

PROJECTED EPDS	
CE	15.1
BW	-0.7
WW	71.9
YW	110.3
MCE	11.9
MILK	17.9
MWW	53.9

CE	BW	WW	YW	ADG	MCE	MILK	MWW	STAY	DOC	CW	YG	MARB	BF	REA	API	TI
12.0	1.2	69.7	93.4	0.15	13.6	17.2	52.0	11.9	13.2	26.6	-0.41	0.07	-0.069	0.93	125.1	70.9

- Broody, bold looking female.
- Low birth wt., feminine.
- Dam and grand dam are very maternal and special.
- Ultrasound predicts a May calf.
- AI'd to Constitution of 5/27/16, PE to Hart's 003B from 6/14-7/26, Hart's Checkmark 7/26-8/9/16.

110**RFS MISS CATHY C137****RYDEEN FARMS**

Red | Polled | PB SM | Cow

BD: 4/13/15 | Tattoo: C137 | ASA#: 3040708 | Adj. BW: 90 | Adj. WW: 784

SIRE R PLUS HARD ROCK 145X
ELLINGSON COMPLETE A358
 ELLINGSON MS AMIGO X5

DAM LBR CROCKETT R81
RFS MISS T83
 RBS RF MINA

PROJECTED EPDS

CE	11.8
BW	-0.4
WW	64.5
YW	90.5
MCE	9.4
MILK	22.7
MWW	54.9

CE	BW	WW	YW	ADG	MCE	MILK	MWW	STAY	DOC	CW	YG	MARB	BF	REA	API	TI
6.7	3.4	70.4	102.3	0.20	8.8	17.5	52.7	8.7	11.1	35.5	-0.25	-0.04	-0.013	0.98	102.7	64.8

- Dark, cherry red with a bit of white on her udder.
- One of the top yearling wt. females.
- Maternal brother is a blaze faced Bulletproof son in the yearling pen, Duncan D133, Lot 39.
- Ultrasound predicts a May calf.
- AI'd 5/26/16 to Hook's Xpectation, PE to Hart's 003B from 6/14-7/26, Hart's Checkmark 7/26-8/9/16.

**LOT 110****111****RFS MISS CHRISTY C193****RYDEEN FARMS**

Red | Polled | PB SM | Cow

BD: 5/28/15 | Tattoo: C193 | ASA#: 3040762 | Adj. BW: 85 | Adj. WW: 790

SIRE R PLUS HARD ROCK 145X
ELLINGSON COMPLETE A358
 ELLINGSON MS AMIGO X5

DAM TNT TOP GUN R244
X94
 RBS RFS S118

PROJECTED EPDS

CE	13.6
BW	-0.9
WW	66.1
YW	92.1
MCE	9.5
MILK	21.8
MWW	54.8

CE	BW	WW	YW	ADG	MCE	MILK	MWW	STAY	DOC	CW	YG	MARB	BF	REA	API	TI
10.3	2.3	73.7	105.6	0.20	8.9	15.7	52.5	9.0	10.4	35.6	-0.26	-0.17	-0.053	0.73	104.1	65.4

- Solid red, low birth wt.
- Top 15% of breed for weaning wt., top 20% for yearling wt.
- Dam had 5 natural calves at Rydeen Farms.
- Ultrasound predicts April calf.
- AI'd 5/27/16 to Hook's Xpectation, PE to Hart's 003B from 6/14-9/1/16.

**LOT 111****112****RFS MISS CHERRY C72****RYDEEN FARMS**

Red | Polled | PB SM | Cow

BD: 3/22/15 | Tattoo: C72 | ASA#: 3040642 | Adj. BW: 90 | Adj. WW: 756

SIRE R PLUS HARD ROCK 145X
ELLINGSON COMPLETE A358
 ELLINGSON MS AMIGO X5

DAM RF BLK RUBY K58
RF REPRESENT
 SHOESTRING BIKS J109

PROJECTED EPDS

CE	13.1
BW	-0.5
WW	68.2
YW	92.7
MCE	11.1
MILK	21.3
MWW	55.4

CE	BW	WW	YW	ADG	MCE	MILK	MWW	STAY	DOC	CW	YG	MARB	BF	REA	API	TI
9.3	3.1	77.8	106.7	0.18	12.2	14.7	53.6	11.2	10.4	37.1	-0.40	0.08	-0.084	0.93	120.6	73.1

- Complete daughter with a 6 frame and a bit lighter color.
- Top 5% of breed for weaning wt., great IMF scan score.
- Dam is ranked in the top 4% of the breed for MCE.
- Ultrasound predicts April calf.
- AI'd 5/26/16 to Hook's Xpectation, PE to Hart's 003B from 6/14-9/1/16.

113**RFS MISS CECILY C178****RYDEEN FARMS**

Red | Polled | PB SM | Cow

BD: 5/14/15 | Tattoo: C178 | ASA#: 3040748 | Adj. BW: 90 | Adj. WW: 766

SIRE R PLUS HARD ROCK 145X
ELLINGSON COMPLETE A358
 ELLINGSON MS AMIGO X5

DAM KS SUNDANCE KID S28
RFS MISS Z15
 X73

PROJECTED EPDS

CE	13.3
BW	-0.8
WW	64.8
YW	87.4
MCE	10.6
MILK	21.5
MWW	53.9

CE	BW	WW	YW	ADG	MCE	MILK	MWW	STAY	DOC	CW	YG	MARB	BF	REA	API	TI
9.8	2.5	71.1	96.1	0.16	11.1	15.1	50.7	9.2	11.7	30.1	-0.30	0.37	-0.070	0.64	130.8	76.5

- Complete daughter with a 5.5 frame, solid red.
- Top 10% of the breed for marbling
- Ranked 1/29 IMF individual scan score.
- Dam is ranked in the top 15% of breed for MCE.
- Ultrasound predicts April calf.
- AI'd 5/26/16 to Hook's Xpectation, PE to Hart's 003B from 6/14-9/1/16.



- Member of Allied Genetic Resources -
 For more information visit their website,
www.alliedgeneticresources.com



LOT 114

114 | RFS MISS DAPHNE D22

RYDEEN FARMS

Black | Polled | 3/4 SM 1/4 AN | Open Heifer

BD: 3/2/16 | Tattoo: D22 | ASA#: 3178493 | Adj. BW: 86 | Adj. WW: 623

REMINGTON LOCK N LOAD54U

SIRE ELLINGSON LOAD UP B4022

BRANT R17K MS TOP SHELF

LEMAR DAKOTA GOLD 18T

DAM Y57

W36

CE	BW	WW	YW	ADG	MCE	MILK	MWW	STAY	DOC	CW	YG	MARB	BF	REA	API	TI
14.0	0.0	54.6	91.1	0.23	7.4	15.2	42.5	10.3	12.3	24.7	-0.27	0.15	-0.016	0.89	119.6	61.2

- Miss Daphne is solid black with an exceptional phenotype.
- First female offered from our new herd sire.
- Dam is ranked top 5% of breed for calving ease.



LOT 115

115 | RFS MISS DAISY D28

RYDEEN FARMS

Black | Polled | 3/8 SM 5/8 AN | Open Heifer

BD: 3/3/16 | Tattoo: D28 | ASA#: 3178499 | Adj. BW: 89 | Adj. WW: 665

CONNELY WRANGLER

SIRE CONNEALY IRISH 0204

BLACK CREST OF CONANGA 5640

TNT PUNCH Y260

DAM B130

U80

CE	BW	WW	YW	ADG	MCE	MILK	MWW	STAY	DOC	CW	YG	MARB	BF	REA	API	TI
11.4	-0.1	60.3	92.9	0.20	13.8	20.5	50.6	8.2	13.3	25.2	-0.28	0.46	-0.036	0.78	132.2	69.2

- Miss Daisy is a wonderful solid black, Connealy Irish open.
- She exhibits our Sim/Angus goals perfectly.
- Dam is a first calf heifer.



LOT 116

116 | RFS MISS DARCY D36

RYDEEN FARMS

Black | Polled | 3/4 SM 1/4 AN | Open Heifer

BD: 3/7/16 | Tattoo: D36 | ASA#: 3178507 | Adj. BW: 94 | Adj. WW: 660

GW PREMIUM BEEF 021TS

SIRE GW ROBUST 605Z

GW MISS GPRD 123X

MR NLC SUPERIOR S6018

DAM X51

RFS ISABELLA H86

CE	BW	WW	YW	ADG	MCE	MILK	MWW	STAY	DOC	CW	YG	MARB	BF	REA	API	TI
9.6	2.5	73.4	112.6	0.24	10.1	21.8	58.5	12.8	14.7	40.5	-0.38	0.26	-0.058	1.12	135.7	77.2

- Miss Darcy is as long as a stock trailer with a deep body to fit.
- Top 10% of the breed weaning wt., top 4% docility.
- Maternal sister sells in the bred line up, Cynthia C23, Lot 78.



LOT 117

117 | RFS MISS DALLAS D59

RYDEEN FARMS

Red | Polled | PB SM | Open Heifer

BD: 3/11/16 | Tattoo: D59 | ASA#: 3178530 | Adj. BW: 90 | Adj. WW: 704

GW REDESTINED 642X

SIRE RFS BULLETPROOF B42

RFS MISS Z119

35R

DAM Y142

RF SONG S43

CE	BW	WW	YW	ADG	MCE	MILK	MWW	STAY	DOC	CW	YG	MARB	BF	REA	API	TI
10.1	1.4	76.8	117.3	0.25	12.9	19.5	57.9	14.3	13.2	41.6	-0.39	0.26	-0.068	1.06	142.8	80.4

- Miss Dallas is royal, solid red Bulletproof daughter.
- Impressive EPD profile and phenotype.
- Dam's daughters do a great job in the herd.

OPEN HEIFERS

118

RFS MISS DARLA D117

RYDEEN FARMS

Red | Polled | PB SM | Open Heifer

BD: 3/19/16 | Tattoo: **D117** | ASA#: 3178589 | Adj. BW: 89 | Adj. WW: 687

DCR MR MOON SHINE X102

SIRE TNT 90 PROOF Z401

TNT MISS S17

GCF MR AMIGO

DAM Y109

RF MISS J113

CE	BW	WW	YW	ADG	MCE	MILK	MHW	STAY	DOC	CW	YG	MARB	BF	REA	API	TI
10.0	2.2	75.3	106.2	0.19	13.2	14.2	51.9	12.4	11.6	35.7	-0.39	0.10	-0.061	1.04	126.3	73.3

- Miss Darla is a great TNT 90 Proof, dark red, open.
- Ranked in top 10% of breed for weaning wt., MCE.
- She will calve easy and wean the best.
- Maternal sister is a beauty in the bred pen as Carla C59, Lot 102.



LOT 118

119

RFS MISS DAWN D148

RYDEEN FARMS

Red | Homo Polled | PB SM | Open Heifer

BD: 3/25/16 | Tattoo: **D148** | ASA#: 3178620 | Adj. BW: 91 | Adj. WW: 689

R PLUS HARD ROCK 145X

SIRE ELLINGSON COMPLETE A358

ELLINGSON MS AMIGO X5

TNT AXIS X307

DAM LRS MS AXIS 281Z

LRS MS HUMMER 708T

CE	BW	WW	YW	ADG	MCE	MILK	MHW	STAY	DOC	CW	YG	MARB	BF	REA	API	TI
9.0	2.9	76.2	107.4	0.20	10.6	18.2	56.3	11.4	11.6	37.5	-0.27	0.18	-0.037	0.88	125.9	74.7

- Miss Dawn is solid red and as good as her photo.
- Balanced EPD's, ranks in the top 10% of breed for weaning wt.
- Dam was purchased from Lassle Ranch.
- Full sib in the bred pen, Celine C183, Lot 106.
- Homo polled



LOT 119

Watch & bid online for FREE at

DVAuction

Broadcasting Real-Time Auctions



Can't make the sale? Bid from home with DV Auction's "real-time" internet bidding service!

Buying online is as easy as 1, 2, 3...

1. Create an account at www.dvauction.com under the "register" tab
2. Apply for bidding approval by clicking on the "details" tab at least 24 hours prior to the auction-a DV representative will notify you once you have been approved
3. Tune in for the sale and make your purchases!

After the sale, contact the sale manager or owner to arrange transportation and payment. **High speed internet** is required for successful bidding-be sure to check the lag-time monitor in the top left corner to ensure real-time broadcasts.

Proxy Bidding-if you can't make time to watch the sale, register a proxy bid and let our system represent your bid while you're away. Look for the "proxy bid" tab on the auction listing, and fill in your maximum bids. We'll handle the rest!

Having troubles? During the auction, you can type a message to the operator at any time for assistance. Our full-time support team can also always be reached at (402) 474-5557.

DVAuction
Broadcasting Real-Time Auctions

Full Service Livestock Marketing

Video - Photography - The Stock Exchange - Ring Service - Banner Ads - Onsite Viewing Service

Catalog designed by



Generation 6
marketing

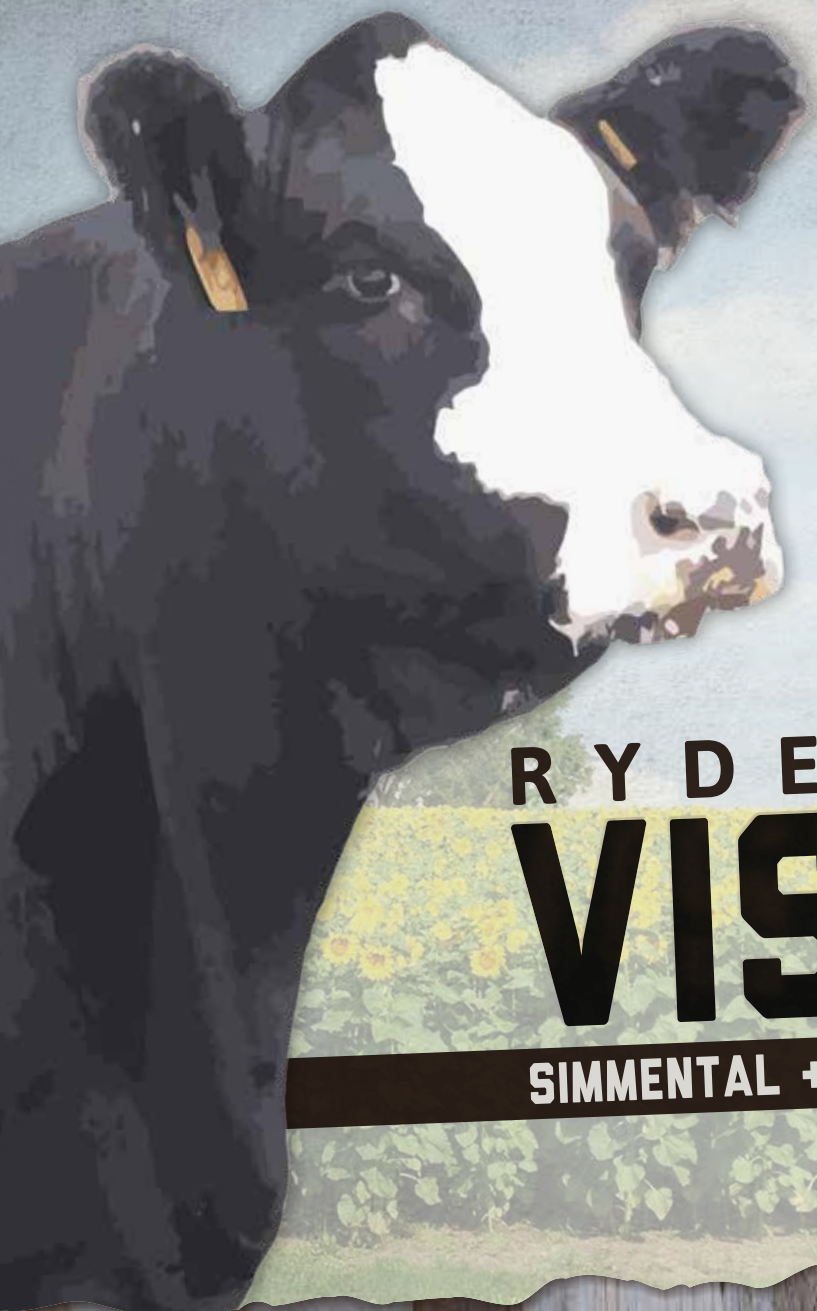
Emily Brinkman, owner/designer
419.967.0141 | www.generation6.co

OPEN HEIFERS

RYDEEN FARMS

47499 199TH AVENUE
CLEARBROOK, MN 56634

First Class | Postal Carrier: Please Do Not Delay Dated Material



RYDEEN FARMS
VISION XIX

SIMMENTAL + SIMANGUS SALE

Sunday, February 12, 2017 | 1 PM
At the Farm | Clearbrook, MN
www.rydeenfarms.com