

RYDEEN FARMS 21ST ANNUAL PRODUCTION SALE

*Genetics with*

# VISION

**NEW DATE + TIME!**  
**SATURDAY, FEBRUARY 9, 2019**  
**AT THE FARM IN CLEARBROOK, MN**

**SIMMENTAL + SIMANGUS**  
**55+ BLACK & RED YEARLING BULLS**  
**25+ AGED BULLS [18-24 MONTHS]**  
**30 BRED & 10 OPEN FEMALES**



**F83 - 3/4 - ASA# 3462261**

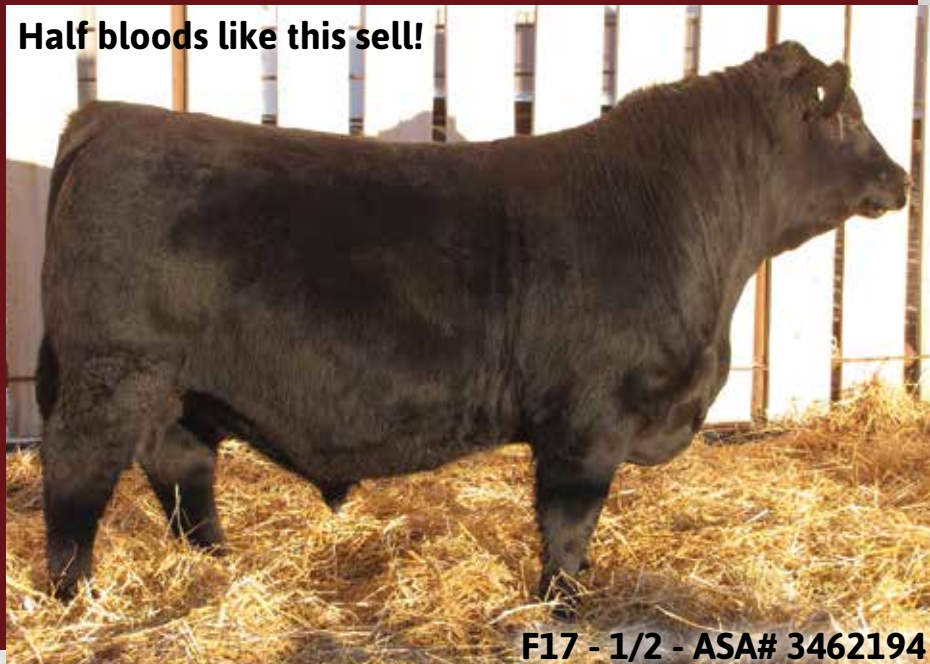
WS All-Around X Hart Final Answer  
 Black, Homo Polled | Yearling  
 13.2 0.4 82 120 8 21 61 [150 API, 83 TI]



**F25 - 3/4 - ASA# 3462002**

CLRS Constitution X Hale Black Diamond  
 Black, Homo Polled | Yearling  
 12.6 1.0 68 107 7 26 60 [147 API, 79 TI]

**Half bloods like this sell!**



**F17 - 1/2 - ASA# 3462194**

Connealy Confidence Plus X KBHR Harley  
 Black, Polled | Yearling  
 13.3 0.7 81 135 7 25 66 [143 API, 83 TI]



**F98 - PB - ASA# 3462276**

WS All Aboard X TNT Gunner  
 Red, Homo Polled | Yearling  
 11.2 1.3 83 120 7 22 64 [146 API, 83 TI]



**F122 - PB - ASA# 3462300**

Ellingson Load Up X KBHR Harley  
 Homo Black, Homo Polled | Yearling  
 10.2 2.1 70 110 1 23 58 [113 API, 64 TI]



**F6 - PB - ASA# 3462181**

CLRS Dividend X SVS Captain Morgan  
 Homo Black, Homo Polled | Yearling  
 10.5 0.5 68 103 6 24 58 [134 API, 73 TI]

Visit our website for updates, including videos and online catalog at  
**[www.rydeenfarms.com](http://www.rydeenfarms.com)**

**RYDEEN FARMS**  
 Est. 1897

**Polled Red & Black Simmental Cattle**

47499 199th Ave, Clearbrook, MN 56634

Farm: 218-776-3338 | Paul: 218-280-1916 | rydeen@gvtel.com

ASA Performance



Advocate



12/20/18 EPDs: CE BW WW YW MCE Milk MWW API TI